

1 **Synthesis of nature's extravaganza: an augmented meta-meta-analysis on (putative)**
2 **sexual signals**

3 **Pietro Pollo^{1*}, Malgorzata Lagisz¹, Renato Chaves Macedo-Rego², Ayumi Mizuno^{1,3},**
4 **Yefeng Yang¹, Shinichi Nakagawa^{1,3}**

5 ¹ Evolution & Ecology Research Centre, School of Biological, Earth & Environmental
6 Sciences, University of New South Wales, Kensington, NSW, 2052, Australia

7 ² Departamento de Biologia Geral, Universidade Federal de Viçosa, Av. Peter Henry Rolfs,
8 Viçosa, Minas Gerais, 36570-000, Brazil

9 ³ Department of Biological Sciences, University of Alberta, CW 405, Biological Sciences
10 Building, Edmonton, AB T6G 2E9, Canada

11 * Corresponding author: pietro_pollo@hotmail.com

12 **Abstract**

13 Conspicuous characteristics that do not seem to contribute to the survival of their bearers,
14 such as colourful body parts and bizarre behaviours, have puzzled biologists for centuries.
15 Sexual selection theory posits that these characteristics evolved because more conspicuous
16 individuals attract more mates and experience greater fitness, yet evidence for this remains
17 fragmented. Our augmented meta-meta-analysis of 41 meta-analyses, encompassing 375
18 animal species and 7,428 individual effect sizes, shows that the conspicuousness of (putative)
19 sexual signals is positively related to attractiveness and benefits to mates, as well as to the
20 fitness, condition, and other traits (e.g. body size) of signal bearers. Importantly, most of
21 these patterns are consistent across both taxa and sexes once within-study variation is
22 considered, underscoring the generalisability of our results. However, we found evidence of
23 publication bias for some of these relationships, meaning some of our results need to be taken
24 with caution. Furthermore, the strength of sexual selection on conspicuousness is positively
25 associated with the relationship between (i) conspicuousness and fitness benefits and (ii)
26 conspicuousness and individual condition. Our study unifies several decades of knowledge on
27 conspicuous traits, provides new insights about them, and lays a clear path for the future of
28 this topic.

29 Main text

30 Extravagant body parts and elaborate behaviours that apparently are not used to deter
31 predators (e.g. aposematic traits) or to fight (e.g. weapons) have intrigued biologists for more
32 than a century precisely because natural selection can rarely explain their evolution¹. These
33 odd traits should be particularly conspicuous to conspecifics (hereby *conspicuous traits*),
34 even though some of them might be unnoticeable to us (e.g. pheromones, electromagnetic
35 fields). The usual explanation for the existence of these conspicuous traits is that more
36 noticeable individuals can attract more or better mates, generating sexual selection for greater
37 trait conspicuousness via mate choice¹⁻³. Consequently, conspicuous traits are often deemed
38 “sexual ornaments” or “sexual signals”, especially if they are sexually dimorphic⁴.
39 Unsurprisingly, mate choice and sexual signals became popular topics within the sexual
40 selection literature since the 1970s, culminating in the development of many theoretical
41 models attempting to explain their evolution (reviewed in ref. ⁵). Despite varying their
42 expectations, these models usually predict that sexual signal conspicuousness increases the
43 fitness of their bearers (e.g. by making them more attractive) and of their mates by signalling
44 direct (in the same generation, with resources or good parenting) or indirect benefits (in
45 subsequent generations, enhancing offspring fitness with greater viability - “good genes” - or
46 attractiveness - “sexy genes”)^{2,5,6}. The theory also predicts that sexual signal conspicuousness
47 is condition-dependent⁶ and that sexual signal conspicuousness covaries with the expression
48 of other traits that can also represent benefits to prospective mates (e.g. body size, social
49 dominance, traits related to sperm competition).

50 The veracity of the propositions above has been tested in the last several decades by
51 numerous empirical studies and, more recently, by various meta-analyses (reviewed in ref. ⁴).
52 However, our knowledge of conspicuous traits assumed to be sexual signals remains
53 fragmented and far from satisfactory because studies (including meta-analytical ones) focus

on one or few variables (e.g. parasite load⁷; survival⁸), types of conspicuous traits (e.g. colourful plumage^{9,10}; song traits^{11,12}), taxa (e.g. birds⁸⁻¹⁸), and sex (e.g. males¹⁹⁻²¹). The last one is particularly emblematic because most of the theory regarding sexual signals has been developed considering only males as their bearers, even though females possess conspicuous traits in many species²² and males can express mate choice²³. Moreover, researchers often assume that conspicuous traits they investigate are attractive to prospective mates without evidence, potentially mixing sexual signals with other non-sexually selected traits and thus possibly drawing misleading conclusions on the evolution of conspicuous traits.

To resolve these outstanding issues, provide a unified knowledge of (putative) sexual signals, and test the generality of patterns related to these signals, we compiled and analysed 7,428 effect sizes from 1,196 empirical studies (used as data sources by 41 meta-analyses^{7-21,24-49}; i.e. second-order meta-analysis augmented with additional data) that investigate the relationship between the conspicuousness of these traits and their bearers' attractiveness, fitness, individual condition, and other traits (Table S1; Fig. 1), representing 375 animal species in total (Fig. 2). We note that determining the conspicuousness of a trait is particularly challenging due to the numerous ways it can be evaluated, such as by their colouration (which depends on many variables, e.g. brightness, chroma, hue), size, symmetry, duration, or other specific properties (e.g. sound frequency). Nonetheless, we used a tailored approach for each trait and species in our dataset using information provided by our data sources (i.e. empirical studies and meta-analyses; see Table S2). We also verified the role of two moderators in the relationships assessed in our study. First, considering that sexual selection is typically proposed to act more strongly on males than on females^{1,50,51}, we assessed the effect of the sex of signal bearers (male vs. female) on our results. Second, in comparison with colour and morphology (hereby *fixed traits*), behavioural signals (hereby *flexible traits*, available only for males in our dataset) can profusely vary in short periods and thus are more

likely to reflect their bearers' current condition²⁴, so we also tested the role of trait type (flexible vs. fixed) when conducting our analyses. Furthermore, we verified an implicit assumption commonly made by biologists that, to our knowledge, has never been systematically tested across studies or species: that the strength of pre-copulatory sexual selection (from mate choice) on the conspicuousness of a trait is linked to the strength of the relationship between the conspicuousness of that trait and the benefits it signals^{52,53}, and by extension to the relationship between the conspicuousness of that trait and the fitness, condition, and other traits of its bearer.

Results and discussion

Is the conspicuousness of putative sexual signals associated with attractiveness to prospective mates?

Empiricists commonly take different measurements from one or more conspicuous traits of individuals of a given species (e.g. refs. ⁵⁴⁻⁵⁶). They then verify the relationship between these measurements and success in mate choice trials or number of mating (i.e. mating success) in the field, which should roughly represent the strength of pre-copulatory sexual selection on conspicuous traits. Using this type of data, we found that putative sexual signal conspicuousness is, on average, (moderately) positively related to attractiveness to individuals of the opposite sex ($r = 0.329$, 95%CI = 0.233 to 0.419; Table S3; Fig. 3). This result is consistent across species given the low heterogeneity at the level of species ($I^2_{[\text{species} = \text{species ID} + \text{phylogeny}]} = 2.3\%$) and therefore potentially generalisable, despite the high overall heterogeneity across effect sizes ($I^2_{\text{total}} = 91.5\%$; Table S4).

Is the conspicuousness of putative sexual signals associated with benefits to their bearers and to their mates?

Although our data primarily represent the benefits of putative sexual signal conspicuousness to the bearers of such signals, these benefits are often shared with or originating from bearers' mates. For example, the mating date or the number of eggs laid are influenced by traits and decisions of both pairing individuals. Thus, we can only distinguish benefits to signal bears from benefits to their mates in some occasions. We faced a similar issue when attempting to differentiate direct from indirect benefits, as this requires a more complex approach than the one we provide here (see meta-analyses exploring this in-depth, e.g. refs. ^{40,57}).

We found that putative sexual signal conspicuousness is, on average, (weakly) positively related to benefits to their bearers and to their mates ($r = 0.165$, 95%CI = 0.133 to 0.197; Table S3; Fig. 3). However, we detected evidence of publication bias for these data, so the actual relationship might be even weaker as positive effect sizes were overrepresented (Fig. S1D-F, Table S7). This finding is potentially consistent across species ($I^2_{[\text{species} = \text{species ID} + \text{phylogeny}]} = 0.7\%$; Table S4). Furthermore, we found that males show, on average, a stronger relationship between putative sexual signal conspicuousness and benefits compared with females (Table S5). We note that these results come from an amalgamation of metrics (Fig. 1), so we discuss each of them in detail below.

First, more conspicuous putative sexual signals are, on average, (moderately) associated with earlier arrival at breeding sites, earlier pairing, or earlier reproduction (hereby simply *earlier timing*; $r = 0.213$, 95%CI = 0.171 to 0.254; Table S3; Fig. 3). Earlier timing can represent individual quality and attractiveness, and may lead to more reproductive opportunities and a better environment for the offspring⁵⁸. We also found that the relationship between timing and putative sexual signal conspicuousness is stronger in males than in females (Table S5).

Second, putative sexual signal conspicuousness is, on average, (weakly) positively related to reproductive success (e.g. number of offspring; $r = 0.157$, 95%CI = 0.121 to 0.193; Table S3; Fig. 3). Various mechanisms can produce a positive relationship between reproductive success and putative sexual signal conspicuousness. For instance, given that

individuals with traits that are more conspicuous tend to be more attractive, these individuals should experience greater mating success and consequently increase their reproductive success if mating with multiple individuals is advantageous (i.e. when Bateman's gradient is positive, generally assumed for males but rarely for females⁵⁰). Moreover, individuals with more conspicuous sexual signals might be more likely to select mates that can provide them with more benefits²³, increasing their own fitness. Individuals with more conspicuous sexual signals may also receive greater reproductive investment from their partners than their counterparts⁵⁹. On the other hand, a positive relationship between sexual signal conspicuousness and reproductive success can arise from a positive association between putative sexual signal conspicuousness and (female) fecundity (e.g. refs. ^{60,61}) or reproductive investment beyond just gametes (e.g. parental care, see below), which would make these conspicuous traits signals of direct benefits to mates. Although we cannot determine which of these mechanisms more frequently explains why individuals with more conspicuous putative sexual signals show greater reproductive success, future studies should address this gap. We also note that the conspicuousness of male flexible putative sexual signals is more strongly associated with reproductive success than that of male and female fixed putative sexual signals (Table S5).

Third, putative sexual signal conspicuousness is, on average, (weakly) positively related to offspring viability (e.g. proportion of eggs hatched) or quality (e.g. offspring size, see also Table S1) ($r = 0.164$, 95%CI = 0.123 to 0.205; Table S3; Fig. 3). More conspicuous sexual signals may indicate that their bearers possess "good genes" that can be passed to the offspring, possibly increasing offspring's viability and quality². However, the same arguments made for reproductive success (e.g. greater reproductive effort from partners) also apply to offspring's viability or quality because they result from genes and investment in the offspring from both parents.

Fourth, putative sexual signal conspicuousness is, on average, (weakly) positively related to greater extra-pair paternity and lower cuckoldry (collectively simply *paternity*; $r = 0.149$, 95%CI = 0.092 to 0.204; Table S3; Fig. 3). While this relationship might occur because more ornamented males are more attractive (i.e. paternity may simply reflect male mating success or be a product of cryptic female choice favouring sperm from attractive males), it is also possible that more ornamented males obtain greater paternity when their conspicuous putative sexual signals signal sperm traits that increase success in sperm competition⁶².

Fifth, putative sexual signal conspicuousness is, on average, (weakly) positively related to the amount of parental care expressed by the signal bearer ($r = 0.08$, 95%CI = 0.022 to 0.136; Table S3; Fig. 3). This is perhaps the clearest evidence that conspicuous traits can signal direct benefits to mates. Still, this relationship might be complex in systems with biparental care if sexual signals from both parents affect parental care performed. This scenario becomes even more complicated when parental care provided by an individual can be modulated by the parental care provided by their social partner¹⁰.

Sixth, putative sexual signal conspicuousness is, on average, (moderately) positively related to territory quality ($r = 0.241$, 95%CI = 0.162 to 0.317; Table S3; Fig. 3). Given that territory quality represents resources that individuals use for their survival and reproduction, greater territory quality should enhance the fitness of the territory's owner as well as of their mates. Unfortunately, our dataset had no information for females regarding this relationship, revealing a dire need to investigate species in which females defend territories (e.g. ref. ⁶³).

Is the conspicuousness of putative sexual signals associated with the individual condition of their bearers?

We found that putative sexual signal conspicuousness is, on average, (weakly) positively related to distinct measures of individual condition ($r = 0.174$, 95%CI = 0.124 to 0.224; Table S3; Fig. 4). Yet, this result can be overestimated as we found evidence of publication bias for these data (Fig. S1G-I; Table S7). Once more, this result is potentially generalisable across taxa ($I^2_{[\text{species} = \text{species ID} + \text{phylogeny}]} = 6.1\%$; Table S4). Moreover, we found that males show, on average, a stronger relationship between fixed putative sexual signal conspicuousness and individual condition compared with females (Table S5).

Individual condition can be measured in many ways (Fig. 1), so we also verified the relationship between each individual condition proxy and putative sexual signal conspicuousness separately. First, putative sexual signal conspicuousness is, on average, (moderately) positively associated with beneficial (external) conditions (e.g. better diet, lower reproductive effort, etc.; $r = 0.263$, 95%CI = 0.215 to 0.31; Table S3; Fig. 4). Second, putative sexual signal conspicuousness is, on average, (weakly) positively associated with body condition (e.g. body mass controlled for structural body size⁶⁴; $r = 0.198$, 95%CI = 0.161 to 0.235; Table S3; Fig. 4). Yet, conspicuousness of fixed putative sexual signals is, on average, more strongly associated with body condition in males than in females (Table S5). Third, putative sexual signal conspicuousness is, on average, (weakly) positively associated with immune or antioxidant capacity ($r = 0.129$, 95%CI = 0.084 to 0.174; Table S3; Fig. 4). Fourth, putative sexual signal conspicuousness is, on average, (weakly) positively associated with parasite resistance (i.e. opposite of parasite load; $r = 0.119$, 95%CI = 0.078 to 0.159; Table S3; Fig. 4). Fifth, putative sexual signal conspicuousness is, on average, (weakly) positively associated with survival ($r = 0.113$, 95%CI = 0.053 to 0.172; Table S3; Fig. 4). However, the relationship between putative sexual signal conspicuousness and survival was greater for males than for females, with the latter being essentially zero (Table S3; Table S5; Fig. 4).

Two hypotheses in the literature explain how condition-dependent sexual signals represent honesty: the costly signalling principle (first proposed by ref. ⁶⁵) and the index hypothesis (e.g. ref. ⁶⁶). The former states that the expression and maintenance of sexual signals require resources that could be spent elsewhere⁶⁵, with higher-quality individuals being expected to deal more effectively with metabolic trade-offs and thus being able to be more ornamented^{67,68}. On the other hand, the index hypothesis does not invoke resource trade-offs to explain sexual signals' condition-dependence, but rather posits that these traits evolve as honest signals of condition by sharing pathways with basic physiological processes⁶⁹⁻⁷¹. These hypotheses are contentious as each has different underlying concepts, with multiple authors proposing distinct features and predictions (see ref. ⁷²). Our results support that (putative) sexual signal conspicuousness is, on average, condition-dependent, but we cannot elucidate which of these two hypotheses is more likely to explain this pattern.

Is the conspicuousness of putative sexual signals associated with the expression of other traits of their bearers?

We found that putative sexual signal conspicuousness is, on average, (moderately) positively related to body size ($r = 0.23$, 95%CI = 0.144 to 0.312; Table S3; Fig. 4), an apparently generalisable finding across species ($I^2_{[\text{species} = \text{species ID} + \text{phylogeny}]} = 3.6\%$; Table S4). Body size can be under positive directional selection if larger individuals are more fecund⁷³ or experience greater success in intrasexual competition². Given that sexual signal conspicuousness is also predicted to be under positive directional sexual selection⁷⁴, a positive relationship between sexual signal conspicuousness and body size can occur. In such a scenario, trait conspicuousness would signal direct benefits to prospective mates. However, larger body size can be constrained or even disfavoured in some taxa (e.g. ref. ⁷⁵), so this rationale is not universal.

We found that putative sexual signal conspicuousness is, on average, (moderately) positively related to aggression and social dominance (e.g. greater number of aggressive behaviours performed to hetero- and conspecific intruders; $r = 0.205$, 95%CI = 0.047 to 0.354; Table S3; Fig. 4). However, this result is not as generalisable across species as our other findings ($I^2_{[\text{species} = \text{species ID} + \text{phylogeny}]} = 14.6\%$; Table S4). Greater trait conspicuousness then may signal one's status to others interested in battling for resources, ultimately deterring costly fights⁷⁶. Note that, *a priori*, if these resources are not mates, these signals have no connection to sexual selection, highlighting that conspicuous traits might not necessarily be sexual signals. Yet, conspicuous traits that signal to rivals can also be used for mate selection, even if this is not their primary function. After all, greater success in competition for resources should be related to greater access to resources, meaning possible benefits to mates (e.g. territory quality, more competitive offspring if heritable).

We found that putative sexual signal conspicuousness is, on average, (weakly) positively related to the expression of traits that increase success in sperm competition (e.g. more or better sperm, larger testes; $r = 0.107$, 95%CI = 0.029 to 0.185; Table S3; Fig. 4). This result appears to be generalisable across taxa, but not across studies ($I^2_{[\text{species} = \text{species ID} + \text{phylogeny}]} = 1.2\%$, $I^2_{\text{across-studies}} = 43\%$; Table S4). Highly ornamented males could be wasting resources by investing in traits related to sperm competition if, being more attractive, they can experience a lower risk of sperm competition by biasing cryptic female choice in their favour (e.g. ref. ⁷⁷) or reducing the chances that females they mate with remate with another male (e.g. ref. ⁷⁸). However, traits that enhance sperm competition success are potentially under positive directional selection for all males³¹ (but see ref. ⁷⁹) and thus may be expected to covary with sexual signal conspicuousness. Alternatively, this pattern can occur if male ornamentation honestly signals their fertilisation ability to females³¹. Interestingly, we also

detected that flexible putative sexual signals were more strongly related to the expression of sperm competition-related traits than fixed putative sexual signals (Table S5).

Lastly, we found that putative sexual signal conspicuousness is, on average, (weakly) positively related to age ($r = 0.196$, 95%CI = 0.043 to 0.34; Table S3; Fig. 4), a result that may be generalisable across species ($I^2_{[\text{species} = \text{species ID} + \text{phylogeny}]} = 7.4\%$; Table S4). Sexual signal conspicuousness should increase with age (but see ref. ²⁴) as older individuals are under greater terminal investment selection (i.e. to increase reproductive effort before dying^{80,81}). Moreover, when sexual signal conspicuousness is positively related to age, trait conspicuousness essentially signals individual ability to survive for longer⁸². We note, however, that our results regarding age might be conflated by mating experience (i.e. older individuals are more likely to have mated than their younger counterparts), although a meta-analysis controlling for this showed a similar result²⁴.

Do sex and trait type play a role in the relationships assessed?

As shown in previous sections, we found that, compared with male fixed putative sexual signals, the conspicuousness of female fixed putative sexual signals is, on average, less condition-dependent and more weakly related to the benefits provided to bearers and to mates. However, these sex differences only emerged when analysing all proxies of these variables together, or when evaluating some specific proxies separately, such as timing, body condition, and survival. Therefore, our results only partially support the predictions that originate from the idea that males are under stronger sexual selection than females^{1,50,51}. Most importantly, our findings indicate that the conspicuousness of putative sexual signals in both males and females are, on average, associated with greater benefits to bearers and to mates, greater individual condition, and body size. This emphasises that researchers need to consider

the role of individuals of both sexes when exploring processes and patterns related to sexual selection.

In contrast with the effects of sex on our results, we found only a few instances in which trait type played a role in the relationships between various factors and the conspicuousness of putative sexual signals. More specifically, considering only male putative sexual signals, the conspicuousness of flexible traits was more strongly related to signal bearers' reproductive success and ability in sperm competition than fixed traits. These findings might be affected by limited or absent data on behavioural signals in our dataset for males and females, respectively. Still, we show that, indeed, different trait types are associated with different patterns that are predicted by the theory of sexual selection, which requires further attention from researchers.

Is the strength of sexual selection on the conspicuousness of a trait associated with the relationship between the conspicuousness of the same trait and other variables?

The relationships between conspicuous traits and multiple variables we explored in previous sections involved traits *assumed* to be preferred by mates (i.e. putative sexual signals). Still, these traits could actually be unattractive to mates or attractive in the opposite direction than the one predicted (e.g. preference for dull colours instead of vivid colours). To provide insights into sexual signals, we sought putative sexual signals in our dataset for which we had two pieces of information: how their conspicuousness was related to attractiveness to mates and how their conspicuousness was related to other variables within our framework (e.g. benefits, individual condition, etc.; Fig. 1). For each putative sexual signal of each species, we calculated an overall effect size for the former (hereby *Zr-attractiveness*) and an overall effect size for the latter (hereby *Zr-benefits*, *Zr-condition*, etc.). We then were able to perform meta-regressions to verify how the strength of sexual selection on a putative sexual signal

(i.e. Zr-attractiveness) relates to the strength of the association between the conspicuousness of that putative sexual signal and either benefits (Zr-benefits), individual condition (Zr-condition), or other traits (Zr-size, Zr-dominance, Zr-sperm, Zr-age).

We found that sexual selection on putative sexual signal conspicuousness is positively associated with the relationship between putative sexual signal conspicuousness and both the benefits they provide (Fig. 5A; Fig. S3A) and bearers' individual condition (Fig. 5B; Fig. S3B; Table S8). However, we found no evidence that sexual selection on putative sexual signal conspicuousness is associated with the relationship between putative sexual signal conspicuousness and other traits (Fig. 5C-F; Fig. S3C-E; Table S8). Nonetheless, data for these analyses were scarce (Table S8), so these results require extra caution as they might not be generalisable.

Theory predicts that mate choosiness, and thus pre-copulatory sexual selection, increases with variation in mate quality^{52,53}. Therefore, the positive relationship we found between Zr-attractiveness and Zr-benefits is expected, but what about other variables? It seems plausible that greater sexual selection on conspicuousness intensifies its condition-dependence as an escalation of honest signalling (generating the positive relationship between Zr-attractiveness and Zr-condition we found). By contrast, the relationship between conspicuousness and other traits might be more variable because greater body size, social dominance, expression of traits related to sperm competition, and age may lead to benefits to their bearers only in certain situations. Perhaps the most valuable insight from these results is that even when Zr-attractiveness is zero or negative (representing mate preference for lower conspicuousness), other relationships between conspicuousness and distinct variables (e.g. Zr-benefits, Zr-condition) can be positive (and vice-versa). This means that researchers should not assume that positive relationships between putative sexual signal conspicuousness and different variables attest that they are, indeed, sexually selected.

327

328 *Future opportunities for research on putative sexual signals*

329 Given that the relationship between the conspicuousness of putative sexual signals and
330 attractiveness to mates represents the core of the theory on mate choice, and that our dataset
331 represents the information collected by most meta-analyses on putative sexual signals, it is
332 astonishing that this relationship was available for only a quarter of the species (Fig. 2) and
333 represented less than 8% of all effect sizes in our dataset. The scarcity of data on
334 attractiveness suggests that biologists may inspect associations between conspicuous traits
335 and their potential benefits or costs without attesting to the attractive function of these traits
336 in the first place. However, we remind researchers that conspicuous traits can serve purposes
337 other than mate attraction, such as to signal status to conspecifics regardless of sex (see
338 previous sections), to deter⁸³ or confuse^{84,85} predators, or to avoid sexual harassment⁸⁶.
339 Therefore, it is imperative to first examine the primary function of conspicuous traits, as
340 making assumptions about them can hamper our knowledge about their evolution. In fact, our
341 findings that signals under stronger mate choice are more strongly associated with benefits
342 they provide and with their condition-dependence suggest that the relationships we assessed
343 throughout our study (i.e. between putative sexual signals and benefits, condition, and traits)
344 should be much stronger if we could identify and select only the signals that are truly
345 attractive to mates.

346 In addition to the paucity of information related to the attractiveness of conspicuous
347 traits, our dataset contains other limitations inherited from the primary meta-analyses that we
348 used as sources, which largely represent deficits in the literature on sexual selection⁴. More
349 specifically, half of the species in our dataset are birds (Fig. 2) as most meta-analyses that we
350 collected data from focus on bird colouration (e.g. refs. ^{8–10,13–16,19,20,25,28,29,32,37,38,42,43,45,48}),
351 resulting in a dataset where other traits and animal groups (e.g. invertebrates) are

underrepresented (Figs. S4 and S5). Notably, female behaviours as putative sexual signals were almost absent from our dataset despite being ubiquitous in nature (e.g. pheromones⁸⁷) and potentially subjected to sexual selection⁸⁸, possibly leading to similar patterns to the ones we found for other putative sexual signals (e.g. condition-dependence⁸⁹). Although more data may have become available after the primary meta-analyses we used as data sources were published (i.e. data not included in our dataset), information on female behavioural sexual signals and other neglected topics likely remains scarce. Collecting data on overlooked traits and taxa should address these gaps and may even challenge our perceptions, such as of stereotypical sex roles^{90–92}. However, stronger incentives may be necessary to achieve this goal⁴.

While our study represents a solid advancement for the theory of sexual selection by testing many of its predictions, and most of our results appear generalisable across taxa, we stress that conspicuous traits in nature are extremely diverse. This means that existing and future primary studies and meta-analyses on sexual signals remain valuable if they provide in-depth investigations on factors that are unique to certain conspicuous traits (e.g. type of pigment for colourful traits⁴⁸). More importantly, the diversity we see in nature reinforces the urgency in acquiring data beyond certain conspicuous traits and taxonomic groups. Failing to do so risks leaving us with biased and stagnant evidence, dimming the spark that Darwin ignited over 150 years ago.

Material and Methods

General

Our methodology was described in our pre-registration⁹³ and in a twin study that essentially used the same dataset as we did in the present study⁹⁴. We report author contributions using MeRiT guidelines⁹⁵ and the CRediT statement⁹⁶.

377

378 *Deviations from the pre-registration*

379 We planned to use the modality of putative sexual signals (i.e. whether they were visual,
380 acoustic, or other types of signals) as a moderator in meta-analytical models but we preferred
381 not to proceed with this decision because this variable overlapped with trait type (e.g. most
382 fixed putative sexual signals were visual traits). We did not verify the effect of re-extracted
383 vs. originally reported data as our related study using the same dataset showed that data
384 replicability was high⁹⁴. PP adjusted variables within our framework from our pre-registration
385 (compare Table S1 with Table 1 from ref. ⁹³, see also ref. ⁹⁴).

386

387 *Putative sexual signal conspicuousness and variables within our framework*

388 Our dataset contains information on the relationship between putative sexual signal
389 conspicuousness and many variables (Table S1; Fig. 1). To clarify, putative sexual signals
390 refer to traits thought to be involved in mate attraction (by authors of empirical papers or of
391 primary meta-analyses that we used as data sources, see next section; weapons or body size
392 were not considered valid putative sexual signals; see also ref. ⁹⁷). On the other hand,
393 conspicuousness refers to the expected direction of attractiveness to mates regarding the
394 expression of putative sexual signals. For instance, more colourful traits are expected to be
395 more attractive, and thus greater values of certain colour metrics that reflect this (e.g.
396 chroma) are deemed more conspicuous. However, despite using conspicuousness throughout
397 the manuscript for all putative sexual signals, other terms could be more appropriate in many
398 cases. For example, more symmetric traits are often expected to be more appealing to mates,
399 so they were deemed more conspicuous, even though this term may be misleading here.
400 Conspicuousness for other putative sexual signals may be even more confusing as the
401 expectations on the direction of their appeal is expected to differ across taxa or scenarios, e.g.

sounds with higher frequency are expected to be more appealing for birds¹¹ but less appealing for amphibians²¹. PP ascertained the expected direction of attractiveness (i.e. conspicuousness) based on information provided by authors of empirical and primary meta-analyses (see Table S2) but we note that what is considered more appealing to mates according to these authors has often not been tested. In fact, PP was not able to infer the expected direction of attractiveness for certain traits when we directly extracted data from empirical studies. PP then made additional analyses (see below) in which effect sizes with ambiguous direction were removed or changed to their opposite value to ensure our results were robust (see Table S3).

Variables within our framework are explained throughout the manuscript as results are reported, while their direction and more examples are given in Table S1. Meta-analyses' authors were often vague regarding the exact data they extracted, so interconnected proxies, such as reproductive success and viability measures, were difficult to separate. For instance, whether "fledgling success" means number of fledglings (reproductive success) or proportion of offspring that fledged from all eggs laid (viability) was unclear in many cases, so PP deemed most of them as reproductive success given that this is a more diverse measure.

Data collection

As previously stated, our data collection is fully reported in ref. ⁹⁴. Briefly, PP compiled individual effect sizes from 41 primary meta-analyses^{7–21,24–49}, which contained relevant data for our study from 1,196 empirical sources. Then, all authors (re-)extracted all data related to putative sexual signals from 243 empirical studies^{54–56,98–340} that these meta-analyses used as sources. Most of these studies were selected because multiple meta-analyses used them and produced mismatching individual effect sizes⁹⁴. This process was done as part of a reproducibility and replicability project⁹⁴ but also provided the base to the present study as it

essentially deduplicated and ensured the quality of our dataset (see below). After data re-extractions, PP replaced the individual effect sizes reported by meta-analyses with re-extracted effect sizes for these 243 empirical studies. Other effect sizes reported by meta-analyses (from empirical studies whose data we did not re-extract) were maintained in the dataset. Despite these 243 empirical studies being cited as data sources by meta-analyses, many of the effect sizes re-extracted by us were not actually reported by primary meta-analyses or, alternatively, were reported by primary meta-analyses with a different value from the ones we obtained during re-extraction (see ref. ⁹⁴). Thus, to some extent, our dataset contains data that have not been used in previous meta-analyses. PP additionally removed identically reported effect sizes (both in description and in value) from other duplicated empirical studies (those that we did not extract data from). This process ensured that all individual effect sizes in our dataset were unique, in contrast to meta-meta-analyses that analyse mean effect sizes from primary meta-analyses (e.g. refs. ^{341–343}), which can encompass repeated data (as the same empirical studies can be used by multiple primary meta-analyses). PP further removed from the dataset data that were unfit to verify the relationship between putative sexual signal conspicuousness and distinct variables, such as measurements of parental care after manipulation of putative sexual signals (e.g. ref. ²³⁶). After these procedures, our dataset tallied 7,428 effect sizes, with 4,237 of them (57% of the dataset) being extracted by us and the remaining effect sizes being originally reported by primary meta-analyses^{7–21,24–49}. We used Fisher's Z_r as our effect size, transforming it to correlation coefficient (r) when reporting most of our results. Details on the calculation of effect sizes, including all equations used, are reported in ref. ⁹⁴.

Analyses

PP constructed separate meta-analytical models to verify the relationship between putative sexual signal conspicuousness and each variable within our framework, resulting in seven sets of models (one set for each background colour in Figs. 3 and 4). PP used multilevel meta-analytical models because effect sizes were not independent of one another. Different effect sizes could share the same (empirical) study ID, species ID, and trait type ID (i.e. flexible or fixed trait, nested within-species). Thus, in addition to effect size ID, PP used these variables as random factors in our models to control for non-independence. PP also included a correlation matrix related to phylogenetic relatedness for the species in our model as a random factor³⁴⁴. From meta-analytical models with all these random factors, PP quantified I^2_{total} (a measure of heterogeneity not attributed to sampling error³⁴⁵) and how much of it each random factor explained (partial I^2 ; see Table S4). PP fitted meta-analytical models with the following fixed factors: none (only intercept, showing the average relationship), sub variable (only models involving benefits and individual condition, see Table S1), sex (male, female, or unknown) and trait type (fixed or flexible). PP followed ref.³⁴⁶ to interpret the magnitude to mean effect sizes (as Zr , before converting them to r , “weak” for values up to 0.2, “moderate” for values up to 0.5, and “high” for greater values).

PP also constructed additional versions of all models described above, in which we removed or inverted the value of data points whose direction was ambiguous (e.g. putative sexual signals without information on expected direction for mate attraction or data with direction not clearly reported in empirical studies). The results of these analyses were very similar to the ones with data points as originally extracted (Table S3).

We tested for signs of publication bias in meta-analytical models using three approaches (see Table S7, Figs. S1 and S2). First, we visually evaluated funnel asymmetry for each model using funnel plots, which show the residuals of meta-analytical models containing all moderators against effect sizes’ precision (i.e. inverse of standard error).

Second, we further assessed funnel asymmetry with an alternative approach to Egger's regression: using the inverse of the effective sample size as a moderator in a multilevel meta-analytical model³⁴⁷. Third, in the same meta-analytical models of the second approach, we verified time-lag bias using publication year as a moderator³⁴⁸.

To verify whether the relationship between putative sexual signal conspicuousness and attractiveness is associated with the relationship between putative sexual signal conspicuousness and other variables within our framework, we sought conspicuous traits in our dataset with both of these relationships. We used two approaches to collect and link these data. In the first approach (hereby *across-studies*, Fig. 5), we calculated a mean effect size for each putative sexual signal (across different empirical studies examining a given species) regarding the relationship between its conspicuousness and attractiveness to mates (Zr-attractiveness). We then linked these estimates to mean effect sizes regarding the relationship between the conspicuousness of that same putative sexual signal and another variable (Zr-benefits, Zr-condition, etc.), also across different empirical studies examining a given species. This first approach assumes that the relationship between attractiveness and putative sexual conspicuousness across time and populations is consistent, which is not necessarily true³⁴⁹. To ameliorate this issue, our second approach (hereby *within-studies*; Fig. S3) only links these relationships (Zr-attractiveness with either Zr-benefits, Zr-condition, Zr-size, Zr-dominance, Zr-sperm, or Zr-age) extracted from the same empirical study. This second approach is more reliable but yields fewer data points, such that the relationship between Zr-attractiveness and Zr-sperm could not be analysed with this second approach as a single data point was available. We only show the results of the first approach in the manuscript as both approaches generated similar qualitative results.

Meta-regressions described above accounted for the variation of effect sizes serving as the response variables (i.e. Zr-benefits, Zr-condition, etc.), but disregarded the dispersal of

effect sizes serving as predictor variables (i.e. Zr-attractiveness). In other words, they are univariate models. To correct this, we conducted bivariate models, in which the dispersal of both response and predictor variables is considered. However, this approach yields much larger confidence intervals and estimates generated may not be reliable as we could not preclude divergent transitions when running these analyses. Thus, we preferred to show results of only univariate models (with the across-studies approach) in the manuscript, but results for other approaches and models can be found in Table S8.

All statistical analyses were conducted in the software R 4.4.0³⁵⁰. We fitted meta-analytical models (except for bivariate models) using the *rma.mv* function from the package *metafor*³⁵¹. Bivariate models were fitted using the package *brms*³⁵², in which we ran three chains, each with 10,000 iterations plus another 10,000 burn-in iterations. In these analyses, we adopted Stan's standard uninformative priors, and set the maximum tree depth to 12 and the adaptive delta to 0.999. We calculated R^2 ³⁵³ and I^2 using, respectively, the *r2_ml* and *i2_ml* function from the package *orchaRd*³⁵⁴. Phylogenetic trees were built using the packages *ape*³⁵⁵ and *rotl*³⁵⁶. We performed pairwise comparisons (two-tailed z-tests) using the function *glht* from the package *multcomp*³⁵⁷.

Acknowledgements

We thank László Zsolt Garamszegi, Sarah Guindre-Parker, América Hernández Martínez, and Tim Parker for sending us data from their meta-analyses. We also thank Yong Zhi Foo for contributing to the conceptualisation of this project and both Russell Bonduriansky and Michael Kasumovic for feedback on the manuscript.

Funding

525 ARC (Australian Research Council) Discovery Project grants DP210100812 and
526 DP230101248 (PP, ML, YY, SN)
527 Canada Excellence Research Chair Program CERC-2022-00074 (SN)
528 Coordenação de Aperfeiçoamento de Pessoal de Nível Superior (CAPES) as part of the
529 Programa de Desenvolvimento da Pós-Graduação PDPG 88887.803974/2023-00 (RCMR)

530

531 **Author contributions**

532 Conceptualisation: PP, ML, RCMR, AM, YY, SN

533 Data curation: PP

534 Formal analysis: PP

535 Funding acquisition: SN

536 Investigation: PP, ML, RCMR, AM, YY, SN

537 Methodology: PP, SN

538 Project administration: PP

539 Software: PP

540 Supervision: SN

541 Visualisation: PP

542 Writing – original draft: PP, SN

543 Writing – review & editing: PP, ML, RCMR, AM, YY, SN.

544

545 **Competing interests**

546 We declare no competing interests.

547

548 **Data and code availability**

549 All data and code used in this study are available at:

550 https://osf.io/6njem/?view_only=7b01538fb32e4f78b7130b6e8f303649.

References

1. Darwin, C. *The Descent of Man, and Selection in Relation to Sex*. (John Murray, London, UK, 1871).
2. Andersson, M. *Sexual Selection*. (Princeton University Press, Princeton, New Jersey, 1994).
3. Rosenthal, G. G. *Mate Choice: The Evolution of Sexual Decision Making from Microbes to Humans*. (Princeton University Press, Princeton, NJ, 2017).
4. Pollo, P., Lagisz, M., Yang, Y., Culina, A. & Nakagawa, S. Synthesis of sexual selection: a systematic map of meta-analyses with bibliometric analysis. *Biol Rev* **4**, (2024).
5. Kokko, H., Brooks, R., Jennions, M. D. & Morley, J. The evolution of mate choice and mating biases. *Proc R Soc B Biol Sci* **270**, 653–664 (2003).
6. Lindsay, W. R. *et al.* Endless forms of sexual selection. *PeerJ* **7**, 1–54 (2019).
7. Dougherty, L. R., Rovenolt, F., Luyet, A., Jokela, J. & Stephenson, J. F. Ornaments indicate parasite load only if they are dynamic or parasites are contagious. *Evol Lett* **7**, 176–190 (2023).
8. Romano, A., Saino, N. & Møller, A. P. Viability and expression of sexual ornaments in the barn swallow *Hirundo rustica*: a meta-analysis. *J Evol Biol* **30**, 1929–1935 (2017).
9. Guindre-Parker, S. & Love, O. P. Revisiting the condition-dependence of melanin-based plumage. *J Avian Biol* **45**, 29–33 (2014).
10. Hegyi, G., Kötél, D. & Laczi, M. Direct benefits of mate choice: a meta-analysis of plumage colour and offspring feeding rates in birds. *Sci Nat* **102**, 62 (2015).
11. Garamszegi, L. Z. Bird song and parasites. *Behav Ecol Sociobiol* **59**, 167–180 (2005).
12. Garamszegi, L. Z. & Møller, A. P. Extrapair paternity and the evolution of bird song. *Behav Ecol* **15**, 508–519 (2004).

- 576 13. Parker, T. H. & Ligon, J. D. Female mating preferences in red junglefowl: a meta-
577 analysis. *Ethol Ecol Evol* **15**, 63–72 (2003).
- 578 14. Nakagawa, S., Ockendon, N., Gillespie, D. O. S., Hatchwell, B. J. & Burke, T.
579 Assessing the function of house sparrows' bib size using a flexible meta-analysis
580 method. *Behav Ecol* **18**, 831–840 (2007).
- 581 15. Yasukawa, K., Enstrom, D. A., Parker, P. G. & Jones, T. C. Male Red-winged
582 Blackbirds with experimentally dulled epaulets experience no disadvantage in sexual
583 selection. *J Field Ornithol* **81**, 31–41 (2010).
- 584 16. Romano, A., Costanzo, A., Rubolini, D., Saino, N. & Møller, A. P. Geographical and
585 seasonal variation in the intensity of sexual selection in the barn swallow *Hirundo*
586 *rustica*: a meta-analysis. *Biol Rev* **92**, 1582–1600 (2017).
- 587 17. Soma, M. & Garamszegi, L. Z. Rethinking birdsong evolution: meta-analysis of the
588 relationship between song complexity and reproductive success. *Behav Ecol* **22**, 363–
589 371 (2011).
- 590 18. Garamszegi, L. Z. *et al.* Age-dependent expression of song in the collared flycatcher,
591 *Ficedula albicollis*. *Ethology* **113**, 246–256 (2007).
- 592 19. Koch, R. E., Wilson, A. E. & Hill, G. E. The importance of carotenoid dose in
593 supplementation studies with songbirds. *Physiol Biochem Zool* **89**, 61–71 (2016).
- 594 20. Gontard-Danek, M.-C. & Møller, A. P. The strength of sexual selection: a meta-
595 analysis of bird studies. *Behav Ecol* **10**, 476–486 (1999).
- 596 21. McLean, M. J., Bishop, P. J. & Nakagawa, S. Male quality, signal reliability and
597 female choice: assessing the expectations of inter-sexual selection. *J Evol Biol* **25**,
598 1513–1520 (2012).
- 599 22. Amundsen, T. Why are female birds ornamented? *Trends Ecol Evol* **15**, 149–155
600 (2000).

- 601 23. Pollo, P., Nakagawa, S. & Kasumovic, M. M. The better, the choosier: a meta-analysis
602 on interindividual variation of male mate choice. *Ecol Lett* **25**, 1305–1322 (2022).
- 603 24. Dougherty, L. R. Meta-analysis reveals that animal sexual signalling behaviour is
604 honest and resource based. *Nat Ecol Evol* **5**, 688–699 (2021).
- 605 25. Evans, S. R., Hinks, A. E., Wilkin, T. A. & Sheldon, B. C. Age, sex and beauty:
606 methodological dependence of age- and sex-dichromatism in the great tit *Parus major*.
607 *Biol J Linn Soc* **101**, 777–796 (2010).
- 608 26. Fiske, P., Rintamaki, P. T. & Karvonen, E. Mating success in lekking males: a meta-
609 analysis. *Behav Ecol* **9**, 328–338 (1998).
- 610 27. Garamszegi, L. Z. & Eens, M. Brain space for a learned task: strong intraspecific
611 evidence for neural correlates of singing behavior in songbirds. *Brain Res Rev* **44**,
612 187–193 (2004).
- 613 28. Griffith, S. C., Parker, T. H. & Olson, V. A. Melanin- versus carotenoid-based sexual
614 signals: is the difference really so black and red? *Anim Behav* **71**, 749–763 (2006).
- 615 29. Hernández, A., Martínez-Gómez, M., Beamonte-Barrientos, R. & Montoya, B.
616 Colourful traits in female birds relate to individual condition, reproductive
617 performance and male-mate preferences: a meta-analytic approach. *Biol Lett* **17**,
618 20210283 (2021).
- 619 30. Jennions, M. D., Møller, A. P. & Petrie, M. Sexually selected traits and adult survival:
620 a meta-analysis. *Q Rev Biol* **76**, 3–36 (2001).
- 621 31. Mautz, B. S., Møller, A. P. & Jennions, M. D. Do male secondary sexual characters
622 signal ejaculate quality? A meta-analysis. *Biol Rev* **88**, 669–682 (2013).
- 623 32. Meunier, J., Pinto, S. F., Burri, R. & Roulin, A. Eumelanin-based coloration and fitness
624 parameters in birds: a meta-analysis. *Behav Ecol Sociobiol* **65**, 559–567 (2011).

- 625 33. Møller, A. P. & Alatalo, R. V. Good-genes effects in sexual selection. *Proc R Soc B*
626 *Biol Sci* **266**, 85–91 (1999).
- 627 34. Møller, A. P. & Jennions, M. How important are direct fitness benefits of sexual
628 selection? *Naturwissenschaften* **88**, 401–415 (2001).
- 629 35. Møller, A. P. & Thornhill, R. Bilateral symmetry and sexual selection: a meta-analysis.
630 *Am Nat* **151**, 174–192 (1998).
- 631 36. Moore, F. R., Shuker, D. M. & Dougherty, L. Stress and sexual signaling: a systematic
632 review and meta-analysis. *Behav Ecol* **27**, 363–371 (2016).
- 633 37. Nolzco, S., Delhey, K., Nakagawa, S. & Peters, A. Ornaments are equally informative
634 in male and female birds. *Nat Commun* **13**, 5917 (2022).
- 635 38. Parker, T. H. What do we really know about the signalling role of plumage colour in
636 blue tits? A case study of impediments to progress in evolutionary biology. *Biol Rev*
637 **88**, 511–536 (2013).
- 638 39. Parker, T. H., Barr, I. R. & Griffith, S. C. The blue tit's song is an inconsistent signal of
639 male condition. *Behav Ecol* **17**, 1029–1040 (2006).
- 640 40. Prokop, Z. M., Michalczyk, Ł., Drobniak, S. M., Herdegen, M. & Radwan, J. Meta-
641 analysis suggests choosy females get sexy sons more than 'good genes'. *Evolution* **66**,
642 2665–2673 (2012).
- 643 41. Robinson, C. M. & Creanza, N. Species-level repertoire size predicts a correlation
644 between individual song elaboration and reproductive success. *Ecol Evol* **9**, 8362–8377
645 (2019).
- 646 42. Sánchez-Tójar, A. *et al.* Meta-analysis challenges a textbook example of status
647 signalling and demonstrates publication bias. *eLife* **7**, 1–26 (2018).
- 648 43. Santos, E. S. A., Scheck, D. & Nakagawa, S. Dominance and plumage traits: meta-
649 analysis and metaregression analysis. *Anim Behav* **82**, 3–19 (2011).

- 650 44. Simons, M. J. P. & Verhulst, S. Zebra finch females prefer males with redder bills
651 independent of song rate—a meta-analysis. *Behav Ecol* **22**, 755–762 (2011).
- 652 45. Simons, M. J. P., Cohen, A. A. & Verhulst, S. What does carotenoid-dependent
653 coloration tell? Plasma carotenoid level signals immunocompetence and oxidative
654 stress state in birds—a meta-analysis. *PLoS One* **7**, e43088 (2012).
- 655 46. Street, S. E., Cross, C. P. & Brown, G. R. Exaggerated sexual swellings in female
656 nonhuman primates are reliable signals of female fertility and body condition. *Anim*
657 *Behav* **112**, 203–212 (2016).
- 658 47. Thornhill, R. & Møller, A. P. The relative importance of size and asymmetry in sexual
659 selection. *Behav Ecol* **9**, 546–551 (1998).
- 660 48. Weaver, R. J., Santos, E. S. A., Tucker, A. M., Wilson, A. E. & Hill, G. E. Carotenoid
661 metabolism strengthens the link between feather coloration and individual quality. *Nat*
662 *Commun* **9**, 73 (2018).
- 663 49. White, T. E. Structural colours reflect individual quality: a meta-analysis. *Biol Lett* **16**,
664 20200001 (2020).
- 665 50. Bateman, A. J. Intra-sexual selection in *Drosophila*. *Heredity (Edinb)* **2**, 349–368
666 (1948).
- 667 51. Janicke, T., Häderer, I. K., Lajeunesse, M. J. & Anthes, N. Darwinian sex roles
668 confirmed across the animal kingdom. *Sci Adv* **2**, e1500983 (2016).
- 669 52. Parker, G. A. Mate quality and mating decisions. in *Mate choice* (ed. Bateson, P.) 141–
670 166 (Cambridge University Press, Cambridge, UK, 1983).
- 671 53. Johnstone, R. A., Reynolds, J. D. & Deutsch, J. C. Mutual mate choice and sex
672 differences in choosiness. *Evolution* **50**, 1382–1391 (1996).
- 673 54. Arak, A. Female mate selection in the natterjack toad: active choice or passive
674 attraction? *Behav Ecol Sociobiol* **22**, 317–327 (1988).

- 675 55. Cherry, M. I. Sexual selection in the raucous toad, *Bufo rangeri*. *Anim Behav* **45**, 359–
676 373 (1993).
- 677 56. Siefferman, L. & Hill, G. E. Structural and melanin coloration indicate parental effort
678 and reproductive success in male eastern bluebirds. *Behav Ecol* **14**, 855–861 (2003).
- 679 57. Prokuda, A. Y. & Roff, D. A. The quantitative genetics of sexually selected traits,
680 preferred traits and preference: a review and analysis of the data. *J Evol Biol* **27**, 2283–
681 2296 (2014).
- 682 58. Price, T., Kirkpatrick, M. & Arnold, S. J. Directional selection and the evolution of
683 breeding date in birds. *Science* **240**, 798–799 (1988).
- 684 59. Horváthová, T., Nakagawa, S. & Uller, T. Strategic female reproductive investment in
685 response to male attractiveness in birds. *Proc R Soc B Biol Sci* **279**, 163–170 (2011).
- 686 60. Mobley, K. B., Morrongiello, J. R., Warr, M., Bray, D. J. & Wong, B. B. M. Female
687 ornamentation and the fecundity trade-off in a sex-role reversed pipefish. *Ecol Evol* **8**,
688 9516–9525 (2018).
- 689 61. Lüdtke, D. U. & Foerster, K. A female color ornament honestly signals fecundity.
690 *Front Ecol Evol* **7**, 1–9 (2019).
- 691 62. Macartney, E. L., Morrison, K., Snook, R. R., Lagisz, M. & Nakagawa, S. Intra-
692 specific correlations between ejaculate traits and competitive fertilization success: a
693 meta-analysis across species and fertilization modes. *Evolution* **78**, 497–510 (2024).
- 694 63. Butchart, S. H. M., Seddon, N. & Ekstrom, J. M. M. Polyandry and competition for
695 territories in bronze-winged jacanas. *J Anim Ecol* **68**, 928–939 (1999).
- 696 64. Jakob, E. M., Marshall, S. D. & Uetz, G. W. Estimating fitness: a comparison of body
697 condition indices. *Oikos* **77**, 61–67 (1996).
- 698 65. Zahavi, A. Mate selection—a selection for a handicap. *J Theor Biol* **53**, 205–214
699 (1975).

- 700 66. Hamilton, W. D. & Zuk, M. Heritable true fitness and bright birds: a role for parasites?
701 *Science* **218**, 384–387 (1982).
- 702 67. Grafen, A. Biological signals as handicaps. *J Theor Biol* **144**, 517–546 (1990).
- 703 68. Getty, T. Sexually selected signals are not similar to sports handicaps. *Trends Ecol*
704 *Evol* **21**, 83–88 (2006).
- 705 69. Maynard Smith, J. & Harper, D. G. C. Animal signals: models and terminology. *J*
706 *Theor Biol* **177**, 305–311 (1995).
- 707 70. Hill, G. E. Condition-dependent traits as signals of the functionality of vital cellular
708 processes. *Ecol Lett* **14**, 625–634 (2011).
- 709 71. Hill, G. E., Weaver, R. J. & Powers, M. J. Carotenoid ornaments and the spandrels of
710 physiology: a critique of theory to explain condition dependency. *Biol Rev* **98**, 2320–
711 2332 (2023).
- 712 72. Weaver, R. J., Koch, R. E. & Hill, G. E. What maintains signal honesty in animal
713 colour displays used in mate choice? *Philosophical Transactions of the Royal Society*
714 *B: Biological Sciences* **372**, (2017).
- 715 73. Honěk, A. Intraspecific variation in body size and fecundity in insects: a general
716 relationship. *Oikos* **66**, 483–492 (1993).
- 717 74. Kokko, H., Jennions, M. D. & Brooks, R. Unifying and testing models of sexual
718 selection. *Annu Rev Ecol Evol Syst* **37**, 43–66 (2006).
- 719 75. Székely, T., Freckleton, R. P. & Reynolds, J. D. Sexual selection explains Rensch's
720 rule of size dimorphism in shorebirds. *Proc Natl Acad Sci U S A* **101**, 12224–12227
721 (2004).
- 722 76. Rohwer, S. The social significance of avian winter plumage variability. *Evolution* **29**,
723 593–610 (1975).

- 724 77. Pilastro, A., Simonato, M., Bisazza, A. & Evans, J. P. Cryptic female preference for
725 colorful males in guppies. *Evolution* **58**, 665–669 (2004).
- 726 78. Kiyose, K., Katsuki, M., Suzaki, Y. & Okada, K. Female remating decisions and mate
727 choice benefits in the beetle *Gnatocerus cornutus*. *Behav Ecol Sociobiol* **76**, (2022).
- 728 79. Dougherty, L. R., Skirrow, M. J. A., Jennions, M. D. & Simmons, L. W. Male
729 alternative reproductive tactics and sperm competition: a meta-analysis. *Biol Rev* **97**,
730 1365–1388 (2022).
- 731 80. Clutton-Brock, T. H. Reproductive effort and terminal investment in iteroparous
732 animals. *Am Nat* **123**, 212–229 (1984).
- 733 81. Foo, Y. Z., Lagisz, M., O’Dea, R. E. & Nakagawa, S. The influence of immune
734 challenges on the mean and variance in reproductive investment: a meta-analysis of the
735 terminal investment hypothesis. *BMC Biol* **21**, (2023).
- 736 82. Kokko, H. Good genes, old age and life-history trade-offs. *Evol Ecol* **12**, 739–750
737 (1998).
- 738 83. Mizuno, A. *et al.* A systematic review and meta-analysis of eyespot anti-predator
739 mechanisms. *eLife* **13**, (2024).
- 740 84. Henríquez-Piskulich, P., Stuart-Fox, D., Elgar, M., Marusic, I. & Franklin, A. M.
741 Dazzled by shine: gloss as an antipredator strategy in fast moving prey. *Behav Ecol* **34**,
742 862–871 (2023).
- 743 85. Franklin, A. M., Brown, M. R. & Willmott, N. J. Glossiness disrupts predator
744 localisation of moving prey. *Current Biology* **34**, R1131–R1132 (2024).
- 745 86. Falk, J. J., Webster, M. S. & Rubenstein, D. R. Male-like ornamentation in female
746 hummingbirds results from social harassment rather than sexual selection. *Current*
747 *Biology* **31**, 4381–4387.e6 (2021).

- 748 87. Wyatt, T. D. *Pheromones and Animal Behavior*. (Cambridge University Press,
749 Cambridge, UK, 2014). doi:10.1017/CBO9781139030748.
- 750 88. Johansson, B. G. & Jones, T. M. The role of chemical communication in mate choice.
751 *Biol Rev* **82**, 265–289 (2007).
- 752 89. Harari, A. R., Zahavi, T. & Thiéry, D. Fitness cost of pheromone production in
753 signaling female moths. *Evolution* **65**, 1572–1582 (2011).
- 754 90. Ah-King, M. The history of sexual selection research provides insights as to why
755 females are still understudied. *Nat Commun* **13**, 6976 (2022).
- 756 91. Ah-King, M. *The Female Turn*. (Springer Nature Singapore, Singapore, 2022).
757 doi:10.1007/978-981-19-7161-7.
- 758 92. Pollo, P. & Kasumovic, M. M. Let's talk about sex roles: what affects perceptions of
759 sex differences in animal behaviour? *Anim Behav* **183**, 1–12 (2022).
- 760 93. Pollo, P. *et al.* Pre-registration for a methodological evaluation and a meta-meta-
761 analysis of sexual signals. Preprint at <https://doi.org/10.17605/OSF.IO/HR2YK> (2024).
- 762 94. Pollo, P. *et al.* Reliability of meta-analyses in ecology and evolution: (mostly) good
763 news from a case study on sexual signals. *Proc R Soc B Biol Sci* (*in press*).
- 764 95. Nakagawa, S. *et al.* Method Reporting with Initials for Transparency (MeRIT)
765 promotes more granularity and accountability for author contributions. *Nat Commun*
766 **14**, 1788 (2023).
- 767 96. McNutt, M. K. *et al.* Transparency in authors' contributions and responsibilities to
768 promote integrity in scientific publication. *Proc Natl Acad Sci U S A* **115**, 2557–2560
769 (2018).
- 770 97. McCullough, E. L., Miller, C. W. & Emlen, D. J. Why sexually selected weapons are
771 not ornaments. *Trends Ecol Evol* **2135**, 1–10 (2016).

- 772 98. Postma, E. & Gienapp, P. Origin-related differences in plumage coloration within an
773 island population of great tits (*Parus major*). *Can J Zool* **87**, 1–7 (2009).
- 774 99. Gil, D. & Slater, P. J. B. Multiple song repertoire characteristics in the willow warbler
775 (*Phylloscopus trochilus*): correlations with female choice and offspring viability.
776 *Behav Ecol Sociobiol* **47**, 319–326 (2000).
- 777 100. Howard, R. D. The influence of sexual selection and interspecific competition on
778 mockingbird song (*Mimus polyglottos*). *Evolution* **28**, 428–438 (1974).
- 779 101. Horn, A. G., Dickinson, T. E. & Falls, J. B. Male quality and song repertoires in
780 western meadowlarks (*Sturnella neglecta*). *Can J Zool* **71**, 1059–1061 (1993).
- 781 102. Ferns, P. N. & Hinsley, S. A. Carotenoid plumage hue and chroma signal different
782 aspects of individual and habitat quality in tits. *Ibis* **150**, 152–159 (2008).
- 783 103. Searcy, W. A. Song repertoire size and female preferences in song sparrows. *Behav*
784 *Ecol Sociobiol* **14**, 281–286 (1984).
- 785 104. Forstmeier, W., Kempenaers, B., Meyer, A. & Leisler, B. A novel song parameter
786 correlates with extra-pair paternity and reflects male longevity. *Proc R Soc B Biol Sci*
787 **269**, 1479–1485 (2002).
- 788 105. Hiebert, S. M., Stoddard, P. K. & Arcese, P. Repertoire size, territory acquisition and
789 reproductive success in the song sparrow. *Anim Behav* **37**, 266–273 (1989).
- 790 106. Lampe, H. M. & Espmark, Y. O. Mate choice in pied flycatchers *Ficedula hypoleuca*:
791 can females use song to find high-quality males and territories? *Ibis* **145**, E24–E33
792 (2002).
- 793 107. Bouwman, K. M., van Dijk, R. E., Wijmenga, J. J. & Komdeur, J. Older male reed
794 buntings are more successful at gaining extrapair fertilizations. *Anim Behav* **73**, 15–27
795 (2007).

- 796 108. Hansen, A. J. & Rohwer, S. Coverable badges and resource defence in birds. *Anim*
797 *Behav* **34**, 69–76 (1986).
- 798 109. Røskoft, E. & Rohwer, S. An experimental study of the function of the red epaulettes
799 and the black body colour of male red-winged blackbirds. *Anim Behav* **35**, 1070–1077
800 (1987).
- 801 110. Yasukawa, K., Butler, L. K. & Enstrom, D. A. Intersexual and intrasexual
802 consequences of epaulet colour in male red-winged blackbirds: an experimental
803 approach. *Anim Behav* **77**, 531–540 (2009).
- 804 111. Aweida, M. K. Repertoires, territory size and mate attraction in western meadowlarks.
805 *Condor* **97**, 1080–1083 (1995).
- 806 112. Mora, A. R., Meniri, M., Glauser, G., Vallat, A. & Helfenstein, F. Badge size reflects
807 sperm oxidative status within social groups in the house sparrow *Passer domesticus*.
808 *Front Ecol Evol* **4**, 1–10 (2016).
- 809 113. Garamszegi, L. Z., Heylen, D., Møller, A. P., Eens, M. & De Lope, F. Age-dependent
810 health status and song characteristics in the barn swallow. *Behav Ecol* **16**, 580–591
811 (2005).
- 812 114. Balsby, T. J. S. Song activity and variability in relation to male quality and female
813 choice in whitethroats *Sylvia communis*. *J Avian Biol* **31**, 56–62 (2000).
- 814 115. Eens, M., Pinxten, R. & Verheyen, R. F. Male song as a cue for mate choice in the
815 European starling. *Behaviour* **116**, 210–238 (1991).
- 816 116. Dreiss, A. *et al.* Sex ratio and male sexual characters in a population of blue tits, *Parus*
817 *caeruleus*. *Behav Ecol* **17**, 13–19 (2006).
- 818 117. Foerster, K., Poesel, A., Kunc, H. & Kempenaers, B. The natural plasma testosterone
819 profile of male blue tits during the breeding season and its relation to song output. *J*
820 *Avian Biol* **33**, 269–275 (2002).

- 821 118. Poesel, A., Foerster, K. & Kempenaers, B. The dawn song of the blue tit *Parus*
822 *caeruleus* and its role in sexual selection. *Ethology* **107**, 521–531 (2001).
- 823 119. Doutrelant, C., Blondel, J., Perret, P. & Lambrechts, M. M. Blue tit song repertoire
824 size, male quality and interspecific. *J Avian Biol* **31**, 360–366 (2000).
- 825 120. Piersma, T. *et al.* Breeding plumage honestly signals likelihood of tapeworm
826 infestation in females of a long-distance migrating shorebird, the bar-tailed godwit.
827 *Zoology* **104**, 41–48 (2001).
- 828 121. Conner, R. N., Anderson, M. E. & Dickson, J. G. Relationships among territory size,
829 habitat, song, and nesting success of northern cardinals. *Auk* **103**, 23–31 (1986).
- 830 122. Bijnens, L. Blue tit *parus caeruleus* song in relation to survival, reproduction and
831 biometry. *Bird Study* **35**, 61–67 (1988).
- 832 123. Freeman-Gallant, C. R. *et al.* Oxidative damage to DNA related to survivorship and
833 carotenoid-based sexual ornamentation in the common yellowthroat. *Biol Lett* **7**, 429–
834 432 (2011).
- 835 124. Freeman-Gallant, C. R. *et al.* Sexual selection, multiple male ornaments, and age- and
836 condition-dependent signaling in the common yellowthroat. *Evolution* **64**, 1007–1017
837 (2010).
- 838 125. Byers, B. E. Extrapair paternity in chestnut-sided warblers is correlated with consistent
839 vocal performance. *Behav Ecol* **18**, 130–136 (2007).
- 840 126. Rehsteiner, U., Geisser, H. & Reyer, H. U. Singing and mating success in water pipits:
841 one specific song element makes all the difference. *Anim Behav* **55**, 1471–1481
842 (1998).
- 843 127. Marshall, R. C., Buchanan, K. L. & Catchpole, C. K. Song and female choice for
844 extrapair copulations in the sedge warbler, *Acrocephalus schoenobaenus*. *Anim Behav*
845 **73**, 629–635 (2007).

- 846 128. Buchanan, K. L. & Catchpole, C. K. Female choice in the sedge warbler, *Acrocephalus*
847 *schoenobaenus*: multiple cues from song and territory quality. *Proc R Soc B Biol Sci*
848 **264**, 521–526 (1997).
- 849 129. Bell, B. D., Borowiec, M., Lontkowski, J. & Pledger, S. Short records of marsh
850 warbler (*Acrocephalus palustris*) song provide indices that correlate with nesting
851 success. *J Ornithol* **145**, 8–15 (2004).
- 852 130. Hadfield, J. D. *et al.* Direct versus indirect sexual selection: Genetic basis of colour,
853 size and recruitment in a wild bird. *Proc R Soc B Biol Sci* **273**, 1347–1353 (2006).
- 854 131. Catchpole, C. K. Song repertoires and reproductive success in the great reed warbler
855 *Acrocephalus arundinaceus*. *Behav Ecol Sociobiol* **19**, 439–445 (1986).
- 856 132. Zirpoli, J. A., Black, J. M. & Gabriel, P. O. Parasites and plumage in Steller's jays: an
857 experimental field test of the parasite-mediated handicap hypothesis. *Ethol Ecol Evol*
858 **25**, 103–116 (2013).
- 859 133. Senar, J. C., Figuerola, J. & Pascual, J. Brighter yellow blue tits make better parents.
860 *Proc R Soc B Biol Sci* **269**, 257–261 (2002).
- 861 134. Zuk, M., Kim, T., Robinson, S. I. & Johnsen, T. S. Parasites influence social rank and
862 morphology, but not mate choice, in female red junglefowl, *Gallus gallus*. *Anim Behav*
863 **56**, 493–499 (1998).
- 864 135. Grindstaff, J. L., Lovern, M. B., Burtka, J. L. & Hallmark-Sharber, A. Structural
865 coloration signals condition, parental investment, and circulating hormone levels in
866 Eastern bluebirds (*Sialia sialis*). *J Comp Physiol A* **198**, 625–637 (2012).
- 867 136. Setchel, J. M. & Wickings, E. J. Sexual swelling in mandrills (*Mandrillus sphinx*): a
868 test of the reliable indicator hypothesis. *Behav Ecol* **15**, 438–445 (2004).

- 869 137. Rigai, L., Higham, J. P., Lee, P. C., Blin, A. & Garcia, C. Multimodal sexual
870 signaling and mating behavior in olive baboons (*Papio anubis*). *Am J Primatol* **75**,
871 774–787 (2013).
- 872 138. Möhle, U., Heistermann, M., Dittami, J., Reinberg, V. & Hodges, J. K. Patterns of
873 anogenital swelling size and their endocrine correlates during ovulatory cycles and
874 early pregnancy in free-ranging barbary macaques (*Macaca sylvanus*) of Gibraltar. *Am*
875 *J Primatol* **66**, 351–368 (2005).
- 876 139. Huchard, E. *et al.* Can fertility signals lead to quality signals? Insights from the
877 evolution of primate sexual swellings. *Proc R Soc B Biol Sci* **276**, 1889–1897 (2009).
- 878 140. Brenowitz, E. A., Nalls, B., Wingfield, J. C. & Kroodsma, D. E. Seasonal changes in
879 avian song nuclei without seasonal changes in song repertoire. *J Neurosci* **11**, 1367–
880 1374 (1991).
- 881 141. Airey, D. C., Buchanan, K. L., Szekely, T., Catchpole, C. K. & DeVoogd, T. J. Song,
882 sexual selection, and a song control nucleus (HVC) in the brains of European sedge
883 warblers. *J Neurobiol* **44**, 1–6 (2000).
- 884 142. Brenowitz, E. A., Lent, K. & Kroodsma, D. E. Brain space for learned song in birds
885 develops independently of song learning. *J Neurosci* **15**, 6281–6286 (1995).
- 886 143. Molnár, O., Bajer, K., Török, J. & Herczeg, G. Individual quality and nuptial throat
887 colour in male European green lizards. *J Zool* **287**, 233–239 (2012).
- 888 144. Doucet, S. M. & Montgomerie, R. Multiple sexual ornaments in satin bowerbirds:
889 ultraviolet plumage and bowers signal different aspects of male quality. *Behav Ecol* **14**,
890 503–509 (2003).
- 891 145. Peters, A., Kurvers, R. H. J. M., Roberts, M. L. & Delhey, K. No evidence for general
892 condition-dependence of structural plumage colour in blue tits: an experiment. *J Evol*
893 *Biol* **24**, 976–987 (2011).

- 894 146. Roberts, M. L., Ras, E. & Peters, A. Testosterone increases UV reflectance of sexually
895 selected crown plumage in male blue tits. *Behav Ecol* **20**, 535–541 (2009).
- 896 147. Peters, A., Delhey, K., Goymann, W. & Kempenaers, B. Age-dependent association
897 between testosterone and crown UV coloration in male blue tits (*Parus caeruleus*).
898 *Behav Ecol Sociobiol* **59**, 666–673 (2006).
- 899 148. Vinkler, M., Schnitzer, J., Munclinger, P. & Albrecht, T. Phytohaemagglutinin skin-
900 swelling test in scarlet rosefinch males: low-quality birds respond more strongly. *Anim*
901 *Behav* **83**, 17–23 (2012).
- 902 149. Merilä, J., Sheldon, B. C. & Lindström, K. Plumage brightness in relation to
903 haematozoan infections in the greenfinch *Carduelis chloris*: bright males are a good
904 bet. *Ecoscience* **6**, 12–18 (1999).
- 905 150. Martínez-Padilla, J., Mougeot, F., Pérez-Rodríguez, L. & Bortolotti, G. R. Nematode
906 parasites reduce carotenoid-based signalling in male red grouse. *Biol Lett* **3**, 161–164
907 (2007).
- 908 151. Chui, C. K. S., McGraw, K. J. & Doucet, S. M. Carotenoid-based plumage coloration
909 in golden-crowned kinglets *Regulus satrapa*: pigment characterization and
910 relationships with migratory timing and condition. *J Avian Biol* **42**, 309–322 (2011).
- 911 152. Biard, C., Saulnier, N., Gaillard, M. & Moreau, J. Carotenoid-based bill colour is an
912 integrative signal of multiple parasite infection in blackbird. *Naturwissenschaften* **97**,
913 987–995 (2010).
- 914 153. Fenoglio, S., Cucco, M., Fracchia, L., Martinotti, M. G. & Malacarne, G. Shield
915 colours of the moorhen are differently related to bacterial presence and health
916 parameters. *Ethol Ecol Evol* **16**, 171–180 (2004).

- 917 154. Rémy, A., Grégoire, A., Perret, P. & Doutrelant, C. Mediating male-male interactions:
918 the role of the UV blue crest coloration in blue tits. *Behav Ecol Sociobiol* **64**, 1839–
919 1847 (2010).
- 920 155. Korsten, P., Dijkstra, T. H. & Komdeur, J. Is UV signalling involved in male-male
921 territorial conflict in the blue tit (*Cyanistes caeruleus*)? A new experimental approach.
922 *Behaviour* **144**, 447–470 (2007).
- 923 156. Emery, M. A. & Whitten, P. L. Size of sexual swellings reflects ovarian function in
924 chimpanzees (*Pan troglodytes*). *Behav Ecol Sociobiol* **54**, 340–351 (2003).
- 925 157. Peters, A., Delhey, K., Johnsen, A. & Kempenaers, B. The condition-dependent
926 development of carotenoid-based and structural plumage in nestling blue tits: Males
927 and females differ. *Am Nat* **169**, (2007).
- 928 158. Hadfield, J. D. & Owens, I. P. F. Strong environmental determination of a carotenoid-
929 based plumage trait is not mediated by carotenoid availability. *J Evol Biol* **19**, 1104–
930 1114 (2006).
- 931 159. Dunn, P. O., Garvin, J. C., Whittingham, L. A., Freeman-Gallant, C. R. & Hasselquist,
932 D. Carotenoid and melanin-based ornaments signal similar aspects of male quality in
933 two populations of the common yellowthroat. *Funct Ecol* **24**, 149–158 (2010).
- 934 160. Figuerola, J., Muñoz, E., Gutiérrez, R. & Ferrer, D. Blood parasites, leucocytes and
935 plumage brightness in the ciril bunting, *Emberiza cirrus*. *Funct Ecol* **13**, 594–601
936 (1999).
- 937 161. Biard, C., Surai, P. F. & Møller, A. P. An analysis of pre- and post-hatching maternal
938 effects mediated by carotenoids in the blue tit. *J Evol Biol* **20**, 326–339 (2007).
- 939 162. Isaksson, C., McLaughlin, P., Monaghan, P. & Andersson, S. Carotenoid pigmentation
940 does not reflect total non-enzymatic antioxidant activity in plasma of adult and nestling
941 great tits, *Parus major*. *Funct Ecol* **21**, 1123–1129 (2007).

- 942 163. Eckert, C. G. & Weatherhead, P. J. Male characteristics, parental quality and the study
943 of mate choice in the red-winged blackbird (*Agelaius phoeniceus*). *Behav Ecol*
944 *Sociobiol* **20**, 35–42 (1987).
- 945 164. Hõrak, P., Sild, E., Soomets, U., Sepp, T. & Kilk, K. Oxidative stress and information
946 content of black and yellow plumage coloration: an experiment with greenfinches. *J*
947 *Exp Biol* **213**, 2225–2233 (2010).
- 948 165. Mougeot, F. *et al.* Oxidative stress and the effect of parasites on a carotenoid-based
949 ornament. *J Exp Biol* **213**, 400–407 (2010).
- 950 166. Pérez-Rodríguez, L. & Viñuela, J. Carotenoid-based bill and eye ring coloration as
951 honest signals of condition: an experimental test in the red-legged partridge (*Alectoris*
952 *rufa*). *Naturwissenschaften* **95**, 821–830 (2008).
- 953 167. Keyser, A. J. & Hill, G. E. Structurally based plumage coloration is an honest signal of
954 quality in male blue grosbeaks. *Behav Ecol* **11**, 202–209 (2000).
- 955 168. Buchanan, K. L. & Catchpole, C. K. Extra-pair paternity in the socially monogamous
956 sedge warbler *Acrocephalus schoenobaenus* as revealed by multilocus DNA
957 fingerprinting. *Ibis* **142**, 12–20 (2000).
- 958 169. Veiga, J. P. Badge size, phenotypic quality, and reproductive success in the house
959 sparrow: a study on honest advertisement. *Evolution* **47**, 1161–1170 (1993).
- 960 170. Kose, M., Mänd, R. & Møller, A. P. Sexual selection for white tail spots in the barn
961 swallow in relation to habitat choice by feather lice. *Anim Behav* **58**, 1201–1205
962 (1999).
- 963 171. Kose, M. & Møller, A. P. Sexual selection, feather breakage and parasites: the
964 importance of white spots in the tail of the barn swallow (*Hirundo rustica*). *Behav*
965 *Ecol Sociobiol* **45**, 430–436 (1999).

- 966 172. Liker, A. & Barta, Z. Male badge size predicts dominance against females in house
967 sparrows. *Condor* **103**, 151–157 (2001).
- 968 173. Solberg, E. J. & Ringsby, T. H. Does male badge size signal status in small island
969 populations of house sparrows, *Passer domesticus*? *Ethology* **103**, 177–186 (1997).
- 970 174. Møller, A. P. Variation in badge size in male house sparrows *Passer domesticus*:
971 evidence for status signalling. *Anim Behav* **35**, 1637–1644 (1987).
- 972 175. Henderson, L. J., Heidinger, B. J., Evans, N. P. & Arnold, K. E. Ultraviolet crown
973 coloration in female blue tits predicts reproductive success and baseline corticosterone.
974 *Behav Ecol* **24**, 1299–1305 (2013).
- 975 176. del Cerro, S. *et al.* Carotenoid-based plumage colouration is associated with blood
976 parasite richness and stress protein levels in blue tits (*Cyanistes caeruleus*). *Oecologia*
977 **162**, 825–835 (2010).
- 978 177. Garamszegi, L. Z. *et al.* The design of complex sexual traits in male barn swallows:
979 associations between signal attributes. *J Evol Biol* **19**, 2052–2066 (2006).
- 980 178. Edler, A. U. & Friedl, T. W. P. Individual quality and carotenoid-based plumage
981 ornaments in male red bishops (*Euplectes orix*): plumage is not all that counts. *Biol J*
982 *Linn Soc* **99**, 384–397 (2010).
- 983 179. Maney, D. L., Davis, A. K., Goode, C. T., Reid, A. & Showalter, C. Carotenoid-based
984 plumage coloration predicts leukocyte parameters during the breeding season in
985 northern cardinals (*Cardinalis cardinalis*). *Ethology* **114**, 369–380 (2008).
- 986 180. Dufva, R. & Allander, K. Intraspecific variation in plumage coloration reflects immune
987 response in great tit (*Parus major*) males. *Funct Ecol* **9**, 785 (1995).
- 988 181. Wiehn, J., Korpimäki, E., Bildstein, K. L. & Sorjonen, J. Mate choice and reproductive
989 success in the American kestrel: a role for blood parasites? *Ethology* **103**, 304–317
990 (1997).

- 991 182. Thompson, C. W., Hillgarth, N., Leu, M. & McClure, H. E. High parasite load in house
992 finches (*Carpodacus mexicanus*) is correlated with reduced expression of a sexually
993 selected trait. *Am Nat* **149**, 270–294 (1997).
- 994 183. Seutin, G. Plumage redness in redpoll finches does not reflect hemoparasitic infection.
995 *Oikos* **70**, 280 (1994).
- 996 184. Weatherhead, P. J., Metz, K. J., Bennett, G. F. & Irwin, R. E. Parasite faunas,
997 testosterone and secondary sexual traits in male red-winged blackbirds. *Behav Ecol*
998 *Sociobiol* **33**, 13–23 (1993).
- 999 185. Vergara, P., Fargallo, J. A., Martínez-Padilla, J. & Lemus, J. A. Inter-annual variation
1000 and information content of melanin-based coloration in female Eurasian kestrels. *Biol*
1001 *J Linn Soc* **97**, 781–790 (2009).
- 1002 186. Tella, J. L., Forero, M. G., Donazar, J. A. & Hiraldo, F. Is the expressin of male traits
1003 in female lesser kestrels related to sexual selection. *Ethology* **103**, 72–81 (1997).
- 1004 187. Møller, A. P. Female preference for apparently symmetrical male sexual ornaments in
1005 the barn swallow *Hirundo rustica*. *Behav Ecol Sociobiol* **32**, 371–376 (1993).
- 1006 188. Brommer, J. E., Ahola, K. & Karstinen, T. The colour of fitness: plumage coloration
1007 and lifetime reproductive success in the tawny owl. *Proc R Soc B Biol Sci* **272**, 935–
1008 940 (2005).
- 1009 189. Horne, T. J. Evolution of females choice in the bank vole. (University of Jyväskylä,
1010 1998).
- 1011 190. De Lope, F. & Møller, A. P. Female reproductive effort depends on the degree of
1012 ornamentation of their mates. *Evolution* **47**, 1152–1160 (1993).
- 1013 191. Møller, A. P. Sexual selection in the barn swallow *Hirundo rustica*. III. Female tail
1014 ornaments. *Evolution* **47**, 417 (1993).

- 1015 192. Welch, A. M., Semlitsch, R. D. & Gerhardt, H. C. Call duration as an indicator of
1016 genetic quality in male gray tree frogs. *Science* **280**, 1928–1930 (1998).
- 1017 193. Alatalo, R. V., Kotiaho, J., Mappes, J. & Parri, S. Mate choice for offspring
1018 performance: major benefits or minor costs? *Proc R Soc B Biol Sci* **265**, 2297–2301
1019 (1998).
- 1020 194. Hoikkala, A. & Suvanto, L. Male courtship song frequency as an indicator of male
1021 mating success in *Drosophila montana*. *J Insect Behav* **12**, 599–609 (1999).
- 1022 195. Hasselquist, D., Bensch, S. & von Schantz, T. Correlation between male song
1023 repertoire, extra-pair paternity and offspring survival in the great reed warbler. *Nature*
1024 **381**, 229–232 (1996).
- 1025 196. Freeman-Gallant, C. R., Schneider, R. L., Taff, C. C., Dunn, P. O. & Whittingham, L.
1026 A. Contrasting patterns of selection on the size and coloration of a female plumage
1027 ornament in common yellowthroats. *J Evol Biol* **27**, 982–991 (2014).
- 1028 197. Gladbach, A., Gladbach, D. J., Kempenaers, B. & Quillfeldt, P. Female-specific
1029 colouration, carotenoids and reproductive investment in a dichromatic species, the
1030 upland goose *Chloephaga picta leucoptera*. *Behav Ecol Sociobiol* **64**, 1779–1789
1031 (2010).
- 1032 198. Quinard, A., Cézilly, F., Motreuil, S., Rossi, J. M. & Biard, C. Reduced sexual
1033 dichromatism, mutual ornamentation, and individual quality in the monogamous
1034 Zenaida dove *Zenaida aurita*. *J Avian Biol* **48**, 489–501 (2017).
- 1035 199. Simons, M. J. P. *et al.* Bill redness is positively associated with reproduction and
1036 survival in male and female zebra finches. *PLoS One* **7**, (2012).
- 1037 200. Komdeur, J., Oorebeek, M., Van Overveld, T. & Cuthill, I. C. Mutual ornamentation,
1038 age, and reproductive performance in the European starling. *Behav Ecol* **16**, 805–817
1039 (2005).

- 1040 201. Daunt, F., Monaghan, P., Wanless, S. & Harris, M. P. Sexual ornament size and
1041 breeding performance in female and male European shags *Phalacrocorax aristotelis*.
1042 *Ibis* **145**, 54–60 (2003).
- 1043 202. Morrison, A., Flood, N. J. & Reudink, M. W. Reproductive correlates of plumage
1044 coloration of female mountain bluebirds. *J Field Ornithol* **85**, 168–179 (2014).
- 1045 203. Mänd, R., Tilgar, V. & Møller, A. P. Negative relationship between plumage colour and
1046 breeding output in female great tits, *Parus major*. *Evol Ecol Res* **7**, 1013–1023 (2005).
- 1047 204. Muma, K. E. & Weatherhead, P. J. Male traits expressed in females: direct or indirect
1048 sexual selection? *Behav Ecol Sociobiol* **25**, 23–31 (1989).
- 1049 205. Beck, M. L., Hopkins, W. A. & Hawley, D. M. Relationships among plumage
1050 coloration, blood selenium concentrations and immune responses of adult and nestling
1051 tree swallows. *J Exp Biol* **218**, 3415–3424 (2015).
- 1052 206. Potti, J. & Merino, S. Decreased levels of blood trypanosome infection correlate with
1053 female expression of a male secondary sexual trait: implications for sexual selection.
1054 *Proc R Soc B Biol Sci* **263**, 1199–1204 (1996).
- 1055 207. Bentz, A. B. & Siefferman, L. Age-dependent relationships between coloration and
1056 reproduction in a species exhibiting delayed plumage maturation in females. *J Avian*
1057 *Biol* **44**, 080–088 (2013).
- 1058 208. Osmond, M. M. *et al.* Relationships between carotenoid-based female plumage and
1059 age, reproduction, and mate colour in the American redstart (*Setophaga ruticilla*). *Can*
1060 *J Zool* **91**, 589–595 (2013).
- 1061 209. Bulluck, L. P. *et al.* Feather carotenoid content is correlated with reproductive success
1062 and provisioning rate in female prothonotary warblers. *Auk* **134**, 229–239 (2017).
- 1063 210. Doutrelant, C. *et al.* Female coloration indicates female reproductive capacity in blue
1064 tits. *J Evol Biol* **21**, 226–233 (2008).

- 1065 211. Cuervo, J. J., Møller, A. P. & De Lope, F. Experimental manipulation of tail length in
1066 female barn swallows (*Hirundo rustica*) affects their future reproductive success.
1067 *Behav Ecol* **14**, 451–456 (2003).
- 1068 212. Silva, N., Avilés, J. M., Danchin, E. & Parejo, D. Informative content of multiple
1069 plumage-coloured traits in female and male European rollers. *Behav Ecol Sociobiol* **62**,
1070 1969–1979 (2008).
- 1071 213. Viblanc, V. A. *et al.* Mutually honest? Physiological ‘qualities’ signalled by colour
1072 ornaments in monomorphic king penguins. *Biol J Linn Soc* **118**, 200–214 (2016).
- 1073 214. van Dijk, R. E., Robles, R., Groothuis, T. G. G., de Vries, B. & Eising, C. M.
1074 Reproductive effort of both male and female bar-throated apalis *Apalis thoracica* is
1075 predicted by ornamentation of self and mate. *Ibis* **157**, 731–742 (2015).
- 1076 215. Lindström, K. M., Hasselquist, D. & Wikelski, M. House sparrows (*Passer*
1077 *domesticus*) adjust their social status position to their physiological costs. *Horm Behav*
1078 **48**, 311–320 (2005).
- 1079 216. Hein, W. K., Westneat, D. F. & Poston, J. P. Sex of opponent influences response to a
1080 potential status signal in house sparrows. *Anim Behav* **65**, 1211–1221 (2003).
- 1081 217. Riters, L. V., Teague, D. P. & Schroeder, M. B. Social status interacts with badge size
1082 and neuroendocrine physiology to influence sexual behavior in male house sparrows
1083 (*Passer domesticus*). *Brain Behav Evol* **63**, 141–150 (2004).
- 1084 218. Gonzalez, G., Sorci, G., Smith, L. C. & De Lope, F. Social control and physiological
1085 cost of cheating in status signalling male house sparrows (*Passer domesticus*).
1086 *Ethology* **108**, 289–302 (2002).
- 1087 219. Bókony, V., Lendvai, Á. Z. & Liker, A. Multiple cues in status signalling: the role of
1088 wingbars in aggressive interactions of male house sparrows. *Ethology* **112**, 947–954
1089 (2006).

- 1090 220. Delhey, K. & Kempenaers, B. Age differences in blue tit *Parus caeruleus* plumage
1091 colour: within-individual changes or colour-biased survival? *J Avian Biol* **37**, 339–348
1092 (2006).
- 1093 221. Surmacki, A., Stępniewski, J. & Stępniewska, M. Juvenile sexual dimorphism,
1094 dichromatism and condition-dependent signaling in a bird species with early pair
1095 bonds. *J Ornithol* **156**, 65–73 (2015).
- 1096 222. Hidalgo-Garcia, S. The carotenoid-based plumage coloration of adult blue tits
1097 *Cyanistes caeruleus* correlates with the health status of their brood. *Ibis* **148**, 727–734
1098 (2006).
- 1099 223. Mougeot, F., Redpath, S. M. & Leckie, F. Ultra-violet reflectance of male and female
1100 red grouse, *Lagopus lagopus scoticus*: sexual ornaments reflect nematode parasite
1101 intensity. *J Avian Biol* **36**, 203–209 (2005).
- 1102 224. Saino, N. *et al.* Viability is associated with melanin-based coloration in the barn
1103 swallow (*Hirundo rustica*). *PLoS One* **8**, e60426 (2013).
- 1104 225. Vortman, Y., Lotem, A., Dor, R., Lovette, I. J. & Safran, R. J. The sexual signals of the
1105 East-Mediterranean barn swallow: a different swallow tale. *Behav Ecol* **22**, 1344–1352
1106 (2011).
- 1107 226. Faivre, B., Grégoire, A., Prévault, M., Cézilly, F. & Sorci, G. Immune activation rapidly
1108 mirrored in a secondary sexual trait. *Science* **300**, 103–103 (2003).
- 1109 227. Grunst, A. S., Rotenberry, J. T. & Grunst, M. L. Age-dependent relationships between
1110 multiple sexual pigments and condition in males and females. *Behav Ecol* **25**, 276–287
1111 (2014).
- 1112 228. Kraaijeveld, K., Gregurke, J., Hall, C., Komdeur, J. & Mulder, R. A. Mutual
1113 ornamentation, sexual selection, and social dominance in the black swan. *Behav Ecol*
1114 **15**, 380–389 (2004).

- 1115 229. Tschirren, B., Fitze, P. S. & Richner, H. Proximate mechanisms of variation in the
1116 carotenoid-based plumage coloration of nestling great tits (*Parus major* L.). *J Evol*
1117 *Biol* **16**, 91–100 (2003).
- 1118 230. Figuerola, J., Domènech, J. & Senar, J. C. Plumage colour is related to ectosymbiont
1119 load during moult in the serin, *Serinus serinus*: an experimental study. *Anim Behav* **65**,
1120 551–557 (2003).
- 1121 231. De Kogel, C. H. & Prijs, H. J. Effects of brood size manipulations on sexual
1122 attractiveness of offspring in the zebra finch. *Anim Behav* **51**, 699–708 (1996).
- 1123 232. McGraw, K. J. & Hill, G. E. Differential effects of endoparasitism on the expression of
1124 carotenoid- and melanin-based ornamental coloration. *Proc R Soc B Biol Sci* **267**,
1125 1525–1531 (2000).
- 1126 233. Griffith, S. C., Owens, I. P. F. & Burke, T. Female choice and annual reproductive
1127 success favour less-ornamented male house sparrows. *Proc R Soc B Biol Sci* **266**, 765–
1128 770 (1999).
- 1129 234. McGraw, K. J., Mackillop, E. A., Dale, J. & Hauber, M. E. Different colors reveal
1130 different information: how nutritional stress affects the expression of melanin- and
1131 structurally based ornamental plumage. *J Exp Biol* **205**, 3747–3755 (2002).
- 1132 235. Fitze, P. S. & Richner, H. Differential effects of a parasite on ornamental structures
1133 based on melanins and carotenoids. *Behav Ecol* **13**, 401–407 (2002).
- 1134 236. Johnsen, A., Delhey, K., Schlicht, E., Peters, A. & Kempenaers, B. Male sexual
1135 attractiveness and parental effort in blue tits: a test of the differential allocation
1136 hypothesis. *Anim Behav* **70**, 877–888 (2005).
- 1137 237. Maguire, S. E. & Safran, R. J. Morphological and genetic predictors of parental care in
1138 the North American barn swallow *Hirundo rustica erythrogaster*. *J Avian Biol* **41**, 74–
1139 82 (2010).

- 1140 238. Sundberg, J. & Larsson, C. Male coloration as an indicator of parental quality in the
1141 yellowhammer, *Emberiza citrinella*. *Animal Behaviour* vol. 48 885–892 Preprint at
1142 <https://doi.org/10.1006/anbe.1994.1313> (1994).
- 1143 239. Lozano, G. A. & Lemon, R. E. Male plumage, paternal care and reproductive success
1144 in yellow warblers, *Dendroica petechia*. *Anim Behav* **51**, 265–272 (1996).
- 1145 240. Studd, M. V. & Robertson, R. J. Sexual selection and variation in reproductive strategy
1146 in male yellow warblers (*Dendroica petechia*). *Behav Ecol Sociobiol* **17**, 101–109
1147 (1985).
- 1148 241. Møller, A. P. Sexual selection in the barn swallow (*Hirundo rustica*). IV. Patterns of
1149 fluctuating asymmetry and selection against asymmetry. *Evolution* **48**, 658 (1994).
- 1150 242. Jawor, J. M., Gray, N., Beall, S. M. & Breitwisch, R. Multiple ornaments correlate
1151 with aspects of condition and behaviour in female northern cardinals, *Cardinalis*
1152 *cardinalis*. *Anim Behav* **67**, 875–882 (2004).
- 1153 243. Linville, S. U., Breitwisch, R. & Schilling, A. J. Plumage brightness as an indicator of
1154 parental care in northern cardinals. *Anim Behav* **55**, 119–127 (1998).
- 1155 244. Hōrak, P. *et al.* How coccidian parasites affect health and appearance of greenfinches.
1156 *J Anim Ecol* **73**, 935–947 (2004).
- 1157 245. Møller, A. P. & Tegelström, H. Extra-pair paternity and tail ornamentation in the barn
1158 swallow *Hirundo rustica*. *Behav Ecol Sociobiol* **41**, 353–360 (1997).
- 1159 246. Møller, A. P. Male ornament size as a reliable cue to enhanced offspring viability in the
1160 barn swallow. *Proc Natl Acad Sci U S A* **91**, 6929–6932 (1994).
- 1161 247. Møller, A. P. Phenotype-dependent arrival time and its consequences in a migratory
1162 bird. *Behav Ecol Sociobiol* **35**, 115–122 (1994).
- 1163 248. Møller, A. P. Symmetrical male sexual ornaments, paternal care, and offspring quality.
1164 *Behav Ecol* **5**, 188–194 (1994).

- 1165 249. Burley, N. & Coopersmith, C. B. Bill color preferences of zebra finches. *Ethology* **76**,
1166 133–151 (1987).
- 1167 250. Møller, A. P. Female swallow preference for symmetrical male sexual ornaments.
1168 *Nature* **357**, 238–240 (1992).
- 1169 251. Møller, A. P. Sexual selection in the monogamous barn swallow (*Hirundo rustica*). II.
1170 Mechanisms of sexual selection. *J Evol Biol* **5**, 603–624 (1992).
- 1171 252. Møller, A. P. Male tail length and female mate choice in the monogamous swallow
1172 *Hirundo rustica*. *Anim Behav* **39**, 458–465 (1990).
- 1173 253. Rintamäki, P. T., Alatalo, R. V., Höglund, J. & Lundberg, A. Fluctuating asymmetry
1174 and copulation success in lekking black grouse. *Anim Behav* **54**, 265–269 (1997).
- 1175 254. Collins, S. A., Hubbard, C. & Houtman, A. M. Female mate choice in the zebra finch -
1176 the effect of male beak colour and male song. *Behav Ecol Sociobiol* **35**, 21–25 (1994).
- 1177 255. Møller, A. P. Viability costs of male tail ornaments in a swallow. *Nature* **339**, 132–135
1178 (1989).
- 1179 256. Møller, A. P. Natural and sexual selection on a plumage signal of status and on
1180 morphology in house sparrows, *Passer domesticus*. *J Evol Biol* **2**, 125–140 (1989).
- 1181 257. Norris, K. J. Female choice and the evolution of the conspicuous plumage coloration
1182 of monogamous male great tits. *Behav Ecol Sociobiol* **26**, 129–138 (1990).
- 1183 258. Evans, Matthew R. & Hatchwell, B. J. An experimental study of male adornment in the
1184 scarlet-tufted malachite sunbird: I. The role of pectoral tufts in territorial defence.
1185 *Behav Ecol Sociobiol* **29**, 421–427 (1992).
- 1186 259. Saino, N., Bolzern, A. M. & Møller, A. P. Immunocompetence, ornamentation, and
1187 viability of male barn swallows (*Hirundo rustica*). *Proc Natl Acad Sci U S A* **94**, 549–
1188 552 (1997).

- 1189 260. Baeta, R., Faivre, B., Motreuil, S., Gaillard, M. & Moreau, J. Carotenoid trade-off
1190 between parasitic resistance and sexual display: an experimental study in the blackbird
1191 (*Turdus merula*). *Proc R Soc B Biol Sci* **275**, 427–434 (2008).
- 1192 261. Stirnemann, I., Johnston, G., Rich, B., Robertson, J. & Kleindorfer, S.
1193 Phytohaemagglutinin (PHA) response and bill-hue wavelength increase with
1194 carotenoid supplementation in diamond firetails (*Stagonopleura guttata*). *Emu* **109**,
1195 344–351 (2009).
- 1196 262. Hill, G. E., Hood, W. R. & Huggins, K. A multifactorial test of the effects of
1197 carotenoid access, food intake and parasite load on the production of ornamental
1198 feathers and bill coloration in American goldfinches. *J Exp Biol* **212**, 1225–1233
1199 (2009).
- 1200 263. Navara, K. J. & Hill, G. E. Dietary carotenoid pigments and immune function in a
1201 songbird with extensive carotenoid-based plumage coloration. *Behav Ecol* **14**, 909–
1202 916 (2003).
- 1203 264. Peters, A., Delhey, K., Andersson, S., Van Noordwijk, H. & Förschler, M. I. Condition-
1204 dependence of multiple carotenoid-based plumage traits: an experimental study. *Funct*
1205 *Ecol* **22**, 831–839 (2008).
- 1206 265. Karu, U., Saks, L. & Hõrak, P. Carotenoid coloration in greenfinches is individually
1207 consistent irrespective of foraging ability. *Physiol Biochem Zool* **80**, 663–670 (2007).
- 1208 266. Blount, J. D., Metcalfe, N. B., Birkhead, T. R. & Surai, P. F. Carotenoid modulation of
1209 immune function and sexual attractiveness in zebra finches. *Science* **300**, 125–127
1210 (2003).
- 1211 267. Ryan, M. J., Perrill, S. A. & Wilczynski, W. Auditory tuning and call frequency predict
1212 population-based mating preferences in the cricket frog, *Acris crepitans*. *Am Nat* **139**,
1213 1370–1383 (1992).

- 1214 268. McGraw, K. J. & Ardia, D. R. Carotenoids, immunocompetence, and the information
1215 content of sexual colors: an experimental test. *Am Nat* **162**, 704–712 (2003).
- 1216 269. Jensen, H. *et al.* Lifetime reproductive success in relation to morphology in the house
1217 sparrow *Passer domesticus*. *J Anim Ecol* **73**, 599–611 (2004).
- 1218 270. Václav, R. & Hoi, H. Different reproductive tactics in house sparrows signalled by
1219 badge size: is there a benefit to being average? *Ethology* **108**, 569–582 (2002).
- 1220 271. Birkhead, A. T. R. & Fletcher, F. Male phenotype and ejaculate quality in the zebra
1221 finch *Taeniopygia guttata*. *Proc R Soc B Biol Sci* **262**, 329–334 (1995).
- 1222 272. Potti, J. & Montalvo, S. Male arrival and female mate choice in pied flycatchers
1223 *Ficedula hypoleuca* in central Spain. *Ornis Scand* **22**, 45–54 (1991).
- 1224 273. Evans, J. P. Quantitative genetic evidence that males trade attractiveness for ejaculate
1225 quality in guppies. *Proc R Soc B Biol Sci* **277**, 3195–3201 (2010).
- 1226 274. Engen, F. & Folstad, I. Cod courtship song: a song at the expense of dance? *Can J*
1227 *Zool* **77**, 542–550 (1999).
- 1228 275. Peters, A., Denk, A. G., Delhey, K. & Kempenaers, B. Carotenoid-based bill colour as
1229 an indicator of immunocompetence and sperm performance in male mallards. *J Evol*
1230 *Biol* **17**, 1111–1120 (2004).
- 1231 276. Hasselquist, D. Polygyny in great reed warblers: a long-term study of factors
1232 contributing to male fitness. *Ecology* **79**, 2376–2390 (1998).
- 1233 277. Roulin, A., Dijkstra, C., Riols, C. & Ducrest, A. L. Female- and male-specific signals
1234 of quality in the barn owl. *J Evol Biol* **14**, 255–266 (2001).
- 1235 278. Roulin, A., Riols, C., Dijkstra, C. & Ducrest, A. L. Female plumage spottiness signals
1236 parasite resistance in the barn owl (*Tyto alba*). *Behav Ecol* **12**, 103–110 (2001).
- 1237 279. Siefferman, L. & Hill, G. E. Evidence for sexual selection on structural plumage
1238 coloration in female eastern bluebirds (*Sialia sialis*). *Evolution* **59**, 1819–1828 (2005).

- 1239 280. Balenger, S. L., Scott Johnson, L., Brubaker, J. L. & Ostlind, E. Parental effort in
1240 relation to structural plumage coloration in the mountain bluebird (*Sialia currucoides*).
1241 *Ethology* **113**, 838–846 (2007).
- 1242 281. McGregor, P. K., Krebs, J. R. & Perrins, C. M. Song repertoires and lifetime
1243 reproductive success in the great tit (*Parus major*). *Am Nat* **118**, 149–159 (1981).
- 1244 282. Voltura, K. M., Schwagmeyer, P. L. & Mock, D. W. Parental feeding rates in the house
1245 sparrow, *Passer domesticus*: are larger-badged males better fathers? *Ethology* **108**,
1246 1011–1022 (2002).
- 1247 283. Nakagawa, S., Ockendon, N., Gillespie, D. O. S., Hatchwell, B. J. & Burke, T. Does
1248 the badge of status influence parental care and investment in house sparrows? An
1249 experimental test. *Oecologia* **153**, 749–760 (2007).
- 1250 284. Møller, A. P. Parasite load reduces song output in a passerine bird. *Anim Behav* **41**,
1251 723–730 (1991).
- 1252 285. Alonso-Alvarez, C. *et al.* An experimental test of the dose-dependent effect of
1253 carotenoids and immune activation on sexual signals and antioxidant activity. *Am Nat*
1254 **164**, 651–659 (2004).
- 1255 286. Lambrechts, M. & Dhondt, A. A. Male quality, reproduction, and survival in the great
1256 tit (*Parus major*). *Behav Ecol Sociobiol* **19**, 57–63 (1986).
- 1257 287. Møller, A. P. Viability is positively related to degree of ornamentation in male
1258 swallows. *Proc R Soc B Biol Sci* **243**, 145–148 (1991).
- 1259 288. Møller, A. P. & Nielsen, J. T. Differential predation cost of a secondary sexual
1260 character: sparrowhawk predation on barn swallows. *Anim Behav* **54**, 1545–1551
1261 (1997).
- 1262 289. Brown, C. R. & Brown, M. B. Natural selection on tail and bill morphology in barn
1263 swallows *Hirundo rustica* during severe weather. *Ibis* **141**, 652–659 (1999).

- 1264 290. Møller, A. P. & de Lope, F. Differential costs of a secondary sexual character: an
1265 experimental test of the handicap principle. *Evolution* **48**, 1676 (1994).
- 1266 291. Buchanan, K. L. & Catchpole, C. K. Song as an indicator of male parental effort in the
1267 sedge warbler. *Proc R Soc B Biol Sci* **267**, 321–326 (2000).
- 1268 292. Birkhead, T. R., Fletcher, F. & Pellatt, E. J. Sexual selection in the zebra finch
1269 *Taeniopygia guttata*: condition, sex traits and immune capacity. *Behav Ecol Sociobiol*
1270 **44**, 179–191 (1998).
- 1271 293. Adamo, S. A., Kovalko, I., Easy, R. H. & Stoltz, D. A viral aphrodisiac in the cricket
1272 *Gryllus texensis*. *J Exp Biol* **217**, 1970–1976 (2014).
- 1273 294. Smith, M. J. & Roberts, J. D. Call structure may affect male mating success in the
1274 quacking frog *Crinia georgiana* (Anura: Myobatrachidae). *Behav Ecol Sociobiol* **53**,
1275 221–226 (2003).
- 1276 295. Kingma, S. A. *et al.* Sexual selection and the function of a melanin-based plumage
1277 ornament in polygamous penduline tits *Remiz pendulinus*. *Behav Ecol Sociobiol* **62**,
1278 1277–1288 (2008).
- 1279 296. David Ligon, J. & Zwartjes, P. W. Female red junglefowl choose to mate with multiple
1280 males. *Anim Behav* **49**, 127–135 (1995).
- 1281 297. Ligon, J. D. & Zwartjes, P. W. Ornate plumage of male red junglefowl does not
1282 influence mate choice by females. *Anim Behav* **49**, 117–125 (1995).
- 1283 298. Kempenaers, B., Verheyen, G. R. & Dhondt, A. A. Extrapair paternity in the blue tit
1284 (*Parus caeruleus*): female choice, male characteristics, and offspring quality. *Behav*
1285 *Ecol* **8**, 481–492 (1997).
- 1286 299. Leisler, B. Variation in extra-pair paternity in the polygynous great reed warbler
1287 (*Acrocephalus arundinaceus*). *J für Ornithol* **141**, 77 (2000).

- 1288 300. Chappell, M. A., Zuk, M., Johnsen, T. S. & Kwan, T. H. Mate choice and aerobic
1289 capacity in red junglefowl. *Behaviour* **134**, 511–529 (1997).
- 1290 301. Kennedy, C. E. J., Endler, J. A., Poynton, S. L. & McMinn, H. Parasite load predicts
1291 mate choice in guppies. *Behav Ecol Sociobiol* **21**, 291–295 (1987).
- 1292 302. Hall, Z. J., Bertin, M., Bailey, I. E., Meddle, S. L. & Healy, S. D. Neural correlates of
1293 nesting behavior in zebra finches (*Taeniopygia guttata*). *Behav Brain Res* **264**, 26–33
1294 (2014).
- 1295 303. Bernard, D. J., Eens, M. & Ball, G. F. Age- and behavior-related variation in volumes
1296 of song control nuclei in male European starlings. *J Neurobiol* **30**, 329–339 (1996).
- 1297 304. Taylor, M. I., Turner, G. F., Robinson, R. L. & Stauffer, J. R. Sexual selection,
1298 parasites and bower height skew in a bower-building cichlid fish. *Anim Behav* **56**,
1299 379–384 (1998).
- 1300 305. Pruett-jones, S. G., Pruett-jones, M. A. & Jones, H. I. Parasites and sexual selection in
1301 birds of paradise. *Integr Comp Biol* **30**, 287–298 (1990).
- 1302 306. Price, D. K. & Burley, N. T. Constraints on the evolution of attractive traits: selection
1303 in male and female zebra finches. *Am Nat* **144**, 908–934 (1994).
- 1304 307. Sundberg, J. Parasites, plumage coloration and reproductive success in the
1305 yellowhammer, *Emberiza citrinella*. *Oikos* **74**, 331 (1995).
- 1306 308. Bosholn, M., Fecchio, A., Silveira, P., Braga, É. M. & Anciães, M. Effects of avian
1307 malaria on male behaviour and female visitation in lekking blue-crowned manakins. *J*
1308 *Avian Biol* **47**, 457–465 (2016).
- 1309 309. Palokangas, P. *et al.* Female kestrels gain reproductive success by choosing brightly
1310 ornamented males. *Anim Behav* **47**, 443–448 (1994).
- 1311 310. Wiehn, J. Plumage characteristics as an indicator of male parental quality in the
1312 American kestrel. *J Avian Biol* **28**, 47 (1997).

- 1313 311. Weatherhead, P. J. & Boag, P. T. Pair and extra-pair mating success relative to male
1314 quality in red-winged blackbirds. *Behav Ecol Sociobiol* **37**, 81–91 (1995).
- 1315 312. Hill, G. E. Female house finches prefer colourful males: sexual selection for a
1316 condition-dependent trait. *Anim Behav* **40**, 563–572 (1990).
- 1317 313. Andersson, S. Female preference for long tails in lekking Jackson's widowbirds:
1318 experimental evidence. *Anim Behav* **43**, 379–388 (1992).
- 1319 314. Møller, A. P. Female choice selects for male sexual tail ornaments in the monogamous
1320 swallow. *Nature* **332**, 640–642 (1988).
- 1321 315. Grant, B. R. & Grant, P. R. Mate choice in Darwin's Finches. *Biol J Linn Soc* **32**, 247–
1322 270 (1987).
- 1323 316. Petrie, M. & Halliday, T. Experimental and natural changes in the peacock's (*Pavo*
1324 *cristatus*) train can affect mating success. *Behav Ecol Sociobiol* **35**, 213–217 (1994).
- 1325 317. Andersson, S. Sexual selection and cues for female choice in leks of Jackson's
1326 widowbird *Euplectes jacksoni*. *Behav Ecol Sociobiol* **25**, 403–410 (1989).
- 1327 318. Smith, H. G. & Montgomerie, R. Sexual selection and the tail ornaments of North
1328 American barn swallows. *Behav Ecol Sociobiol* **28**, 195–201 (1991).
- 1329 319. Grant, B. R. The significance of subadult plumage in Darwin's finches, *Geospiza*
1330 *fortis*. *Behav Ecol* **1**, 161–170 (1990).
- 1331 320. Røskoft, E. & Järvi, T. Male plumage colour and mate choice of female pied
1332 flycatchers *Ficedula hypoleuca*. *Ibis* **125**, 396–400 (1983).
- 1333 321. Zuk, M., Ligon, J. D. & Thornhill, R. Effects of experimental manipulation of male
1334 secondary sex characters on female mate preference in red jungle fowl. *Anim Behav*
1335 **44**, 999–1006 (1992).

- 1336 322. Gustafsson, L., Qvarnström, A. & Sheldon, B. C. Trade-offs between life-history traits
1337 and a secondary sexual character in male collared flycatchers. *Nature* **375**, 311–313
1338 (1995).
- 1339 323. Järvi, T., Røskft, E., Bakken, M. & Zumsteg, B. Evolution of variation in male
1340 secondary sexual characteristics. *Behav Ecol Sociobiol* **20**, 161–169 (1987).
- 1341 324. McLennan, D. A. & Shires, V. L. Correlation between the Level of infection with
1342 *Bunodera inconstans* and *Neoechinorhynchus rutili* and behavioral intensity in female
1343 brook sticklebacks. *J Parasitol* **81**, 675 (1995).
- 1344 325. Tárano, Z. Variation in male advertisement calls in the Neotropical frog *Physalaemus*
1345 *enesefae*. *Copeia* **2001**, 1064–1072 (2001).
- 1346 326. Isaksson, C., Ornborg, J., Prager, M. & Andersson, S. Sex and age differences in
1347 reflectance and biochemistry of carotenoid-based colour variation in the great tit *Parus*
1348 *major*. *Biol J Linn Soc* **95**, 758–765 (2008).
- 1349 327. Zuk, M. *et al.* The role of male ornaments and courtship behavior in female mate
1350 choice of red jungle fowl. *Am Nat* **136**, 459–473 (1990).
- 1351 328. Houde, A. E. & Torio, A. J. Effect of parasitic infection on male color pattern and
1352 female choice in guppies. *Behav Ecol* **3**, 346–351 (1992).
- 1353 329. Greenspan, S. E., Roznik, E. A., Schwarzkopf, L., Alford, R. A. & Pike, D. A. Robust
1354 calling performance in frogs infected by a deadly fungal pathogen. *Ecol Evol* **6**, 5964–
1355 5972 (2016).
- 1356 330. Gibson, R. M. Relationships between blood parasites, mating success and phenotypic
1357 cues in male sage grouse *Centrocercus urophasianus*. *Am Zool* **30**, 271–278 (1990).
- 1358 331. Hill, G. E. Plumage coloration is a sexually selected indicator of male quality. *Nature*
1359 **350**, 337–339 (1991).

- 1360 332. Fiske, P., Kålås, J. A. & Saether, S. A. Correlates of male mating success in the lekking
1361 great snipe (*Gallinago media*): results from a four-year study. *Behav Ecol* **5**, 210–218
1362 (1994).
- 1363 333. Clayton, D. H. Mate choice in experimentally parasitized rock doves: lousy males lose.
1364 *Am Zool* **30**, 251–262 (1990).
- 1365 334. Petrie, M., Tim, H. & Carolyn, S. Peahens prefer peacocks with elaborate trains. *Anim*
1366 *Behav* **41**, 323–331 (1991).
- 1367 335. Senar, J. C., Negro, J. J., Quesada, J., Ruiz, I. & Garrido, J. Two pieces of information
1368 in a single trait? The yellow breast of the great tit (*Parus major*) reflects both pigment
1369 acquisition and body condition. *Behaviour* **145**, 1195–1210 (2008).
- 1370 336. Hõrak, P., Ots, I., Vellau, H., Spottiswoode, C. & Pape Møller, A. Carotenoid-based
1371 plumage coloration reflects hemoparasite infection and local survival in breeding great
1372 tits. *Oecologia* **126**, 166–173 (2001).
- 1373 337. Molnár, O., Bajer, K., Mészáros, B., Török, J. & Herczeg, G. Negative correlation
1374 between nuptial throat colour and blood parasite load in male European green lizards
1375 supports the Hamilton–Zuk hypothesis. *Naturwissenschaften* **100**, 551–558 (2013).
- 1376 338. Safran, R. J. Plumage coloration, not length or symmetry of tail-streamers, is a
1377 sexually selected trait in North American barn swallows. *Behav Ecol* **15**, 455–461
1378 (2004).
- 1379 339. Hasegawa, M., Arai, E., Watanabe, M. & Nakamura, M. Colourful males hold high
1380 quality territories but exhibit reduced paternal care in barn swallows. *Behaviour* **151**,
1381 591–612 (2014).
- 1382 340. Harper, D. G. C. Feather mites, pectoral muscle condition, wing length and plumage
1383 coloration of passerines. *Anim Behav* **58**, 553–562 (1999).

- 1384 341. Castellanos, M. C. & Verdú, M. Meta-analysis of meta-analyses in plant evolutionary
1385 ecology. *Evol Ecol* **26**, 1187–1196 (2012).
- 1386 342. Hillebrand, H. *et al.* Thresholds for ecological responses to global change do not
1387 emerge from empirical data. *Nat Ecol Evol* **4**, 1502–1509 (2020).
- 1388 343. Tamburini, G. *et al.* Agricultural diversification promotes multiple ecosystem services
1389 without compromising yield. *Sci Adv* **6**, (2020).
- 1390 344. Nakagawa, S. & Santos, E. S. A. Methodological issues and advances in biological
1391 meta-analysis. *Evol Ecol* **26**, 1253–1274 (2012).
- 1392 345. Higgins, J. P. T., Thompson, S. G., Deeks, J. J. & Altman, D. G. Measuring
1393 inconsistency in meta-analyses. *Br Med J* **327**, 557–560 (2003).
- 1394 346. Cohen, J. *Statistical Power Analysis for the Behavioral Sciences*. (Lawrence Erlbaum
1395 Associates, Hillsdale, NJ, 1988).
- 1396 347. Nakagawa, S. *et al.* Methods for testing publication bias in ecological and evolutionary
1397 meta-analyses. *Methods Ecol Evol* **2021**, 1–18 (2021).
- 1398 348. Jennions, M. D. & Møller, A. P. Relationships fade with time: a meta-analysis of
1399 temporal trends in publication in ecology and evolution. *Proc R Soc B Biol Sci* **269**,
1400 43–48 (2002).
- 1401 349. Chaine, A. S. & Lyon, B. E. Adaptive plasticity in female mate choice dampens sexual
1402 selection on male ornaments in the lark bunting. *Science* **319**, 459–462 (2008).
- 1403 350. R Core Team. R: a language and environment for statistical computing. Preprint at
1404 <https://www.r-project.org/> (2025).
- 1405 351. Viechtbauer, W. Conducting meta-analyses in R with the metafor. *J Stat Softw* **36**, 1–48
1406 (2010).
- 1407 352. Bürkner, P. C. brms: an R package for Bayesian multilevel models using Stan. *J Stat*
1408 *Softw* **80**, (2017).

1409 353. Nakagawa, S. & Schielzeth, H. A general and simple method for obtaining R^2 from
1410 generalized linear mixed-effects models. *Methods Ecol Evol* **4**, 133–142 (2013).

1411 354. Nakagawa, S. *et al.* The orchard plot: cultivating a forest plot for use in ecology,
1412 evolution, and beyond. *Res Synth Methods* **12**, 4–12 (2021).

1413 355. Paradis, E. & Schliep, K. ape 5.0: an environment for modern phylogenetics and
1414 evolutionary analyses in R. *Bioinformatics* **35**, 526–528 (2019).

1415 356. Michonneau, F., Brown, J. W. & Winter, D. J. rotl: an R package to interact with the
1416 Open Tree of Life data. *Methods Ecol Evol* **7**, 1476–1481 (2016).

1417 357. Hothorn, T., Bretz, F. & Westfall, P. Simultaneous inference in general parametric
1418 models. *Biometrical Journal* **50**, 346–363 (2008).

1419

1420

Figures

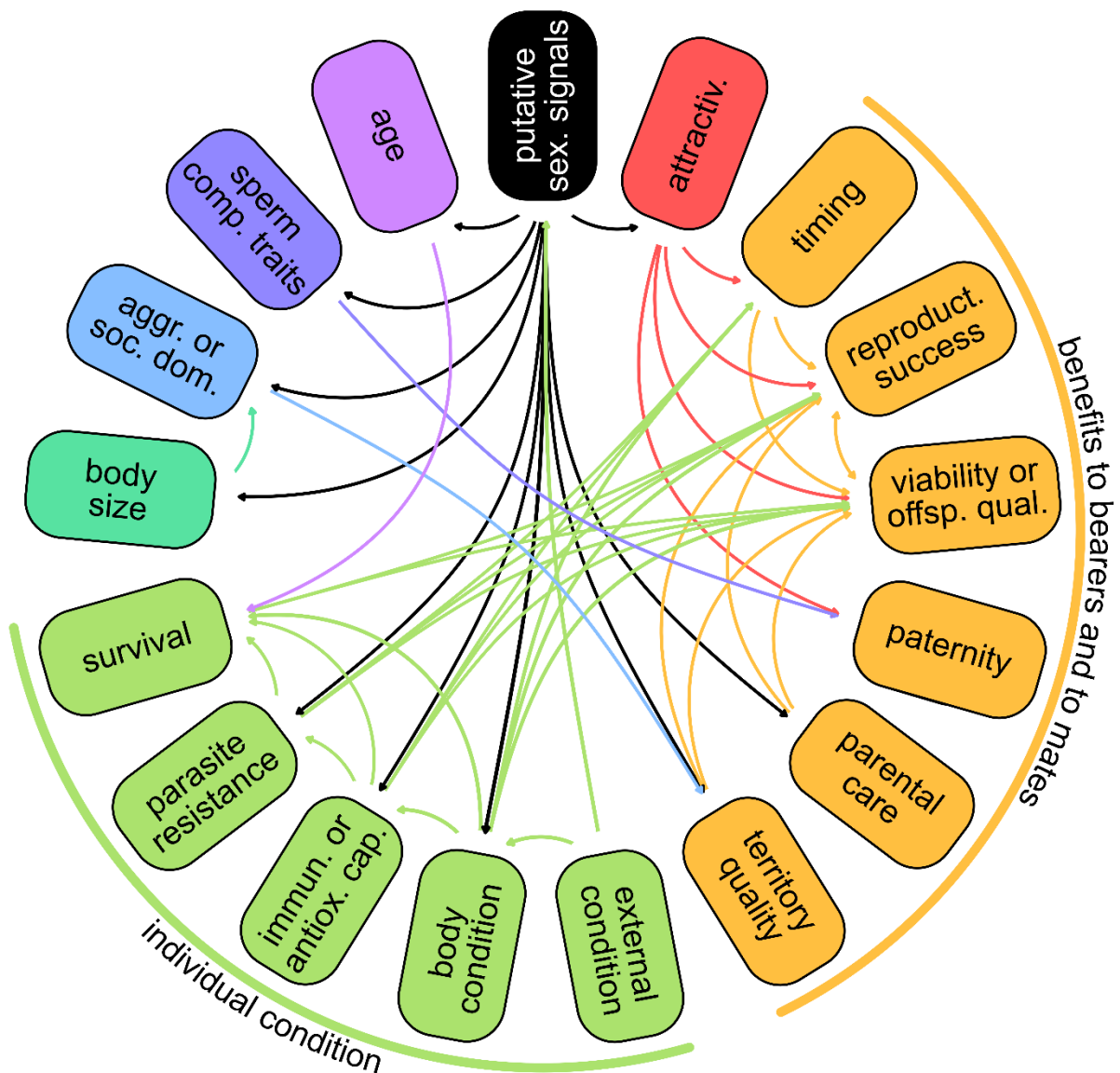


Figure 1.

Framework for the relationship between putative sexual signals and different variables (clockwise from the top): conspicuousness of putative sexual signals, attractiveness, benefits to bearers and to mates (timing, reproductive success, viability or offspring quality, paternity, parental care, territory quality), individual condition (external condition, body condition, immunological or antioxidant capacity, parasite resistance, survival), body size, aggression or social dominance, traits related to sperm competition, and age (see also Table S1). Arrows

1431 represent that a variable potentially influences or signals another variable (see text for
1432 details).

1433

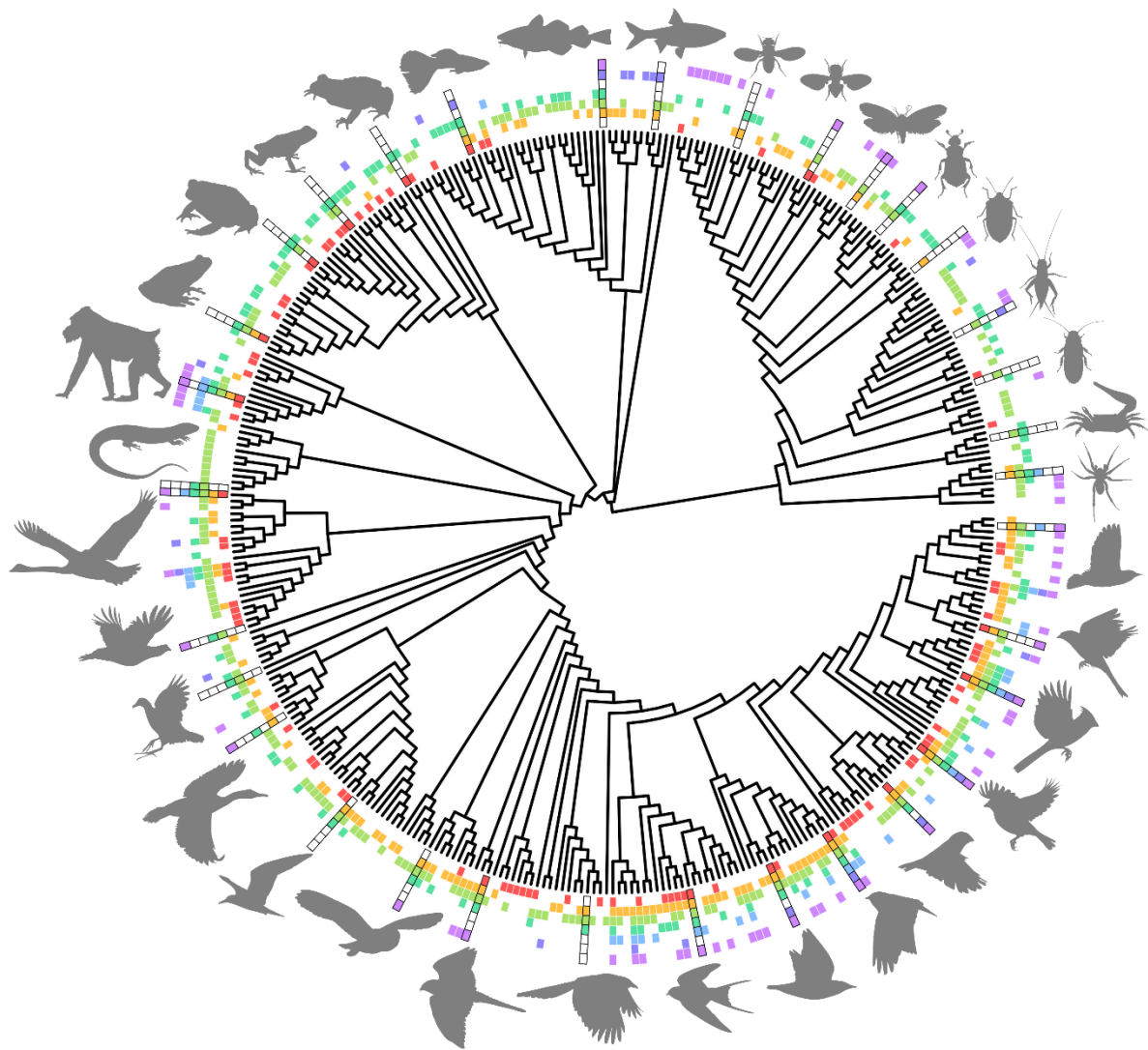


Figure 2.

Phylogeny of the 375 animal species present in our dataset. Each ring around the phylogenetic tree indicates the existence (colourful cells) or absence (blank cells) of data on the relationship between the conspicuousness of one or more putative sexual signals of a given species and a variable assessed in our study (red: attractiveness, orange: benefits to bearers and to mates, green: individual condition, aquamarine: body size, blue: aggression or social dominance, indigo: traits related to sperm competition, violet: age). Silhouettes represent species whose nearby cells have black edges.

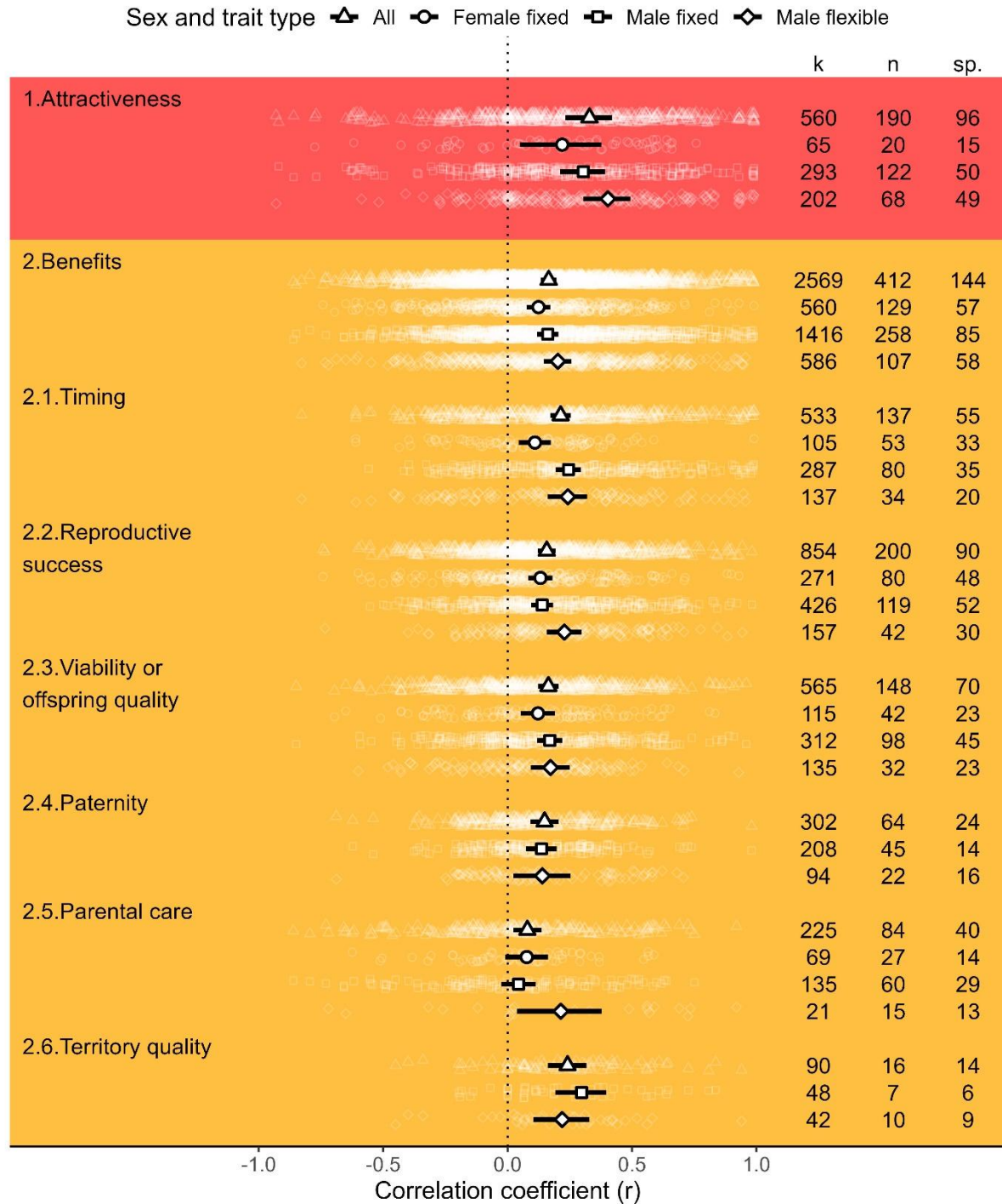


Figure 3.

Mean effect sizes for relationship between the conspicuousness of putative sexual signals and their bearers' attractiveness (red zone) and benefits (to bearers and to their mates; orange zone). Variance explained by fixed factors in these models (marginal R^2) were, respectively, 2.3% and 4.1% (see Table S6). The vertical black dotted line highlights zero (no relationship).

1449 k, n, and sp. represent, respectively, the number of effect sizes, empirical studies, and species
1450 for each set.

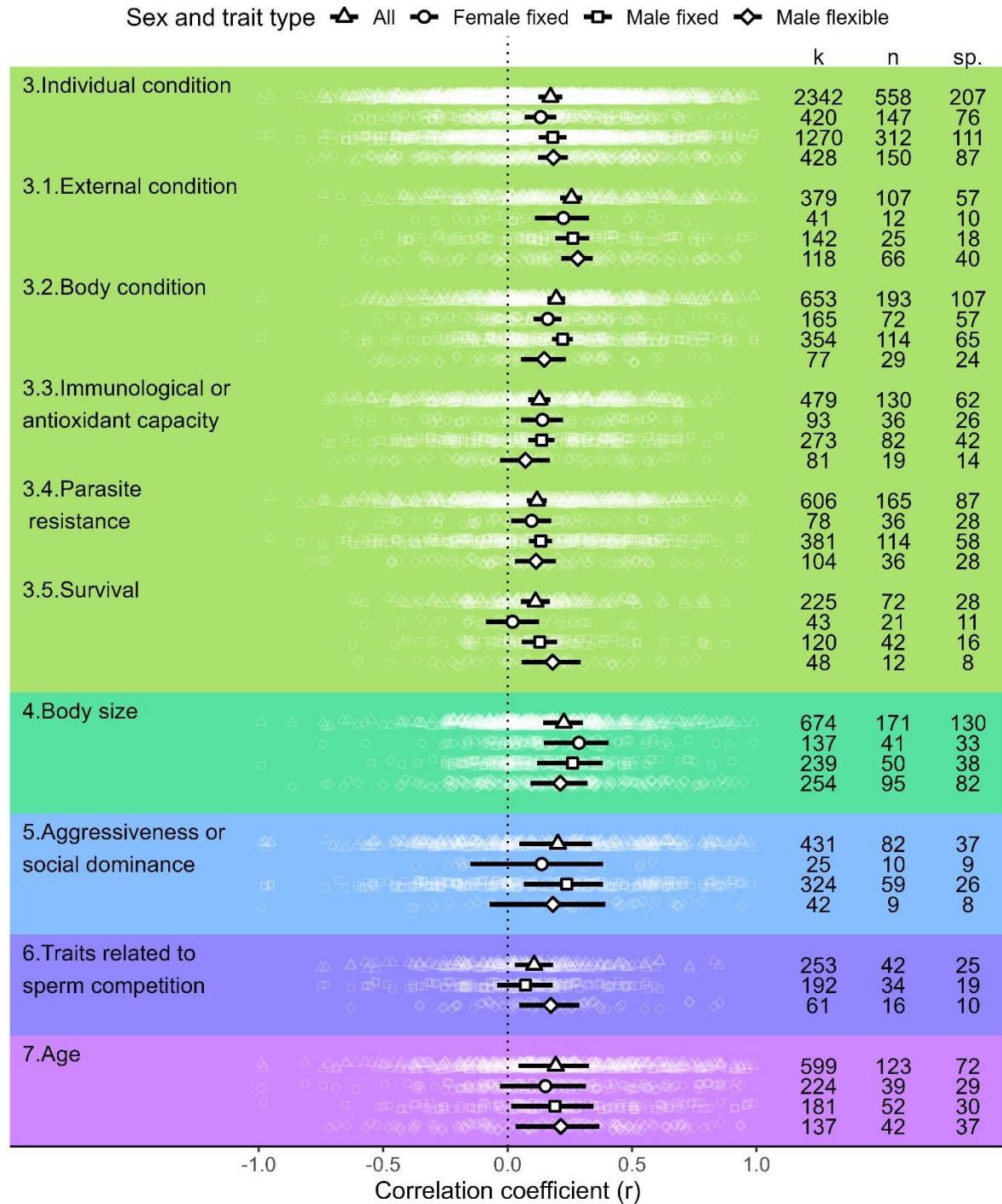


Figure 4.

Mean effect sizes for the relationship between the conspicuousness of putative sexual signals and their bearers' condition, body size, aggressiveness or social dominance, traits related to sperm competition, or age. Variance explained by fixed factors in these models (marginal R^2)

1456 were, respectively, 4.9%, 1.2%, 1.9%, 3.3%, and 0.5% (see Table S6). k, n, and sp. represent,
1457 respectively, the number of effect sizes, empirical studies, and species for each set.

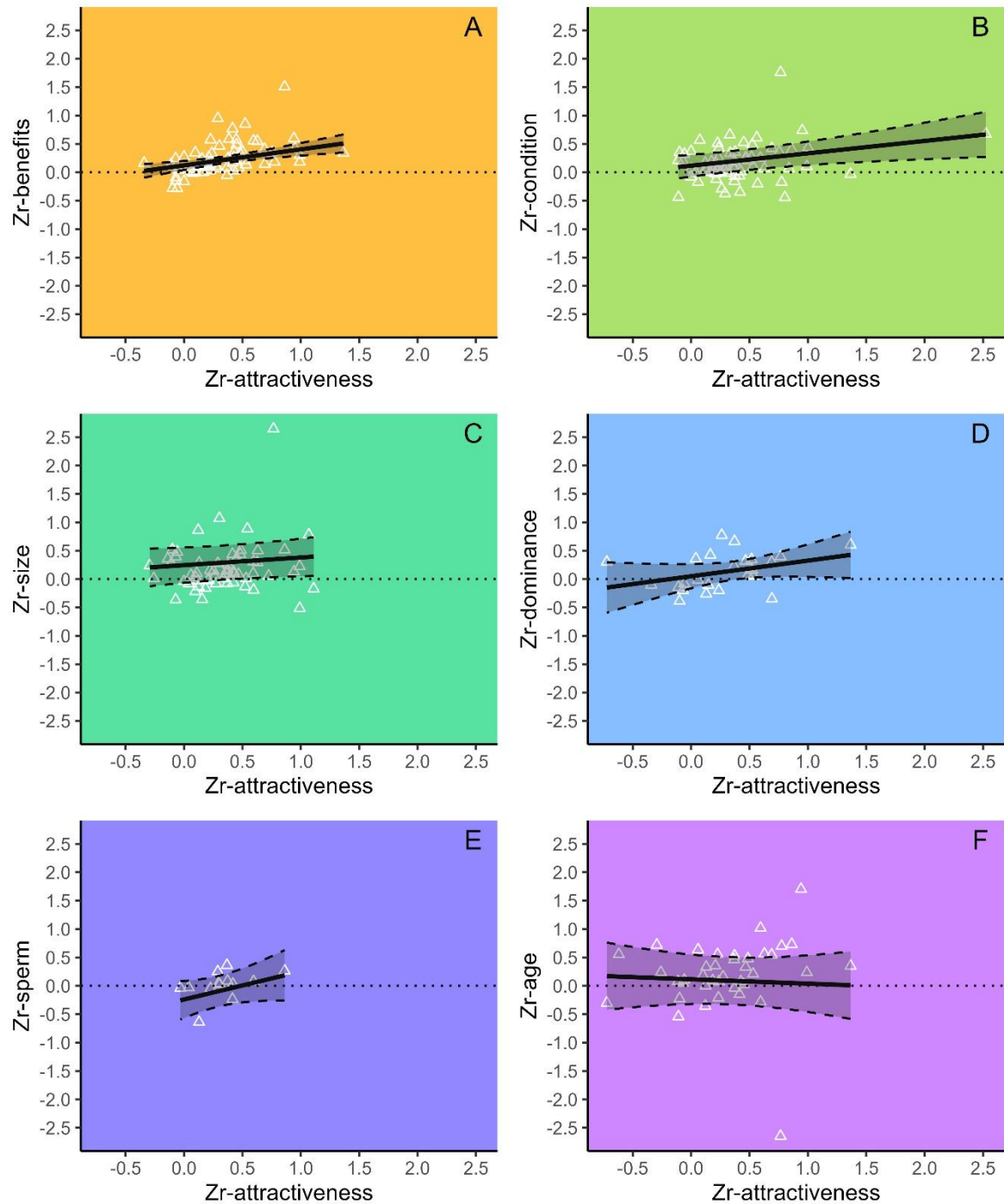
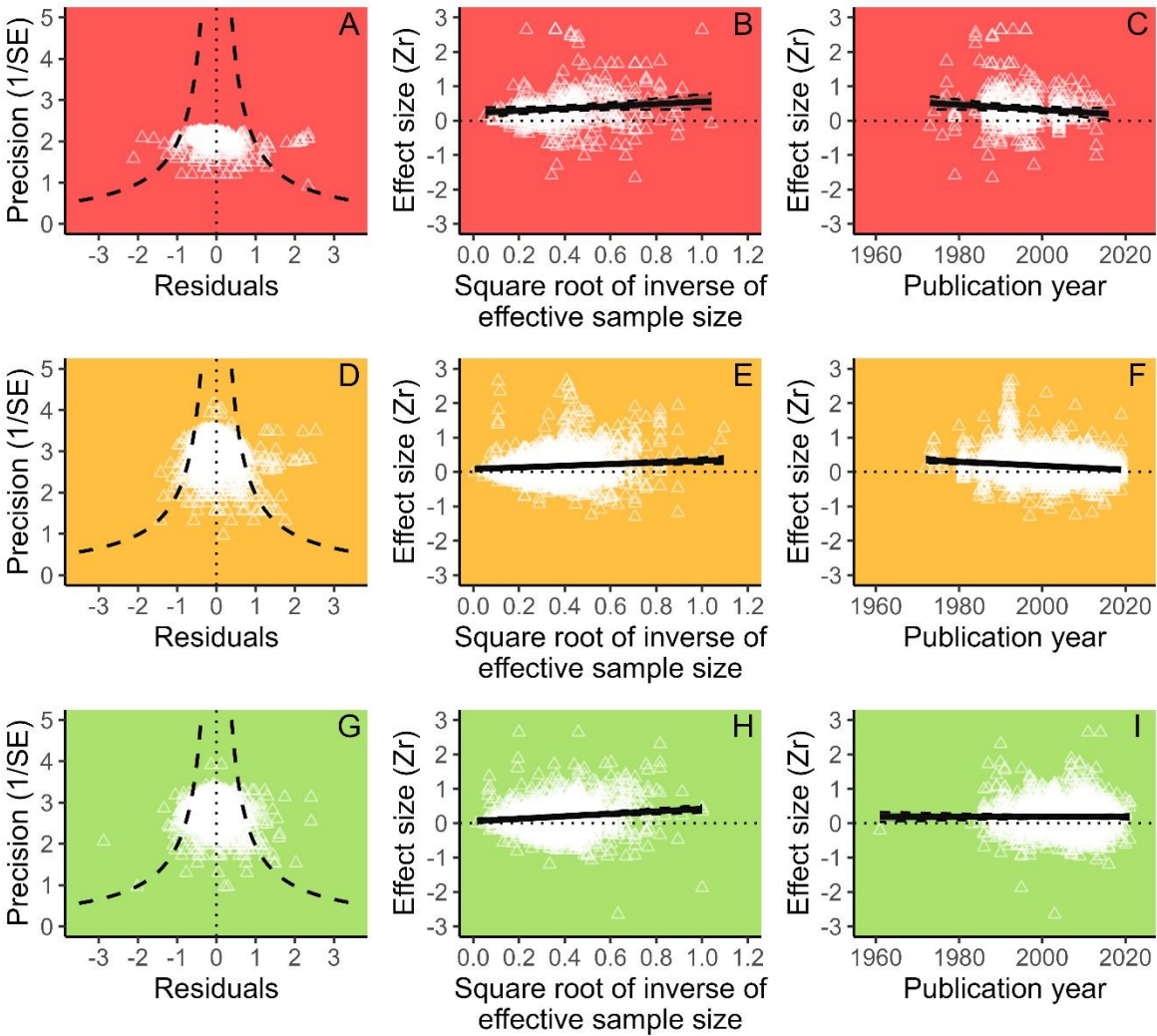


Figure 5.

Meta-regressions between two relationships: putative sexual signal conspicuousness and attractiveness to mates (x-axis, i.e. Zr-attractiveness) and putative sexual signal conspicuousness and other variables from our framework (y-axis; A: benefits, B: individual condition, C: body size, D: aggression or social dominance, E: traits related to sperm

1464 competition, F: age). Solid lines represent slopes, hashed areas between dashed lines
1465 represent slopes' 95% confidence interval, and dotted lines highlight zero.



1467

1468 **Figure S1.**

1469 Assessments of publication bias: funnel plots of the residuals of meta-analytical models with
1470 all moderators used (1st column), relationship between effect size (Z_r) and square root of
1471 inverse of effective sample size (2nd column), and relationship between effect size (Z_r) and
1472 publication year (3rd column). Dashed lines represent 95% confidence intervals for expected
1473 values (1st column) or for regression estimates (2nd and 3rd columns). Panels refer to
1474 attractiveness (A-C), benefits (D-F), or individual condition (G-I).

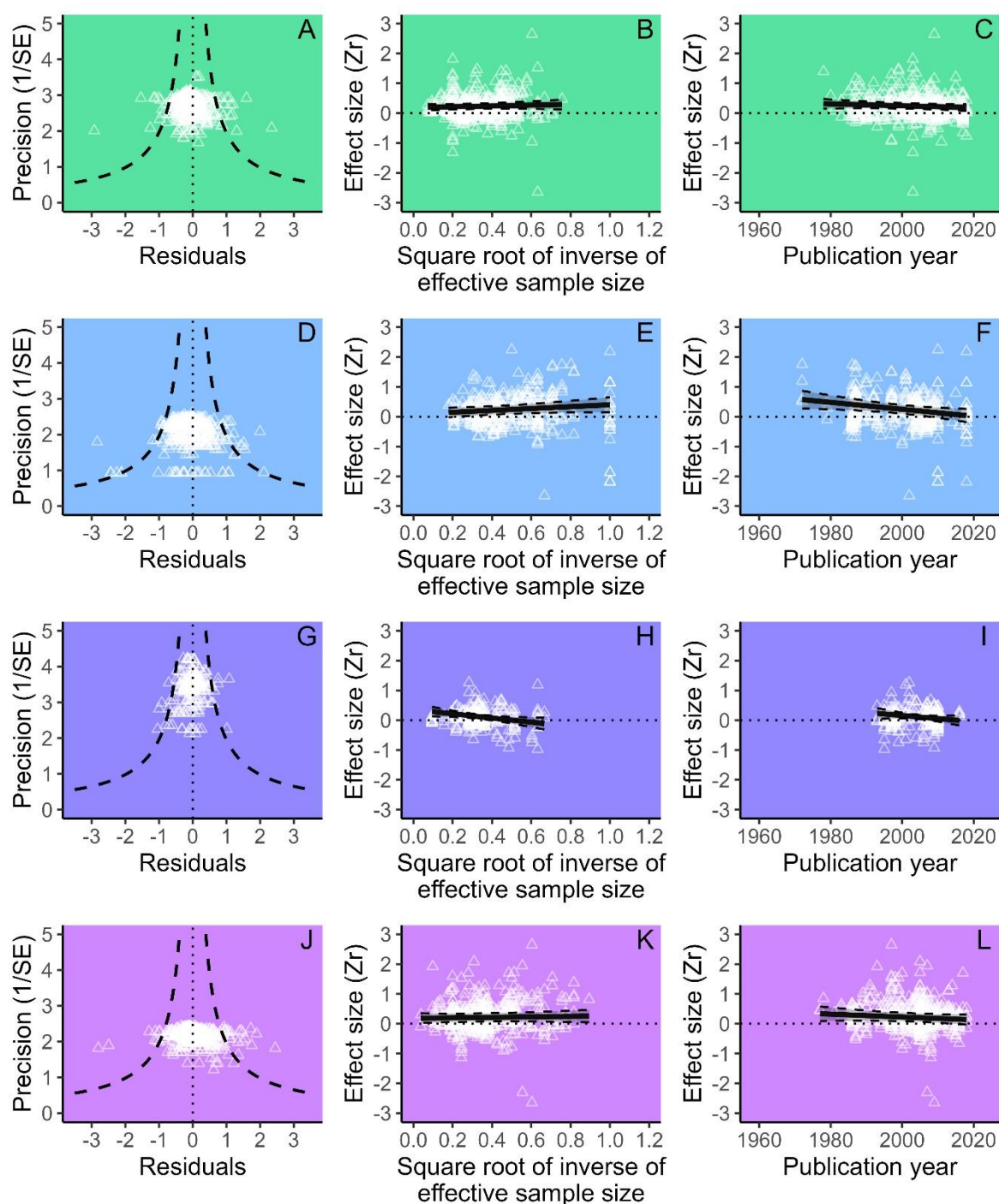
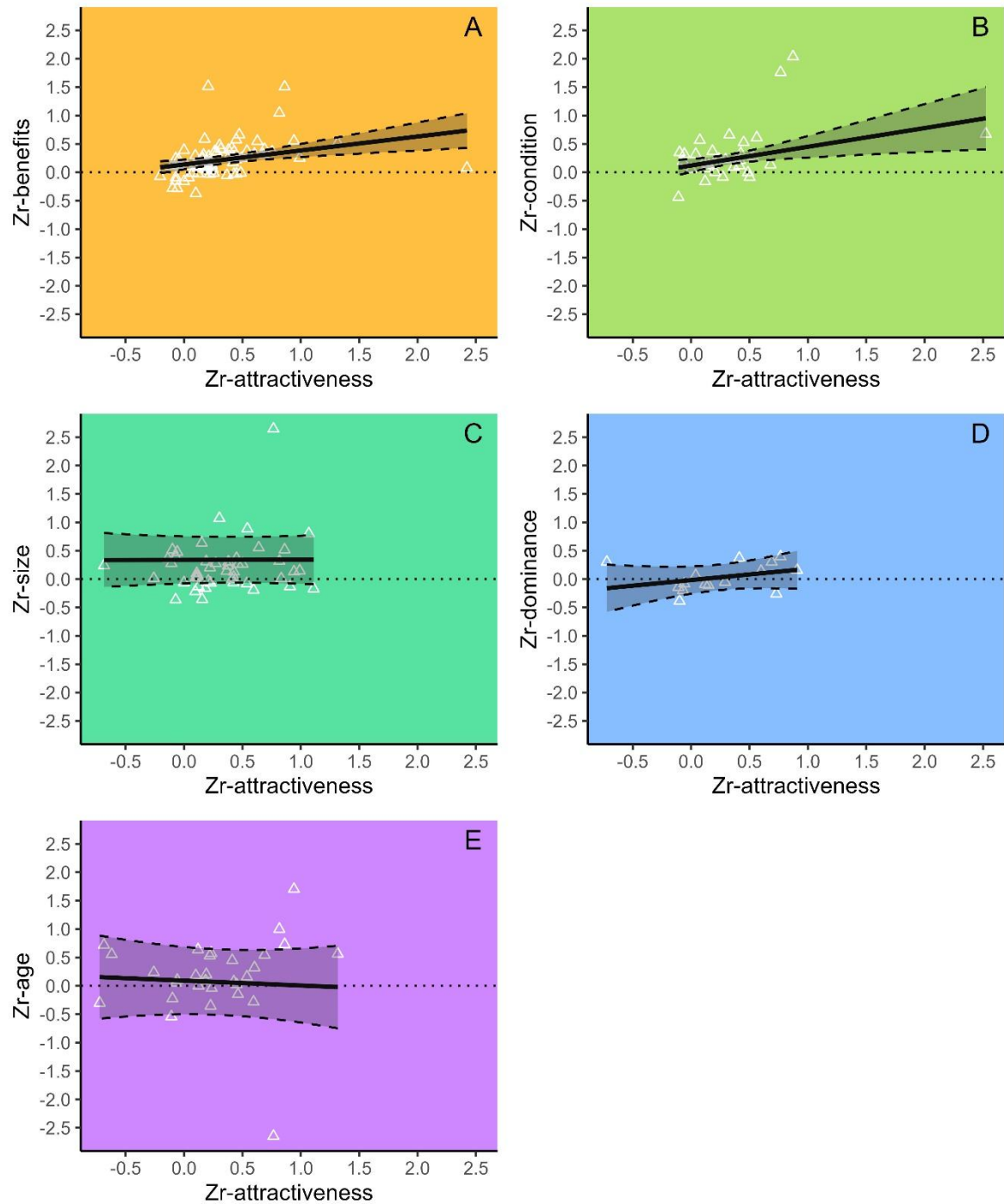


Figure S2.

Assessments of publication bias: funnel plots of the residuals of meta-analytical models with all moderators used (A, D, G, J), relationship between effect size (Zr) and square root of inverse of effective sample size (B, E, H, K), and relationship between effect size (Zr) and publication year (C, F, I, L). Dashed lines represent 95% confidence intervals for expected

1481 values (A, D, G, J) or for regression estimates (B, C, E, F, H, I, K, L). Panels refer to body
1482 size (A-C), aggressiveness or social dominance (D-F), traits related to sperm competition (G-
1483 I), or age (J-L).



1484

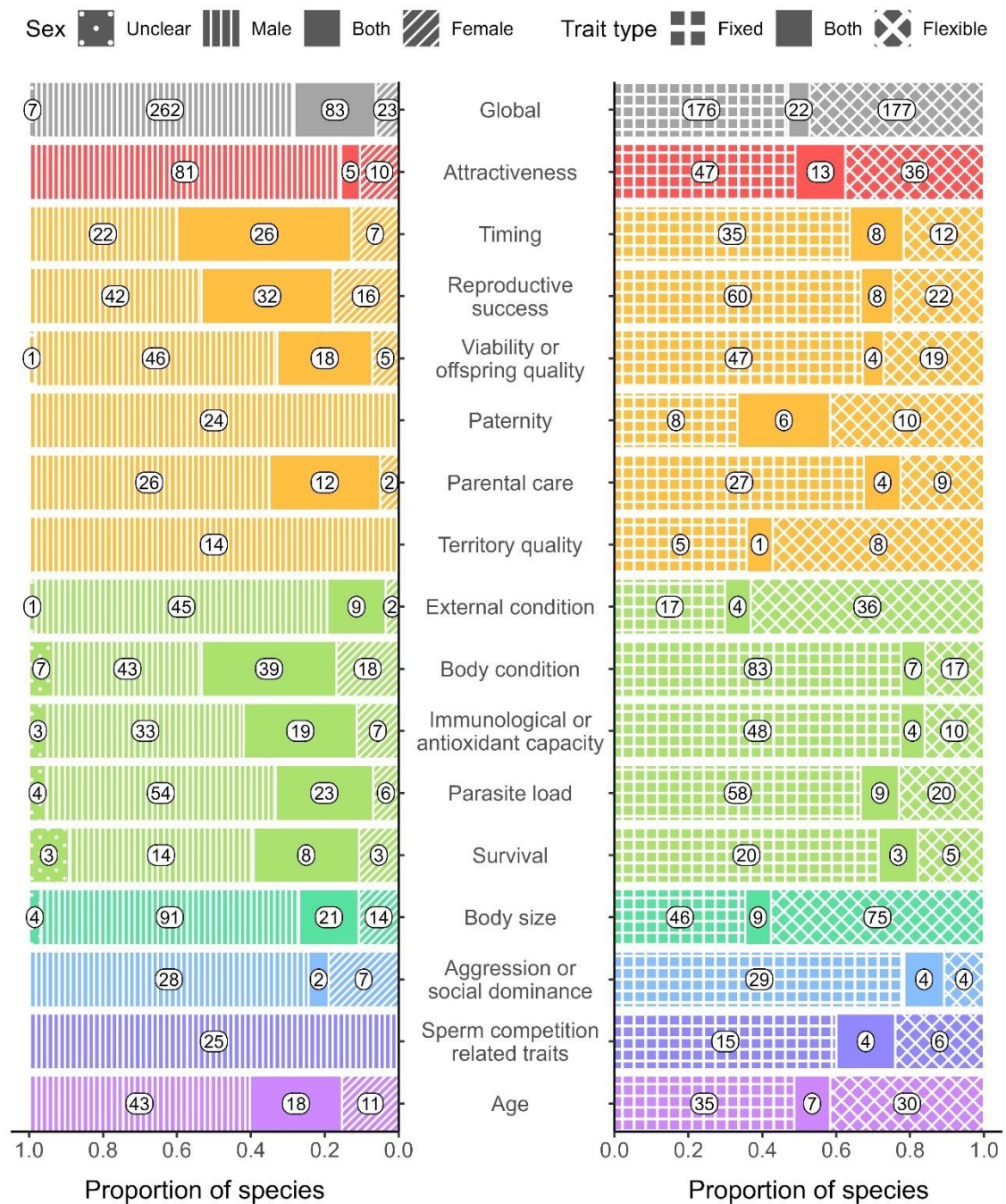
1485 **Figure S3.**

1486 Meta-regressions between two relationships (considering only information from the same
 1487 study, i.e. within-study approach): putative sexual signal conspicuousness and attractiveness
 1488 to mates (x-axis, i.e. Zr-attractiveness) and putative sexual signal conspicuousness and other
 1489 variables from our framework (y-axis; A: benefits, B: individual condition, C: body size, D:

1490 aggression of social dominance, E: age). Solid lines represent slopes, hashed areas between

1491 dashed lines represent slopes' 95% confidence interval, and dotted lines highlight zero.

1492



1493

1494 **Figure S4.**

1495 Proportion (x-axis) and number (inside bars) of species for which we had information on the

1496 relationship between putative sexual signal conspicuousness and several variables (y-axis)

1497 assessed in our study, for each sex (left panel) and trait type (right panel).



Figure S5.

Proportion (x-axis) and number (inside bars) of effect sizes for which we had information on the relationship between putative sexual signal conspicuousness and several variables (y-axis) assessed in our study, for each sex (left panel) and trait type (right panel).

Table S1.

Variables within our framework, for which we verified the relationship with putative sexual signal conspicuousness. *N* represents the number of primary meta-analyses in our dataset that explored these variables. Underlined examples are predicted to have a negative relationship with sexual signal conspicuousness, while others are predicted to have a positive relationship with sexual signal conspicuousness.

Variable	Sub variable	<i>N</i>	Examples
Attractiveness	-	15	Copulation success, harem size, success in mate choice trials, <u>divorce</u> , pairing success or status
Benefits to sexual signal bearers or to their mates	Timing	9	<u>Latency to arrive at breeding site</u> , <u>latency to nest</u> , <u>latency to pair</u> , <u>latency to mate</u> , <u>latency to breed</u> , <u>latency to lay eggs</u> , <u>latency for eggs to hatch</u> , <u>latency for offspring to fledge</u>
	Reproductive success	12	Clutch size, breeding success, number of fledglings, total offspring sired, number of recruits
	Offspring quality or viability	9	Antioxidants or hormones in yolk, offspring growth rate, offspring attractiveness, offspring reproductive success, proportion of eggs hatched, fledging success, offspring size
	Paternity	10	Within and extra-pair paternity, <u>cuckoldry occurrence</u>
	Parental care	7	Feeding rate, incubation frequency
	Territory	2	Territory quality or size
Individual condition	External condition	7	<u>Increase in brood size or reproductive effort</u> , decrease in brood size or reproductive effort, habitat quality, mother's condition, <u>date when reared</u> , diet supplementation, <u>dietary deprivation</u> , <u>nutritional stress</u>
	Body condition	11	Carotenoid, protein, or lipid amount in plasma or in feathers, unspecified body condition, feather quality, subcutaneous fat score, residual mass, pectoral score
	Immune or antioxidant capacity	10	Antibody response, <u>glucocorticoids</u> , hematocrit, <u>heterophil-to-lymphocyte ratio</u> , <u>oxidative damage</u> , white blood cells
	Parasite resistance	10	<u>Abundance of parasites</u> , <u>infection with a pathogen</u> , <u>pathogen richness</u> , parasite removal
	Survival	9	Days alive, seen or re-captured after a given period
Body size	-	8	Body (or part of it) mass, length, width, depth, area, or volume
Aggression or social dominance	-	7	Performed aggression, <u>received aggression</u> , dominance, fights initiated, social rank, nest defence, <u>distance from intruder</u> , territory tenure
Traits related to sperm competition	-	1	Quantity of seminal fluid, sperm size, sperm viability, testes size
Age	-	8	Age, ontogenetic stage (e.g. adult vs. juvenile)

1511 **Table S2.**

1512 Presumed directionality of conspicuousness among various putative sexual signals.

1513

Trait type	Trait description	Conspicuousness direction
Fixed	Colour, brightness	Often positive but negative in some cases (e.g. some melanin-based traits)
	Colour, chroma or saturation	Often positive but negative in some cases (e.g. some melanin-based traits)
	Colour, hue	Often positive but negative in some cases (e.g. blue traits)
	Colour, others (e.g. discrete ratings)	Case-dependent
	Size	Positive
	Symmetry	Positive
Flexible	Display duration	Positive
	Display vigour	Positive
	Latency to display	Negative
	Number of displays	Positive
	Repertoire size	Positive
	Sound amplitude	Positive
	Sound frequency	Often positive but negative in some cases (e.g. amphibians)
	Symmetry of extended phenotype (e.g. bowers)	Positive
	Other properties	Case-dependent

1514

Table S3.

Estimated correlation coefficients from meta-analytical models. Three types of analyses are reported regarding how we dealt with data points with ambiguous direction: (1) “original” refers to results reported in the manuscript, which used data points as originally extracted; (2) “opposite” instead uses the opposite value of these data points; (3) “removed” refers to analyses without these data points.

Variable	Sub variable	Set	Analysis	Estimate	Standard error	95%CI lower bound	95%CI upper bound
Attractiveness	-	All	Original	0.329	0.053	0.233	0.419
			Opposite	0.330	0.054	0.233	0.420
			Removed	0.333	0.054	0.235	0.423
		Female fixed	Original	0.220	0.088	0.050	0.377
			Opposite	0.234	0.090	0.062	0.393
			Removed	0.226	0.089	0.054	0.385
		Male fixed	Original	0.304	0.051	0.211	0.392
			Opposite	0.306	0.053	0.208	0.397
			Removed	0.309	0.053	0.212	0.400
		Male flexible	Original	0.403	0.057	0.304	0.493
			Opposite	0.394	0.060	0.291	0.488
			Removed	0.402	0.059	0.299	0.495
Benefits to sexual signal bearers or to their mates	-	All	Original	0.165	0.017	0.133	0.197
			Opposite	0.158	0.017	0.125	0.191
			Removed	0.170	0.017	0.137	0.203
		Female fixed	Original	0.124	0.025	0.077	0.171
			Opposite	0.126	0.029	0.070	0.181
			Removed	0.133	0.026	0.084	0.182
		Male fixed	Original	0.161	0.022	0.118	0.204
			Opposite	0.155	0.027	0.103	0.206
			Removed	0.164	0.023	0.120	0.208
		Male flexible	Original	0.202	0.029	0.146	0.257
			Opposite	0.194	0.033	0.131	0.256
			Removed	0.209	0.031	0.152	0.266
	Timing	All	Original	0.213	0.022	0.171	0.254
			Opposite	0.223	0.023	0.181	0.265
			Removed	0.219	0.023	0.176	0.262
		Female fixed	Original	0.110	0.033	0.045	0.174
			Opposite	0.144	0.034	0.079	0.209
			Removed	0.126	0.035	0.059	0.193
		Male fixed	Original	0.245	0.028	0.194	0.295
			Opposite	0.254	0.028	0.201	0.305
			Removed	0.242	0.028	0.190	0.294
			Original	0.242	0.043	0.161	0.320

		Male flexible	Opposite	0.219	0.044	0.136	0.300
			Removed	0.247	0.044	0.165	0.326
			Original	0.157	0.019	0.121	0.193
		All	Opposite	0.152	0.019	0.115	0.189
			Removed	0.166	0.020	0.128	0.203
			Original	0.132	0.025	0.084	0.180
		Female fixed	Opposite	0.134	0.026	0.084	0.183
			Removed	0.140	0.026	0.089	0.190
			Original	0.139	0.023	0.094	0.183
		Male fixed	Opposite	0.131	0.024	0.085	0.176
			Removed	0.142	0.024	0.097	0.188
			Original	0.228	0.038	0.157	0.297
		Male flexible	Opposite	0.224	0.038	0.152	0.295
			Removed	0.245	0.039	0.172	0.315
			Original	0.164	0.022	0.123	0.205
		All	Opposite	0.149	0.022	0.106	0.190
			Removed	0.171	0.022	0.128	0.214
			Original	0.122	0.036	0.053	0.190
		Female fixed	Opposite	0.107	0.036	0.037	0.177
			Removed	0.132	0.038	0.058	0.204
			Original	0.170	0.026	0.119	0.219
		Male fixed	Opposite	0.155	0.027	0.103	0.206
			Removed	0.178	0.027	0.127	0.229
			Original	0.172	0.041	0.093	0.250
		Male flexible	Opposite	0.157	0.042	0.075	0.236
			Removed	0.171	0.043	0.088	0.252
			Original	0.149	0.029	0.092	0.204
		All	Opposite	0.143	0.030	0.085	0.199
			Removed	0.151	0.030	0.094	0.208
			Original	0.136	0.032	0.074	0.198
		Male fixed	Opposite	0.133	0.033	0.070	0.196
			Removed	0.136	0.032	0.073	0.197
			Original	0.140	0.060	0.022	0.253
		Male flexible	Opposite	0.119	0.062	-0.003	0.237
			Removed	0.140	0.061	0.022	0.254
			Original	0.079	0.029	0.022	0.136
		All	Opposite	0.052	0.030	-0.006	0.110
			Removed	0.069	0.031	0.008	0.130
			Original	0.077	0.044	-0.009	0.162
		Female fixed	Opposite	0.030	0.045	-0.057	0.117
			Removed	0.070	0.049	-0.025	0.164
			Original	0.044	0.036	-0.026	0.113
		Male fixed	Opposite	0.020	0.036	-0.051	0.091
			Removed	0.027	0.037	-0.046	0.100
			Original	0.214	0.092	0.037	0.378
		Male flexible	Opposite	0.248	0.092	0.071	0.409
			Removed	0.253	0.095	0.072	0.418
			Original	0.241	0.042	0.162	0.317
		Territory	Opposite	0.241	0.043	0.161	0.318
			Removed	0.236	0.043	0.156	0.314

Individual condition	-	Male fixed	Original	0.298	0.057	0.192	0.397
			Opposite	0.300	0.058	0.193	0.400
			Removed	0.285	0.058	0.176	0.387
		Male flexible	Original	0.219	0.060	0.104	0.329
			Opposite	0.213	0.061	0.096	0.324
			Removed	0.229	0.061	0.113	0.338
	External condition	All	Original	0.174	0.026	0.124	0.224
			Opposite	0.174	0.027	0.121	0.225
			Removed	0.177	0.026	0.128	0.226
		Female fixed	Original	0.134	0.034	0.069	0.198
			Opposite	0.137	0.035	0.070	0.203
			Removed	0.137	0.034	0.072	0.201
		Male fixed	Original	0.184	0.030	0.126	0.241
			Opposite	0.182	0.032	0.121	0.241
			Removed	0.187	0.030	0.129	0.244
		Male flexible	Original	0.186	0.033	0.123	0.247
			Opposite	0.184	0.034	0.119	0.248
			Removed	0.186	0.033	0.124	0.248
		All	Original	0.263	0.026	0.215	0.310
			Opposite	0.265	0.029	0.211	0.318
			Removed	0.274	0.028	0.222	0.325
		Female fixed	Original	0.228	0.062	0.110	0.339
			Opposite	0.222	0.062	0.104	0.334
			Removed	0.227	0.065	0.104	0.343
		Male fixed	Original	0.269	0.041	0.194	0.341
			Opposite	0.278	0.041	0.203	0.350
			Removed	0.289	0.043	0.210	0.364
		Male flexible	Original	0.290	0.038	0.219	0.357
			Opposite	0.293	0.039	0.222	0.360
			Removed	0.296	0.039	0.226	0.364
	Body condition	All	Original	0.198	0.020	0.161	0.235
			Opposite	0.199	0.024	0.153	0.244
			Removed	0.202	0.022	0.160	0.244
		Female fixed	Original	0.163	0.030	0.105	0.220
			Opposite	0.171	0.030	0.113	0.228
			Removed	0.168	0.031	0.108	0.227
		Male fixed	Original	0.225	0.024	0.180	0.269
			Opposite	0.220	0.024	0.175	0.265
			Removed	0.228	0.025	0.181	0.273
		Male flexible	Original	0.148	0.048	0.054	0.238
			Opposite	0.147	0.049	0.053	0.239
			Removed	0.145	0.049	0.051	0.237
	Immune or antioxidant capacity	All	Original	0.129	0.023	0.084	0.174
			Opposite	0.126	0.028	0.073	0.179
			Removed	0.128	0.026	0.078	0.178
		Female fixed	Original	0.141	0.045	0.054	0.227
			Opposite	0.142	0.045	0.054	0.228
			Removed	0.144	0.046	0.056	0.230
		Male fixed	Original	0.138	0.028	0.084	0.191
			Opposite	0.135	0.028	0.081	0.189

			Removed	0.140	0.029	0.084	0.195
			Original	0.072	0.052	-0.030	0.172
			Opposite	0.081	0.053	-0.022	0.182
			Removed	0.073	0.053	-0.030	0.175
		Parasite resistance	Original	0.119	0.021	0.078	0.159
			Opposite	0.123	0.025	0.074	0.171
			Removed	0.128	0.023	0.082	0.172
			Original	0.097	0.042	0.015	0.178
			Opposite	0.108	0.042	0.025	0.189
			Removed	0.110	0.044	0.023	0.195
			Original	0.134	0.025	0.086	0.181
			Opposite	0.136	0.025	0.088	0.183
			Removed	0.141	0.025	0.092	0.189
			Original	0.115	0.043	0.030	0.197
			Opposite	0.100	0.044	0.015	0.184
			Removed	0.111	0.044	0.026	0.196
		Survival	Original	0.113	0.031	0.053	0.172
			Opposite	0.100	0.034	0.034	0.166
			Removed	0.108	0.033	0.044	0.172
			Original	0.020	0.055	-0.088	0.127
			Opposite	0.003	0.055	-0.105	0.111
			Removed	0.013	0.057	-0.098	0.123
			Original	0.130	0.038	0.057	0.202
			Opposite	0.125	0.038	0.051	0.197
			Removed	0.133	0.039	0.058	0.206
			Original	0.183	0.065	0.057	0.302
			Opposite	0.147	0.066	0.019	0.271
			Removed	0.162	0.066	0.033	0.286
Body size	-	All	Original	0.230	0.045	0.144	0.312
			Opposite	0.228	0.051	0.132	0.319
			Removed	0.232	0.041	0.155	0.307
		Female fixed	Original	0.295	0.080	0.147	0.431
			Opposite	0.297	0.084	0.140	0.440
			Removed	0.295	0.077	0.152	0.426
		Male fixed	Original	0.267	0.078	0.119	0.403
			Opposite	0.269	0.083	0.113	0.413
			Removed	0.262	0.075	0.120	0.394
		Male flexible	Original	0.215	0.065	0.092	0.333
			Opposite	0.212	0.069	0.079	0.337
			Removed	0.221	0.061	0.105	0.331
Aggression or social dominance	-	All	Original	0.205	0.082	0.047	0.354
			Opposite	0.202	0.087	0.034	0.358
			Removed	0.206	0.084	0.044	0.358
		Female fixed	Original	0.138	0.147	-0.151	0.404
			Opposite	0.114	0.147	-0.174	0.383
			Removed	0.131	0.148	-0.159	0.401
		Male fixed	Original	0.242	0.092	0.065	0.404
			Opposite	0.245	0.095	0.064	0.410
			Removed	0.245	0.093	0.066	0.409
			Original	0.184	0.131	-0.072	0.416

Traits related to sperm competition	Male flexible	Opposite	0.188	0.130	-0.066	0.420
		Removed	0.189	0.130	-0.064	0.419
	All	Original	0.107	0.040	0.029	0.185
		Opposite	0.103	0.044	0.017	0.188
		Removed	0.108	0.040	0.031	0.184
	Male fixed	Original	0.072	0.058	-0.043	0.184
		Opposite	0.068	0.059	-0.048	0.183
		Removed	0.072	0.058	-0.042	0.185
	Male flexible	Original	0.175	0.066	0.046	0.297
		Opposite	0.170	0.067	0.041	0.294
		Removed	0.176	0.066	0.047	0.299
Age	All	Original	0.196	0.079	0.043	0.340
		Opposite	0.201	0.054	0.099	0.300
		Removed	0.197	0.085	0.032	0.350
	Female fixed	Original	0.153	0.094	-0.030	0.326
		Opposite	0.174	0.075	0.028	0.313
		Removed	0.163	0.100	-0.032	0.346
	Male fixed	Original	0.193	0.092	0.014	0.360
		Opposite	0.208	0.074	0.067	0.342
		Removed	0.203	0.098	0.013	0.380
	Male flexible	Original	0.217	0.096	0.032	0.387
		Opposite	0.198	0.078	0.047	0.341
		Removed	0.206	0.102	0.009	0.388

Table S4.

Heterogeneity (I^2) observed in meta-analytical models on the relationship between the expression of putative sexual signals and different variables within our framework.

Variable	I^2_{total}	$I^2_{within-study}$ (effect size ID)	$I^2_{across-study}$ (study ID)	$I^2_{across-species}$ (species ID)	$I^2_{phylogeny}$	$I^2_{within-species}$ trait type
Attractiveness	91.537	55.947	25.180	<0.001	2.252	8.158
Benefits to sexual signal bearers or to their mates	88.017	51.591	25.048	0.684	<0.001	10.694
Individual condition	85.176	52.427	26.649	4.778	1.321	<0.001
Body size	87.193	35.080	04.278	<0.001	3.599	44.236
Aggression or social dominance	78.527	19.885	43.136	9.353	5.237	0.916
Traits related to sperm competition	75.923	31.769	42.970	<0.001	1.183	0.000
Age	93.585	44.460	28.500	<0.001	7.395	13.230

Table S5.

Pairwise comparisons (two-tailed test) among combinations of sex and trait type. Shaded cells highlight significant comparisons ($p\text{-value} < 0.05$).

Variable	Sub variable	Female fixed vs. male fixed		Female fixed vs. male flexible		Male fixed vs. male flexible	
		<i>z-value</i>	<i>p-value</i>	<i>z-value</i>	<i>p-value</i>	<i>z-value</i>	<i>p-value</i>
Attractiveness	–	-1.048	0.294	-2.070	0.038	-1.735	0.083
Benefits to sexual signal bearers or to their mates	–	-2.068	0.039	-2.229	0.026	-1.227	0.220
	Timing	-3.975	<0.001	-2.538	0.011	0.058	0.954
	Reproductive success	-0.276	0.783	-2.214	0.027	-2.120	0.034
	Offspring quality or viability	-1.321	0.186	-0.949	0.343	-0.058	0.953
	Paternity	–	–	–	–	-0.050	0.960
	Parental care	0.664	0.507	-1.380	0.168	-1.774	0.076
	Territory	–	–	–	–	-1.024	0.306
Individual condition	–	-2.484	0.013	-1.662	0.097	-0.071	0.943
	External condition	-0.718	0.472	-0.924	0.356	-0.403	0.687
	Body condition	-2.060	0.039	0.283	0.777	1.540	0.124
	Immune or antioxidant capacity	0.075	0.941	1.046	0.295	1.213	0.225
	Parasite resistance	-0.851	0.395	-0.301	0.763	0.407	0.684
	Survival	-1.981	0.048	-1.983	0.047	-0.750	0.453
Body size	–	0.936	0.349	1.241	0.215	0.812	0.417
Aggression or social dominance	–	-0.710	0.478	-0.257	0.797	0.515	0.606
Traits related to sperm competition	–	–	–	–	–	-2.076	0.038
Age	–	-0.862	0.388	-0.701	0.484	-0.276	0.782

Table S6.

Marginal R^2 (i.e. variation of data explained by fixed factors) and conditional R^2 (i.e. variation of data explained by random and fixed factors) of meta-analytical models on the relationship between putative sexual signal conspicuousness and different variables, with sub variable, sex, and trait type as fixed factors.

Variable	Marginal R^2	Conditional R^2
Attractiveness	0.023	0.387
Benefits to sexual signal bearers or to their mates	0.041	0.400
Individual condition	0.049	0.395
Body size	0.012	0.617
Aggression or social dominance	0.019	0.742
Traits related to sperm competition	0.033	0.571
Age	0.005	0.537

Table S7.

Results of meta-analytical models on the relationship between putative sexual signal conspicuousness and different variables, with the square root of the inverse of effective sample size (SIESS) and publication year of empirical sources as moderators. Positive estimates for SIESS indicate publication bias and negative estimates for publication year indicate time-lag publication bias (shaded rows highlight these cases when statistically significant).

Variable	Term	Estimate	SE	z-value	p-value	95%CI
Attractiveness	Intercept	0.356	0.045	7.835	<0.001	0.267 to 0.442
	SIESS	0.056	0.028	1.948	0.051	-0.001 to 0.111
	Time-lag	-0.054	0.028	-1.937	0.053	-0.109 to 0.000
Benefits to sexual signal bearers or to their mates	Intercept	0.170	0.016	10.85	<0.001	0.140 to 0.201
	SIESS	0.033	0.010	3.444	0.001	0.014 to 0.052
	Time-lag	-0.052	0.012	-4.262	<0.001	-0.077 to -0.028
Individual condition	Intercept	0.187	0.027	6.910	<0.001	0.134 to 0.240
	SIESS	0.048	0.010	5.015	<0.001	0.029 to 0.066
	Time-lag	0.001	0.011	0.060	0.953	-0.021 to 0.023
Body size	Intercept	0.231	0.046	5.067	<0.001	0.142 to 0.321
	SIESS	0.016	0.018	0.894	0.372	-0.020 to 0.052
	Time-lag	-0.029	0.024	-1.200	0.230	-0.076 to 0.018
Aggression or social dominance	Intercept	0.244	0.073	3.326	0.001	0.100 to 0.388
	SIESS	0.063	0.036	1.752	0.080	-0.007 to 0.134
	Time-lag	-0.115	0.047	-2.465	0.014	-0.207 to -0.024
Traits related to sperm competition	Intercept	0.111	0.036	3.117	0.002	0.041 to 0.181
	SIESS	-0.082	0.034	-2.416	0.016	-0.149 to -0.016
	Time-lag	-0.059	0.040	-1.455	0.146	-0.138 to 0.020
Age	Intercept	0.211	0.070	3.017	0.003	0.074 to 0.349
	SIESS	0.012	0.023	0.542	0.588	-0.032 to 0.056
	Time-lag	-0.038	0.030	-1.245	0.213	-0.098 to 0.022

Table S8.

Association between the relationship between putative sexual signal conspicuousness and attractiveness (Zr-attractiveness) and the relationship between putative sexual signal conspicuousness and other variables (benefits: Zr-benefits, individual condition: Zr-condition, body size: Zr-size, aggression or social dominance: Zr-dominance, traits related to sperm competition: Zr-sperm, and age: Zr-age), depending on two approaches (across- and within-studies) and two distinct models (uni- and bivariate). *N* indicates the number of effect sizes used in each approach. Shaded rows highlight estimates whose 95% confidence interval does not overlap zero.'

Variable	Approach	<i>N</i>	Model	Estimate	95%CI
Benefits to sexual signal bearers or to their mates	Across-studies	66	Univariate	0.283	0.136 to 0.429
			Bivariate	0.739	0.359 to 0.985
	Within-studies	68	Univariate	0.246	0.102 to 0.390
			Bivariate	0.636	0.272 to 0.941
Individual condition	Across-studies	64	Univariate	0.218	0.053 to 0.383
			Bivariate	0.466	-0.078 to 0.922
	Within-studies	32	Univariate	0.330	0.085 to 0.574
			Bivariate	0.505	-0.056 to 0.944
Body size	Across-studies	59	Univariate	0.135	-0.077 to 0.347
			Bivariate	0.167	-0.309 to 0.639
	Within-studies	47	Univariate	0.003	-0.225 to 0.231
			Bivariate	-0.013	-0.663 to 0.667
Aggression or social dominance	Across-studies	24	Univariate	0.275	-0.102 to 0.653
			Bivariate	0.197	-0.551 to 0.796
	Within-studies	15	Univariate	0.199	-0.167 to 0.565
			Bivariate	0.057	-0.649 to 0.702
Traits related to sperm competition	Across-studies	13	Univariate	0.494	-0.126 to 1.114
			Bivariate	0.286	-0.820 to 0.970
	Within-studies	1	Univariate	-	-
			Bivariate	-	-
Age	Across-studies	39	Univariate	-0.076	-0.481 to 0.328
			Bivariate	0.001	-0.664 to 0.719
	Within-studies	30	Univariate	-0.086	-0.523 to 0.351
			Bivariate	0.118	-0.772 to 0.923