

## **A complex interplay between natural and anthropogenic factors shapes plant diversity patterns in Mediterranean coastal dunes**

Simona Sarmati <sup>1,2,7</sup>, Claudia Angiolini <sup>1,7\*</sup>, Marta Gaia Sperandii <sup>2,3</sup>, Vojtěch Barták <sup>4</sup>, Matilde Gennai <sup>5</sup>, Alicia Teresa Rosario Acosta <sup>2,7</sup>, Andrea Bertacchi <sup>6</sup>, Gianmaria Bonari <sup>1,7</sup>, Bruno Foggi <sup>5</sup>, Simona Maccherini <sup>1,7</sup>, Daniele Viciani <sup>5</sup>, Manuele Bazzichetto <sup>4</sup>

<sup>1</sup>*Department of Life Sciences, University of Siena, Siena (Italy)*

<sup>2</sup>*Department of Science, University of Roma Tre, Rome (Italy)*

<sup>3</sup>*Department of Botany and Zoology, Masaryk University, Brno (Czech Republic)*

<sup>4</sup>*Department of Spatial Sciences, Faculty of Environmental Sciences, Czech University of Life Science, Praha-Suchdol (Czech Republic)*

<sup>5</sup>*Department of Biology, University of Florence, Florence (Italy)*

<sup>6</sup>*Department of Agriculture, Food and Environment, University of Pisa, Pisa (Italy)*

<sup>7</sup>*NBFC, National Biodiversity Future Center, 90133 Palermo, Italy*

\*Corresponding author: [claudia.angiolini@unisi.it](mailto:claudia.angiolini@unisi.it)

### **ORCID:**

Sarmati S. <https://orcid.org/0000-0001-7299-8541>

Angiolini C. <https://orcid.org/0000-0002-9125-764X>

Sperandii M.G. <https://orcid.org/0000-0002-2507-5928>

Barták V. <https://orcid.org/0000-0001-9887-1290>

Acosta A.T.R. <https://orcid.org/0000-0001-6572-3187>

Bertacchi A. <https://orcid.org/0000-0002-3276-3876>

Bonari G. <https://orcid.org/0000-0002-5574-6067>

Foggi B. <https://orcid.org/0000-0001-6451-4025>

Maccherini S. <https://orcid.org/0000-0002-2025-7546>

Viciani D. <https://orcid.org/0000-0003-3422-5999>

Bazzichetto M. <https://orcid.org/0000-0002-9874-5064>

### **Abstract**

#### **Context**

A long history of human colonisation has profoundly altered Mediterranean coastal dunes, as well as their capacity of providing ecosystem services important for human well-being. The provisioning of these services depends on the integrity of the dune system, which is formed and maintained by coastal plant communities. Analysing the drivers of plant diversity is thus crucial for preserving Mediterranean coastal ecosystems.

#### **Objectives**

We investigated the influence of natural factors, anthropogenic activities and shoreline dynamism on different facets of plant diversity, i.e species richness and the proportion of typical and ruderal species. Moreover, we examined whether natural and anthropogenic factors act as direct or rather indirect drivers of the loss of dune plant diversity.

#### **Methods**

Using 20 cm resolution orthophotos, we mapped a wide Mediterranean coastal landscape and obtained a set of variables describing the distribution, abundance and size of natural (coastal dune habitats) and anthropogenic (urban areas and tourism facilities) patches. From the orthophotos, we also quantified the shoreline dynamism (coastal erosion and accretion) occurred in the area over a 10-year period. We then analysed how dune plant species richness, as well as the proportion of typical and ruderal species, related to the landscape variables and shoreline dynamism. Also, using piecewise structural equation modelling, we investigated the complex interplay between landscape variables and shoreline dynamism in shaping coastal plant diversity patterns.

## Results

When focusing on plant species richness, we found no evidence of a negative effect of anthropogenic activities (urbanisation and tourism) on the diversity of coastal vegetation. However, analysing typical and ruderal plant species revealed that the latter were favoured under human-related disturbance, while typical species of the foredune decreased in areas subject to high anthropogenic pressure. Results of the structural equation models highlighted that shoreline dynamism indirectly affected dune plant diversity through its influence on the landscape configuration.

## Conclusions

Our results indicate that (i) looking only at plant species richness can lead to underestimating the impact of anthropogenic activities on coastal dune vegetation; and (ii) that human-related activities change the composition of dune vegetation, eventually promoting the establishment of ruderal species. Finally, results show that coastal erosion acts as an indirect driver of plant diversity loss.

Keywords: aerial orthophotos, coastal erosion, coastal tourism, dune vegetation, habitat types, land cover map, remote sensing, species guilds, typical species.

## 1. Introduction

Coastal dunes are transitional ecosystems characterised by limiting abiotic conditions and strong natural disturbances. Here, a sharp sea-land environmental gradient determined by changes in salinity, water, and nutrient availability, shapes the so-called 'coastal zonation'. This is a typical mosaic of plant communities coexisting in a short space: from the shoreline towards the inland (Forey et al. 2008; Acosta et al. 2009; Maun 2009; Marcenò et al. 2018). The interaction between sand and coastal plants adapted to burial determines (and maintains) the dune morphology through a process known as *eco-morphodynamism* (Yousefi Lalimi et al. 2017; Malavasi et al. 2021). This, in turn, preserves the integrity of the whole coastal landscape. A well-conserved coastal dune zonation secures the stable provisioning of a wide range of ecosystem services, such as coastal defence (Durán and Moore 2013; Feagin et al. 2015), groundwater storage and purification (Rhymes et al. 2015), nutrient cycling, soil formation and climate regulation (Jones et al. 2008; Barbier et al. 2011).

Maintaining the diversity of plant communities is thus crucial for ensuring the eco-morphodynamism of coastal dunes (Sperandii et al. 2019; Malavasi et al. 2021). In particular, preserving typical (plant) species (defined by Evans and Arvela (2011) as taxa contributing to habitat structuring and functioning, and as good indicators of favourable habitat quality; see also Bonari et al. 2021a) is key for dune building and consolidation (Angiolini et al. 2018). The replacement of typical by ruderal species (defined as nitrophilous and synanthropic taxa that colonise areas subject to high disturbance regimes; Pignatti et al. 2005) is especially dangerous, as ruderal species do not fulfil the same functions of typical species (Navarra and Quintana-Ascencio 2012; Biondi et al. 2012a). As a result, ruderal species further exacerbate the negative impact of anthropogenic activities on the dune system (Sarmati et al. 2019). Analysing different species guilds, such as typical and ruderal species, can therefore aid in predicting the consequences of disturbance on coastal plant communities, and, in turn, on the eco-morphodynamism of the dune system (Prisco et al. 2016; Bonari et al. 2021b).

During the last 70 years, European coastal ecosystems have been strongly altered by tourism and urbanisation, which have led to the loss of about three-quarters of the dune systems (Heslenfeld et al. 2004). As a consequence, coastal dunes are currently regarded among the most threatened habitats in Europe (Janssen et al. 2016). Tourism and urbanisation have hit particularly strongly in the Mediterranean basin, which is characterised by a long history of human colonisation (Malavasi et al. 2013, 2016; Basnou et al. 2015). Here, human activities have reduced the (natural) heterogeneity of coastal landscapes through fragmentation and habitat loss (Malavasi et al. 2016). As an example, tourism has altered the structure and plant composition of dune habitats, particularly of the foredune (Tzatzanis et al. 2003; Carboni et al. 2010; Ciccarelli 2014), through both direct (e.g. mechanical beach cleaning, Dugan and Hubbard 2010) and indirect pressures (e.g. trampling and facilitation of invasion by non-native species; Santoro et al. 2012; Dimitrakopoulos et al. 2017).

Along with urbanisation and tourism, coastal erosion is another key driver of plant diversity loss in dune ecosystems (Feagin et al. 2005; Voudokas et al. 2020). Its intensity can be exacerbated by human activities, such as river damming and bed quarrying (Pranzini et al. 2015). The consequences of coastal erosion on dune systems are predicted to be especially severe in the Mediterranean basin due to the simultaneous effect of climate-change related phenomena such as sea-level rise (Antonioli et al. 2017, 2020). However, the impact of coastal erosion on dune vegetation has so far been tested only locally and in isolation, i.e. not accounting for other disturbance types (Ciccarelli et al. 2012; Bertacchi et al. 2016; Bazzichetto et al. 2020). We therefore lack knowledge on whether and how coastal erosion interacts with urbanisation and tourism in affecting coastal communities.

Multiple factors (e.g. integrity of dune habitats, urbanisation, tourism, coastal erosion) can therefore simultaneously affect dune vegetation and its role in the eco-morphodynamism process preserving the coastal ecosystem. In this study, we investigated how these factors determine plant diversity patterns along a wide Mediterranean coast. To this aim, we took a landscape perspective and analysed the association between the configuration (i.e. distribution, size and abundance) of natural and anthropogenic coastal patches (which relate to the conservation status of the dune system and the intensity of anthropogenic pressure insisting on it) and dune vegetation, while simultaneously accounting for the effect of coastal erosion. We looked at the whole plant community response to human activities and coastal erosion, as well as at the separate response of typical and ruderal species.

In this context, our aims were to: i) investigate the response of community species richness, typical species and ruderal species to natural and anthropogenic factors affecting the coastal landscape; ii) explore the complex interplay among the multiple factors shaping coastal plant diversity; and iii) assess whether they directly affect dune vegetation or rather mediate other factors' effect.

## **2. Materials and methods**

### **2.1. Study area**

Our study area extends across a broad Mediterranean coastal sector of Central Italy (380 km long, of which 215 km comprise sandy beaches), included within the administrative boundary of the Tuscany region (between 43°51'N and 42°22'N; see Fig. 1a). We focused on 8 sites covering almost the entirety of the sandy coasts of Tuscany (Fig. 1a). Here, under natural conditions, the dune vegetation follows the typical coastal zonation of Mediterranean dunes, with annual pioneer species colonising the coastal sector closest to the shoreline, and, moving inland, perennial herbaceous communities occurring on embryonic and shifting dunes. Further inland, species typical of the Mediterranean dune shrubs settle where the dune becomes more stable and less exposed to salt spray, wind, and sand burial (Acosta et al. 2006; Maun 2009; Prisco et al. 2012; Ciccarelli 2015).

The coast of Tuscany is characterised by a latitudinal gradient of climate and anthropogenic activity, with the northern sector being overall wetter (higher precipitation) and more densely urbanised (Venturi et al. 2014; Zullo et al. 2015; Fratianni and Acquotta 2017; Pesaresi et al. 2017). Despite various countermeasures (Pranzini et al. 2018), almost 50% of the coast has undergone erosion, although with intensity changing across sites. Pranzini et al. (2020) evidenced that between 1985 and 2005: 9.1% of the coast underwent severe erosion, 12.0% low-intensity erosion, 27.0% experienced a slow shoreline retreat, while 23.6% underwent slow accretion. The main causes of this coastal retreat are the drastic reduction of sediment from rivers, riverbed quarrying, and the construction of weirs and dams (Pranzini 2021).

## 2.2. Sampling of vegetation data

Between 2018 and 2021, we sampled 473 vegetation quadrats of 2 m × 2 m (hereafter referred to as plot), which is considered an adequate number to analyse plant diversity patterns in Mediterranean dune systems (Acosta et al. 2000; Carboni et al. 2009; Maccherini et al. 2020). The sampling was carried out during the vegetative season, i.e. from April to July. Plots were located according to a stratified random design across an area of approximately 5.7 km<sup>2</sup>. The two sampling strata were the herbaceous and woody dune sectors. Specifically, 338 plots were located across an area of approximately 2.88 km<sup>2</sup> from the upper beach to coastal stable dune grassland (herbaceous dune sector), and 135 plots were located across an area of 2.82 km<sup>2</sup> constituted by coastal dune shrubs (woody dune sector). Using the EUNIS habitat classification system (Chytrý et al. 2020), we assigned each plot to the following habitat types: sand beach drift lines (EUNIS code: N12), shifting coastal dunes (N14), coastal stable dune grasslands (N16), and coastal dune shrubs (N1B). Note that these habitat types exhaustively represent all plant communities of Mediterranean coastal dunes (Supplementary Information, Appendix1, Table S1). In each plot, we recorded the presence and cover of all plant species. Nomenclature follows Bartolucci et al. (2018) for native species, and Galasso et al. (2018) for non-native species (see also the Portal to the Flora of Italy 2023).

## 2.3. Plant diversity and proportion of typical and ruderal species

For each plot, we computed the species richness (i.e. the total number of species recorded) as a measure of plant diversity. We also calculated the plot-specific proportion of typical and ruderal species. To this aim, we first assigned all species recorded in a plot to the following mutually exclusive guilds: typical, ruderal, and non-native (Supplementary Information, Appendix1, Table S2). Note that we only considered non-native species to compute the proportion of typical and ruderal species, but we did not analyse them as (1) they occurred sporadically in our plots; and (2) non-native species follow different ecological processes than native species, and a focus on these processes was beyond our scope. Then, we computed the proportion of typical and ruderal species as the ratio between the number of species belonging to each of the two analysed guilds and the total species richness recorded in the plot. Note that species were counted as typical depending on which EUNIS category the plot belonged to. As an example, *Calamagrostis arenaria* subsp. *arundinacea* was considered typical only in plots classified as habitat N14. The list of typical species for our study area was extracted from the Italian Interpretation Manual of the Habitats Directive (Supplementary Information, Appendix1, Table S1, Biondi et al. 2009; Biondi and Blasi 2015). Species assignment to the ruderal guild followed existing literature (Biondi et al. 2012b; Del Vecchio et al. 2016; Prisco et al. 2017).

## 2.4. Remote sensing data

From the archive of remote sensing data of Tuscany (GEOscopio 2022), we gathered 20 cm resolution aerial orthophotos acquired in 2019 that we used to produce a land cover map of the coastal landscape (see 2.4.1). From the land cover map, we derived: i) a set of variables related to natural and anthropogenic factors (see 2.4.2) and ii) a measure of shoreline dynamism, i.e. erosion and accretion (see 2.4.3).

#### 2.4.1. Land cover map

We produced a detailed land cover map (scale 1:2000, Fig. 1b) by photo interpretation in a QGIS environment (QGIS Development Team 2018). We used both RGB (red-green-blue, i.e. natural colour) and NirGB (near infrared, i.e. modified false colour) orthophotos to enhance the discrimination of conifer taxa (appearing in dark red on the NirGB band) from deciduous species. The final land cover map covered a coastal belt of 300 m width (from the shoreline inwards, hereafter the coastal landscape), which was previously indicated as an adequate extent to analyse coastal dunes in Central Italy (Carranza et al. 2008; Malavasi et al. 2016; Bazzichetto et al. 2018). To allow for interoperability, we classified natural, semi-natural and artificial areas according to the standard European CORINE nomenclature extended to a 4-level detail, which proved to be suitable for describing the vegetation types of coastal dune ecosystems (Acosta et al. 2005; Carboni et al. 2009; Malavasi et al. 2018; Sperandii et al. 2019) and allows comparison among studies.

We mapped a total of 11 land cover types (Supplementary Information Appendix1, Table S3): 3 associated with natural psammophilous coastal vegetation, 3 with artificial areas, 2 with forest vegetation belonging to coniferous afforestation and mixed forests, and 3 with non-psammophilous coastal vegetation and semi-natural vegetation. The three land cover vegetation types belonging to psammophilous coastal vegetation are: (1) beach pioneer vegetation, i.e. the upper beach colonised by low pioneer annual vegetation of the drift lines; (2) herbaceous dune vegetation, including the annual and perennial herbaceous psammophilous communities of the foredunes; and (3) woody dune vegetation, corresponding to the shrub vegetation of the fixed dune with *Juniperus* spp. or sclerophyllous shrubs (Acosta et al. 2005). Land cover types associated with forest vegetation included the evergreen mixed forest and coniferous afforestation found along the innermost and better preserved sandy coasts. In some cases, a specific land cover class included multiple EUNIS habitat types (e.g. herbaceous dune vegetation included shifting coastal dune communities and coastal stable dune grasslands, corresponding to, respectively, EUNIS N14 and N16). Therefore, it was not possible to perform a 1:1 association between each land cover type and a single habitat type (sensu EUNIS class).

To discriminate between tourism-related and other anthropogenic activities (e.g. urbanisation), we classified tourism (including bath-houses and camping, agriculture fields) and artificial (urban and industrial) areas as separate cover types (Supplementary Information Appendix1, Table S3).

#### 2.4.2. Landscape metrics

Using the land cover map outlined in 2.4.1., we derived a set of metrics describing different characteristics of the coastal landscape.

Specifically, to define the spatial configuration of natural and anthropogenic patches and combine this information with floristic data from the plot, we used the linear buffer approach proposed by Malavasi et al. (2018). In a nutshell, this approach consists in: 1) creating a rectangular buffer around each vegetation plot (Fig. 1b); 2) cropping the portion of the land cover map that intersects the perimeter of the rectangular buffer (Fig. 1c); and 3) computing on the cropped land cover map a set of metrics (see below) characterising the landscape configuration around the vegetation plot. The landscape metrics computed from each rectangular buffer are then assigned (when building the dataset for the analyses) to the corresponding vegetation plot.

In our study, we first generated 300 m long (from the shoreline towards the inland) × 50 m wide (along the shoreline) rectangular buffers around each plot (Fig. 1c). The rectangular buffers were oriented so as to perpendicularly cut the coastal landscape. We set the width of the buffers to 50 m (leaving 25 m on each side of the plot). This buffer size was reported as an adequate size to relate the configuration of the coastal landscape with plant diversity (Malavasi et al. 2018). Also, we compared the value of the landscape metrics extracted at 50, 100, and 200 m width and found no differences. Second, for each plot, we computed the proportion (expressed in %) of the area covered by each land cover class within the buffer (e.g. proportion of artificial areas; see Supplementary Information Appendix1, Table S4).

Beyond area-based variables, we computed the shortest distance from each plot to the closest artificial and tourism facility. Also, we computed the Shannon and Simpson's indices to measure landscape diversity and evenness, that is the diversity and evenness of land cover types included within each buffer (Shannon index; Shannon 1948).

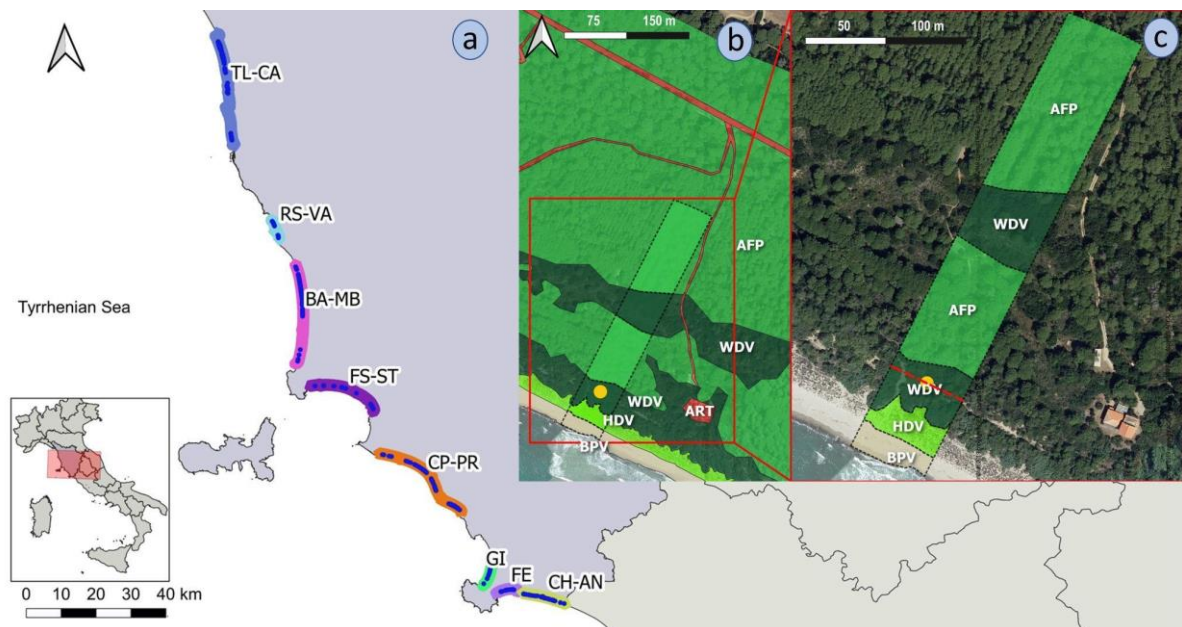


Fig. 1 Study area. Panel a: distribution of vegetation plots within the eight analysed coastal sites (highlighted in different colours): TL-CA (from Dune Litoranee di Torre del Lago to Calambrone); RS-VA (Rosignano Solvay and Vada); BA-MB (from Marina di Bibbona to Baratti); FS-ST (from Parco Costiero di Sterpaia to Tomboli di Follonica e Scarlino); CP-PR (from Dune di Castiglione della Pescaia to Principina a mare); GI (Giannella); FE (Feniglia); CH-AN (from Ansedonia to Chiarone Scalo). Panel b: a snapshot of the land cover map derived from the 20 cm aerial orthophotos. The black dashed line represents the 300 × 50 m buffer around each plot (yellow dot). Panel c: enhanced representation of a slice of land cover map cut by the rectangular buffer (300 m × 50 m), which was built around each vegetation plot (yellow dot). The width of the rectangular buffer is highlighted as a red dashed line. AFP: coniferous afforestation; ART: artificial areas; BPV: beach pioneer vegetation; HDV: herbaceous dune vegetation; WDV: woody dune vegetation.

#### 2.4.3. Shoreline dynamism

To measure shoreline dynamism (i.e. coastal erosion and accretion), we mapped changes in the shoreline position between 2010 and 2019. To this aim, we gathered a map of the shoreline position for our study area for 2010 from the Tuscan archive of remote sensing data (GEOscopio 2022). Then, we derived the shoreline position for 2019 from our land cover map. Finally, for each plot we first calculated the shortest Euclidean distance from the two shorelines and then subtracted the plot-to-shoreline distance in 2019 from the plot-to-shoreline distance in 2010. A positive value of

this metric indicates that the plot was in an area that underwent accretion between 2010 and 2019, while a negative value indicates an area that underwent erosion.

## 2.5. *Statistical analysis*

### 2.5.1. *Response of dune plant communities to natural and anthropogenic factors*

We fitted regression models to analyse how species richness, as well as the proportion of typical and ruderal species, related to the landscape variables and shoreline dynamism (i.e. coastal erosion and accretion). Species richness was modelled using a Poisson generalised linear model (GLM) with 'log' link. To model the proportion of typical and ruderal species we used a binomial GLM with 'logit' link.

To reduce the impact of multicollinearity, before fitting the models we computed the variance inflation factor (VIF; *vif* function, *car* R package, Fox and Weisberg 2019) for each predictor, and excluded those with a VIF value greater than or equal to 5 (Supplementary Information Appendix1, Table S4). The final set of predictors included: the proportion of area covered by beach pioneer vegetation, herbaceous dune vegetation, woody dune vegetation, coniferous afforestation and mixed forest (among the natural land cover classes); the proportion of area covered by agricultural and artificial areas (among the anthropogenic land cover classes). Also, we included landscape diversity (Shannon's index), distance to artificial areas and shoreline dynamism. The initial set of predictors also considered the latitude (y-coordinate) of the vegetation plot, as previous studies observed a latitudinal gradient of dune species richness due to the north coast of Tuscany being overall wetter (higher precipitation) and more densely inhabited (D'Antraccoli et al. 2019; Del Vecchio et al. 2018; Richerson and Lum 1980; see also 2.1.). However, we subsequently decided to exclude latitude from the analyses as it was found to be highly correlated with one of the dune landscape classes (herbaceous dune vegetation, HDV). Finally, we hypothesised that the response of coastal dune plant communities to natural and anthropogenic factors would change along the coastal zonation and, as a result, across habitats. For this reason, we included the statistical interaction between habitat type (included as a categorical variable) and all predictors.

For each GLM, we started with a full model including the previously mentioned statistical interactions. Then, using likelihood ratio tests, we derived a series of reduced models by sequentially dropping terms for which there was no evidence of an interaction with habitat type (type II Anova implemented using the *Anova* function, *car* R package; Fox and Weisberg 2019). As a result, we obtained a 'most parsimonious model' including all predictors (main effects for the predictors involved in the statistical interaction), plus the terms associated with statistically significant interactions. Then, we compared the full model against both the most parsimonious and an intercept-only model using the Akaike Information Criterion (AIC, Burnham and Anderson 2004) and selected as best-fitting the one with the lowest AIC.

Given the low number of plots belonging to the sand beach drift lines (EUNIS N12), we aggregated and analysed data of this habitat type together with shifting coastal dunes (N14). This allowed increasing precision in the estimation of regression parameters, as analysing sand beach drift lines alone would have resulted in high variance coefficients associated with this habitat type. By aggregating data for these two habitat types (N12+N14, hereafter referred to as 'shifting dunes'), we assumed they were equally affected by natural and anthropogenic predictors, which is a reasonable assumption given that they are intermingled along the coastal zonation and at a similar distance from the shoreline, and therefore are subject to the same intensity of natural and anthropogenic pressures.

### 2.5.2. *Analysis of the interplay between natural and anthropogenic factors through path analysis*

To investigate the complex interplay between natural factors, anthropogenic activities, and coastal erosion in determining plant diversity patterns we used piecewise structural equation modelling.

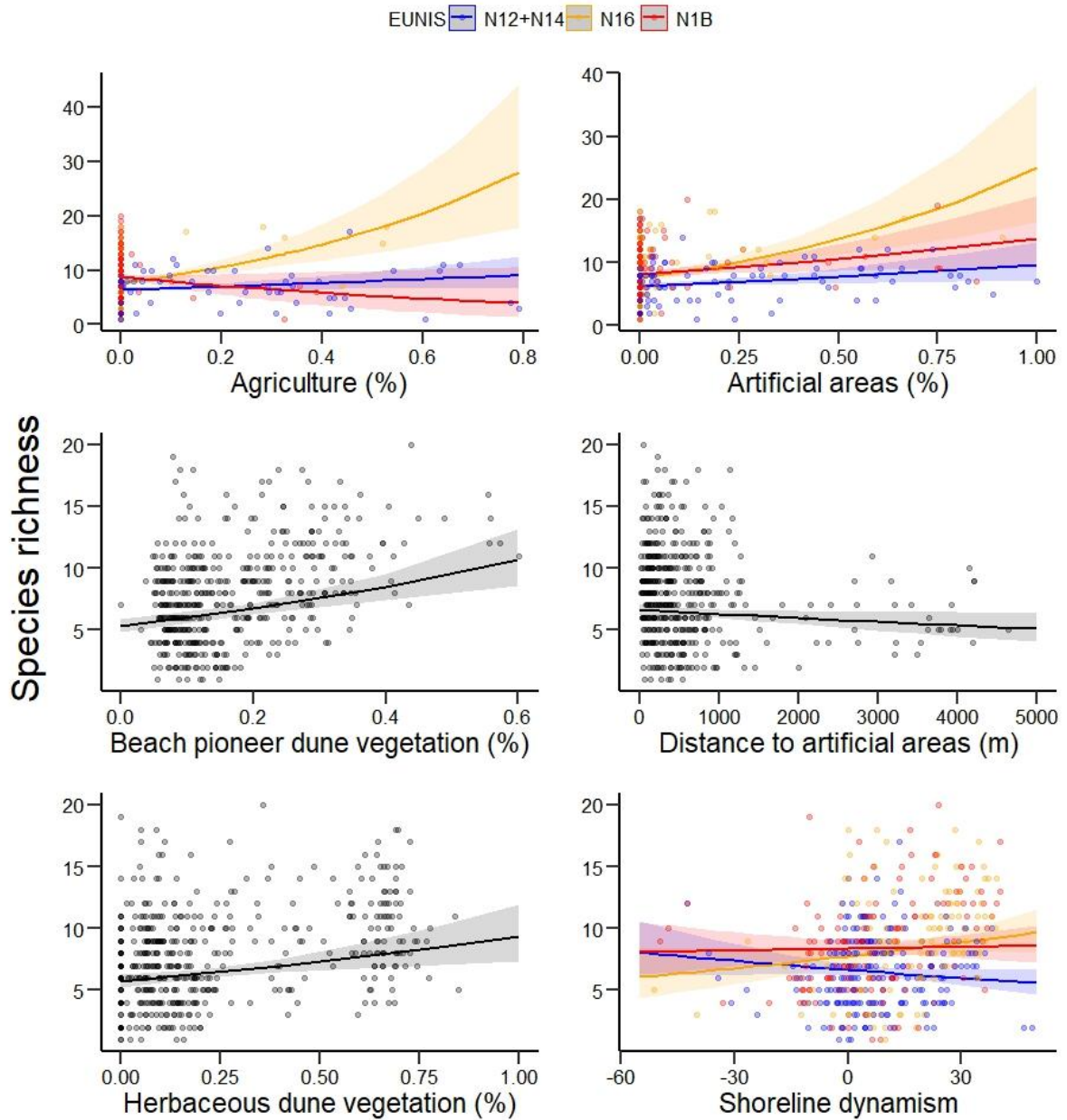
Relying on existing literature on the relationship between anthropogenic and natural factors, shoreline dynamism and coastal vegetation in Mediterranean dunes, we formulated a meta-model representing our assumed network of relationships among the former components (see Supplementary Information, Appendix1, Fig. S1 for a graphical representation of the meta-model). Specifically, we assumed that artificial land cover classes (related to urbanisation and agriculture) affected landscape diversity and shoreline dynamism (e.g. by favouring fragmentation and coastal erosion, respectively). In turn, we expected both the configuration of anthropogenic classes, landscape diversity and shoreline dynamism to affect the area covered by the three land cover classes associated with the dune habitats (i.e. beach pioneer dune vegetation, herbaceous dune vegetation, and woody dune vegetation). Finally, we assumed that each of the response variables used in 2.5.1. (species richness, and proportion of typical and ruderal species) was influenced by landscape diversity and shoreline dynamism *via* the area covered by the dune habitats. Piecewise structural equation models (SEMs) were fitted using the R package *piecewiseSEM* (Lefcheck 2016). To validate the SEMs, missing paths (i.e. paths not originally included in the meta-model) were assessed and included if considered causal, or otherwise left to covary. Model fit was evaluated using the Fisher's C statistic. Specifically, the meta-model, updated by the missing paths, was considered as adequately fitting the data if the test associated with Fisher's C statistic was not statistically significant (i.e.  $p > 0.05$ ).

### 3. Results

#### 3.1. *Species richness*

The best fitting model for species richness explained 35% (adjusted R-squared) of the overall variability in the response (Fig. 2; Supplementary Information, Appendix1, Table S5). Species richness increased with the increasing proportion of area covered by beach pioneer dune vegetation (z-value = 4.92, p-value < 0.001) and herbaceous dune vegetation (z-value = 3.17, p-value < 0.01) in all habitat types. The increasing proportion of agricultural areas had a positive effect on the species richness of coastal stable dune grasslands habitat (EUNIS N16), but a negative effect on the species richness of coastal dune shrubs habitat (N1B). In all habitat types, species richness increased with the proportion of artificial areas, with a more marked increment in coastal stable dune grasslands habitat. On the contrary, we observed an overall decrease in species richness at increasing distances from artificial facilities (z-value = -2.07, p-value < 0.05). Finally, we observed an increase in species richness of coastal stable dune grasslands and shrubs under coastal accretion, while species richness of shifting dunes (N12+N14) increased under erosion.





**Fig. 2.** Prediction plots of the model for species richness. Percentage ‘%’ represents the proportion of area covered by the different land cover classes within the rectangular buffer. Bands represent 95% confidence intervals of the means. EUNIS habitat types codes: sand beach drift lines and shifting coastal dunes (N12+N14), coastal stable dune grasslands (N16), and coastal dune shrubs (N1B). For detailed information, see Supplementary Information, Appendix1, Table S5, Summary of the model for species richness.

### 3.2. Proportion of typical and ruderal species

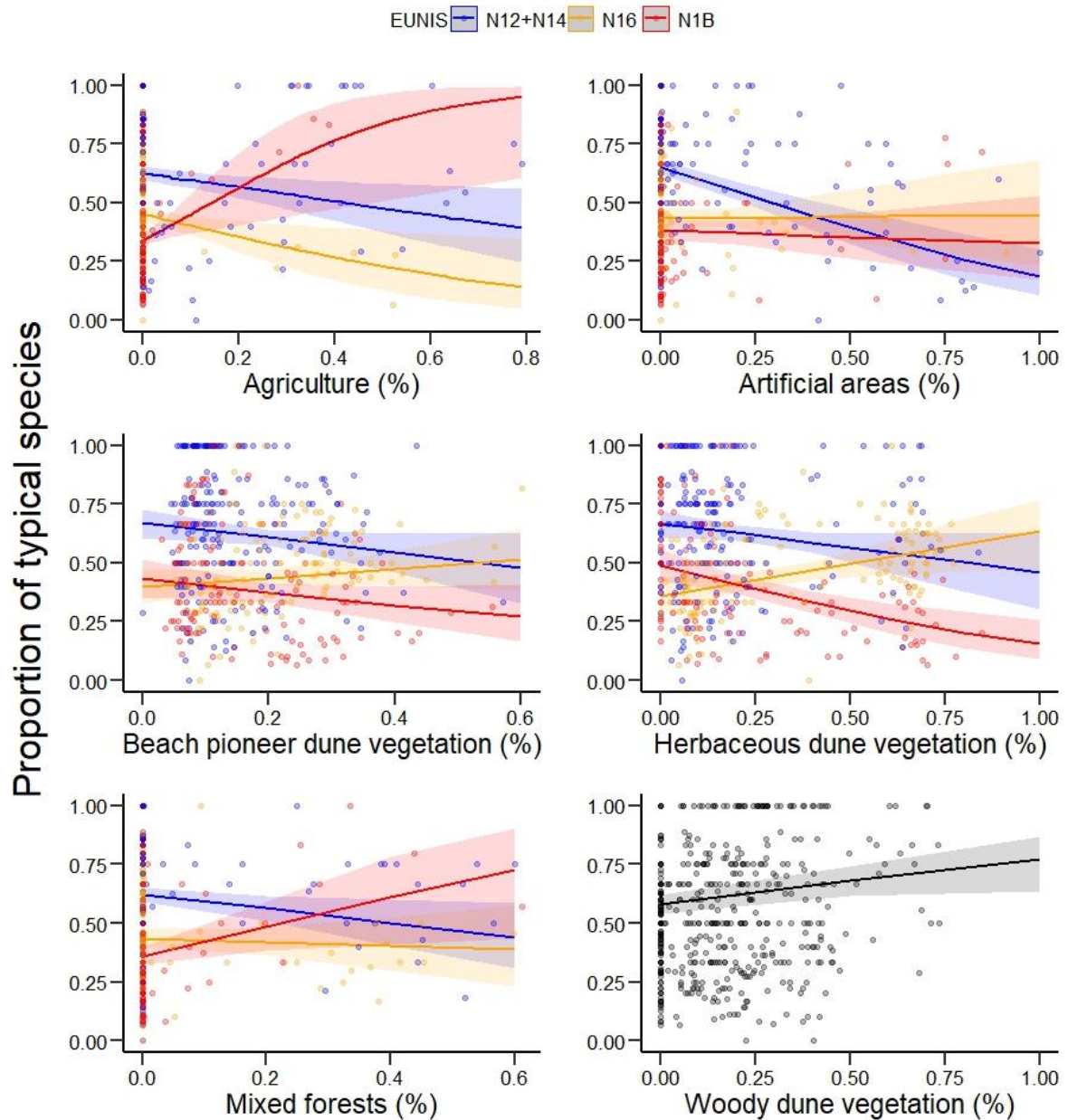
#### 3.2.1. Typical species

The best fitting model for the proportion of typical species explained 31% (adjusted R-squared) of the total variance (Fig. 3; Supplementary Information, Appendix1, Table S6).

In areas with high coverage of beach pioneer dune vegetation and herbaceous dune vegetation, the proportion of typical species was lower in shifting dunes and coastal dune shrubs habitats (EUNIS N12+N14, N1B), and higher in coastal stable dune grasslands (N16). The proportion

of typical species also increased at an increasing proportion of area covered by woody dune vegetation in all habitat types.

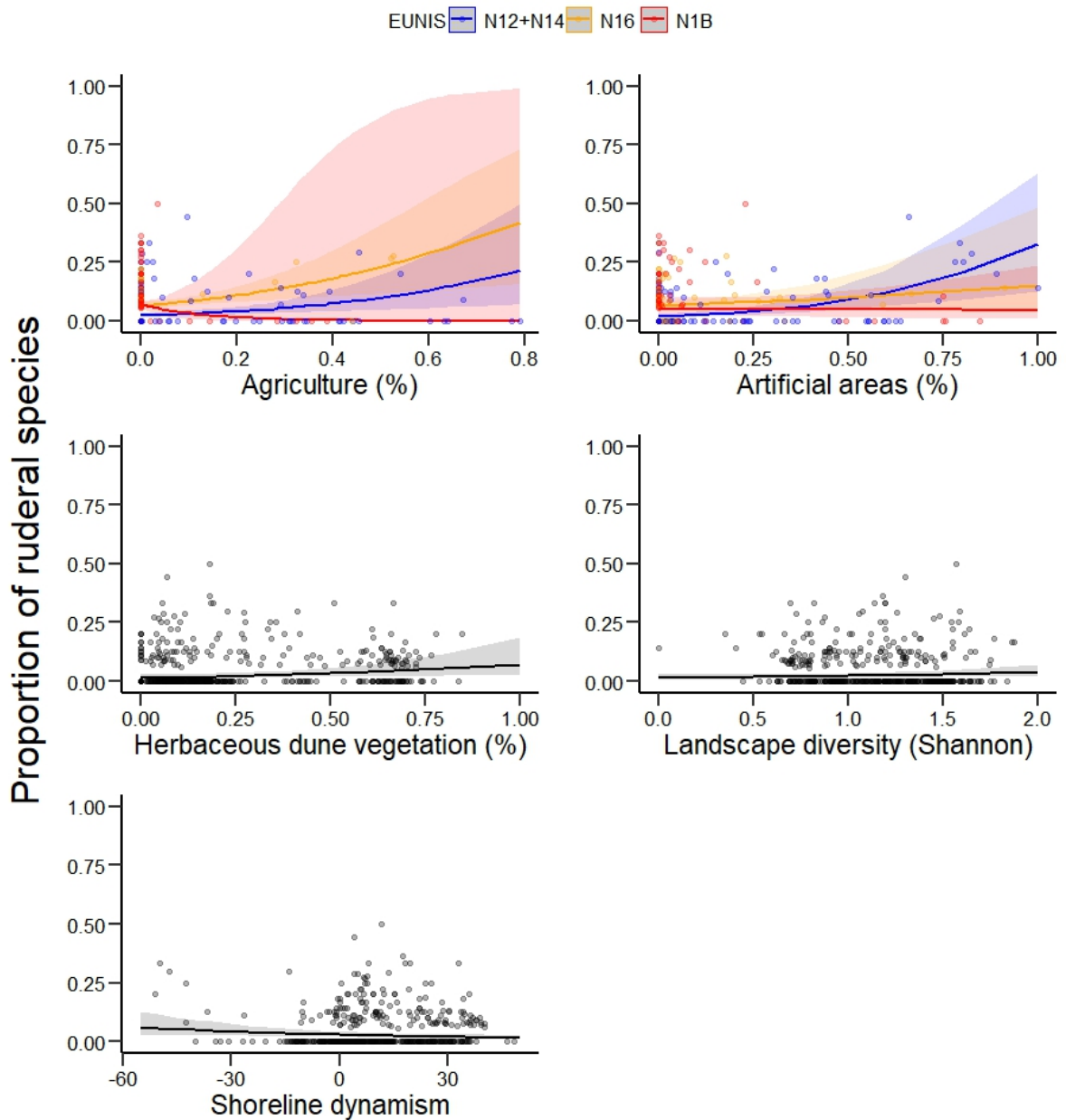
Results evidenced that the proportion of typical species of all habitat types, except for coastal dune shrubs (EUNIS N1B), decreased in areas with large cover of agricultural fields and mixed forests. Also, the proportion of typical species in shifting dunes habitat (N12+N14) was negatively correlated with the proportion of artificial land cover, meaning that the chance of finding species typical of these habitats decreased in highly urbanised locations.



**Fig. 3** Prediction plots of the model for the proportion of typical species. Percentage '%' represents the proportion of area covered by different land cover classes within the rectangular buffer. Bands represent 95% confidence intervals for the means. EUNIS habitat types codes: sand beach drift lines and shifting coastal dunes (N12+N14), coastal stable dune grasslands (N16), and coastal dune shrubs (N1B). For detailed information, see Supplementary Information, Appendix1, Table S6, Summary of the model for proportion of typical and ruderal species.

### 3.2.2. Ruderal species

The best fitting model explained 19% (adjusted R-squared) of the total variance. An increase in the proportion of area covered by herbaceous dune vegetation was associated with a weak increase in ruderal species in all habitat types (z-value = 2.20, p-value = < 0.05). Also, we found that the proportion of ruderal species of all habitat types increased at increasing landscape diversity (z-value = 1.98, p-value = < 0.05) and decreased under coastal accretion (z-value = -2.35, p-value < 0.05). In shifting dunes and coastal stable dune grasslands (EUNIS N12+N14, N16), the proportion of ruderal species increased with increasing proportion of agricultural and artificial areas (z-value = 3.42, p-value = < 0.001 and z-value = 4.35, p-value = < 0.001, respectively) (Fig. 4; Supplementary Information, Appendix1, Table S6)).



**Fig. 4** Prediction plots of the model for the proportion of ruderal species. Percentage ‘%’ represents the proportion of area covered by different land cover classes within the rectangular buffer. Bands

represent 95% confidence intervals for the means. EUNIS habitat types codes: sand beach drift lines and shifting coastal dunes (N12+N14), coastal stable dune grasslands (N16), and coastal dune shrubs (N1B). For detailed information, see Supplementary Information, Appendix1, Table S6, Summary of the model for proportion of typical and ruderal species.

### 3.3. Piecewise structural equation models

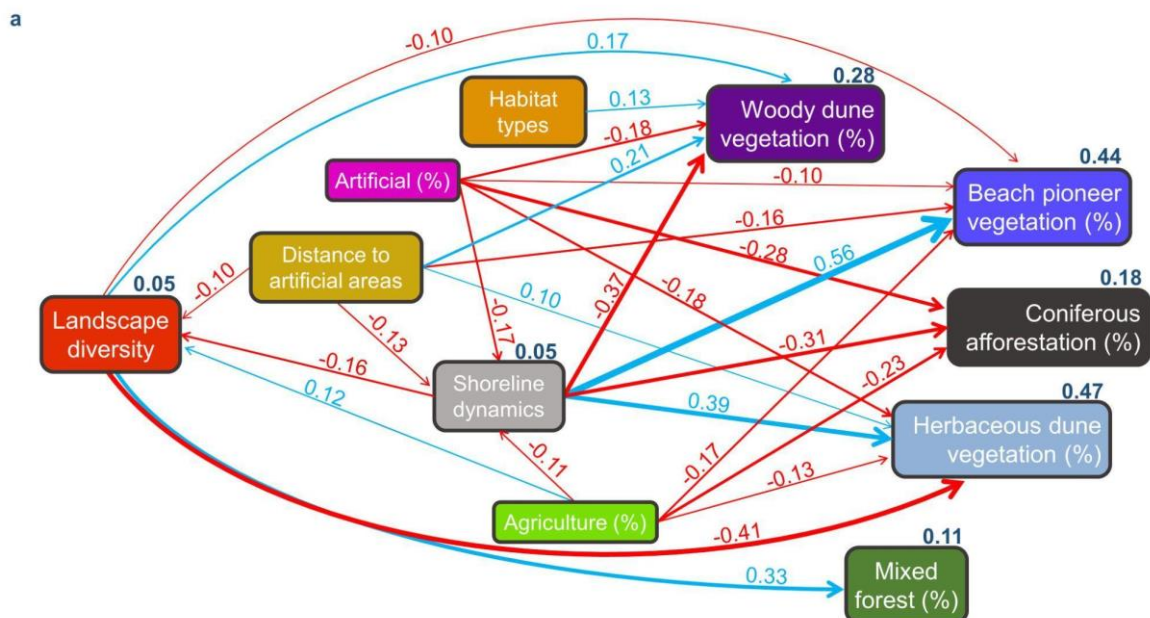
Our original meta-model, updated with pathways initially excluded, appeared to adequately fit the data: species richness (Fisher's C = 10.505, p-value = 0.23).

We observed that a high proportion of artificial areas corresponded with a lower proportion of all land cover classes related to natural vegetation (Fig. 5a). Similarly, an increasing cover of agricultural areas was linked to a decrease in the proportion of beach pioneer vegetation, herbaceous dune vegetation and coniferous afforestation. In addition to reducing the cover of classes associated with coastal natural vegetation, anthropogenic areas seemed to be associated with stronger erosion (Fig. 5a).

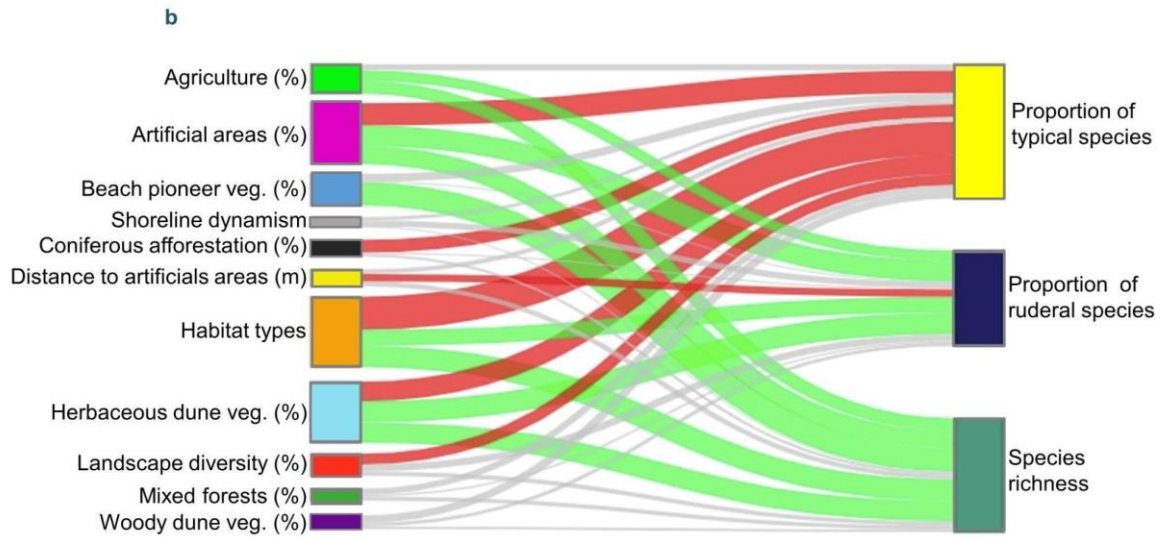
More generally, shoreline dynamism indirectly affected species richness and the proportion of typical and ruderal species through its influence on coastal natural vegetation (Fig. 5a,b). In particular, accretion was positively associated with the proportion of beach pioneer vegetation and herbaceous dune vegetation, while erosion correlated with increased woody dune vegetation and coniferous afforestation (Fig. 5a).

Species richness, in turn, were favoured in areas with greater cover of beach pioneer vegetation and herbaceous dune vegetation, whereas typical species were less likely to be found in areas with a larger cover of coniferous afforestation and herbaceous dune vegetation.

On the other hand, ruderal species were favoured by the increasing cover of agricultural and artificial areas, which, on the contrary, had a direct, negative effect on typical species. Although, the proportion of ruderal species decreased at increasing distances from human facilities.







**Fig. 5** Results of the piecewise structural equation models.

Panel a: piecewise structural equation model representing the interplay among natural and anthropogenic factors affecting species richness, the proportion of typical and of ruderal species. Note that the network of pathways reported in panel a is the same for all response variables (i.e. for species richness, typical and ruderal species), and it is therefore reported only once. Blue and red arrows represent positive and negative associations, respectively. Standardised coefficients are reported on top of arrows, while R-squared values are reported on top of boxes for endogenous variables. Panel b: associations between variables displayed in panel a and the three response variables. Green and red flows represent (statistically significant) positive and negative associations, respectively. Grey flows indicate non statistically significant relationships. The size of arrows (panel a) and flows (panel b) is proportional to the value of the corresponding standardised coefficients. Veg.: vegetation.

#### 4. Discussion

We found that the association between coastal plant communities and natural and anthropogenic factors changed across habitat types. Importantly, analysing typical and ruderal species revealed that these two guilds respond differently to anthropogenic disturbance. In this regard, we observed that agriculture and urbanisation favoured ruderal species at the expenses of typical species in sand beach drift lines and shifting dunes, which are the most important habitats for the eco-morphodynamism of coastal dunes (Duarte et al. 2013; Malavasi et al. 2021). Interestingly, this pattern did not come out clearly when analysing species richness, which highlights the importance of investigating different plant guilds to get a more comprehensive understanding of how plant diversity responds to natural and anthropogenic factors in coastal dunes. Finally, piecewise structural equation models highlighted shoreline dynamism and, more specifically, coastal erosion as an indirect determinant of plant diversity patterns in coastal dune ecosystems.

##### 4.1 *Habitat-specific effect of natural and anthropogenic factors on plant diversity*

The response of dune plant communities to natural and anthropogenic factors was habitat-specific, i.e. it varied along the coastal zonation. This aligns with the phenomenon of coastal squeezing, which has been described and reported in previous studies on dune systems worldwide (Ligthow et al. 2009; Lansu et al. 2024).

Tourism (Keirbiriou et al. 2008; Calvão et al. 2013) and coastal erosion (Keijsers et al. 2015; Bazzichetto et al. 2020) exert their strongest impact on the foredune communities, through dune reshaping, flattening (Nordstrom 2021), and heavy trampling (Farris et al. 2013; Šilc et al. 2017). Further inland, urbanisation and agriculture encroach on coastal dune shrubs habitats, gradually reducing their extent (Kemper et al. 1999; Defeo et al. 2009; Malavasi et al. 2013).

#### 4.2 *The multiple faces of species richness*

Somewhat surprisingly, we found that species richness increased under very different environmental conditions. On the one hand, there was a positive relationship between species richness and the relative area covered by natural coastal habitats, which is in line with the expectation that species richness is higher in well-preserved coastal dunes (García-Mora et al. 2000; Carboni et al. 2009; Sperandii et al. 2021). On the other hand, regardless of the habitat type, species richness also increased with urbanisation and high cover of agricultural fields, as also found by Aguilera et al. (2022) and Amorim et al. (2023) in, respectively, Chilean and Brazilian dune systems. However, analysing separate plant guilds revealed that the proportion of typical species decreased under high anthropogenic disturbance, while the proportion of ruderal species increased. This suggests that focusing solely on species richness can lead to misleading conclusions on the effect of human-related activities on coastal plant diversity. Indeed, high species richness could be associated with either well-preserved coastal habitats under low anthropogenic disturbance, or communities colonised by ruderal species under strong disturbance. For this reason, we warn against focusing on species richness alone to estimate the influence of anthropogenic disturbance on dune plant diversity. In this regard, our findings align with recent macroecology studies highlighting that, although human activities negatively impact biodiversity, species richness often fails to capture these effects, and may provide a sub-optimal measure of biodiversity change under anthropogenic pressure (Vellend 2017; Blowes et al 2019).

#### 4.3 *Further insights from typical and ruderal species*

We found that the proportion of typical species in shifting dunes and coastal stable dune grasslands decreased in densely urbanised areas or areas subject to agricultural activities (Malavasi et al. 2016). Specifically for shifting dunes, typical species are most commonly constituted by perennial rhizomatous geophytes characterised by relatively conservative strategies (e.g., slow-growing rates), such as *Calamagrostis arenaria* subsp. *arundinacea*, *Sporobolus pungens* and *Thinopyrum junceum*. These species are penalised under low sand burial and high landscape fragmentation, both conditions favoured by human activities (Maun et al. 2009; Farris et al. 2013). Moving inland, we found that typical species of coastal dune shrubs were most abundant in areas with a high cover of mixed forests. These species (e.g., *Juniperus oxycedrus* and *J. phoenicea*) can only resist moderate disturbance, and therefore colonise the inner sectors of the coastal zonation, with milder environmental conditions. Previous studies highlighted that well-developed woody dune vegetation sectors and coastal mixed forests are generally associated with an equally well-preserved coastal zonation, and this usually happens under low urbanisation (Malavasi et al. 2013, 2018; Salgado et al. 2022).

In areas with large patches of beach pioneer and herbaceous dune vegetation, we observed a lower proportion of typical species of shifting dunes and a higher proportion of typical species of dune grasslands. In this regard, although we did not detect a direct effect of shoreline dynamism on typical species, we notice that most of large foredune patches occurred in areas that underwent coastal accretion. Typical species of the foredune can cope with sand burial. Yet, an above-average input of sediment may benefit only few of them (e.g. *Thinopyrum junceum* and *Calamagrostis arenaria* subsp. *arundinacea*), while constituting a perturbation for the others (Bazzichetto et al. 2020; see also Maun and Perumal 1999). Concerning typical species of coastal dune grasslands,

their proportion may increase in prograding coast due to the lower effect of sea-related environmental stress (Bazzichetto et al. 2020).

Concerning ruderal species, their presence (in all habitat types) seemed to be favoured by anthropogenic activities. Among the most common ruderal species, we found synanthropic plants such as *Anisantha sterilis*, *Cerastium glomeratum* and *Lysimachia arvensis*. Ruderal species usually colonise agricultural fields and areas subject to high anthropogenic disturbance (Malavasi et al. 2016; Rendeková et al. 2017). Their potential spread from agricultural fields into neighbouring coastal habitats could explain the greater species richness (and lower proportion of typical species) which we found in stable dune grasslands in close proximity to large agricultural areas. A similar phenomenon was observed in plant invasion: agricultural fields (abandoned or still in use) serve as pools of alien species, which spread into adjacent natural habitats (Vilà and Ibáñez 2011). A larger proportion of ruderal species in coastal habitats is particularly worrying, as they do not have the same functional adaptations of typical species to the stressful environmental conditions of coastal dunes (e.g. succulent leaves, leaf rolling, and hairy leaves to respond to the high salt concentration; growth stimulation by sand burial). As a result, the replacement of typical species by ruderal species may, in the long-term, compromise the whole process of dune formation and maintenance (Acosta et al. 2007, Hesp 2002).

We observed that the proportion of ruderal species also increased under high landscape diversity, is related to habitat fragmentation and loss (Nagendra 2002; Joshi et al. 2006).

#### 4.4 *Complex interplay among the factors affecting dune vegetation*

Structural equation models evidenced that shoreline dynamism and anthropogenic activities are important drivers of plant diversity patterns in coastal dunes (Norstrom et al. 2002; Lansu et al. 2023). As expected, we found that coastal erosion was stronger in areas with high cover of artificial areas, confirming that human activities can exacerbate erosion. Interestingly, shoreline dynamism affected dune vegetation only indirectly by influencing the extent of land cover classes linked to natural habitats. On one hand, coastal accretion corresponded to larger patches of foredune classes (beach pioneer and herbaceous dune vegetation), which in turn promoted species richness and ruderal plants. On the other hand, coastal sectors undergoing erosion were linked to larger patches of coniferous afforestation and a smaller proportion of typical species. At the same time, typical species were more likely to be found in areas with low herbaceous dune vegetation, which also occurred under erosion. Our findings thus suggest that shoreline dynamism is part of an intricate network of relationships, and its mediating effect on dune vegetation cannot be fully understood without accounting for the simultaneous effect of anthropogenic activities. We note, however, that the complexity of the pathways assumed by our meta-model makes it difficult to extend our results to coastal sectors that differ significantly from our study system (i.e., non-Mediterranean dunes).

In the last decades, conifer afforestation has gained high ecological, recreational, and landscape value (Mazza et al. 2011), but this has promoted an increase in anthropogenic pressure and its impact on dune habitats (Bonari et al. 2017). The strengthening in trampling can lead to soil compaction, thereby creating an unfavourable environment for plant species of the embryonic and mobile dunes, which are favoured by loose sandy substrates (Maun 2009). The naturalistic valorisation of conifer afforestation has thus possibly turned to a further threat for the preservation of the dune system.

In conclusion, our results highlight that, in ecosystems characterised by strong environmental filters and to high anthropogenic disturbance such as coastal dunes, species richness *per se* may not be a valid measure of the impact of human-related activities on plant community composition. In this regard, we stress the importance of considering different facets of plant diversity (i.e. the proportion of typical and ruderal species) to avoid achieving misleading conclusions when focusing solely on species richness.

Another key aspect emerging from our study is that anthropogenic activities favour ruderal over typical species. We warn that this will have negative consequences on the maintenance of the coastal eco-morphodynamism, which underpins the multiple services provided by coastal ecosystems.

## 5. References

Acosta ATR, Blasi C, Stanisci A (2000) Spatial connectivity and boundary patterns in coastal dune vegetation in the Circeo National Park, Central Italy. *J Veg Sci* 11: 149-154. <https://doi.org/10.2307/3236787>

Acosta ATR, Carranza ML, Izzi CF (2005) Combining land cover mapping of coastal dunes with vegetation analysis. *Appl Veg Sci* 8(2): 133-138. <https://doi.org/10.1111/j.1654-109X.2005.tb00638.x>

Acosta ATR, Ercole S, Stanisci A, Blasi C (2006) Sandy coastal ecosystems and effects of disturbance in central Italy. *J Coast Res* 39: 985-989.

Acosta A, Ercole S, Stanisci A, de Patta Pillar V, Blasi C (2007) Coastal vegetation zonation and dune morphology in some Mediterranean ecosystems. *Journal of Coastal Research* 1518-1524. <https://www.jstor.org/stable/30138552>

Acosta ATR, Carranza ML, Izzi CF (2009) Are there habitats that contribute best to plant species diversity in coastal dunes? *Biodivers Conserv* 18(4): 1087-1098. <https://doi.org/10.1007/s10531-008-9454-9>

Aguilera MA, Pacheco S, Manzur T (2022) Human-derived effects and failure in management drive coastal urban foredune degradation and novel vegetation structure. *Journal of Environmental Management* 311: 114843. <https://doi.org/10.1016/j.jenvman.2022.114843>

Amorim IFF, Lima PB, Santos-Filho FS, de Almeida Jr. EB (2023) Diversity and richness of the herbaceous plants on urbanized and non-urbanized dunes on the Brazilian Amazonian coast. *Urban Ecosyst* 26: 447–457. <https://doi.org/10.1007/s11252-023-01341-z>

Angiolini C, Bonari G, Landi M (2018) Focal plant species and soil factors in Mediterranean coastal dunes: an undisclosed liaison? *Estuar Coast Shelf Sci* 211: 248-258. <https://doi.org/10.1016/j.ecss.2017.06.001>

Antonioli F, Anzidei M, Amorosi A, Presti VL, Mastronuzzi G, Deiana G, De Falco G, Fontana A, Fontolan G, Lisco S, Marsico A, Moretti M, Orrù PE, Sannino GM, Serpelloni E, Vecchio A (2017) Sea-level rise and potential drowning of the Italian coastal plains: Flooding risk scenarios for 2100. *Quat Sci Rev* 158: 29-43. <https://doi.org/10.1016/j.quascirev.2016.12.021>

Antonioli F, De Falco G, Lo Presti V, Moretti L, Scardino G, Anzidei M, Bonaldo D, Carniel S, Leoni G, Furlani S, Marsico A, Petitta M, X Randazzo G, Scicchitano G, Mastronuzzi G (2020) Relative sea-level rise and potential submersion risk for 2100 on 16 coastal plains of the Mediterranean sea. *Water* 12(8): 2173. <https://doi.org/10.3390/w12082173>

Barbier EB, Hacker SD, Kennedy C, Koch EW, Stier AC, Silliman BR (2011) The value of estuarine and coastal ecosystem services. *Ecol Monogr* 81(2): 169-193. <https://doi.org/10.1890/10-1510.1>

Bartolucci F, Peruzzi L, Galasso G, Albano A, Alessandrini A, Ardenghi NMG, Astuti G, Bacchetta G, Ballelli S, Banfi E, Barberis G, Bernardo L, Bouvet D, Bovio M, Cecchi L, Di Pietro R, Domina G,



Fascetti S, Fenu G, Festi F, Foggi B, Gallo L, Gottschlich G, Gubellini L, Iamónico D, Iberite M, Jiménez-Mejías P, Lattanzi E, Marchetti D, Martinetto E, Masin RR, Medagli P, Passalacqua NG, Peccenini S, Pennesi R, Pierini B, Poldini L, Prosser F, Raimondo FM, Roma-Marzio F, Rosati L, Santangelo A, Scoppola A, Scortegagna S, Selvaggi A, Selvi F, Soldano A, Stinca A, Wagensommer RP, Wilhelm T, Conti F (2018) An updated checklist of the vascular flora native to Italy. *Plant Biosyst* 152(2): 179-303. <https://doi.org/10.1080/11263504.2017.1419996>

Basnou C, Iguzquiza J, Pino J (2015) Examining the role of landscape structure and dynamics in alien plant invasion from urban Mediterranean coastal habitats. *Landsc Urban Plan* 136: 156-64. <https://doi.org/10.1016/j.landurbplan.2014.12.001>

Bazzichetto M, Malavasi M, Barták V, Acosta ATR, Moudrý V, Carranza ML (2018) Modeling plant invasion on Mediterranean coastal landscapes: An integrative approach using remotely sensed data. *Landsc Urban Plan* 171: 98-106. <https://doi.org/10.1016/j.landurbplan.2017.11.006>

Bazzichetto M, Sperandii MG, Malavasi M, Carranza ML, Acosta ATR (2020) Disentangling the effect of coastal erosion and accretion on plant communities of Mediterranean dune ecosystems. *Estuar Coastal Shelf Sci* 241: 106758. <https://doi.org/10.1016/j.ecss.2020.106758>

Biondi E, Blasi C (2015) *Prodromo della vegetazione d'Italia. Check-list tassonomica aggiornata di classi, ordini e alleanze presenti in Italia.*

Bertacchi A, Zuffi MAL, Lombardi T (2016) Foredune psammophilous communities and coastal erosion in a stretch of the Ligurian sea (Tuscany, Italy). *Rendiconti Lincei* 27(4): 639-651. <https://doi.org/10.1007/s12210-016-0543-5>

Biondi E, Blasi C, Burrascano S, Casavecchia S, Copiz R, Del Vico E, Galdenzi D, Gigante D, Lasen C, Spampinato G, Venanzoni R, Zivkovic L (2009) Italian interpretation manual of the 92/43/EEC directive habitats. Società botanica italiana. Ministero dell'Ambiente e della Tutela del Territorio e del Mare. DPN. <http://vnr.unipg.it/habitat>

Biondi E, Casavecchia S, Pesaresi S (2012a) Nitrophilous and ruderal species as indicators of climate change. Case study from the Italian Adriatic coast. *Plant Biosyst* 146(1): 134-142. <http://dx.doi.org/10.1080/11263504.2012.672342>

Biondi E, Gubellini L, Pinzi M, Casavecchia S (2012b) The vascular flora of Conero Regional Nature Park (Marche, Central Italy). *Flora Mediterr* 22: 67-16. <https://doi.org/10.7320/FIMedit22.067>

Blowes SA, Supp SR, Antão LH, Bates A, Bruehlheide H, Chase JM, Moyes F, Magurran A, McGill B, Myers-Smith IH, Winter M, Bjorkman AD, Bowler DE, Byrnes JEK, Gonzalez A, Hines J, Isbell F, Jones HP, Navarro LM, Thompson PL, Vellend M, Waldock C, Dornelas M (2019) The geography of biodiversity change in marine and terrestrial assemblages. *Science* 366(6463): 339-345. <http://dx.doi.org/10.1126/science.aaw1620>

Bonari G, Acosta AT, Angiolini C (2017) Mediterranean coastal pine forest stands: understory distinctiveness or not? *Forest Ecol Manage* 391: 19-28.

Bonari G, Fantinato E, Lazzaro L, Sperandii MG, Acosta ATR, Allegranza M, Assini S, Caccianiga M, Di Cecco V, Frattaroli A, Gigante D, Riviaccio G, Tese G, Valle B, Viciani D, Albani Rocchetti G, Angiolini C, Badalamenti E, Barberis D, Barcella M, Bazan G, Bertacchi A, Bolpagni R, Bonini F, Bricca A, Buffa G, Calbi M, Cannucci S, Cao Pinna L, Caria MC, Carli E, Cascone S, Casti M, Leone Cerabolini BE, Copiz R, Cutini M, De Simone L, De Toma A, Dalle Fratte M, Di Martino L, Di Pietro R,

Filesi L, Foggi B, Fortini P, Gennaio R, Gheza G, Lonati M, Mainetti A, Malavasi M, Marcenò C, Micheli C, Minuzzo C, Mugnai M, Musarella CM, Napoleone F, Nota G, Piga G, Pittarello M, Pozzi I, Praleskouskaya S, Rota F, Santini G, Sarmati S, Selvaggi A, Spampinato G, Stinca A, Pio Tozzi F, Venanzoni R, Villani M, Zanatta K, Zanzottera M, Bagella S (2021a) Shedding light on typical species: implications for habitat monitoring. *Plant Sociol* 58(1): 157-166. <https://doi.org/10.3897/pls2020581/08>

Bonari G, Padullés Cubino J, Sarmati S, Landi M, Zerbe S, Marcenò C, Landi M, Zerbe S, Marcenò C, Scoppola A, Angiolini C (2021b) Ecosystem state assessment after more than 100 years since planting for dune consolidation. *Restor Ecol* 29(7): e13435. <https://doi.org/10.1111/rec.13435>

Burnham K, Anderson D (2004) *Model selection and multi-model inference*. Second. Springer, New York.

Calvão T, Pessoa MF, Lidon FC (2013) Impact of human activities on coastal vegetation - A review. *Emirates Journal of Food and Agriculture* 25: 926–944. <https://10.9755/ejfa.v25i12.16730>

Carboni M, Carranza ML, Acosta A (2009) Assessing conservation status on coastal dunes: A multi-scale approach. *Landsc Urban Plan* 91(1):17-25. <https://doi.org/10.1016/j.landurbplan.2008.11.004>

Carboni M, Thuiller W, Izzi F, Acosta ATR (2010) Disentangling the relative effects of environmental versus human factors on the abundance of native and alien plant species in Mediterranean sandy shores. *Divers Distrib* 16(4): 537-546. <https://doi.org/10.1111/j.1472-4642.2010.00677.x>

Carranza ML, Acosta ATR, Stanisci A, Pirone G, Ciaschetti G (2008) Ecosystem classification for EU habitat distribution assessment in sandy coastal environments: An application in central Italy. *Environ Monit Assess* 140(1): 99-107. <http://dx.doi.org/10.1007/s10661-007-9851-7>

Chytrý M, Tichý L, Hennekens, SM, Knollová I, Janssen JAM, Rodwell JS, et al. Schaminée JHJ (2020) EUNIS Habitat Classification: expert system, characteristic species combinations and distribution maps of European habitats. *Appl Veg Sci* 23: 648-675. <https://doi.org/10.1111/avsc.12519>

Ciccarelli D (2014) Mediterranean coastal sand dune vegetation: influence of natural and anthropogenic factors. *Environ Manag* 54 (2): 194-204. <https://doi.org/10.1007/s00267-014-0290-2>

Ciccarelli D (2015) Mediterranean coastal dune vegetation: are disturbance and stress the key selective forces that drive the psammophilous succession? *Estuar Coastal Shelf Sci* 165: 247-253. <https://doi.org/10.1016/j.ecss.2015.05.023>

Ciccarelli D, Bacaro G, Chiarucci A (2012) Coastline dune vegetation dynamics: evidence of no stability. *Folia Geobot* 47: 263-275. <https://doi.org/10.1007/s12224-011-9118-5>

D'Antraccoli M, Roma-Marzio F, Carta A, Landi S, Bedini G, Chiarucci A, Peruzzi L (2019) Drivers of floristic richness in the Mediterranean: a case study from Tuscany. *Biodivers Conserv* 28(6): 1411-1429. <https://doi.org/10.1007/s10531-019-01730-x>

Defeo O, McLachlan A, Schoeman DS, Schlacher TA, Dugan J, Jones A, Lastra M, Scapini F (2009) Threats to sandy beach ecosystems: a review. *Estuar Coastal Shelf Sci* 81: 1-12. <https://doi.org/10.1016/j.ecss.2008.09.022>

Del Vecchio S, Slaviero A, Fantinato E, Buffa G (2016) The use of plant community attributes to detect habitat quality in coastal environments. *AoB Plants* 8: plw040. <https://doi.org/10.1093/aobpla/plw040>

Del Vecchio S, Fantinato E, Janssen JAM, Bioret F, Acosta A, Prisco I, Tzonev R, Marcenò C, Rodwell J, Buffa G (2018) Biogeographic variability of coastal perennial grasslands at the European scale. *Applied Vegetation Science* 21(2): 312-321. <https://doi.org/10.1111/avsc.12356>

Dimitrakopoulos PG, Koukoulas S, Galanidis A, Delipetrou P, Gounaridis D, Touloumi K, Arianoutsou M (2017) Factors shaping alien plant species richness spatial patterns across Natura 2000 Special Areas of Conservation of Greece. *Sci Total Environ* 601: 461-468. <https://doi.org/10.1016/j.scitotenv.2017.05.220>

Duarte CM, Losada IJ, Hendriks IE, Mazarrasa I, Marbà N (2013) The role of coastal plant communities for climate change mitigation and adaptation. *Nature climate change* 3(11): 961-968.

Dugan J, Hubbard DM (2010) Loss of coastal strand habitat in Southern California: the role of beach grooming. *Estuar Coasts* 33(1): 67-77. <https://doi.org/10.1007/s12237-009-9239-8>

Durán O, Moore LJ (2013) Vegetation controls on the maximum size of coastal dunes. *Proceedings of the National Academy of Sciences* 110(43): 17217-17222. <https://doi.org/10.1073/pnas.130758011>

Evans D, Arvela M (2011) Assessment and reporting under Article 17 of the Habitats Directive. Explanatory Notes & Guidelines for the period 2007-2012. European Commission, Brussels.

Farris E, Pisanu S, Ceccherelli G, Filigheddu R (2013) Human trampling effects on Mediterranean coastal dune plants. *Plant Biosystems-an International Journal Dealing with All Aspects of Plant Biology* 147(4): 1043-1051. <http://dx.doi.org/10.1080/11263504.2013.861540>

Feagin RA, Sherman DJ, Grant WE (2005) Coastal erosion, global sea-level rise, and the loss of sand dune plant habitats. *Frontiers in Ecology and the Environment* 3(7): 359-364. [https://doi.org/10.1890/1540-9295\(2005\)003\[0359:CEGSRA\]2.0.CO;2](https://doi.org/10.1890/1540-9295(2005)003[0359:CEGSRA]2.0.CO;2)

Feagin RA, Figlus J, Zinnert JC, Sigren J, Martínez ML, Silva R, Smith WK, Cox D, Young DR, Carter G (2015) Going with the flow or against the grain? The promise of vegetation for protecting beaches, dunes, and barrier islands from erosion. *Front Ecol Environ* 13: 203-210. <https://doi.org/10.1890/140218>

Forey E, Chapelet B, Vitasse Y, Tilquin M, Touzard B, Michalet R (2008) The relative importance of disturbance and environmental stress at local and regional scales in French coastal sand dunes. *J Veg Sci* 19(4): 493-502. <https://doi.org/10.3170/2008-8-18392>

Fox J, Weisberg S (2019). *An {R} Companion to Applied Regression, Third Edition*. Thousand Oaks CA: Sage. URL: <https://socialsciences.mcmaster.ca/jfox/Books/Companion/>

Fратиanni S, Acquotta F (2017) The Climate of Italy. In: Soldati M, Marchetti M (eds) *Landscapes and Landforms of Italy. World Geomorphological Landscapes*. Springer, Cham. [https://doi.org/10.1007/978-3-319-26194-2\\_4](https://doi.org/10.1007/978-3-319-26194-2_4)

Galasso G, Conti F, Peruzzi L, Ardenghi NMG, Banfi E, Celesti-Grapow L, Albano A, Alessandrini A, Bacchetta G, Ballelli S, Bandini Mazzanti M, Barberis G, Bernardo L, Blasi C, Bouvet D, Bovio M, Cecchi L, Del Guacchio E, Domina G, Fascetti S, Gallo L, Gubellini L, Guiggi A, Iamónico D, Iberite M, Jiménez-Mejías P, Lattanzi E, Marchetti D, Martinetto E, Masin RR, Medagli P, Passalacqua NG, Peccenini S, Pennesi R, Pierini B, Podda L, Poldini L, Prosser F, Raimondo FM, Roma-Marzio F, Rosati L, Santangelo A, Scoppola A, Scortegagna S, Selvaggi A, Selvi F, Soldano A, Stinca A, Wagensommer RP, Wilhelm T, Bartolucci F (2018) An updated checklist of the vascular flora alien to Italy. *Plant Biosyst* 152(3): 556-592. <https://doi.org/10.1080/11263504.2018.1441197>

García-Mora MR, Gallego-Fernández JB, García-Novo F (2000) Plant diversity as a suitable tool for coastal dune vulnerability assessment. *Journal of coastal research* 990-995. <https://www.jstor.org/stable/4300117>

GEOscopio (2022) <http://www502.regione.toscana.it/geoscopio/ortofoto.html> Accessed 30 Oct 2022.

Heslenfeld P, Jungerius PD, Klijn JA (2004) European coastal dunes: ecological values, threats, opportunities and policy development. In *Coastal dunes: ecology and conservation* (pp. 335-351). Berlin.

Hesp P (2002) Foredunes and blowouts: initiation, geomorphology and dynamics. *Geomorphology* 48(1-3): 245-268.

Janssen JAM, Rodwell JS, Criado MG, Arts GHP, Bijlsma RJ, Schaminee JHJ (2016) European Red List of Habitats. European Union.

Jones MLM, Sowerby A, Williams DL, Jones R (2008) Factors controlling soil development in sand dunes: evidence from a coastal dune soil chronosequence. *Plant and Soil* 307: 219-234. <https://doi.org/10.1007/s11104-008-9601-9>

Joshi PK, Lele N, Agarwal SP (2006) Entropy as an indicator of fragmented landscape. *Current Science* 91(3): 276-278.

Keijsers JGS, De Groot AV, Riksen MJPM (2015) Vegetation and sedimentation on coastal foredunes. *Geomorphology* 228: 723-734. <https://doi.org/10.1016/j.geomorph.2014.10.027>

Kemper J, Cowling RM, & Richardson DM (1999) Fragmentation of South African renosterveld shrublands: effects on plant community structure and conservation implications. *Biological Conservation* 90(2): 103-111. [https://doi.org/10.1016/S0006-3207\(99\)00021-X](https://doi.org/10.1016/S0006-3207(99)00021-X)

Kerbiriou C, Leviol I, Jiguet F, Julliard R (2008) The impact of human frequentation on coastal vegetation in a biosphere reserve. *Journal of environmental management* 88(4): 715-728. <https://doi.org/10.1016/j.jenvman.2007.03.034>

Lansu EM, Reijers VC, Höfer S, Luijendijk A, Rietkerk M, Wassen MJ, Lammerts EJ, van der Heide T (2024) A global analysis of how human infrastructure squeezes sandy coasts. *Nat Commun* 15: 432. <https://doi.org/10.1038/s41467-023-44659-0>

Lefcheck JS (2016) piecewiseSEM: Piecewise structural equation modelling in R for ecology, evolution, and systematics. *Methods Ecol Evol* 7: 573-579. <https://doi.org/10.1111/2041-210X.12512>

Lithgow D, Martínez ML, Gallego-Fernández JB, Silva R, Ramírez-Vargas DL (2019) Exploring the co-occurrence between coastal squeeze and coastal tourism in a changing climate and its consequences. *Tourism Management* 74: 43-54. <https://doi.org/10.1016/j.tourman.2019.02.005>

Maccherini S, Bacaro G, Tordoni E, Bertacchi A, Castagnini P, Foggi B, Gennai M, Mugnai M, Sarmati S, Angiolini C (2020) Enough is enough? Searching for the optimal sample size to monitor European habitats: A case study from coastal sand dunes. *Diversity* 12(4): 138. <https://doi.org/10.3390/d12040138>

Malavasi M, Santoro R, Cutini M, Acosta ATR, Carranza ML (2013) What has happened to coastal dunes in the last half century? A multitemporal coastal landscape analysis in Central Italy. *Landsc Urban Plan* 119: 54-63. <https://doi.org/10.1016/j.landurbplan.2013.06.012>

Malavasi M, Santoro R, Cutini M, Acosta ATR, Carranza ML (2016) The impact of human pressure on landscape patterns and plant species richness in Mediterranean coastal dunes. *Plant Biosyst* 150(1): 73-82. <https://doi.org/10.1080/11263504.2014.913730>

Malavasi M, Bartak V, Carranza ML, Simova P, Acosta ATR (2018) Landscape pattern and plant biodiversity in Mediterranean coastal dune ecosystems: Do habitat loss and fragmentation really matter? *J Biogeogr* 45(6): 1367-1377. <https://doi.org/10.1111/jbi.13215>

Malavasi M, Bazzichetto M, Komárek J, Moudrý V, Rocchini D, Bagella S, Acosta ATR, Carranza ML (2021) Unmanned aerial systems-based monitoring of the eco-geomorphology of coastal dunes through spectral Rao's Q. *Appl Veg Sci* 24(1): e12567. <https://doi.org/10.1111/avsc.12567>

Marcenò C, Guarino R, Loidi J, Herrera M, Isermann M, Knollová I, Tichý L, Tzonev RT, Acosta ATR, FitzPatrick Ú, Iakushenko D, Janssen JAM, Jiménez-Alfaro B, Kaçki Z, Keizer-Sedláková I, Kolomyichuk V, Rodwell JS, Schaminée JHJ, Šilc U, Chytrý M (2018) Classification of European and Mediterranean coastal dune vegetation. *Appl Veg Sci* 21(3): 533-559. <https://doi.org/10.1111/avsc.12379>.

Maun MA (2009) *The biology of coastal sand dunes*. Oxford University Press. <https://doi.org/10.1093/aob/mcp136>

Maun MA, Perumal J (1999) Zonation of vegetation on lacustrine coastal dunes: effects of burial by sand. *Ecol Lett* 2(1): 14-18. <https://doi.org/10.1046/j.1461-0248.1999.21048.x>

Mazza G, Amorini E, Cutini A, Manetti MC (2011) The influence of thinning on rainfall interception by *Pinus pinea* L. in Mediterranean coastal stands (Castel Fusano-Rome). *Ann For Sci* 68(8): 1323-1332.

Nagendra H (2002) Opposite trends in response for the Shannon and Simpson indices of landscape diversity. *Appl Geogr* 22(2): 175-186. [https://doi.org/10.1016/S0143-6228\(02\)00002-4](https://doi.org/10.1016/S0143-6228(02)00002-4)

Navarra JJ, Quintana-Ascencio PF (2012) Spatial pattern and composition of the Florida scrub seed bank and vegetation along an anthropogenic disturbance gradient. *Appl Veg Sci* 15: 349–358.

Nordstrom KF (2021) *Beach and dune restoration*. Cambridge University Press.

Pesaresi S, Biondi E, Casavecchia S (2017) Bioclimates of Italy. *J Maps* 13(2): 955-960. <https://doi.org/10.1080/17445647.2017.1413017>

Pignatti S, Menegoni P, Pietrosanti S (2005) Bioindicator values of vascular plants of the flora of Italy. *Braun-Blanquetia* 39: 3-95.

Portal to the Flora of Italy (2023) Version 2023.1. <https://dryades.units.it/floritaly>. Accessed 6 Feb 2024.

Pranzini E (2021) Pandemics and coastal erosion in Tuscany (Italy). *Ocean Coast Manag* 208: 105614. <https://doi.org/10.1016/j.ocecoaman.2021.105614>

Pranzini E, Wetzel L, Williams AT (2015) Aspects of coastal erosion and protection in Europe. *J Coast Conserv* 19(4): 445-459. <https://doi.org/10.1007/s11852-015-0399-3>

Pranzini E, Anfuso G, Cinelli I, Piccardi M, Vitale G (2018) Shore protection structures increase and evolution on the northern Tuscany coast (Italy): influence of tourism industry. *Water* 10(11): 1647. <https://doi.org/10.3390/w10111647>

Pranzini E, Cinelli I, Cipriani LE, Anfuso G (2020) An integrated coastal sediment management plan: The example of the Tuscany region (Italy). *J Mar Sci Eng* 8(1): 33. <https://doi.org/10.3390/jmse8010033>.

Prisco I, Acosta ATR, Ercole S (2012) An overview of the Italian coastal dune EU habitats. *Annali di Botanica* 2: 39-48. <https://doi.org/10.4462/annbotrm-9340>.

Prisco I, Stanisci A, Acosta ATR (2016) Mediterranean dunes on the go: Evidence from a short term study on coastal herbaceous vegetation. *Estuar Coastal Shelf Sci* 182: 40-46. <https://doi.org/10.1016/j.ecss.2016.09.012>

Prisco I, Berardi C, Acosta ATR (2017) Coastal dune vegetation in central Campania: an insight on the Natural Reserve "Foce Sele-Tanagro". *Plant Sociol* 54: 43-50. <https://doi.org/10.7338/pls2017542/05>

QGIS Development Team (2018) QGIS Geographic Information System. Open Source Geospatial Foundation Project. <http://qgis.osgeo.org>

Rendeková A, Mičieta K (2017) Changes in the representation of alien taxa in ruderal vegetation of an urban ecosystem over 50 years. A case study from Malacky city, Slovakia, Central Europe. *Urban Ecosyst* 20: 867–875

Rhymes J, Jones L, Lapworth DJ, White D, Fenner N, McDonald JE, Perkins TL (2015) Using chemical: microbial and fluorescence techniques to understand contaminant sources and pathways to wetlands in a conservation site. *Sci Total Environ* 511: 703-710. <https://doi.org/10.1016/j.scitotenv.2014.12.085>

Richerson PJ, Lum K (1980) Patterns of plant species diversity in California: relation to weather and topography. *Am Nat* 116:504-536. <https://www.jstor.org/stable/2460443>

Salgado K, Martínez ML, Álvarez-Molina LL, Hesp P, Equihua M, Mariño-Tapia I (2022) Impact of urbanization and landscape changes on the vegetation of coastal dunes along the Gulf of Mexico. *Écoscience* 29(2): 103-116. <https://doi.org/10.1080/11956860.2021.1934299>

Santoro R, Jucker T, Prisco I, Carboni M, Battisti C, Acosta ATR (2012) Effects of trampling limitation on coastal dune plant communities. *Environ Manag* 49: 534. <https://doi.org/10.1007/s00267-012-9809-6>

Sarmati S, Bonari G, Angiolini C (2019) Conservation status of Mediterranean coastal dune habitats: anthropogenic disturbance may hamper habitat assignment. *Rendiconti Lincei. Scienze Fisiche e Naturali* 30(3): 623-636. <https://doi.org/10.1007/s12210-019-00823-7>

Shannon CE (1948) A mathematical theory of communication. *The Bell system technical journal* 27(3): 379-423. <https://doi.org/10.1002/j.1538-7305.1948.tb01338.x>

Šilc, U., Caković, D., Kuzmič, F., & Stešević, D. (2017). Trampling impact on vegetation of embryonic and stabilised sand dunes in Montenegro. *Journal of Coastal Conservation*: 21, 15-21. <https://doi.org/10.1007/s11852-016-0468-2>

Sperandii MG, Bazzichetto M, Acosta ATR, Barták V, Malavasi M (2019) Multiple drivers of plant diversity in coastal dunes: a Mediterranean experience. *Sci Total Environ* 652: 1435-1444. <https://doi.org/10.1016/j.scitotenv.2018.10.299>

Sperandii MG, Barták V, Carboni M, Acosta ATR (2021) Getting the measure of the biodiversity crisis in Mediterranean coastal habitats. *Journal of Ecology* 109(3): 1224-1235. <https://doi.org/10.1111/1365-2745.13547>

Tzatzanis M, Wrבka T, Sauberer N (2003) Landscape and vegetation responses to human impact in sandy coasts of Western Crete, Greece. *J Nat Conserv* 11(3): 187-195. <https://doi.org/10.1078/1617-1381-00047>

Vellend M (2017) The biodiversity conservation paradox. *American Scientist* 105(2): 94-101. <https://doi.org/10.1511/2017.125.94>

Vilà M, Ibáñez I (2011) Plant invasions in the landscape. *Landscape ecology* 26: 461-472.

Vousdoukas MI, Ranasinghe R, Mentaschi L, Plomaritis TA, Athanasiou P, Luijendijk A, Feyen L (2020) Sandy coastlines under threat of erosion. *Nature climate change* 10(3): 260-263. <https://doi.org/10.1038/s41558-020-0697-0>

Venturi C, Campo L, Caparrini F, Castelli F (2014) The assessment of the water consumption at regional scale: an application in Tuscany, Central Italy. *European Water* 45(46): 3-23.

Yousefi Lalimi F, Silvestri S, Moore LJ, Marani M (2017) Coupled topographic and vegetation patterns in coastal dunes: Remote sensing observations and ecomorphodynamic implications. *J Geophys Res Biogeosci* 122(1): 119-130. <https://doi.org/10.1002/2016JG003540>

Zullo F, Paolinelli G, Fiordigigli V, Fiorini L, Romano B (2015) Urban development in Tuscany. Land uptake and landscapes changes. *TeMA Journal of Land Use Mob Environ* 8(2): 183-202.

### **Funding**

This study was supported by the Tuscany Region through the projects MonitoRare and Nat-NET. Manuele Bazzichetto and Marta Gaia Sperandii acknowledge funding from the European Union's Horizon Europe research and innovation programme under the Marie Skłodowska-Curie grant agreement No 101066324 and No 101090344.

This study received also funding from the European Union - Next-Generation EU - National Recovery and Resilience Plan (NRRP) – MISSION 4 COMPONENT 2, INVESTMENT N. 1.1, CALL PRIN 2022 D.D. 104 02-02-2022 – (Prioritisation of coastal areas for plant diversity conservation through a multidisciplinary approach- PRIORCOAST) CUP N. B53D23012040006

### **Conflict of interest**

The authors declare that they have no known competing financial interests or personal relationships that could have appeared to influence the work reported in this paper.

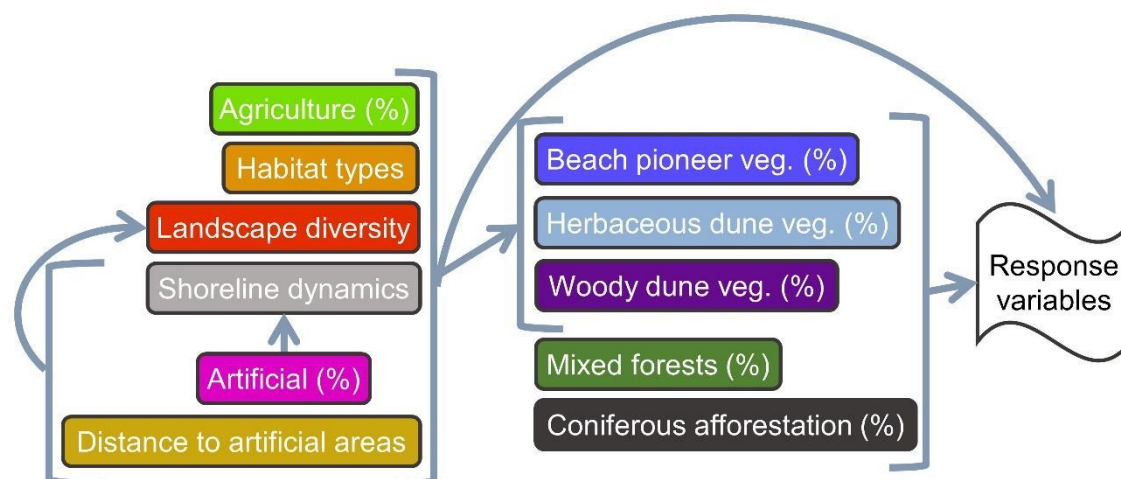
**Contributions**

Manuele Bazzichetto, Simona Sarmati, Claudia Angiolini and Simona Maccherini contributed to the study conception and design. Simona Sarmati, Claudia Angiolini, Andrea Bertacchi, Matilde Gennai, Bruno Foggi, Simona Maccherini, Daniele Viciani collected the vegetation data. Simona Sarmati analyzed the data with Manuele Bazzichetto, Marta Gaia Sperandii, Vojtěch Barták, Matilde Gennai, Gianmaria Bonari, Claudia Angiolini, and Daniele Viciani. Simona Sarmati, Manuele Bazzichetto, Marta Gaia Sperandii and Claudia Angiolini wrote the first draft of the manuscript. All authors commented on previous manuscript versions and read and approved the final version.



Supplementary Materials to Sarmati et al. - A complex interplay between natural and anthropogenic factors shapes plant diversity patterns in Mediterranean coastal dunes -. Landscape Ecology.

Appendix 1



**Fig. S1** Hypothesized meta-model used to analyse the complex interplay between landscape configuration and shoreline dynamism, and their effect on coastal dune plant diversity. Response variables included: species richness, proportion of typical species and proportion of ruderal species. Veg. = vegetation.

**Table S1. List of EUNIS habitat types**

List of EUNIS codes along with the corresponding habitat type(s) included in the Annex I of the Habitats Directive (92/43/EEC) and their related typical species (nomenclature follows Bartolucci et al. 2018). N = number of vegetation plots assigned to each EUNIS habitat types.

3-level EUNIS	Description	EU Habitats Directive (Annex I 92/43/EEC)	Typical species
N12 - Sand beach driftlines (N = 23)	Annual pioneer herbaceous formations typically found near the shoreline	1210 - Annual vegetation of drift lines (upper beach)	<i>Atriplex prostrata</i> , <i>Cakile maritima</i> subsp. <i>maritima</i> , <i>Euphorbia pepelis</i> , <i>Convolvulus soldanella</i> , <i>Matthiola sinuata</i> , <i>Polygonum maritimum</i> , <i>Salsola kali</i>

<p>N14 - Shifting coastal dunes (N = 185)</p>	<p>Mobile and semi-permanent dune systems including embryonic and shifting dunes</p>	<p>2110 - Embryonic shifting dunes (embryo dune) characterized by <i>Thinopyrum junceum</i> (= <i>Elymus farctus</i>)</p> <p>2120 - Shifting dunes along the shoreline with <i>Ammophila arenaria</i> (white dune)</p>	<p><i>Achillea maritima</i> subsp. <i>maritima</i>, <i>Anthemis maritima</i> subsp. <i>maritima</i>, <i>Calamagrostis arenaria</i> subsp. <i>arundinacea</i>, <i>Centaurea aplolepa</i>, <i>Cyperus capitatus</i>, <i>Echinophora spinosa</i>, <i>Thinopyrum junceum</i>, <i>Eryngium maritimum</i>, <i>Euphorbia paralias</i>, <i>Medicago marina</i>, <i>Ononis variegata</i>, <i>Solidago virgaurea</i> subsp. <i>litoralis</i>, <i>Sporobolus virginicus</i>, <i>Stachys maritima</i></p>
<p>N16 - Coastal stable dune grasslands (N = 130)</p>	<p>Perennial grasslands of the fixed and semifixed dunes and annual species-rich communities that colonize grasslands clearings</p>	<p>2210 - <i>Crucianellion maritimae</i> fixed and semifixed dunes dominated by <i>Crucianella maritima</i></p> <p>2230 - <i>Malcolmietalia</i> dune grasslands</p> <p>2240 - <i>Brachypodietalia</i> dune grasslands with annuals</p>	<p><i>Crucianella maritima</i>, <i>Cutandia maritima</i>, <i>Daucus pumilus</i>, <i>Festuca fasciculata</i> (= <i>Vulpia fasciculata</i>), <i>Helichrysum stoechas</i>, <i>Lagurus ovatus</i>, <i>Lomelosia rutifolia</i>, <i>Marcus-kochia ramosissima</i>, <i>Medicago littoralis</i>, <i>Pancratium maritimum</i>, <i>Phleum arenarium</i> subsp. <i>caesium</i>, <i>Seseli tortuosum</i>, <i>Silene canescens</i>, <i>Sonchus bulbosus</i> subsp. <i>bulbosus</i>, <i>Tuberaria guttata</i></p>
<p>N1B - Coastal dune shrubs (N = 136)</p>	<p>Stable dunes with <i>Juniperus</i> spp. communities or sclerophyllous shrubs</p>	<p>2250 - Coastal dunes with <i>Juniperus</i> spp.</p> <p>2260 - <i>Cisto-Lavanduletalia</i> dune sclerophyllous shrubs</p>	<p><i>Arbutus unedo</i>, <i>Asparagus acutifolius</i>, <i>Cistus creticus eriocephalus</i>, <i>Clematis flammula</i>, <i>Daphne gnidium</i>, <i>Erica multiflora</i>, <i>Juniperus oxycedrus</i>, <i>J. phoenicea</i>, <i>Lonicera implexa</i> subsp. <i>implexa</i>, <i>Myrtus communis</i>, <i>Osyris alba</i>, <i>Phillyrea angustifolia</i>, <i>Pistacia lentiscus</i>, <i>Rhamnus alaternus</i> subsp. <i>alaternus</i>, <i>Rubia peregrina</i>, <i>Ruscus aculeatus</i>, <i>Salvia rosmarinus</i>, <i>Smilax aspera</i>, <i>Stachys major</i></p>

**Table S2. List of all sampled plant species**

List of all sampled species. Species are classified in typical (T), ruderal (R), alien (A). All species not included in these three categories were classified as other species (O). Species nomenclature and families follows Bartolucci et al. (2018) and Galasso et al. (2018). Species are sorted alphabetically by type, family and specie's name.

Family	Species	Type
AIZOACEAE	<i>Carpobrotus</i>	A
ASPARAGACEAE	<i>Yucca gloriosa</i>	A
ASPHODELACEAE	<i>Aloë maculata</i>	A
ASTERACEAE	<i>Ambrosia psilostachya</i>	A
ASTERACEAE	<i>Erigeron canadensis</i>	A
ASTERACEAE	<i>Erigeron sumatrensis</i>	A
ASTERACEAE	<i>Symphyotrichum</i>	A
ASTERACEAE	<i>Xanthium italicum</i>	A
FABACEAE	<i>Amorpha fruticosa</i>	A
FABACEAE	<i>Robinia pseudacacia</i>	A
PITTOSPORACEAE	<i>Pittosporum tobira</i>	A
POACEAE	<i>Arundo donax</i>	A
POACEAE	<i>Avena sterilis</i>	A
POACEAE	<i>Paspalum vaginatum</i>	A
POACEAE	<i>Phalaris canariensis</i>	A
POACEAE	<i>Sporobolus pumilus</i>	A
ROSACEAE	<i>Prunus armeniaca</i>	A
AMARYLLIDACEAE	<i>Pancratium maritimum</i>	T
ANACARDIACEAE	<i>Pistacia lentiscus</i>	T
APIACEAE	<i>Daucus pumilus</i>	T
APIACEAE	<i>Echinophora spinosa</i>	T
APIACEAE	<i>Eryngium maritimum</i>	T
APIACEAE	<i>Seseli tortuosum</i> subsp.	T
ASPARAGACEAE	<i>Asparagus acutifolius</i>	T
ASPARAGACEAE	<i>Ruscus aculeatus</i>	T
ASTERACEAE	<i>Achillea maritima</i> subsp.	T
ASTERACEAE	<i>Anthemis maritima</i>	T
ASTERACEAE	<i>Centaurea aplolepa</i>	T
ASTERACEAE	<i>Helichrysum stoechas</i>	T
ASTERACEAE	<i>Solidago litoralis</i>	T
ASTERACEAE	<i>Sonchus bulbosus</i> subsp.	T
BRASSICACEAE	<i>Cakile maritima</i> subsp.	T
BRASSICACEAE	<i>Marcus-kochia</i>	T
BRASSICACEAE	<i>Matthiola sinuata</i>	T
CAPRIFOLIACEAE	<i>Lomelosia rutifolia</i>	T

CAPRIFOLIACEAE	<i>Lonicera implexa</i> subsp.	T
CARYOPHYLLACEAE	<i>Silene canescens</i>	T
CHENOPODIACEAE	<i>Atriplex prostrata</i>	T
CHENOPODIACEAE	<i>Salsola kali</i>	T
CISTACEAE	<i>Cistus creticus</i> subsp.	T
CISTACEAE	<i>Tuberaria guttata</i>	T
CONVOLVULACEAE	<i>Convolvulus soldanella</i>	T
CUPRESSACEAE	<i>Juniperus oxycedrus</i>	T
CUPRESSACEAE	<i>Juniperus phoenicea</i>	T
CYPERACEAE	<i>Cyperus capitatus</i>	T
ERICACEAE	<i>Arbutus unedo</i>	T
ERICACEAE	<i>Erica multiflora</i> subsp.	T
EUPHORBIACEA	<i>Euphorbia paralias</i>	T
EUPHORBIACEA	<i>Euphorbia peplis</i>	T
FABACEAE	<i>Medicago littoralis</i>	T
FABACEAE	<i>Medicago marina</i>	T
FABACEAE	<i>Ononis variegata</i>	T
LAMIACEAE	<i>Salvia rosmarinus</i>	T
LAMIACEAE	<i>Stachys major</i>	T
LAMIACEAE	<i>Stachys maritima</i>	T
MYRTACEAE	<i>Myrtus communis</i>	T
OLEACEAE	<i>Phillyrea angustifolia</i>	T
POACEAE	<i>Calamagrostis arenaria</i>	T
POACEAE	<i>Cutandia maritima</i>	T
POACEAE	<i>Elymus farctus</i>	T
POACEAE	<i>Festuca fasciculata</i>	T
POACEAE	<i>Lagurus ovatus</i>	T
POACEAE	<i>Phleum arenarium</i>	T
POACEAE	<i>Sporobolus virginicus</i>	T
POLYGONACEAE	<i>Polygonum maritimum</i>	T
RANUNCULACEAE	<i>Clematis flammula</i>	T
RHAMNACEAE	<i>Rhamnus alaternus</i>	T
RUBIACEAE	<i>Crucianella maritima</i>	T
RUBIACEAE	<i>Rubia peregrina</i>	T
SANTALACEAE	<i>Osyris alba</i>	T
SMILACACEAE	<i>Smilax aspera</i>	T
THYMELAEACEAE	<i>Daphne gnidium</i>	T
APIACEAE	<i>Crithmum maritimum</i>	O
ARALIACEAE	<i>Hedera helix</i> subsp. <i>helix</i>	O
ARECACEAE	<i>Chamaerops humilis</i>	O
ASTERACEAE	<i>Chondrilla juncea</i>	O

ASTERACEAE	<i>Cichorium intybus</i>	0
ASTERACEAE	<i>Cota tinctoria</i>	0
ASTERACEAE	<i>Hedypnois</i>	0
ASTERACEAE	<i>Hypochaeris</i>	0
ASTERACEAE	<i>Hypochaeris glabra</i>	0
ASTERACEAE	<i>Hypochaeris radicata</i>	0
ASTERACEAE	<i>Jacobaea maritima</i>	0
ASTERACEAE	<i>Limbarda crithmoides</i>	0
ASTERACEAE	<i>Reichardia picroides</i>	0
ASTERACEAE	<i>Urospermum</i>	0
BRASSICACEAE	<i>Maresia nana</i>	0
BRASSICACEAE	<i>Raphanus raphanistrum</i>	0
CAMPANULACEAE	<i>Campanula rapunculus</i>	0
CAPRIFOLIACEAE	<i>Sixalix atropurpurea</i>	0
CARYOPHYLLACEAE	<i>Arenaria leptocladus</i>	0
CARYOPHYLLACEAE	<i>Arenaria serpyllifolia</i>	0
CARYOPHYLLACEAE	<i>Cerastium diffusum</i>	0
CARYOPHYLLACEAE	<i>Petrorhagia prolifera</i>	0
CARYOPHYLLACEAE	<i>Silene otites</i>	0
CHENOPODIACEAE	<i>Atriplex halimus</i>	0
CHENOPODIACEAE	<i>Halimione portulacoides</i>	0
CISTACEAE	<i>Cistus creticus</i> subsp.	0
CONVOLVULACEAE	<i>Convolvulus</i> sp.	0
CONVOLVULACEAE	<i>Cuscuta</i> sp.	0
CYPERACEAE	<i>Carex flacca</i> s.l.	0
CYPERACEAE	<i>Cyperus rotundus</i>	0
CYPERACEAE	<i>Schoenus nigricans</i>	0
EQUISETACEAE	<i>Equisetum</i>	0
EUPHORBIACEA	<i>Euphorbia barrelieri</i>	0
EUPHORBIACEA	<i>Euphorbia peplus</i>	0
FABACEAE	<i>Lotus hirsutus</i>	0
FABACEAE	<i>Medicago lupulina</i>	0
FABACEAE	<i>Medicago rigidula</i>	0
FABACEAE	<i>Onobrychis caput-galli</i>	0
FABACEAE	<i>Ononis reclinata</i>	0
FABACEAE	<i>Trifolium angustifolium</i>	0
FABACEAE	<i>Trifolium dubium</i>	0
FABACEAE	<i>Trifolium squamosum</i>	0
FABACEAE	<i>Trifolium striatum</i> subsp.	0
FAGACEAE	<i>Quercus ilex</i> subsp. <i>ilex</i>	0
GENTIANACEAE	<i>Blackstonia perfoliata</i>	0

GENTIANACEAE	<i>Centaurium erythraea</i>	0
GERANIACEAE	<i>Geranium pusillum</i>	0
JUNCACEA	<i>Juncus acutus</i> subsp.	0
JUNCACEA	<i>Juncus inflexus</i> subsp.	0
LAMIACEAE	<i>Clinopodium nepeta</i>	0
LAMIACEAE	<i>Mentha suaveolens</i>	0
LAMIACEAE	<i>Stachys arvensis</i>	0
LAMIACEAE	<i>Teucrium capitatum</i>	0
LAMIACEAE	<i>Teucrium flavum</i> subsp.	0
LAMIACEAE	<i>Teucrium polium</i> subsp.	0
LINACEAE	<i>Linum corymbulosum</i>	0
LINACEAE	<i>Linum maritimum</i>	0
LINACEAE	<i>Linum strictum</i>	0
LINACEAE	<i>Linum tenuifolium</i>	0
OLEACEAE	<i>Phillyrea latifolia</i>	0
ONAGRACEAE	<i>Oenothera</i> sp.	0
OROBANCHACEAE	<i>Odontites luteus</i> subsp.	0
OROBANCHACEAE	<i>Orobanche minor</i>	0
PAPAVERACEAE	<i>Fumaria bicolor</i>	0
PAPAVERACEAE	<i>Glaucium flavum</i>	0
PINACEAE	<i>Pinus pinaster</i> subsp.	0
PINACEAE	<i>Pinus pinea</i>	0
PLANTAGINACEAE	<i>Plantago coronopus</i>	0
PLUMBAGINACEAE	<i>Limonium multiforme</i>	0
POACEAE	<i>Alopecurus myosuroides</i>	0
POACEAE	<i>Ampelodesmos</i>	0
POACEAE	<i>Anisantha rubens</i>	0
POACEAE	<i>Avena barbata</i>	0
POACEAE	<i>Avena fatua</i>	0
POACEAE	<i>Brachypodium rupestre</i>	0
POACEAE	<i>Brachypodium</i> sp.	0
POACEAE	<i>Brachypodium</i>	0
POACEAE	<i>Imperata cylindrica</i>	0
POACEAE	<i>Parapholis incurva</i>	0
POACEAE	<i>Phleum hirsutum</i> subsp.	0
POACEAE	<i>Phragmites australis</i>	0
POACEAE	<i>Rostraria pubescens</i>	0
POACEAE	<i>Tripidium ravennae</i>	0
POLYGONACEAE	<i>Rumex bucephalophorus</i>	0
RESEDACEAE	<i>Reseda alba</i>	0
ROSACEAE	<i>Rubus hirtus</i>	0

RUBIACEAE	<i>Asperula cynanchica</i>	O
RUBIACEAE	<i>Galium murale</i>	O
RUBIACEAE	<i>Sherardia arvensis</i>	O
SOLANACEAE	<i>Solanum</i> sp.	O
TAMARICACEAE	<i>Tamarix africana</i>	O
TAMARICACEAE	<i>Tamarix gallica</i>	O
THYMELAEACEAE	<i>Daphne sericea</i>	O
ULMACEAE	<i>Ulmus minor</i>	O
APIACEAE	<i>Daucus carota</i>	R
APIACEAE	<i>Torilis arvensis</i> subsp.	R
ASTERACEAE	<i>Centaurea</i>	R
ASTERACEAE	<i>Crepis foetida</i> subsp.	R
ASTERACEAE	<i>Dittrichia viscosa</i> subsp.	R
ASTERACEAE	<i>Scolymus hispanicus</i>	R
ASTERACEAE	<i>Sonchus asper</i>	R
ASTERACEAE	<i>Sonchus oleraceus</i>	R
BORAGINACEAE	<i>Myosotis arvensis</i>	R
BRASSICACEAE	<i>Raphanus raphanistrum</i>	R
CARYOPHYLLACEAE	<i>Cerastium glomeratum</i>	R
CHENOPODIACEAE	<i>Chenopodium album</i>	R
CONVOLVULACEAE	<i>Convolvulus arvensis</i>	R
FABACEAE	<i>Medicago minima</i>	R
FABACEAE	<i>Trifolium campestre</i>	R
FABACEAE	<i>Vicia bithynica</i>	R
GERANIACEAE	<i>Geranium purpureum</i>	R
OROBANCHACEAE	<i>Orobanche artemisiae-</i>	R
PAPAVERACEAE	<i>Papaver rhoeas</i> subsp.	R
POACEAE	<i>Anisantha madritensis</i>	R
POACEAE	<i>Anisantha rigida</i>	R
POACEAE	<i>Anisantha sterilis</i>	R
POACEAE	<i>Anisantha tectorum</i>	R
POACEAE	<i>Catapodium balearicum</i>	R
POACEAE	<i>Catapodium hemipoa</i>	R
POACEAE	<i>Cynodon dactylon</i>	R
POACEAE	<i>Dactylis glomerata</i>	R
POACEAE	<i>Elymus repens</i> subsp.	R
POACEAE	<i>Poa bulbosa</i>	R
POLYGONACEAE	<i>Polygonum aviculare</i>	R
PRIMULACEAE	<i>Lysimachia arvensis</i>	R
RANUNCULACEAE	<i>Clematis vitalba</i>	R
ROSACEAE	<i>Rubus ulmifolius</i>	R

SCROPHULARIACEAE

*Verbascum sinuatum*

R



**Table S3. List of mapped land cover classes**

List of mapped land cover classes expanded up to the fourth level of detail of the CORINE code (and description). A detailed description of each class is also reported. In bold was indicated the reference to each specific coverage class in this paper.

CORINE Code	CORINE Description	Detailed description
1.1.1.2.	Artificial areas	<b>Artificial facilities</b> , including urban fabrics, and industrial and commercial units
1.4	Artificial, non-agricultural vegetated areas	<b>Tourism facilities</b> , including bathing houses and camping
2	Agricultural areas	<b>Agricultural areas</b> , including arable land, permanent crops, pastures, and heterogeneous agricultural areas.
3.1.2.1	Afforestation	<b>Coniferous afforestation</b> on coastal dunes with <i>Pinus</i> spp.
3.1.3.1	Mixed forests	<b>Mixed forests</b> : vegetation formation composed principally of trees, including shrub and bush understorey, where neither broad-leaved nor coniferous species predominate
3.2.3.1.	Mediterranean maquis	<b>Woody dune vegetation</b> growing on fixed dune. Includes shrub and sclerophyll communities dominated by <i>Juniperus</i> spp. and <i>Cistus-Lavenduletalia</i> typical of the EUNIS habitat: N1B
3.2.4.1.	Semi-natural Woody Vegetation	Bushy vegetation with scattered trees represented by foredune woodland degradation or forest regeneration/recolonization
3.2.4.2.	Semi-natural Herbaceous Vegetation	Abandoned meadows and pastures with different degree of degradation or recolonization
3.3.1.1.	Open sand	<b>Beach pioneer vegetation</b> : upper beach characterised by open sand colonised by pioneer annual vegetation. Includes the EUNIS habitat N12
3.3.1.2.	Herbaceous Dune Vegetation	<b>Herbaceous Dune Vegetation</b> : foredunes colonised by herbaceous vegetation intermingled to open sectors. Includes the EUNIS habitat N14 and N16
4	Wetlands	Inland and coastal wetlands and marshes

**Table S4. List of predictors used in the linear and generalized linear models, and in structural equation models.**

All variables below were calculated within each linear buffer. Exceptions are: distance to artificial areas, distance to tourism facilities, and shoreline dynamism, which were measured in terms of minimum distance from each vegetation plot. Variables in bold did not score high values of the variance inflation factor (VIF; vif function, car R package, Fox and Weisberg 2019), and therefore were included in the statistical analyses.

Name	Description
<b>Beach pioneer vegetation (%)</b>	Proportion (%) of areas covered by beach pioneer vegetation land cover class
<b>Herbaceous dune vegetation (%)</b>	Proportion (%) of areas covered by herbaceous dune vegetation land cover class
<b>Woody Dune Vegetation (%)</b>	Proportion (%) of areas covered by woody dune vegetation land cover class
<b>Mixed forests (%)</b>	Proportion (%) of areas covered by mixed forests land cover class
<b>Coniferous afforestation (%)</b>	Proportion (%) of areas covered by coniferous afforestation with <i>Pinus</i> spp. land cover class
<b>Agricultural (%)</b>	Proportion (%) of areas covered by agricultural land cover class
<b>Artificial areas (%)</b>	Proportion (%) of areas covered by artificial land cover class
Tourism facilities (%)	Proportion (%) of areas covered by tourism facilities land cover class
<b>Landscape diversity (Shannon's index)</b>	Shannon's diversity Index of land cover class
Landscape diversity (Simpson's index)	Simpson's diversity index of land cover class
Number of classes	Number of land cover classes
<b>Distance to artificial areas</b>	Minimum distance from each vegetation plot to the centroid of artificial patches
Distance to tourism facilities	Minimum distance from each vegetation plot to the centroid of touristic patches
<b>Shoreline dynamism</b>	Shoreline erosion (negative values) and accretion (positive values) between 2010 - 2019
Latitude	Latitude (Y coordinate) of each vegetation plot

**Table S5.** Summary of the model for species richness. Statistically significant relationships are highlighted in bold. Adjusted R<sup>2</sup>: 35%

<i>Predictors</i>	<i>Estimate</i>	<i>Std. Error</i>	<i>Z value</i>	<i>p-value</i>
(Intercept)	1.49	0.16	9.12	<b>&lt;0.001</b>
EUNIS N16	0.06	0.07	0.90	0.370
EUNIS N1B	0.27	0.05	5.08	<b>&lt;0.001</b>
Agriculture (%)	0.46	0.21	2.16	<b>&lt;0.05</b>
Artificial areas (%)	0.44	0.17	2.58	<b>&lt;0.01</b>
Beach Pioneer Veg.(%)	1.15	0.23	4.92	<b>&lt;0.001</b>
Coniferous afforestation (%)	-0.10	0.13	-0.76	0.448
Distance to artificial areas (m)	-0.00	0.00	-2.07	<b>&lt;0.05</b>
Herbaceous Dune Vegetation (%)	0.49	0.15	3.17	<b>0.01</b>
Landscape diversity (Shannon's index)	0.11	0.07	1.63	0.103
Mixed forests (%)	-0.37	0.20	-1.88	0.060
Shoreline dynamism	-0.00	0.00	-1.64	0.102
Woody Dune Vegetation (%)	-0.05	0.18	-0.28	0.782
EUNIS N16:Agriculture (%)	1.19	0.33	3.57	<b>&lt;0.001</b>
EUNIS N1B:Agriculture (%)	-1.47	0.66	-2.22	<b>&lt;0.05</b>
EUNIS N16:Artificial areas (%)	0.77	0.23	3.33	<b>&lt;0.001</b>
EUNIS N1B:Artificial areas (%)	0.10	0.22	0.43	0.666
EUNIS N16:Shoreline dynamism	0.01	0.00	2.70	<b>&lt;0.01</b>
EUNIS N1B:Shoreline dynamism	0.00	0.00	1.53	0.126

**Table S6** Summary of the model for proportion of typical and ruderal species. Statistically significant relationships are highlighted in bold. Adjusted R<sup>2</sup>: 31% (proportion of typical species); 19% (proportion of ruderal species).

Predictors	Proportion of typical species				Proportion of ruderal species			
	Estimate	Std. Error	z value	p-value	Estimate	Std. Error	z value	p-value
(Intercept)	1.49	0.43	3.45	<b>&lt;0.001</b>	-4.82	0.77	-6.26	<b>&lt;0.001</b>
EUNIS N16	-2.65	0.59	-4.51	<b>&lt;0.001</b>	1.30	0.29	4.42	<b>&lt;0.001</b>
EUNIS N1B	-0.77	0.46	-1.67	0.095	1.59	0.29	5.54	<b>&lt;0.001</b>
Agriculture (%)	-1.20	0.45	-2.65	<b>&lt;0.01</b>	3.15	0.92	3.42	<b>&lt;0.001</b>
Artificial areas (%)	-2.11	0.36	-5.88	<b>&lt;0.001</b>	3.20	0.73	4.35	<b>&lt;0.001</b>
Beach pioneer vegetation (%)	-1.34	0.72	-1.85	0.064	0.41	1.06	0.39	0.699
Coniferous afforestation (%)	-0.26	0.28	-0.92	0.355	-0.03	0.66	-0.05	0.963
Distance to artificial areas (m)	-0.00	0.00	-1.69	0.092	-0.00	0.00	-1.83	0.067
Herbaceous dune vegetation (%)	-0.86	0.46	-1.88	0.059	1.52	0.69	2.20	<b>&lt;0.05</b>
Landscape diversity (Shannon's index)	-0.35	0.23	-1.52	0.128	0.57	0.29	1.98	<b>&lt;0.05</b>
Mixed forests (%)	-1.23	0.50	-2.43	<b>&lt;0.05</b>	1.51	1.14	1.32	0.186
Shoreline dynamism	0.00	0.00	1.35	0.178	-0.01	0.01	-2.35	<b>&lt;0.05</b>
Woody dune vegetation (%)	0.88	0.38	2.32	<b>&lt;0.05</b>	-0.43	0.83	-0.52	0.600
EUNIS N16:Agriculture (%)	-0.84	0.84	-1.00	0.319	-0.15	1.07	-0.14	0.887
EUNIS N1B:Agriculture (%)	5.81	1.69	3.43	<b>&lt;0.001</b>	-10.79	8.57	-1.26	0.208
EUNIS N16:Artificial areas (%)	2.17	0.55	3.95	<b>&lt;0.001</b>	-2.25	0.84	-2.68	<b>&lt;0.01</b>

EUNIS N1B:Artificial areas (%)	1.86	0.47	3.92	<b>&lt;0.001</b>	-3.36	0.92	-3.67	<b>&lt;0.001</b>
EUNIS N16:Beach pioneer vegetation (%)	2.15	0.90	2.40	<b>&lt;0.05</b>	-	-	-	-
EUNIS N1B:Beach pioneer vegetation (%)	0.14	0.92	0.16	0.876	-	-	-	-
EUNIS N16:Herbaceous dune vegetation (%)	1.99	0.55	3.64	<b>&lt;0.001</b>	-	-	-	-
EUNIS N1B:Herbaceous dune vegetation (%)	-0.78	0.51	-1.53	0.125	-	-	-	-
EUNIS N16:Landscape diversity (Shannon's index)	0.74	0.38	1.91	0.056	-	-	-	-
EUNIS N1B:Landscape diversity (Shannon's index)	-0.42	0.34	-1.24	0.215	-	-	-	-
EUNIS N16:Mixed forests (%)	0.92	0.80	1.16	0.247	-1.69	1.45	-1.16	0.246
EUNIS N1B:Mixed forests (%)	3.81	1.15	3.32	<b>&lt;0.001</b>	-5.36	3.53	-1.52	0.129

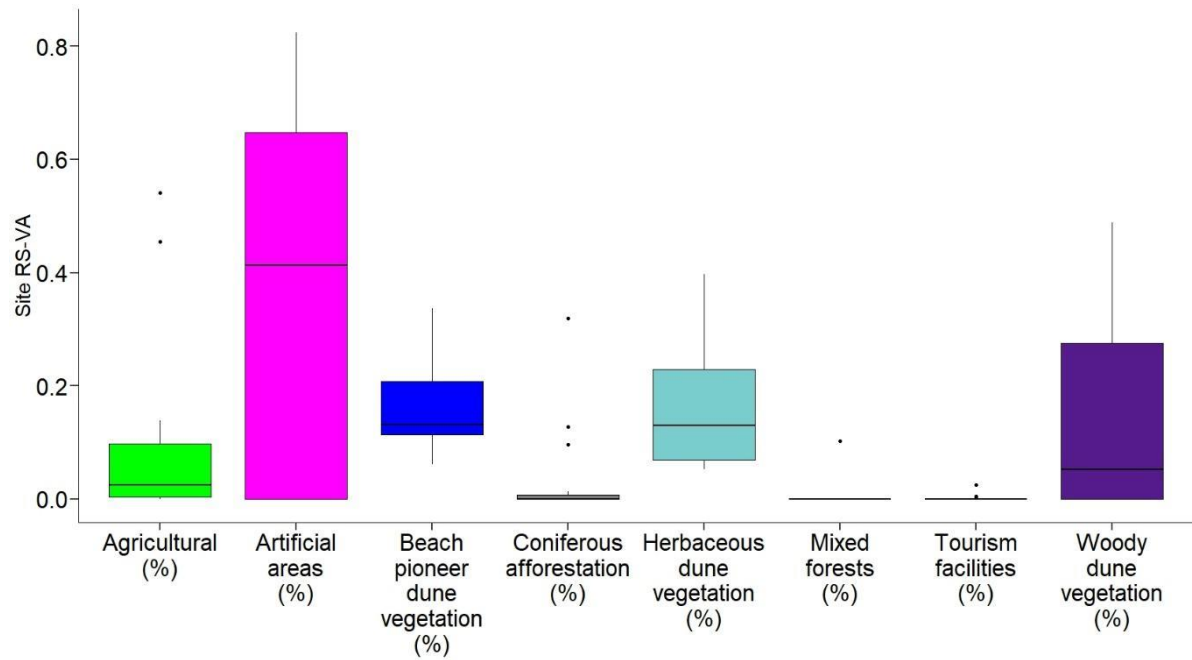
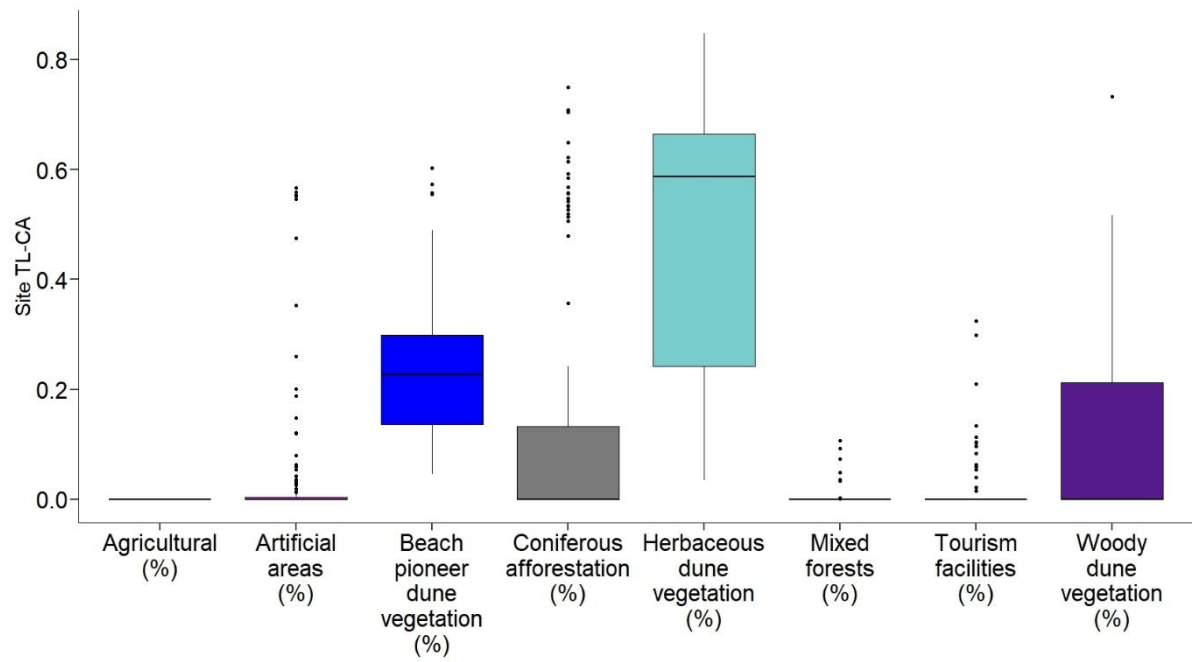
## References

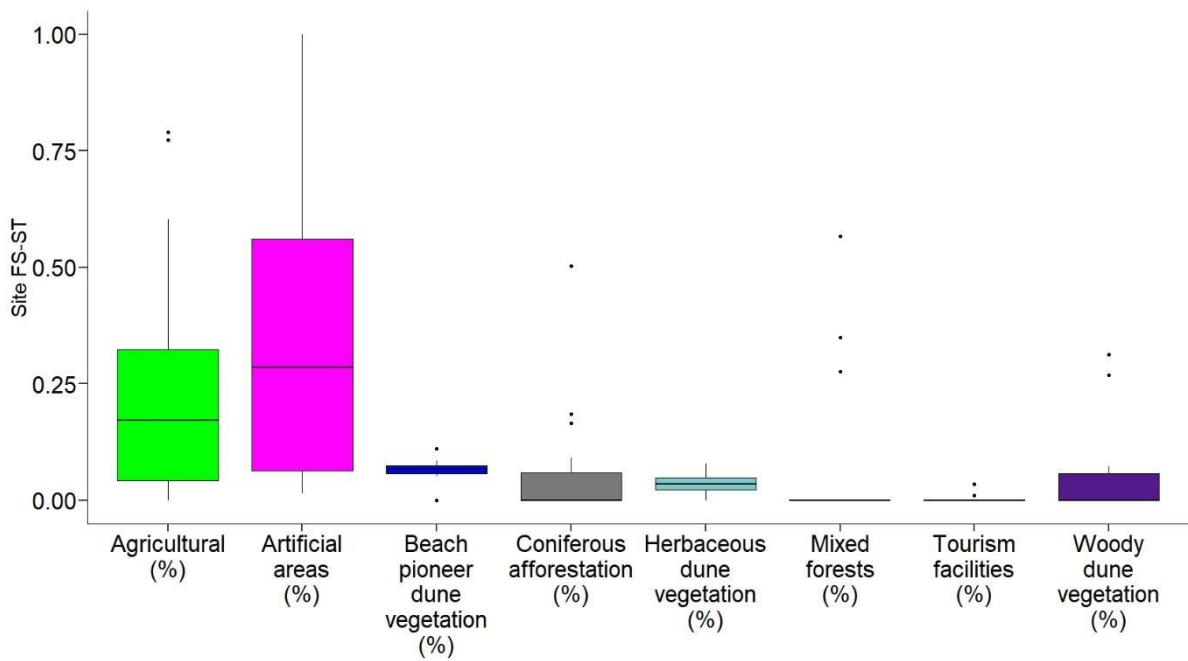
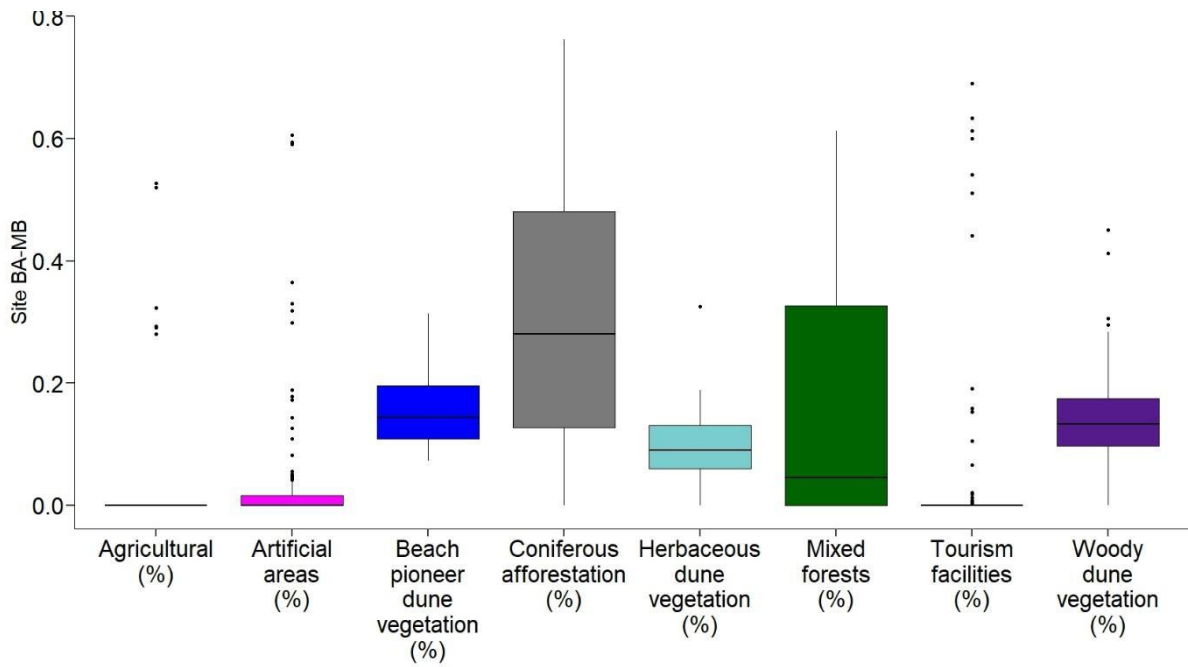
Bartolucci F, Peruzzi L, Galasso G, Albano A, Alessandrini A, Ardenghi NMG, Astuti G, Bacchetta G, Ballelli S, Banfi E, Barberis G, Bernardo L, Bouvet D, Bovio M, Cecchi L, Di Pietro R, Domina G, Fascetti S, Fenu G, Festi F, Foggi B, Gallo L, Gottschlich G, Gubellini L, Iamónico D, Iberite M, Jiménez-Mejías P, Lattanzi E, Marchetti D, Martinetto E, Masin RR, Medagli P, Passalacqua NG, Peccenini S, Pennesi R, Pierini B, Poldini L, Prosser F, Raimondo FM, Roma-Marzio F, Rosati L, Santangelo A, Scoppola A, Scortegagna S, Selvaggi A, Selvi F, Soldano A, Stinca A, Wagensommer RP, Wilhalm T, Conti F (2018) An updated checklist of the vascular flora native to Italy. *Plant Biosyst* 152(2): 179-303. <https://doi.org/10.1080/11263504.2017.1419996>

Galasso G, Conti F, Peruzzi L, Ardenghi NMG, Banfi E, Celesti-Grapow L, Albano A, Alessandrini A, Bacchetta G, Ballelli S, Bandini Mazzanti M, Barberis G, Bernardo L, Blasi C, Bouvet D, Bovio M, Cecchi L, Del Guacchio E, Domina G, Fascetti S, Gallo L, Gubellini L, Guiggi A, Iamónico D, Iberite M, Jiménez-Mejías P, Lattanzi E, Marchetti D, Martinetto E, Masin RR, Medagli P, Passalacqua NG, Peccenini S, Pennesi R, Pierini B, Podda L, Poldini L, Prosser F, Raimondo FM, Roma-Marzio F, Rosati L, Santangelo A, Scoppola A, Scortegagna S, Selvaggi A, Selvi F, Soldano A, Stinca A, Wagensommer RP, Wilhalm T, Bartolucci F (2018) An updated checklist of the vascular flora alien to Italy. *Plant Biosyst*, 152(3), 556-592. <https://doi.org/10.1080/11263504.2018.1441197>

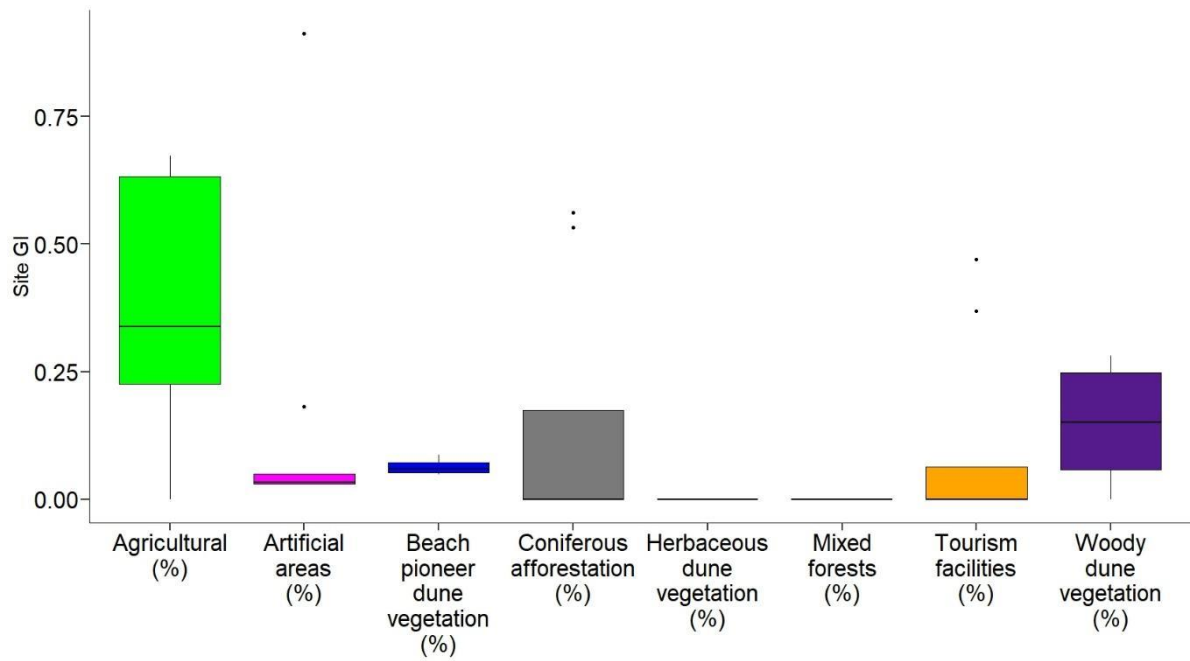
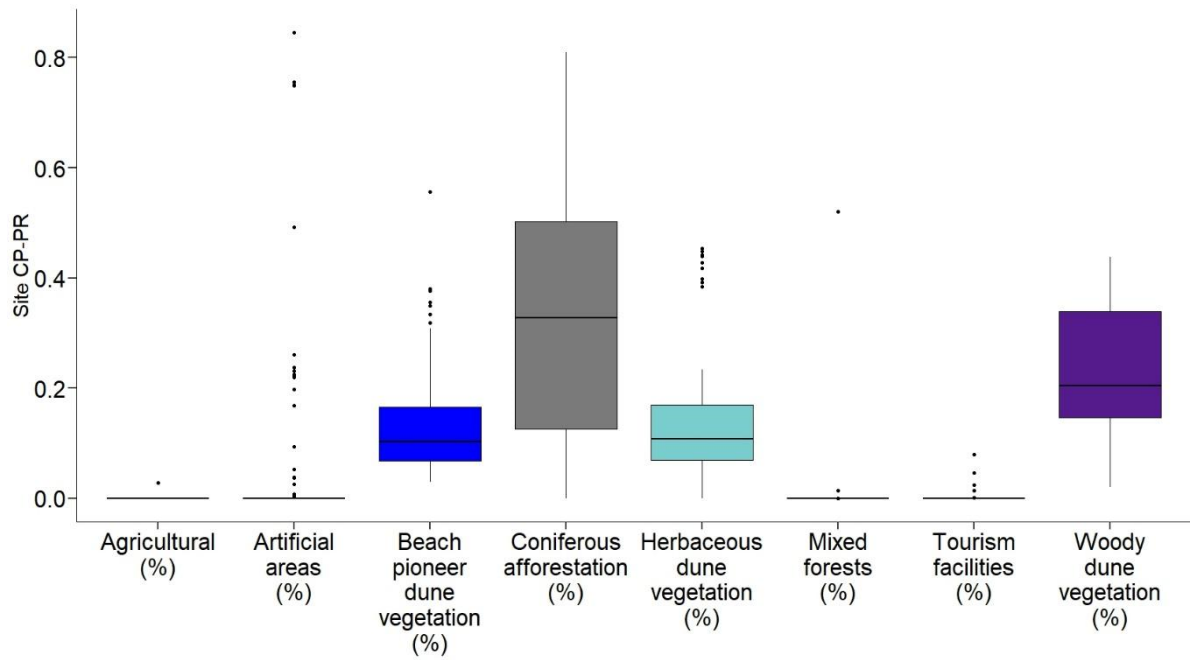
Fox J, Weisberg S (2019). An {R} Companion to Applied Regression, Third Edition. Thousand Oaks CA: Sage. URL: <https://socialsciences.mcmaster.ca/jfox/Books/Companion/>

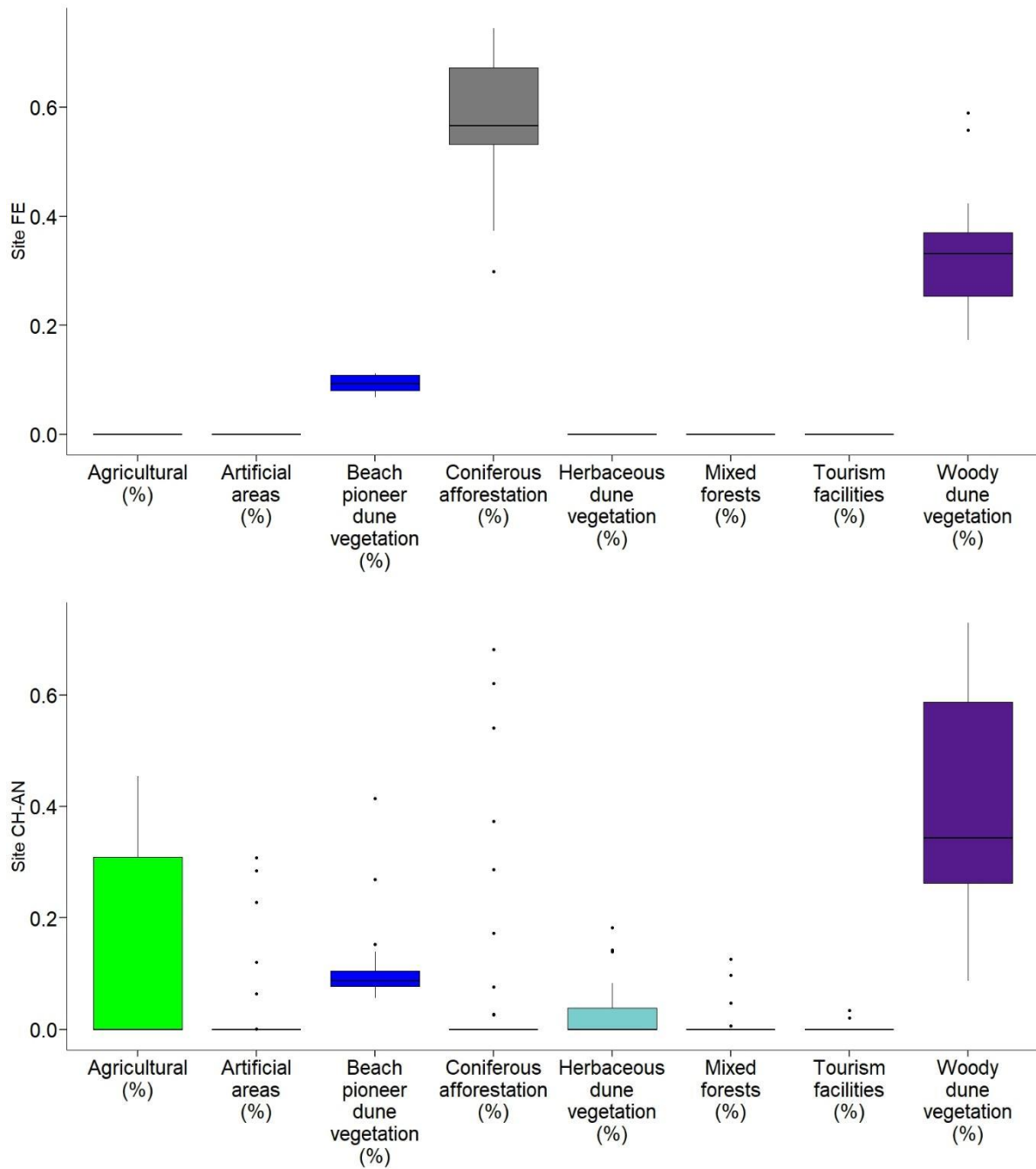
## Appendix 2











**Fig. S1** Boxplots showing median (black line), quartiles, outliers of proportional area (%) covered by each landcover class in all the study sites (from north to south). TL-CA: from Dune Litoranee di Torre del Lago to Calambrone; RS-VA: Rosignano Solvay and Vada; BA-MB: from Marina di Bibbona to Baratti; FS-ST: from Parco Costiero di Sterpaia to Tomboli di Follonica e Scarlino; CP-PR: from Dune di Castiglione della Pescaia to Principina a mare; GI: Giannella; FE: Feniglia; CH-AN: from Ansedonia to Chiarone Scalo.

**Table S1** Summary statistics of the lower (Q1), medium (Q2), and upper quartiles (Q3) of the proportional area (%) covered by each landcover class within each study site. TL-CA (from Dune Litoranee di Torre del Lago to Calambrone); RS-VA (Rosignano Solvay and Vada); BA-MB (from Marina di Bibbona to Baratti); FS-ST (from Coastal Park of Sterpaia to Tomboli di Follonica e Scarlino); CP-PR (from Castiglion della Pescaia dunes to Principina a mare); GI (Giannella); FE (Feniglia); CH-AN (from Ansedonia to Chiarone Scalo).

Site	Landcover class	Q1	Q2	Q3
BA-MB	Agricultural (%)	0	0	0
BA-MB	Artificial areas (%)	0	0	0.016
BA-MB	Beach pioneer dune vegetation (%)	0.108	0.143	0.196
BA-MB	Coniferous afforestation (%)	0.127	0.281	0.480
BA-MB	Herbaceous dune vegetation (%)	0.060	0.090	0.131
BA-MB	Mixed forests (%)	0	0.045	0.327
BA-MB	Tourism facilities (%)	0	0	0
BA-MB	Woody dune vegetation (%)	0.097	0.133	0.174
CH-AN	Agricultural (%)	0	0	0.309
CH-AN	Artificial areas (%)	0	0	0
CH-AN	Beach pioneer dune vegetation (%)	0.077	0.087	0.105
CH-AN	Coniferous afforestation (%)	0	0	0
CH-AN	Herbaceous dune vegetation (%)	0	0	0.039
CH-AN	Mixed forests (%)	0	0	0
CH-AN	Tourism facilities (%)	0	0	0
CH-AN	Woody dune vegetation (%)	0.262	0.343	0.587
CP-PR	Agricultural (%)	0	0	0
CP-PR	Artificial areas (%)	0	0	0
CP-PR	Beach pioneer dune vegetation (%)	0.067	0.102	0.166
CP-PR	Coniferous afforestation (%)	0.125	0.328	0.503
CP-PR	Herbaceous dune vegetation (%)	0.069	0.108	0.169
CP-PR	Mixed forests (%)	0	0	0
CP-PR	Tourism facilities (%)	0	0	0
CP-PR	Woody dune vegetation (%)	0.146	0.205	0.339

FE	Agricultural (%)	0	0	0
FE	Artificial areas (%)	0	0	0
FE	Beach pioneer dune vegetation (%)	0.080	0.092	0.108
FE	Coniferous afforestation (%)	0.532	0.566	0.672
FE	Herbaceous dune vegetation (%)	0	0	0
FE	Mixed forests (%)	0	0	0
FE	Tourism facilities (%)	0	0	0
FE	Woody dune vegetation (%)	0.254	0.331	0.370
FS-ST	Agricultural (%)	0.042	0.171	0.324
FS-ST	Artificial areas (%)	0.064	0.285	0.561
FS-ST	Beach pioneer dune vegetation (%)	0.058	0.066	0.074
FS-ST	Coniferous afforestation (%)	0	0	0.058
FS-ST	Herbaceous dune vegetation (%)	0.023	0.034	0.048
FS-ST	Mixed forests (%)	0	0	0
FS-ST	Tourism facilities (%)	0	0	0
FS-ST	Woody dune vegetation (%)	0	0	0.058
GI	Agricultural (%)	0.226	0.339	0.632
GI	Artificial areas (%)	0.030	0.033	0.049
GI	Beach pioneer dune vegetation (%)	0.052	0.059	0.072
GI	Coniferous afforestation (%)	0	0	0.174
GI	Herbaceous dune vegetation (%)	0	0	0
GI	Mixed forests (%)	0	0	0
GI	Tourism facilities (%)	0	0	0.064
GI	Woody dune vegetation (%)	0.058	0.151	0.248
RS-VA	Agricultural (%)	0.003	0.024	0.098
RS-VA	Artificial areas (%)	0	0.414	0.648
RS-VA	Beach pioneer dune vegetation (%)	0.114	0.132	0.208
RS-VA	Coniferous afforestation (%)	0	0	0.007
RS-VA	Herbaceous dune vegetation (%)	0.069	0.130	0.230

RS-VA	Mixed forests (%)	0	0	0
RS-VA	Tourism facilities (%)	0	0	0
RS-VA	Woody dune vegetation (%)	0	0.052	0.275
TL-CA	Agricultural (%)	0	0	0
TL-CA	Artificial areas (%)	0	0	0.004
TL-CA	Beach pioneer dune vegetation (%)	0.136	0.227	0.299
TL-CA	Coniferous afforestation (%)	0	0	0.133
TL-CA	Herbaceous dune vegetation (%)	0.242	0.587	0.665
TL-CA	Mixed forests (%)	0	0	0
TL-CA	Tourism facilities (%)	0	0	0
TL-CA	Woody dune vegetation (%)	0	0	0.213