

The cytoarchitecture of the telencephalon of *Labroides dimidiatus* (Labridae).

Dominika Chojnacka¹, Pawel Boguszewski², Barski Jarosław Jerzy³, Redouan Bshary⁴

¹Medical University of Silesia, Center for Experimental Medicine, Medykow 4, 40-752 Katowice, Poland

²Nencki Institute of Experimental Biology, Pasteur St. 3, 02-093 Warsaw, Poland

³Medical University of Silesia, Center for Experimental Medicine, Medykow 4, 40-752 Katowice, Poland

⁴University of Neuchâtel, Institute of Biology, Emile-Argand 11, 2000 Neuchâtel, Switzerland

Corresponding author: Dominika Chojnacka

dchojnacka@sum.edu.pl

+48 32 208 8593

Medical University of Silesia

Center for Experimental Medicine

Medykow 4, 40-752 Katowice, Poland

Abstract

As evidence for advanced cognitive abilities in fishes steadily increases, cytoarchitectonic studies of the Actinopterygian telencephalon receive increasing interest by neuro-ethologists. However, the amount of information concerning brain organization in this group is still rather small. Here, we present a cytoarchitectonic analysis of the telencephalon of *Labroides dimidiatus*, a species showing highly sophisticated interspecific social behavior in cleaning interactions with other reef fish species. Analysing cresyl violet-stained serial transverse sections, we designated cell regions and nuclei on the basis of characteristic size, shape and intensity of pericarion staining, density and distribution of cell bodies, cell-poor zones; congruence of cell groups with brain cellular structure identified in other species, consistent sequence of cell groups in subsequent sections and in corresponding centres of the opposite hemisphere. 27 telencephalic regions and nuclei, 9 in the ventral part and 18 in the dorsal part of the telencephalon were recognized and described.

Keywords: *Labroides dimidiatus*, Telencephalon, cytoarchitecture, animal cognition

Introduction

There is increasing interest in the cognitive abilities of fishes, especially of ray-finned bony fish (*Actinopterygii*) (Brown et al. 2011; Bshary et al. 2014; Brown 2015; Luton-Xiccato et al. 2017; Bshary and Triki 2022). There are several reasons for this interest. First, ray-finned fishes have been shown to possess a great variety of cognitive tools that go beyond basic associative learning (operant and classical conditioning). There is experimental evidence for cognitive maps in rock-pool blennies (Aronson 1971), transitive inference (Grosenick et al. 2007), complex social learning rules (Laland 2004, Hoppitt and Laland 2013), referential gestures (Vail et al. 2013), generalization (Wismer et al. 2016) or mirror self-recognition (Kohda et al. 2019,

2022, 2023). Second, fish live in highly diverse habitats and may differ greatly with respect to social organization. Most famously, cichlid fishes show a great variety of social systems (Jungwirth and Taborsky 2015, Taborsky 2013). Such diversity offers great opportunities to study associated variation in social behavior (Jordan et al. 2021; Lein and Jordan 2021), physiological changes in the brain (Fernald 2015, 2016, Loveland and Fernald 2017), and eventually variation in cognitive performance. Third, comparative research on vertebrate brains has identified amazingly conserved structures with respect to a so-called social decision-making network, which consists of the 'social behaviour network' and the 'basal forebrain reward system' (O'Connell and Hofmann, 2011, 2012). The mesolimbic reward system and the social behavior network comprise 13 brain regions that are interconnected and are present in all vertebrates (O'Connell and Hofmann, 2011). Most parts of the mesolimbic reward system are situated in the telencephalon, regions Dm, Dl, Vd, Vc the homologues of basolateral amygdala, hippocampus, nucleus accumbens and striatum respectively, with functional connection between those two systems situated in medial amygdala and lateral septum, the Vs and Vl/Vv nuclei in fish (O'Connell and Hoffmann, 2012). Given these similarities, fishes seem to offer vast opportunities for testing general principles concerning social behavior and underlying cognitive mechanisms and processes (Brown et al. 2011; Bshary et al. 2014).

While there are many similarities between ray-finned fishes and endotherm vertebrates (mammals and birds) with respect to behavior, cognitive processes and parts of brain organization, there are also very important known differences. First, the average ray-finned fish brain relative to body weight is about ten times smaller than in the average endotherm (Jerison 1971; Tsuboi et al. 2018). This huge difference raises the question what endotherms can do that Teleostei fish cannot. Second, there seem to be major differences in brain organization. For example, intraspecific brain-body slopes are very different between mammals and fishes, with the former yielding estimated slopes of 0.25-0.3 (van Schaik et al. 2021) and the latter slopes of about 0.45, albeit with large between-species variation (Triki et al. 2021). Furthermore, it is well known that the ray-finned fish telencephalon undergoes a process called eversion versus evagination in tetrapods (Butler and Hodos, 2005). As a result of eversion during development, the topology of the telencephalic pallium is transverse compared to Tetrapods (Broglio et al. 2005; Holmes and Northcutt, 2003; Yamamoto et al. 2007).

Currently, aims to link inter- and intraspecific variation in ecology and cognitive performance to variation in underlying brain structures (as well as physiological processes in these structures) are limited by a lack of detailed knowledge regarding brain regions. Such knowledge requires detailed brain atlases for a variety of species of interest, so that comparative research can go beyond correlating ecology and cognitive performance with overall brain measures and/or major brain areas like the telencephalon. Arguably, the textbook example about what insights can be gained from a focus on more specific brain regions involves between and within species variation in spatial memory and the hippocampus. Variation in hippocampus size predicts for example spatial memory performance i) across bird species that rely to different degrees on food caching (Krebs et al. 1989; Sherry et al. 1989), ii) between bird populations of the same species that rely to different degrees on food caching (Pravosudov & Clayton 2002), between female and male birds of the same species (Sherry et al. 1993), and iv) the ability of London taxi drivers to navigate the complex traffic network of the city (Maguire et al. 2006).

Here, we describe the basic cytoarchitecture of the telencephalon of the cleaner fish *Labroides dimidiatus*. This fish from the indopacific removes ectoparasites from visiting reef fish species, so-called clients (Côté 2000). It is of potential interest for more detailed brain research because it shows highly sophisticated social strategies and a variety of advanced cognitive processes (Bshary 2010). Regarding social strategies, it manipulates client decisions and reconciles with clients after a conflict (Bshary and Würth 2001), it uses predatory clients as social tools against aggressive non-predatory clients (Bshary et al. 2002), and it behaves more cooperatively towards a current client if observed by a bystander client (Pinto et al. 2011). Various studies show that cleaner outperform other fish species and even mammals, including primates, at learning tasks that are ecologically relevant to cleaning (Salwiczek et al. 2012; Gingins and Bshary 2016; Mazzei et al. 2019). Regarding the underlying cognitive processes, cleaners have been shown to use generalized rule learning (Wismer et al. 2016), high self-control as measured by their ability to delay gratification (Aellen et al. 2021), standard numbering competences (Triki & Bshary 2018), extensive long-term memory (Triki & Bshary 2019), the ability of mirror self-recognition based on a mental image of self (Kohda et al. 2019, 2022, 2023), the ability of sequential and configurational learning (Quiñones et al. 2020, Prat et al. 2022; Truskanov et al. 2021) as well as social learning of cleaning strategies (Truskanov et al. 2020). A potentially interesting negative result is that cleaners apparently lack the general intelligence factor 'g', as individual relative performance in one task did not predict its relative performance in other tasks (Aellen et al. 2022). Yet another interesting feature of cleaners is that their performance may vary in some tasks as a function of local intra- and interspecific fish densities (Wismer et al. 2014, 2018; Binning et al. 2017; Triki et al. 2018, 2019, 2020), as well as between males and females (Triki & Bshary 2022). While *L. dimidiatus* has an overall brain volume that is rather average for a wrasse of its size (Chojnacka et al. 2015), fish densities affect forebrain size and number of cells in their forebrain (Triki et al. 2019b, 2020). Hence, having a more detailed brain atlas may allow to eventually pinpoint the locations involved in the strategic sophistication, the various cognitive processes as well as a more detailed understanding on the variation in major brain areas.

The focus on the telencephalon can be justified not just by the data showing its variable size in cleaners (Triki et al. 2019, 2020) but more importantly by the accumulating evidence of its key role for more advanced cognitive processes in fishes. Already classic ablation studies showed that the telencephalon is key for coordinating different behaviours in a meaningful sequence, like nest building (Schönherr 1954, Seegar 1956; Lopez et al 2000; Portavella et al. 2002). More recently, selection on telencephalon size in guppies revealed its eminent role for so-called executive functions, i.e. top-down control mechanisms like flexibility, self-control and working memory (Burkart et al. 2016). Guppies with enlarged telencephalon outperformed down-selected guppies in tasks testing for executive functions, like reversal learning, detouring to reach a food source, and object permanence (Triki et al. 2022a, 2022b, 2023). A description of the basic cytoarchitecture of telencephalon of *Labroides dimidiatus* can hence be a useful base for the precise localization of the neuroendocrine territories and for the tracing of the neuronal connections, investigation of types and distribution of neurons in each centre, hormone concentration and gene expression and comparative research of regions potentially engaged in control of cognitive behavior. Basic neuroanatomical data will allow the study of the functions of each nucleus in the brain of this species and other related perciform fishes, in particular closely related species in the family Labridae with different degrees of behavioural complexity.

Materials and methods

Adult individuals used in the study were obtained from an importer of aquarium fish, and therefore their exact origin is unknown. We used both fish that for various causes did not survive transport or acclimatization, and live individuals, according to permit no. 70/05 from the Local Ethical Committee for Experiments on Animals. Individuals intended for the study were euthanized with MS222, dose over 250mg/l of water. Because MS222 is a low-pH agent, its solution was buffered with sodium hydroxide to prevent shock in fish transferred to it (Welker et. al 2007).

Before brain dissection, all fish were measured for morphometric features, i.e. body length and weight. The brain was dissected from the spinal cord at the level of the first spinal nerves and weighed after the removal of cerebro-spinal meninges and blood vessels.

Dissection

Individuals were collected from a pet shop, where they had died of unknown causes. Shop staff put whole individuals in 75% rubbing ethanol for preservation not later than 24 hours after death, before we picked them up. The individuals were additionally preserved for 10 days in 6% buffered formalin.

After dissection brains were washed in tap water for 24hrs, dehydrated in a series of alcohol solutions (30% - 1h, 50% - 2h, 70% - at least 2h, 90% - 2h, 96% - 2h, 100% - 4h, 100% - 4h), then washed in xylene for few seconds, and embedded in paraplast.

For microscopic analysis 7 μ m-thick serial transverse sections were cut on a Leica RM rotary microtome. Sections were applied on microscope slides and stained with cresyl violet (Nissl method). The protocol followed was a slightly modified method which is popular for these types of studies, and has been described many times in relevant literature (Davenport, 1960; McNally and Peters, 1998). Individual protocol steps include: immersion in a series of hydrating dilutions of xylene and alcohol (xylene - 3 times for 5min, alcohol: 100% - 3min., 100% - 3min., 96% - 2min., 80% - 2min., 70% - 2min., 50% - 2min.), and a final wash in distilled water for 1min. Sections were then stained with 2% cresyl violet solution (100ml water and 2g solid cresyl violet) for 2min and washed in differentiating solution (acetic aldehyde: 100ml 100% alcohol and 2 μ l of concentrated acetic acid). Cresyl violet stain differentiates nervous tissue. Sections were then dehydrated in a series of alcohol solutions (90%, 96%, 100%) for 2 minutes each, xylene (2 x 3 minutes) and mounted in DPX resin.

Different groups of cells were identified based on the following criteria:

1. Characteristic size, shape and intensity of pericarion staining
2. Density and distribution of cell bodies
3. Cell-poor zones;
4. Intensity of background (neuropil) staining
5. Relationship of cell groups to the anterior commissure and external sulci.
6. Congruence of cell groups with brain cellular structure identified in other species.
7. Consistent sequence of cell groups in subsequent sections and in corresponding centres of the opposite hemisphere.

Brain sections were preliminarily analyzed under a Nikon Eclipse 80i microscope and photographed at different magnifications with a Nikon Coolpix 4500 camera, and further scanned under an Olympus BX51 microscope for more detailed analysis. Images were saved in a digital format and analyzed with the dotSlide virtual microscopy system and OlyVIA image viewer software from Olympus Soft Imaging Solutions GmbH 2008. For the images of selected representative sections diagrams were added, with identified and described morphology regions. Representative sections were chosen, at 50, 100 or 130 μ m intervals. The slides and diagrams are available on <http://blackfishone.net/publications/pub2023-237/>. Where possible, we used the nomenclature of Northcutt (2006) which is a modification of the nomenclature used by Northcutt and Braford (1980) (Tab. 1).

Results

Our main aim is to present the cytoarchitectonic of the telencephalon of *L. dimidiatus*. As the majority of cell groups which compose telencephalon in Actinopterygii were precisely studied and described in a few species, we summarise those results in Tab. 2 to facilitate a comparison. Furthermore, these species are plotted on a phylogenetic tree so that the currently existing information on fish telencephalon cytoarchitectonic structure can be viewed with an evolutionary perspective (Tab. 3). In general, the Actinopterygian telencephalon is composed of two olfactory bulbs (OB) situated anteriorly and ventrally to brain hemispheres and ventral (V) and dorsal part of telencephalon (D), the equivalents of subpallium and pallium of other vertebrates, (Butler 1992; Meek and Nieuwenhuys 1998; Nieuwenhuys and Pouwels 1982; Northcutt and Braford 1980; Reiner and Northcutt 1992; Wullimann and Rink 2002, Wullimann and Mueller 2004; Wullimann 2009; Mueller and Wullimann 2015). A consensus also exists on the identification of the posterior pallial zone (Dp) as the homolog of the olfactory cortex (Wullimann and Mueller 2004; Nieuwenhuys 2009). Comparative, neurohistochemist and behavioral research shows that the Actinopterygian dorsal telencephalon contain subdivisions homologous to amygdala, hippocampus and isocortex of tetrapodes, Dm, Dlv and Dld and Dd respectively (Broglia et al. 2003; Butler 1994; López et al. 2000; Rodriguez et al. 2002; Yamamoto et al. 2007; Mueller and Wullimann 2015). Moreover, a center of multimodal integration in the telencephalon is Dm (Prechtl et al. 1998; Yamane et al. 1996). In the text, we focus on the cytoarchitectonic structure of *L. dimidiatus*, detailed comparison of the number of nuclei and regions in the telencephalon is summarized in Tab. 2.

Olfactory bulbs

Olfactory bulbs (OB) terminate directly without secondary olfactory tracts and are thus sessile in this fish. OB of *Labroides dimidiatus* are very small compared to other teleosts and only two visible layers can be distinguished: a granular cell layer (GCL) situated in the dorsal-most part of the olfactory bulb and the glomerular layer (GL) with its less densely packed cells. Usually four concentric cell layers can be distinguished in other fish with OB situated rostrally to the telencephalon with only more caudal parts lying ventrally to the telencephalon (Karoubi et al. 2016, Baile and Patle 2011, D'Angelo 2013). OB in *Labroides* are so small that they can be distinguished only in a small part of the ventral telencephalon without protruding to the rostral part of telencephalon.

Telencephalic hemispheres

The telencephalic hemispheres can be divided into two main divisions, the ventral part (V; composed of nuclei) and dorsal part (D; composed of areas and regions). We recognized and described 27 telencephalic regions and nuclei, 9 in the ventral part and 18 in the dorsal part of the telencephalon. The total number is slightly larger than in studies on other fish species using the same methods (Baile and Patle 2011; Cerda-Reverter et al. 2001).

Ventral telencephalon

The ventral area presents a rather constant pattern among the actinopterygian fishes (Nieuwenhuys 1963; Northcutt 1995) as compared to the dorsal area. In the ventral telencephalon of *L. dimidiatus*, like in other actinopterygians, four main cell nuclei, dorsal (Vd), ventral (Vv), supracommissural (Vs), and postcommissural (Vp), were observed (D'Angelo 2013; Anken and Rahmann, 1994; Burmeister et al. 2009). Moreover, commissural (Vc), lateral (Vl) and entopeduncular (EN) nuclei, which tend to be more variable in their presence among teleosts, were recognized in the subpallium of *L. dimidiatus*.

The most rostral cell cluster of the ventral telencephalon is called the nucleus supracommissuralis (Vs). It consists of small, heavily stained and densely packed cells, which become more scattered in the caudal part. It originates near the ventricle as an oval compact nucleus, which extends into the dorsal direction remaining in the paraventricular location. It ventrally adjoins the Dm3 zone. It originates exactly at the boundary of the ventricle. The nucleus supracommissuralis is followed by the nucleus postcommissuralis (Vp) in the more caudal part of the ventral telencephalon (Fig. 2-4, 10, 11).

The dorsal nucleus of the ventral telencephalon (Vd) is composed of very small and very heavily stained cells grouped in tiny clusters. This region originates at the lateral side of the Vs area and extends in a crescent-like shape to the latero-dorsal direction (Fig. 2-4, 11,13).

The ventral nucleus of the ventral telencephalon (Vv) originates in the paraventricular area, ventrally to Vs and Vd, and extends towards the lateral and dorsal area. It is characterized by very small, heavily stained cells, grouped in clusters, which become dispersed and combine into groups to form a compact, sharply demarcated region. In the caudal direction the nucleus extends laterally and the cells become more loosely distributed and scattered. Caudally, the Vv area separates into two additional nuclei, Vv-m stays in periventricular position, Vv-l moves laterally (Fig. 3, 4, 10).

Vd, Vs and Vv in *L. dimidiatus* all starts rostrally in ventricular position caudally moving to more central part of telencephalon, which according to Butler and Hodos (2005) is one of the characteristics of a more derived and complex brain structure.

The nucleus postcommissuralis (Vp) is composed of very darkly stained cells, arranged in groups, which form very distinct columns parallel to the surface of the telencephalon. From the dorsal side it is bordered by Dm4, from the ventral side by Vv-m. It originates in periventricular position. Caudally, it merges with the Vv nucleus (Fig. 4-7, 12).

The nucleus commissuralis (Vc) is closely associated with the sulcus externus, composed of large cells that are grouped around the sulcus, intersected by nerve fibers running towards Dc. It originates as a set of medium-sized to large cells (especially in the caudal area), located dorsomedially to the sulcus externus. This small nucleus is composed of a few small cells in the rostral part which become larger and diffuse caudally. The

spongy neuropil is traversed by blood vessels and nerve fibers (Fig. 4-6, 14, 15). The position associated with sulcus externus is also described in most studied species.

A very small lateral nucleus (VI) (Fig. 5, 15) is located in the rostral part of telencephalon close to the ventral surface of the telencephalon, with not clearly delimited boundaries. It is composed of several medium-size to large cells.

The entopeduncular nucleus (EN) is the most variable structure of ventral telencephalon in ray-finned fish (Baile and Patle 2011). In *L. dimidiatus* it is composed of an intensely stained and very densely packed single cell population that extends into the diencephalon. As in other teleosts it is closely associated with the forebrain bundles (Fig. 7, 16).

Dorsal telencephalon

The dorsal telencephalon of ray-finned fish shows much more interspecific variations than the ventral telencephalon, due to differences in the eversion processes of the telencephalic walls, different hypertrophy and thickening of cerebral walls (Butler and Hodos, 2005). Nevertheless, in *L. dimidiatus*, as in other teleosts, the dorsal telencephalon can be divided into four main areas: the medial (Dm), dorsal (Dd), central (Dc) and lateral (Dl), where each can be subdivided into many distinct cell groups. The Dp could not be distinguished or is wrongly interpreted as Dlp in this species, and more precise studies of neuronal connections need to be carried out. The basis for this division is the relatively simple pallium of the zebrafish, in which basically undivided Dm, Dl, Dd, Dc and Dp are recognized (Wullimann, 1996).

The medial part (Dm) of the telencephalon in *L. dimidiatus* is divided into 4 main areas: Dm1, Dm2, Dm3 and Dm4. Dm is located in the rostrocaudal area, reaching the most caudal part of the dorsal telencephalon. The Dm regions are named sequentially in the order in which they appeared (Fig. 1-9, 12, 17-21).

The most rostrally located Dm1 region in *L. dimidiatus* is ventrally enclosed by the acellular zone separating it from Dc. Caudally it moves laterally from the paraventricular side. The cells are medium-sized, relatively pale and blurry. In the rostral part, the cells are grouped, while in the caudal part they become scattered, making it difficult to determine the boundaries of the caudal area of this region and two sub-regions with higher cell density, located parallel to the ventricle can be distinguished (Fig. 18). They originate in the paraventricular area as two subdivisions, Dm1d and Dm1v, and make extensions towards the central and dorsal parts, replacing or merging with the Dm1 region. The cytoarchitecture of Dm1d and Dm1v areas slightly differ. Dm1d contains medium-small, relatively darkly stained and densely packed cells. The cells appear blurred and stretched. The sub-region Dm1d is made up of very small, heavily stained and closely packed cells which are not aggregated, and it is located ventrally to Dm1d, extending from the edge towards the centre (Fig. 1-3, 17, 18).

Region Dm2 is composed of large and medium-sized cells, bordering laterally with Dld. Its cellular composition resembles the Dm2 area described by Burmeister et al. (2009) in *Astatotilapia (Haplochromis) burtoni*. The cells of the rostral part of Dm2 are slightly larger than the Dm1 cells, but smaller than the cells of Dc. Dm2 originates rostrally, adjacent to Dld. Caudally, the cells are scattered, which makes the borders ill defined (Fig. 1, 2, 17). Because of its large cells, this region may be also considered as additional subdivision of Dc, associated with Dld or with an additional internal layer of the Dld.

Region Dm3 is composed of medium and small-sized, highly aggregated and heavily stained cells. In the caudal area the cells become more diffuse. This wide region covers dorsal and dorso-medial parts of the

telencephalon. It is composed of cells aggregating in columns perpendicular to the surface of the brain, with columns being separated by cell sparse bands and differ slightly in cellular arrangement (Dm3d is composed of predominantly large and densely packed cells, Dm3v composed exclusively of small cells). Caudally, the layers merge into one area and extend towards the ventral side (Fig. 3-8, 19-21).

Region Dm4 arises dorsally to the paraventricular area. In the ventricular area it arises as a stripe of dark cells, extending centrally and dorsally. It is composed of very small darkly stained cells. This region is characterized by clear stratification. The cellular layers are arranged alternately with areas less densely packed with cells, and concentrically bordering an area composed of large cells, which can be classified as a Dc sub-region due to the cell size (Fig. 4-9, 12, 20).

As the name implies, the central area (Dc) is usually located in the central zone of the dorsal telencephalon, between the medial, dorsal and lateral areas. In *L. dimidiatus*, however, it extends towards the dorsal surface of the pallium in the rostral part of the telencephalon. A similar deviating description was obtained by Karoubi et al. (2016) for the *Toxotes chatareus* pallium, where they stated that its commonly accepted central, large-celled part has a stalk-like continuation toward the everted ventricle, at least in the anterior telencephalon. The authors further classified this stalk as belonging to Dc. This can be correlated with the recently proposed claim that Dc should not to be confined to a centrally located pallial division as previously believed (Mueller et al. 2011). In other words, the central zone may be a histogenetic unit with its own ventricular zone and may correspond to the dorsal pallium (i.e., isocortex) (Karoubi et al. 2016). In the caudal telencephalon, the cells of Dc concentrate only in a central position, without protruding to the dorsal telencephalon. Dc in *L. dimidiatus* contains very large spindle-shaped, lightly stained cells with dark nuclei, which are widely scattered throughout the neuropil. In the caudal part of the area the cells are less abundant and more dispersed. As in other teleosts (Baile and Patle 2011, Munoz-Cueto et al. 2001), the central part is subdivided into at least two subregions: Dc1 and Dc2, where Dc1 is the largest subregion with several additional clusters of cells in its caudal part. Dc2 originates more rostrally and ventrally to Dc1. At the rostral side, Dc1 is separated from Dc2 by an acellular zone. Dc2 is laterally bordered with the Dld region, ventrally with Dlv1 and Dlv-pv, and it borders with Dc1 at the dorsal and intraventricular sides. It is composed of very large scattered cells, which are packed more densely at the edge. It joins the Dc1 more caudally. The neuropil of the Dc1 is light and spongy in structure, with numerous "holes" (Fig. 1-7, 22). Parvalbumin (Mueller et al. 2011) and calretinin (Castro et al. 2006) have been used in the zebrafish pallium to outline D1/Dc versus Dm, respectively, and similar studies in *L. dimidiatus* with calcium-binding proteins may reveal more clearly the extent of pallial divisions such as Dc (Karoubi et al. 2016).

The dorsal area of the dorsal telencephalon (Dd) in *L. dimidiatus* is associated with the sulcus ypsiloniformis (Sy). The neuropil of Dd is very darkly stained, with small cells grouped in tiny clusters. In the rostral telencephalon, the nucleus is medially bordered with Dm3, from which it is separated by a virtually acellular structure. Laterally, it borders the dorsal part of the lateral telencephalon (Dld). At the caudal side, it becomes wider, forming an inverted triangle. As the central part of the dorsal telencephalon Dm3 increases, the nucleus slightly extends to the side, and finally it seems to combine with Dld (Fig. 4-7, 19, 23). A similar position and characteristics of cells is described in other perciform fishes (Northcutt and Davis 1983; Marino-Neto and Sabbatini 1988; Cerda-Reverter et al. 2001, D'angelo 2013, Baile and Patle 2011). Only Riedel (1997)

described in the blind cave fish *Astuanax hubbsia* a dorsal part formed by large cells. Dd is interpreted by Mueller et al (2015), as a part of the lateral pallial zone in *Danio rerio*.

The lateral area of the dorsal telencephalon (Dl) is one of the most expanded components of the wrasse's telencephalon. It extends throughout the entire rostrocaudal part of the dorsolateral and ventrolateral regions in both brain hemispheres. The lateral area consists of 2 main regions: ventral (Dlv) and dorsal (Dld) (Fig. 1-8, 23-28).

The ventral region of Dl in *L. dimidiatus* is subdivided into three cell populations: Dlv1, Dlv-pv and Dlv-mg. In the rostral part, the boundary between the Dlv1 and Dlv-pv areas is clearly demarcated, and these regions differ with respect to cell size and density. Dlv-pv consists of small, tightly packed cells, resembling cells of the Dld region. Dlv-pv is located at the lateral side of the Dlv1 area, extending laterally to Dld, centrally overlapping Dlv-mg. Dlv1 cells are medium-sized to large, pale, slightly blurred, unevenly distributed and fairly densely packed. Dorsally Dlv1 is surrounded by an acellular zone. Some cells of the region are arranged in lines perpendicular to the ventral edge. Dlv1 is located more rostrally, bordering medially with Dc1 and caudolaterally with region Dlv-pv. Caudally, Dlv1 is changing position to the mid-ventral area, towards the ventricle. Dlv-mg cells are very large, resembling cells of the Dlv1 area. They possibly represent one structure separated by blood vessels (Fig. 1-5, 24, 27, 28).

The dorsal region of the lateral area of dorsal telencephalon (Dld) is poorly distinguishable from Dlv-pv as the lateral part of Dld is characterized by the same cell size and similarly stained neuropil, especially in caudal telencephalon. However, in the Dld area, a distinct cortical structure made of at least 4 layers is present. The layers differ in terms of cell size and distribution. Layer no. 1 is located in the dorsolateral part by the outer margin, and is formed by very small, moderately stained cells. Layer no. 2 is also formed by very small cells, but these are more intensely stained and more densely arranged than in other layers. Within this layer a single tract of cells is formed, which then transforms into the V-shaped region, caudally changing into a layer parallel to the lateral margin. Layer no. 3 is formed by very small cells (smaller than in layer no. 2) which are intensely stained, and caudally connects with other layers. Layer no. 4 is formed by very small, intensely stained and sparsely distributed cells. Caudally, the layers overlap and merge into a single area (Fig. 1-5, 24-26). According to Butler and Hodos (2005), a layered structure is one of the features characterizing more complex/developed brains.

The wrasse's region Dlp is very poorly demarcated. It originates in the most caudal part of the telencephalon, composed of cells similar to cells of the Dlv-pv area, separated only by a blurred acellular zone. Caudally, it merges with Dlv-pv and Dld (Fig. 5-8, 23, 26). It may also constitute a part of Dlv/Dld region. Dp is considered a principal target of secondary olfactory fibers (Northcutt and Braford 1980). It is found in most studied species but in *L. dimidiatus*, the Dp could not be characterized probably due to the limited importance of olfaction in this species. Crucial for identifying with certainty the posterior pallial zone (Dp) will be to find connections to the olfactory bulb.

In the caudal telencephalon the nucleus taeniae (NT) can be distinguished situated on the border between subregion Dlv-pv and sulcus externus. It is composed of small, densely packed cells (Fig. 5-7, 28).

General discussion

Overall, the general cytoarchitectonic of the telencephalon of *L. dimidiatus* presents similar organizational patterns to those described for other acantomorphs teleost (Cerdeira-Reverte et al. 2001a; Pepels et

al. 2002; Burmeister et al. 2009; D'Angelo, 2013, Karoubi et al. 2016, Baile and Patle 2011), although topographical arrangement and number of telencephalic cell masses exhibit variation in different species. The results raise the question to what extent the organization of the cleaners' brain differs from that of closely related fish species that do not clean. More detailed analyses of the volumes of different nuclei and regions may eventually yield some hypotheses.

As it stands, Labridae are the most common family on coral reefs (Westneat and Alfaro, 2005). The family is large and diverse, with over 600 species in 82 genera. They are the second largest family of marine fish and one of the most diverse morphologically, behaviorally and ecologically. The diversity of family Labridae attracts considerable interest in scientists studying ecology and evolution of this group, life history and biomechanics, often linked to the evolution of cleaning behaviour (Clements et al. 2004; Ferreira et al. 2004; Rocha et al. 2004; Westneat and Alfaro, 2005; Baliga & Law 2016; Baliga & Mehta 2016).

One possibility is that brain structure does not differ much between closely related species but that receptor densities and gene expression patterns change according to ecological needs. Indeed, there is first evidence from transcriptomic analyses that there are specific gene networks associated with cleaning activity (Young et al. 2022; Kang et al. 2023). The former analysis was based on two telencephalic nodes of the Social Decision-Making Network, the medial (DI; lateral part of the dorsal telencephalon) and the lateral pallium (area Dm; medial part of the dorsal telencephalon). The network is critical for evaluating stimulus salience and regulating sexual, aggressive, and parental behavior across vertebrates (Goodson 2004; O'Connell & Hofmann 2011, 2012). We sincerely hope that our atlas will help identifying such nodes as well as other telencephalic areas in wrasse for further comparisons. Furthermore, the atlas provides a starting point for explanations for the reported intraspecific variation in the behavior and cognitive performance of *L. dimidiatus* individuals (Wismer et al. 2014, 2018; Binning et al. 2017; Triki et al. 2018, 2019, 2020).

Future comparative research on the links between fish brain features and cognitive performance will depend on the availability of brain atlases, as well as a characterization of cell types, cell densities, receptors, and gene activity patterns. Thus, our telencephalon atlas for *L. dimidiatus* is just a first step, especially as recent research indicates that different major brain regions may be important for the cognitive performance in the same task depending on the species: for example, intraspecific variation in performance in reversal learning as a measure of cognitive flexibility and a detour task as a measure of self-control was correlated with telencephalon size in guppies and with the mesencephalon and cerebellum in cichlids *Neolamprologus pulcher* (Triki et al. 2023; Guadagno and Triki 2023). Nevertheless, given the similarities described above between the *L. dimidiatus* and other teleost fish, the atlas can be used with caution as a reference guide for investigators starting to work in other wrasse models. Apparently, a reference genome for *L. dimidiatus* is also about to be established (José Paula, pers comm). There is thus potential that *L. dimidiatus* becomes a model organism for highly integrative behavioural research on wrasse.

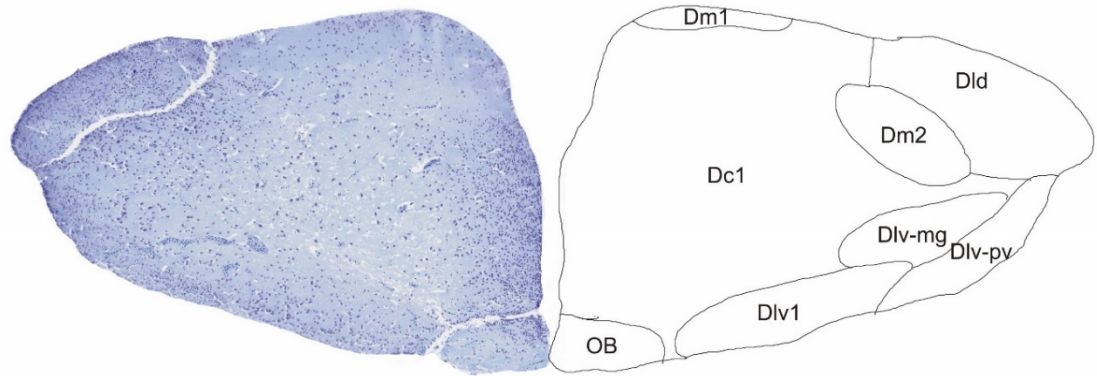


Fig. 1. Transverse section of *L. dimidiatus* telencephalon

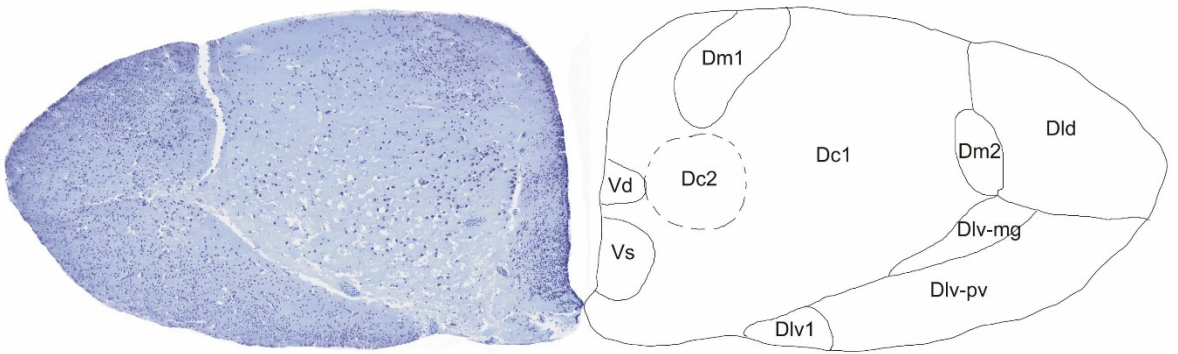


Fig. 2. Transverse section of *L. dimidiatus* telencephalon

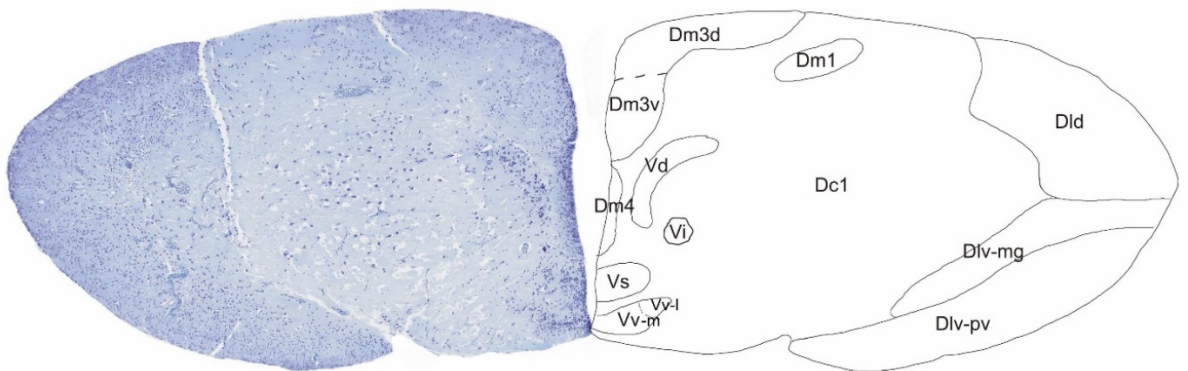


Fig. 3. Transverse section of *L. dimidiatus* telencephalon

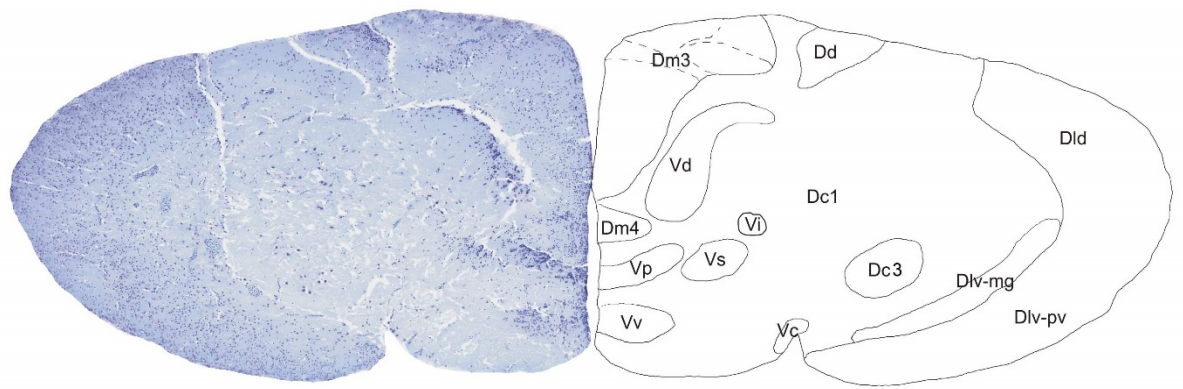


Fig. 4. Transverse section of *L. dimidiatus* telencephalon

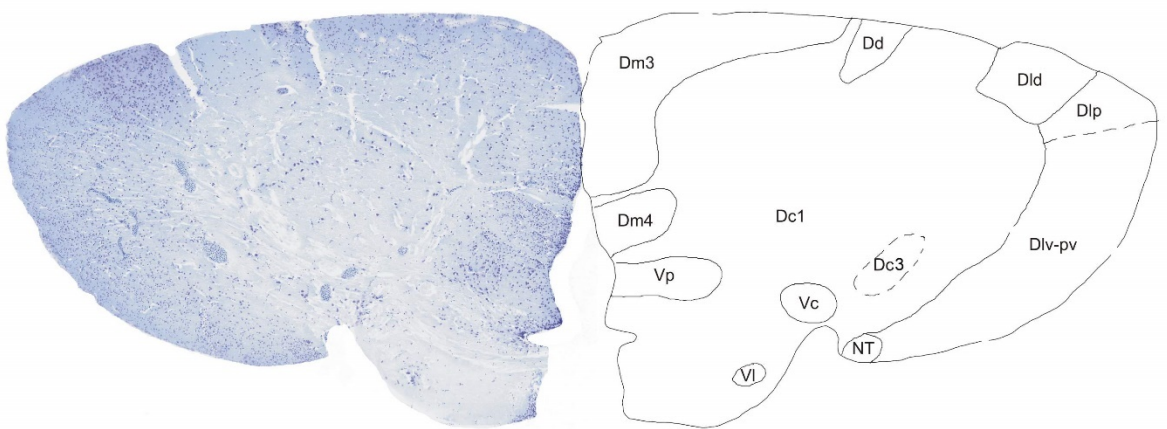


Fig. 5. Transverse section of *L. dimidiatus* telencephalon

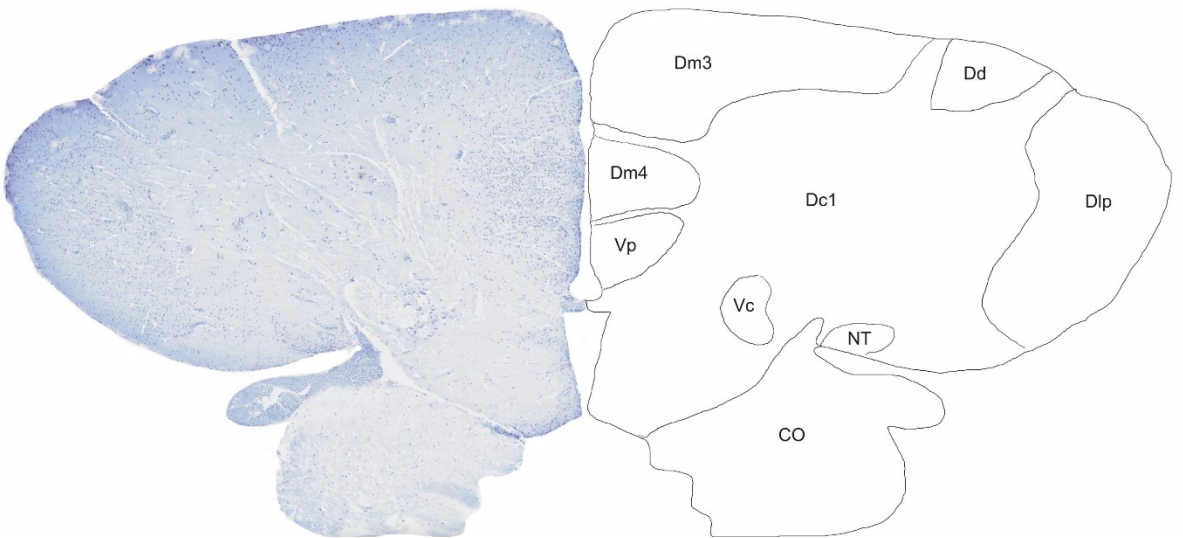


Fig. 6. Transverse section of *L. dimidiatus* telencephalon

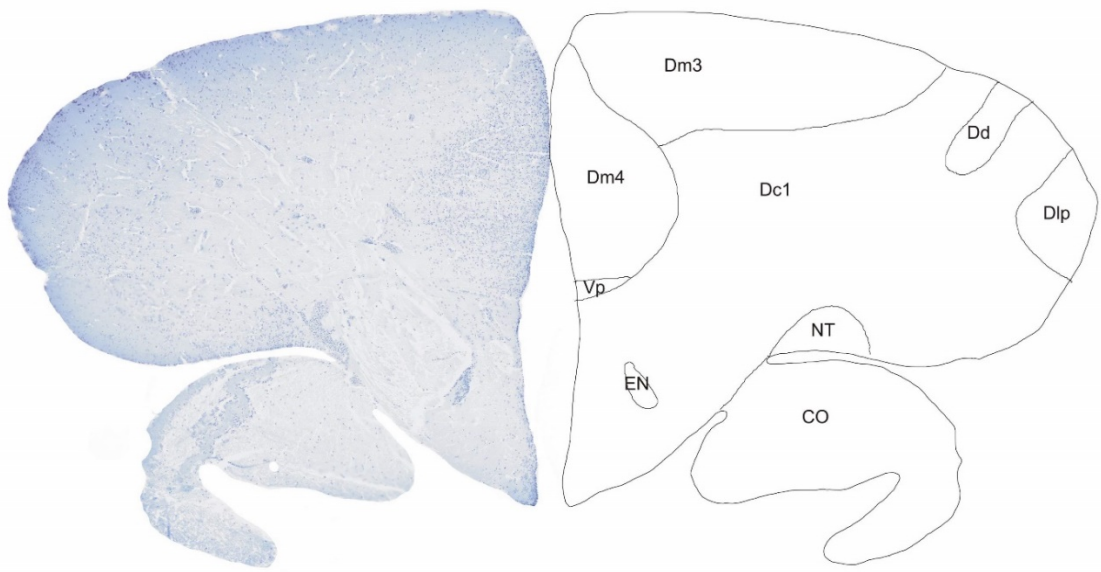


Fig. 7. Transverse section of *L. dimidiatus* telencephalon

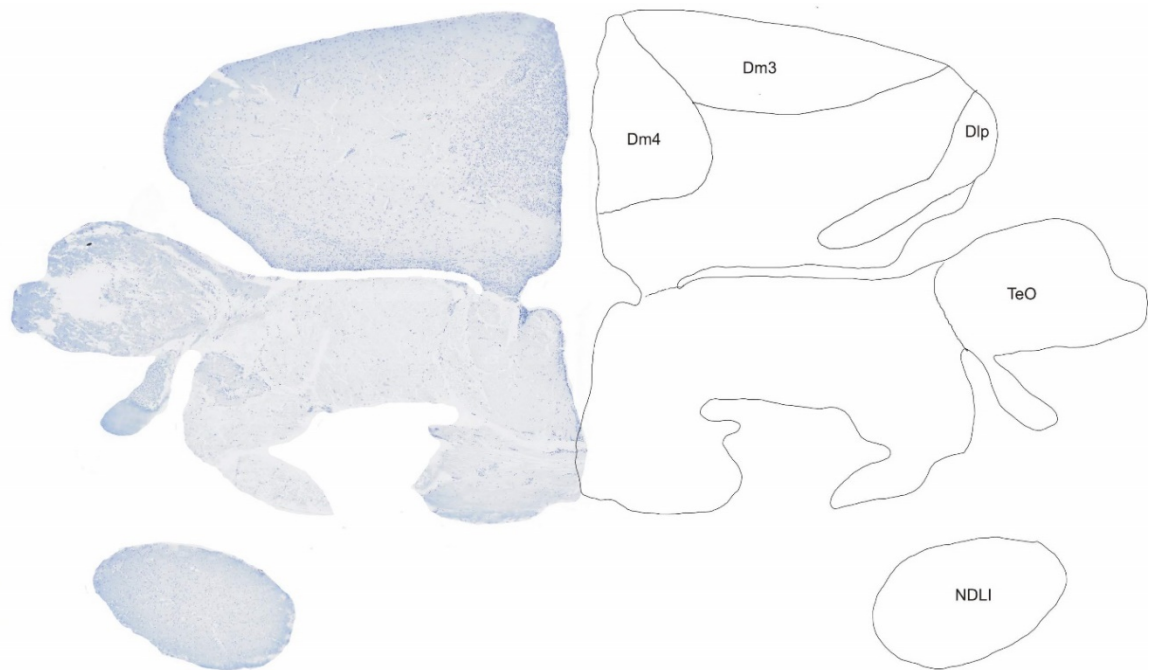


Fig. 8 Transverse section of *L. dimidiatus* telencephalon



Fig. 9. Transverse section of *L. dimidiatus* telencephalon

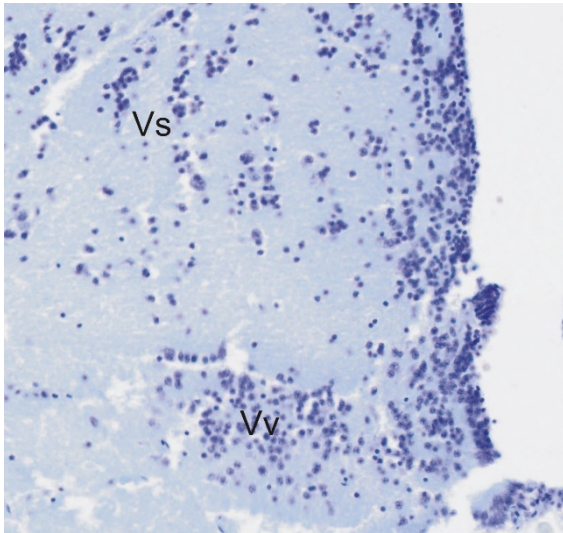


Fig. 10. Microphotography of transverse section of *L. dimidiatus* telencephalon showing nuclei Vs and Vv

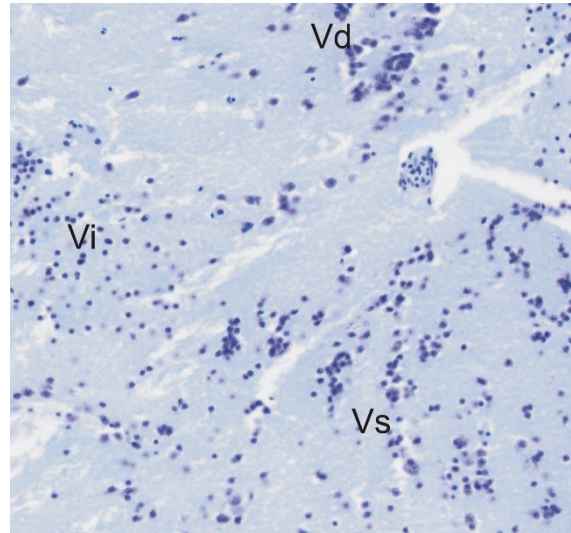


Fig. 11. Microphotography of transverse section of *L. dimidiatus* telencephalon showing nuclei Vd, Vs and Vi

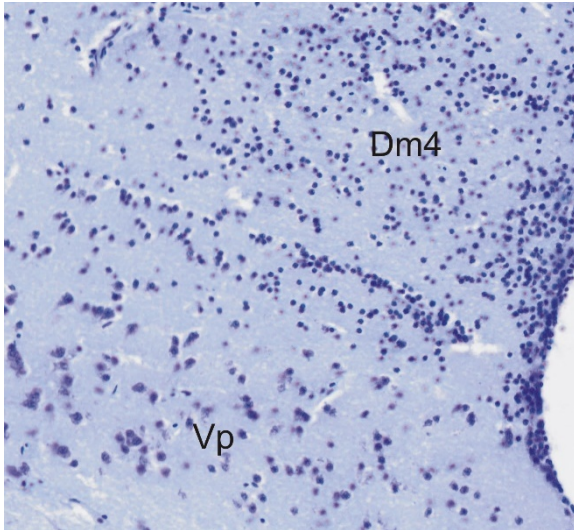


Fig. 12. Microphotography of transverse section of *L. dimidiatus* telencephalon showing nuclei Vp and region Dm4

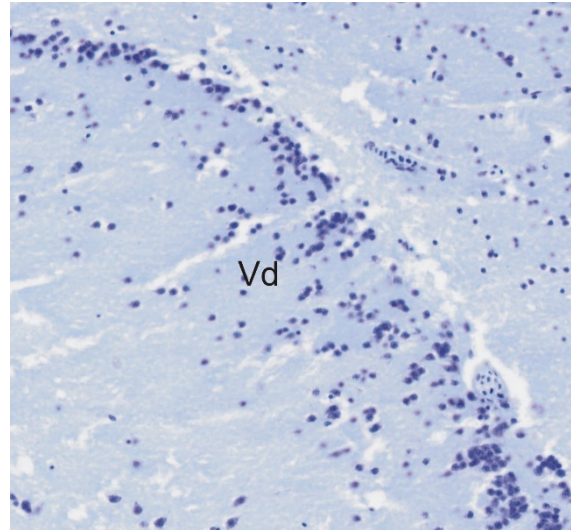


Fig. 13. Microphotography of transverse section of *L. dimidiatus* telencephalon showing nuclei Vd

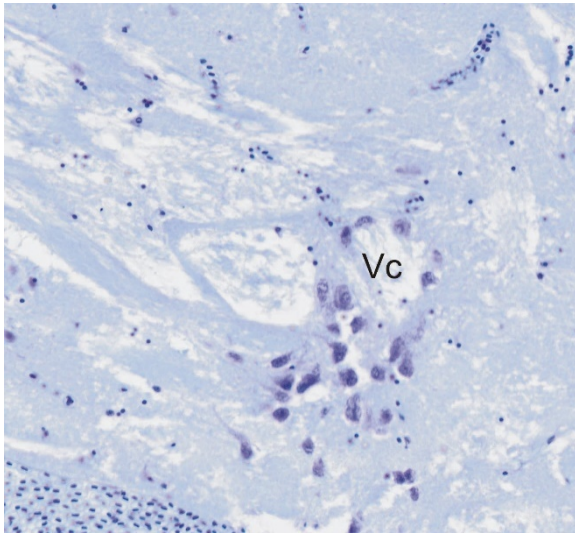


Fig. 14. Microphotography of transverse section of *L. dimidiatus* telencephalon showing nuclei Vc

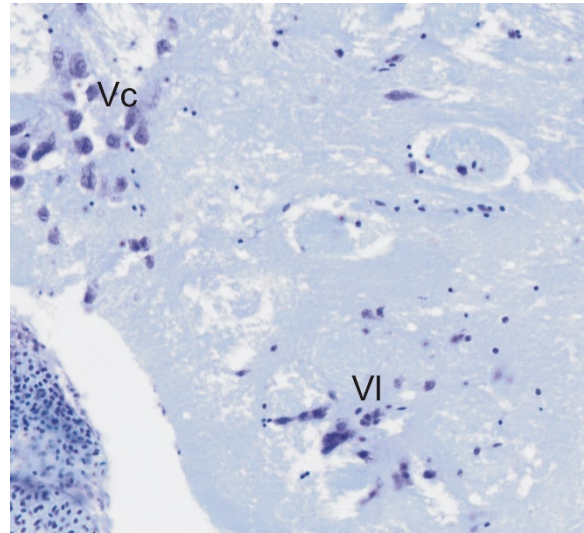


Fig. 15. Microphotography of transverse section of *L. dimidiatus* telencephalon showing nuclei Vc and VI

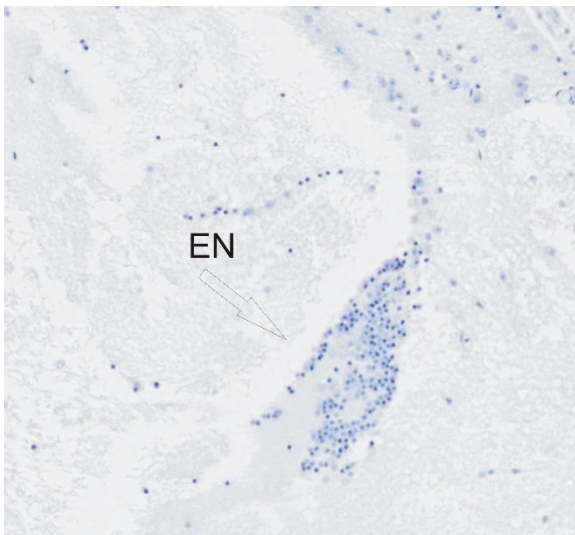


Fig. 16. Microphotography of transverse section of *L. dimidiatus* telencephalon showing nucleus entopeduncularis EN

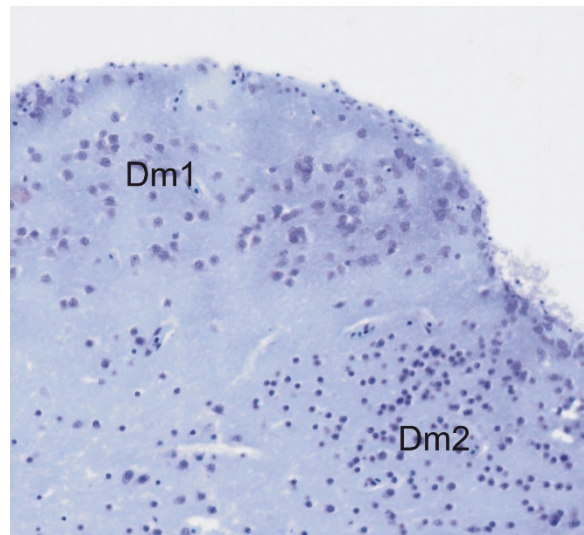


Fig. 17. Microphotography of transverse section of *L. dimidiatus* telencephalon showing regions Dm1 and Dm2

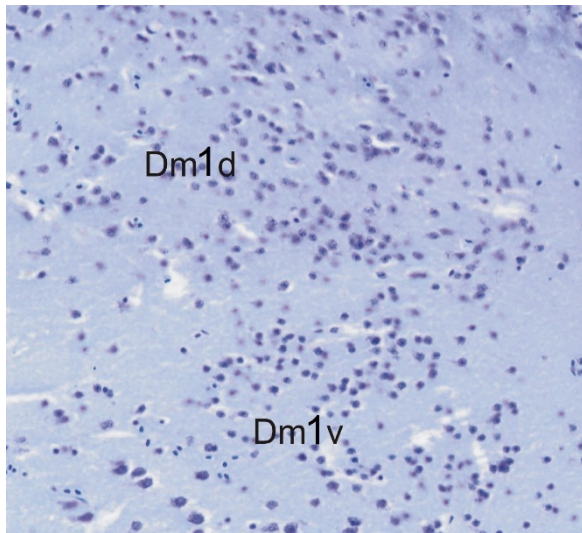


Fig. 18. Microphotography of transverse section of *L. dimidiatus* telencephalon showing subregions Dm1d and Dm1v

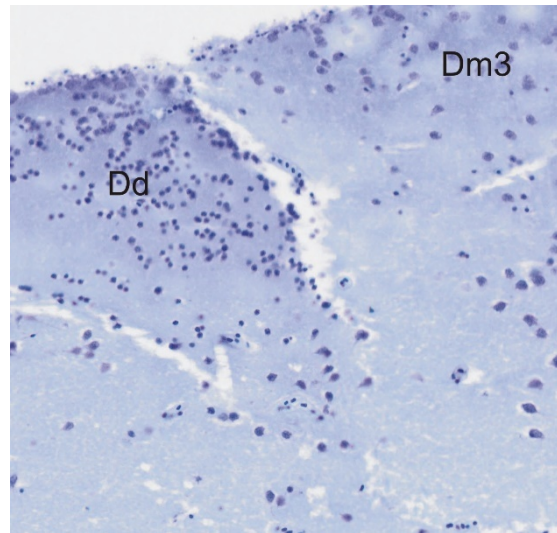


Fig. 19. Microphotography of transverse section of *L. dimidiatus* telencephalon showing region Dm3 and area Dd

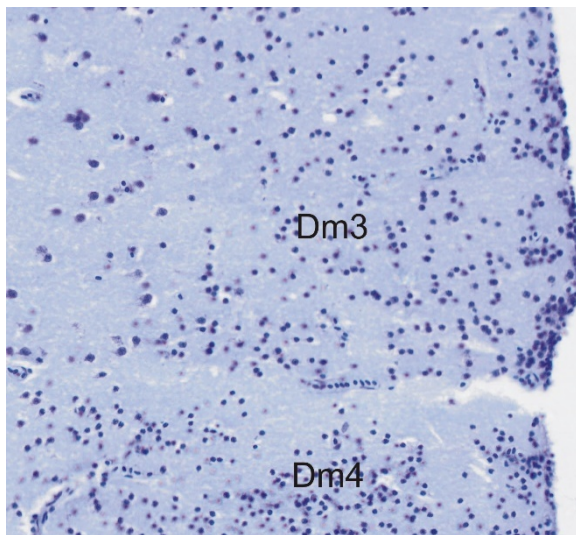


Fig. 20. Microphotography of transverse section of *L. dimidiatus* telencephalon showing regions Dm3 and Dm4

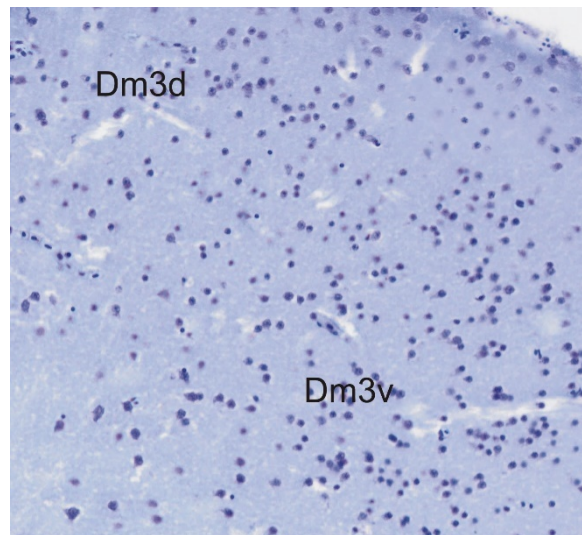


Fig. 21. Microphotography of transverse section of *L. dimidiatus* telencephalon showing subregions Dm3d and Dm3v

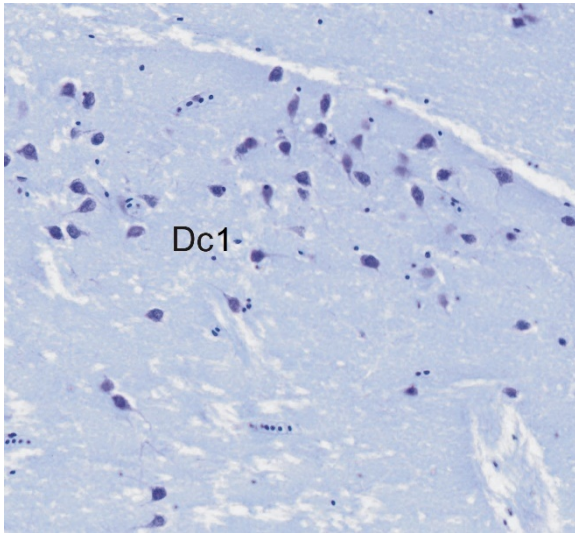


Fig. 22. Microphotography of transverse section of *L. dimidiatus* telencephalon showing region Dc1

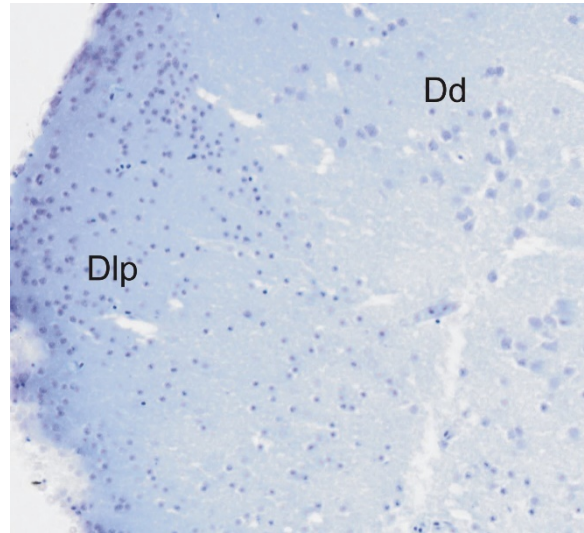


Fig. 23. Microphotography of transverse section of *L. dimidiatus* telencephalon showing area Dd and region Dlp

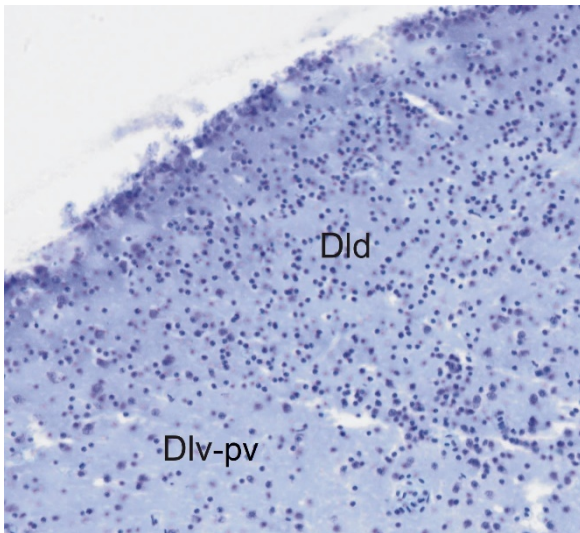


Fig. 24. Microphotography of transverse section of *L. dimidiatus* telencephalon showing region Dld and subregion Dlv-pv

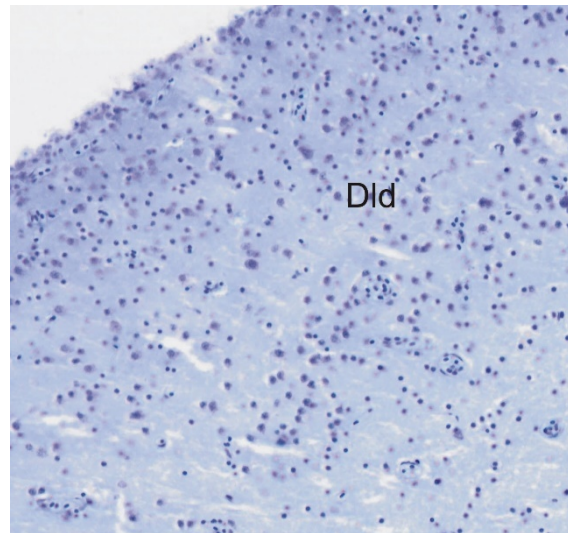


Fig. 25. Microphotography of transverse section of *L. dimidiatus* telencephalon showing region Dld

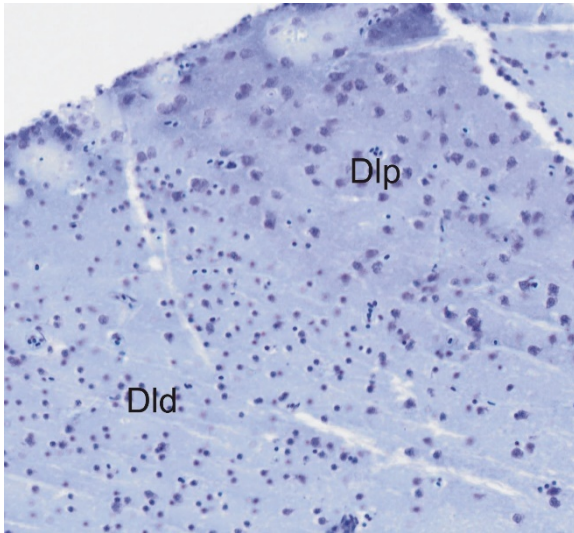


Fig. 26. Microphotography of transverse section of *L. dimidiatus* telencephalon showing region Dld and Dlp

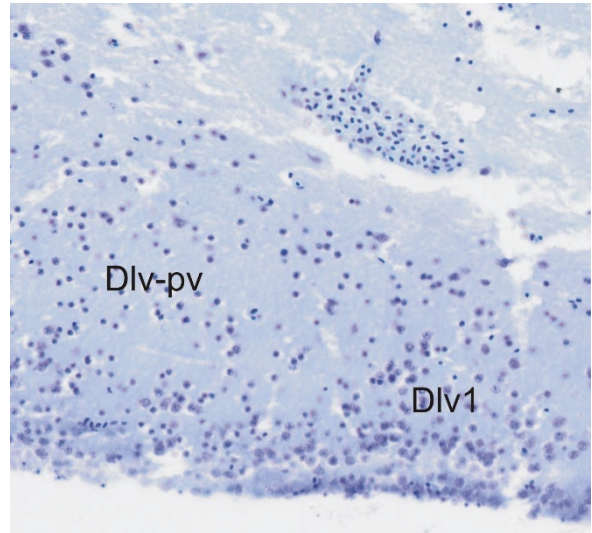


Fig. 27. Microphotography of transverse section of *L. dimidiatus* telencephalon showing subregions Dlv-pv and Dlv1

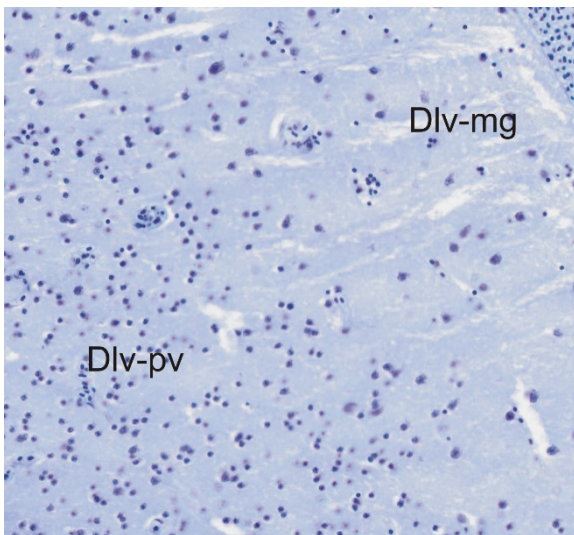


Fig. 28. Microphotography of transverse section of *L. dimidiatus* telencephalon showing subregions Dlv-pv and Dlv-mg

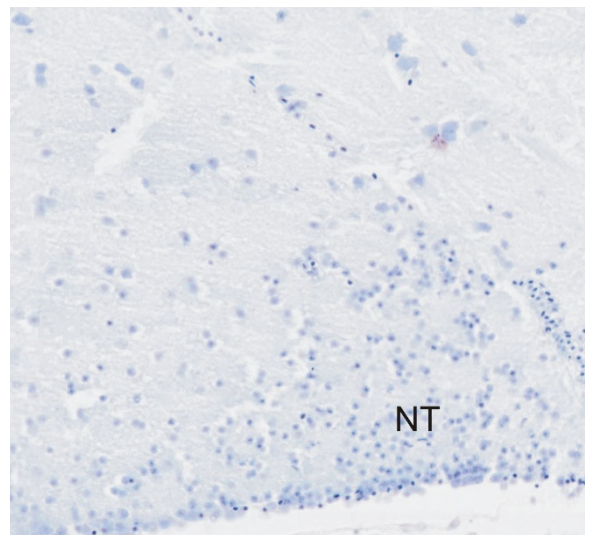


Fig. 29. Microphotography of transverse section of *L. dimidiatus* telencephalon showing nucleus taeniae NT

Tab 1. Nomenclature of *Labroides dimidiatus* nuclei and regions of the telencephalon.

D	dorsal part of the telencephalon
Dc	central area of dorsal telencephalon
Dd	dorsal area of dorsal telencephalon
DI	lateral area of dorsal telencephalon
Dld	dorsal region of the lateral area of dorsal telencephalon
Dlp	posterior region of the lateral area of dorsal telencephalon
Dlv	ventral region of the lateral area of dorsal telencephalon
Dlv1	subregion 1 of the ventral region of the lateral area of dorsal telencephalon
Dlv-mg	subregion magnocellularis of the ventro-lateral area of dorsal telencephalon
Dlv-pv	subregion parvocellularis of the ventro-lateral area of dorsal telencephalon
Dm	medial area of dorsal telencephalon
Dm1	region 1 of the medial area of dorsal telencephalon
Dm1d	dorsal subregion of the region 1 of the medial area of dorsal telencephalon
Dm1v	ventral subregion of the region 1 of the medial area of dorsal telencephalon
Dm2	region 2 of the medial area of dorsal telencephalon
Dm2d	dorsal subregion of the region 2 of the medial area of dorsal telencephalon
Dm2v	dorsal subregion of the region 2 of the medial area of dorsal telencephalon
Dm3	region 3 of the medial area of dorsal telencephalon
Dm3d	dorsal subregion of the region 3 of the medial area of dorsal telencephalon
Dm3v	dorsal subregion of the region 3 of the medial area of dorsal telencephalon
Dm4	region 4 of the medial area of dorsal telencephalon
Dp	posterior area of dorsal telencephalon
EN	entopeduncular nucleus
GCL	granular cell layer of the olfactory bulb
GL	glomerular layer of the olfactory bulb
NT	nucleus taeniae
OB	olfactory bulb

Sy	sulcus ypsiloniformis
V	ventral part of the telencephalon
Vc	nucleus commissuralis of the ventral part of the telencephalon
Vd	dorsal nucleus of the ventral part of the telencephalon
VI	nucleus lateralis of the ventral part of the telencephalon
Vp	nucleus postcommissuralis of the ventral part of the telencephalon
Vs	nucleus supracommissuralis of ventral part of the telencephalon
Vv	ventral nucleus of the ventral part of the telencephalon
Vv-1	subnucleus 1 of the ventral nucleus of the ventral part of the telencephalon
Vv-m	medial subnucleus of the ventral nucleus of the ventral part of the telencephalon

Tab. 2. List of species in which the analysis of telencephalon was conducted with the nuclei and regions recognized and nomenclature used.

	OB	Vd	Vs	Vx	Vp	Vi	Vl	Vn	Vc	EN	Dm	Dc	Dl	Dd	Dp	NT	LSO
<i>Polypterus senegalus</i>	OB	Vd		Vx			Vl	Vn			DMPd DMPy DMPc		DLPm DLEl				
<i>Polypterus palmas</i>	ICL SOF ECL GL ON	Vd	Vs	Vx	Vp	Vi	Vl	Vn		Ed Ex Ec	DMPy (P1-v) DMPd (P1-d)		P3?	P2?			NOT
<i>Lepisosteus osseus</i>	ICL SOF ECL GL ON	Vd	Vs	Vx	Vp	Vi	Vl	Vn		Er Ec	Dm		Dl	Dd	Dp	NT	
<i>Anguilla japonica</i>	ICL ECL GL	Vd	Vs	Vx	Vp	Vi	Vl				Dm	Dc	Dl Dld Dlv	Dd			
<i>Barbus meridionalis</i>		Vd	Vs	Vx	Vp	Vi				NE	Dma Dmp Dmpd Dmpv	Dcm Dcd Dcl	Dl Dld Dlv Dlp	Dd		NT	
<i>Carassius auratus</i>		Vd	Vs	Vx	Vp	Vi	Vl			NE	Dm	Dc	Dl Dlv Dld	Dd		NT	

<i>Tinca tinca</i>		Vd	Vs	Vx		Vi	Vl			NE	Dm	Dc	Dl	Dd			
<i>Danio rerio</i>	POF GL ECL ICL	Vd		Vx	Vp	Vi	Vl1 Vl2		Vc	ENy ENd	Dm	Dc	Dl	Dd	Dp	NT	
<i>Gymnotus carapo</i>	ICL	Vd	Vs	Vx	Vp	Vi	Vl		Vc	Er	DM1 DM2v DM2c	DC	Dlv Dld Dlp	DD DDmg	DP	nT	
<i>Apteronotus leptorhynchus</i>	ICL	Vd	Vs	Vx	Vp	Vi Vld Vir	Vl	Vn	Vc	Er Ec	DM1 DM2r DM2v DM2c Dm2d	DC	Dld Dlv Dlp	DD DDs DDi DDmg	DP DPl DPm	nT	
<i>Ictalurus punctatus</i>	ICL SOF MCL GL ON	Vd Vd-d Vd-v	Vs	Vx Vx-v Vx-d	Vp	Vi	Vl	Vn	Vc	Ed Ex	DM	DC-1 DC-2 DC-3	Dld Dlv Dlp	Dd	DP DPt DPc	NT	
<i>Salmo gairdneri</i>	ICL SOF ECL GL	Vd	Vs	Vx	Vp	Vi	Vl		Vc	E	Dm Dm-1 Dm-2 Dm-3 Dm-4	Dc	Dl-d Dl-v Dl-p	Dd (Dd + Dl-d)	Dp	NT	
<i>Oncorhynchus keta</i>		Vd		Vx		Vir	St?				Dm2d Dm2v	Dc	Dl	Dd		nT	

<i>Onyzias latipes</i>		Vd	Vs	Vx	Vp	Vi	Vl			NE	Dm vDm dDm	De	Dl dDl vDl		Dp			
<i>Fundulus heteroclitus</i>	TN GL ON	Vd	Vs	Vx	Vp		Vl			NE	Dm	De Ded	Dl Dl Dlv Dld	Dd		NT		
<i>Xiphophorus helleri</i>		Vd	Vs	Vx	Vp	Vi	Vl		Vc	E	Dm1 Dm2 Dm3 Dm4	De De1 De2 De3 De4	Dlv Dld Dl Dlp	Dd	Dp	NT	ON?	
<i>Nothobranchius furzeri</i>	ECL ICL GL	Vd	Vs	Vx	Vp		Vl		Vc	Ed Ey	Dm1 Dm2 Dm3 Dm4	De1 De2 De3 De4	Dld Dlv Dl	Dd		NT		
<i>Sebasticus marmoratus</i>		Vd	Vs		Vp	Vi	Vl				dDm vDm	De	dDl vDl	Dd	Dp			
<i>Paraliparis devriesi</i>	ICL ECL SOF GL	Vd		Vx			Vl		Vc	E	Dm	De	Dl	Dd	Dp			
<i>Toxotes chatareus</i>	GL ICL pof	Vd	Vs	Vx	Vp		Vl		Vc	EN	Dmd Dmv	De	Dld Dlv Dlp	Dd	Dp		LSO	
<i>Dolloidraça longedorsalis</i>		Vd	Vs	Vm?			Vl				Dm	De	Dl	Dd	Dp	NT		

<i>Rivacichthys aspro</i>		v.d.		v.v.			v.l			Ne	d.m.	d.c.	d.l	d.d.	d.p.			N.i.
<i>Betta splendens</i>	Isl	Vd	Vs	Vx	Vp	Vi	Vl		Vc	NE	Dmd Dmv	De1 De2 De3 De4	Dlv Dld Dlp	Dd	Dp	NT		
<i>Channa gachua</i>	GCL MCL GL ONL	Vd	Vs	Vx	Vp	Vi	Vl		Vc	NE	Dm1 Dm2 Dm3 Dm4	De1 De2	Dld Div1 Div2 Dld Dlp	Dd	Dp	NT	LSO	
<i>Oreochromis mosambicus</i>	BOgl BOgra	Vd	Vs	VVm							DMa DMdd DMdv DMvd DMvx		DLs DLv DLd DLP	DD	Dp			DA
<i>Oreochromis niloticus</i>					Vp	Vi				E	dDm vDm		Dl		Dp			
<i>Astatotilapia (Haplochromis) burtoni</i>		Vd	Vs- IVs-m	Vx	Vp	Vi	Vl		Vc		Dm-1 Dm-2r Dm-2c Dm3	De-1 De-2 De-3 De-4 De-5	Dl-d Dl-v1 Dl-v2 Dl-g	Dd-d Dd-v	Dp	NT		Dx
<i>Labroides dimidiatus</i>	GCL GL	Vd	Vs	Vx Vx-m Vv1	Vp	Vi	Vl		Vc	EN	Dm1 Dm1d Dm1v Dm2 Dm3 Dm3d Dm3v Dm4	De1 De2 De3	Dlv1 Dlv-pv Dlv-mg Dld Dlp	Dd	NT			

<i>Lepomis cyanellus</i>	ICL SOF ECL GL ON TN	Vd	Vs	Vx	Vp	Vi	Vl	Vc	NE (E)	Dmd Dmv (Dm-1 Dm-2 Dm-3 Dm-4)*	(Dc-1 Dc-2 Dc-3 Dc-4)	Dld Dlv Dlp (Dl-d Dl-v Dl-p)*	Dd	Dp	NT		
<i>Dicentrarchus labrax</i>	OLN GL ECL SOF ICL	Vd	Vs	Vx	Vp	Vi	Vl	Vc	E		Dc1 Dc2	Dlv1 Dlv2 Dld Dlp	Dd	Dp	NT	LSO	
<i>Chaetodon multinctus</i>	ONF GL ECL SOF ICL	Vd	Vs	Vx	Vp	Vi	Vl	Vc	E	Dm1 Dm2 Dm3 Dm4	Dc1 Dc2	Dld Dlv1 Dlv2 Dlv3 Dlp Dx	Dd	Dp	NT		Vu
<i>Sparus aurata</i>	ICL SOF ECL OIN TNgc	Vd	Vs	Vx	Vp	Vi	Vl	Vc	NE	Dm1 Dm2 Dm3 (hypertrophy) Dm4	Dc1 Dc2	Dlv1 Dlv2 Dlv3 Dld Dlp	Dd	Dp	NT	LSO	
<i>Protopterus annectens</i>	ON G M P IG MZ		Sm			Si	Sl	Sc		Pv pi pd			pp				

OB – olfactory bulb

ECL – external cellular layer of olfactory bulb

GL, Gl, BOgl, G, GCL – glomerular layer of the olfactory bulb

ICL, Icl – internal cellular layer of olfactory bulb

IG, BOgra – granular layer of the olfactory bulb

M, MI - Mitral cell layer of the olfactory bulb

MCL, OIN, TNgc, OLN, ONL – additional divisions of the OB

MZ – marginal zone of the olfactory bulb

ON – olfactory nerve layer of the olfactory bulb olfactory nerve fibers

P - internal plexiform layer of the olfactory bulb

POF, pof – primary olfactory fiber layer

SOF – secondary olfactory fiber layer of the olfactory bulb

Vd, v.d. – dorsal nucleus of the ventral telencephalon (subnuclei Vd-v, Vd-d)

Vs, IVs-m, Sm, – supracommissural nucleus of the ventral telencephalon (subnuclei Vs-l, Vs-m)

Vv, v.v., VVm, Vm –ventral nucleus of the ventral telencephalon (subnuclei Vv-d, Vv-v)

Vp, VP, - postcommissural nucleus of the ventral telencephalon

Vi, Vir, Si, VI, N.i.– nucleus intermedius of the ventral telencephalon (subnuclei VId Vir)

VI, v.l., Sl, L. - lateral nucleus of the ventral telencephalon

Vn - 'nother nucleus of ventral telencephalon

Vc, Sc –commissural nucleus of the ventral telencephalon

EN, N.e., n.e., NE, E – Entopeduncular nucleus (subnuclei Ed, Ev, Er, Ec)

Dm, Dm (1, 2, 3, 4) D.m. d.m. DM1 Dm-1 – medial area of the dorsal telencephalon (subdivisions Dma, Dmd, dDm, Dmv, vDm, DMdd, DMdv, DMvd, DMvy, Dmp, Dmpd, Dmpv, Dm-2r, Dm-2c, DM2c, Dm2d, DM2r, Dm2v, DM2v)

Dc, d.c. – central area of the dorsal telencephalon (subdivisions Dc1, Dc2, Dc3, Dc, Dcd, Dcl, Dcm)

DI, d.l. – lateral area of the dorsal telencephalon (subdivisions Dld, DI-d, d-DI, DLd, Dlv, Dlv1, Dlv2, Dlv3, DI-v, vDI, DI-v1, DI-v2, Dlp, DI-p, DLp, DLPm, DLPI, DI, DI-g, DLs, DLa)

Dd, DD, D-d, d.d., pp. – dorsal area of the dorsal telencephalon (subdivisions DDmg, DDs, DDi, Dd-d Dd-v)

Dp, D.p. d.p. – posterior area of the dorsal telencephalon

NT, nT, TN– nucleus taeniae

LSO – lateral septal organ

P2 – second pallial zone

P3 – third pallial zone

pd - Pars dorsalis of the medial pallium

pi - Pars intermedius of the medial pallium

pp - pars profundus of the rostral dorsal pallium

ps - pars superficialis of the rostral dorsal pallium

pv - Pars ventralis of the medial pallium

Sc - central subpallium

Si - superficial isthmic nucleus

Sl - lateral subpallium

Sm - medial subpallium

DA – anterior part of the dorsal telencephalon

Dx – large-cell division of the lateral zone of the dorsal telencephalon

LP - lateral pallium

MP - medial pallium

NOT – nucleus of the olfactory tract

Tab. 3. List of species organized according to phylogenetic relationships in which the analysis of the telencephalon was conducted.

Actinopterygii
 Cladistia
 Polypteriformes
 Polypteridae *Polypterus senegalus* (Reiner and Northcutt, 1992)
 Polypterus palmas (Reiner and Northcutt, 1992)

Neopterygii
 Lepisosteiformes
 Lepisosteidae *Lepisosteus osseus* (Northcutt and Braford, 1980)

Teleostei
 Anguiliformes
 Anguilidae *Anguilla japonica* (Makuda and Ando, 2003)

Cypriniformes
 Cyprinidae *Barbus meridionalis* (Diez et al., 1987)
 Carassius auratus (Peter and Gill, 1975)
 Tinca tinca (Arevalo et al., 1992)
 Danio rerio (Wullimann, 1996)

Gymnotiformes
 Gymnotidae *Gymnotus carapo* (Corrêa et al., 1998)
 Apteronotidae *Apteronotus leptorhynchus* (Maler et al., 1991)

Siluriformes

Ariidae *Ictalurus punctatus* (Bass, 1981)
 Salmoniformes
 Salmonidae *Salmo gairdneri* (Northcutt and Braford, 1980)
 Oncorhynchus keta (Pushina et al., 2003)
 Beloniformes
 Adrianichthyidae *Oryzias latipes* (Ishikawa et al. 1999)
 Cyprinodontiformes
 Fundulidae *Fundulus heteroclitus* (Peter et al., 1975)
 Poeciliidae *Xiphophorus helleri* (Anken and Rahmann, 1994)
 Aplocheilidae *Nothobranchius furzeri* (D'Angelo 2013)
 Scorpaeniformes
 Scorpaenidae *Sebasticus marmoratus* (Murakami et al., 2005)
 Liparidae *Paraliparis devriesi* (Eastman and Lanoo, 1998)
Perciformes
 Toxotidae *Toxotes chatareus* (Karoubi et al 2016)
 Artedidraconidae *Dolloidraco longedorsalis* (Eastman and Lanoo, 2003)
 Rhyacichthyidae *Rhyacichthys aspro* (Bauchot et al., 1989)
 Osphronemidae *Betta splendens* (Marino-Neto and Sabbatini, 1988)
 Channidae *Channa gachua* (Baile and Patle 2011)
 Cichlidae *Oreochromis mosambicus* (Simoes et al. 2012)
 Oreochromis niloticus (Yoshimoto et al 1998)
 Astatotilapia (Haplochromis) burtoni (Burmeister et all 2009)
 Labridae *Labroides dimidiatus*
 Centrarchiformes
 Centrarchidae *Lepomis cyanellus* (Northcutt and Braford, 1980)
 Moroniformes
 Moronidae *Dicentrarchus labrax* (Cerdá-Reverter et al., 2001)
 Chaetodontiformes
 Chaetodontidae *Chaetodon multicinctus* (Dewan and Tricas 2013)
 Spariformes
 Sparidae *Sparus aurata* (Munoz-Cueto et al., 2001)

 Sarcopterygii
 Ceratodontiformes
 Protopteridae: *Protopterus annectens* (Reiner and Northcutt, 1987)

References

1. Aellen, M., Burkart, J. M., and Bshary, R. (2022). No evidence for general intelligence in a fish. *Ethology*, 128(5), 424-436.
2. Aellen, M., Dufour, V., and Bshary, R. (2021). Cleaner fish and other wrasse match primates in their ability to delay gratification. *Animal Behaviour*, 176, 125-143.
3. Alvarado, S., Lenkov, K., Williams, B., Fernald R. D. (2015) Social crowding during development causes changes in GnRH1 DNA methylation, *PlosOne* 10(10): e0142043. doi:10.1371/journal.pone.0142043
4. Anken, R. H., Rahmann, H. (1994). Brain atlas of the adult swordtail fish *Xiphophorus helleri* and of certain developmental stages. Stuttgart: Fisher.
5. Arevalo, R., Alonso, J. R., Brinon, J. G., Garcia-Ojeda, E., Velasco, A., Lara, J., Aijon, J. (1992). An atlas of the brain of the tench (*Tinca tinca* L. 1758; Cyprinidae, Teleostei). *Journal für Hirnforschung*, 33, 487-497.

6. Aronson, L. R. (1971). Further studies on orientation and jumping behavior in the gobiid fish, *Bathygobius soporator*. *Annals of the New York Academy of Sciences*, 188, 378-392.
7. Baile, V. V., and Patle, P. J. (2011). Cytoarchitectonic study of the brain of a dwarf snakehead, *Channa gachua* (Ham.). I. The telencephalon. *Fish physiology and biochemistry*, 37, 993-1004.
8. Baliga, V. B., and Law, C. J. (2016). Cleaners among wrasses: phylogenetics and evolutionary patterns of cleaning behavior within Labridae. *Molecular Phylogenetics and Evolution*, 94, 424-435.
9. Baliga, V. B., and Mehta, R. S. (2016). Ontogenetic allometry in shape and flexibility underlies life history patterns of labrid cleaning behavior. *Integrative and Comparative Biology*, 56(3), 416-427.
10. Bass, A. H. (1981). Organization of the telencephalon in the channel catfish, *Ictalurus punctatus*. *Journal of Morphology* 169:71-90.
11. Bauchot, R., Diagne, M., Ridet, J. M., Bauchot, M. L. (1989). The brain of *Rhyacichthys aspro* (Rhyacichthyidae, Gobioidae). *Japanese Journal of Ichthyology*, 36, 260-266.
12. Binning, S. A., Rey, O., Wismer, S., Triki, Z., Glauser, G., Soares, M. C., and Bshary, R. (2017). Reputation management promotes strategic adjustment of service quality in cleaner wrasse. *Scientific Reports*, 7(1), 1-9.
13. Binning, S. A., Shaw, A. K., and Roche, D. G. (2017). Parasites and host performance: incorporating infection into our understanding of animal movement. *Integrative and Comparative Biology*, 57(2), 267-280.
14. Broglio, C., Gómez, A., Durán, E., Salas, C., and Rodríguez, F. (2011). Brain and cognition in teleost fish. *Fish cognition and behavior*, 325-358.
15. Broglio, C., Rodríguez, F., and Salas, C. (2003). Spatial cognition and its neural basis in teleost fishes. *Fish and fisheries*, 4(3), 247-255.
16. Brown, C. (2015). Fish intelligence, sentience and ethics. *Animal cognition*, 18(1), 1-17.
17. Brown, C., Laland, K., and Krause, J. (2011). *Fish cognition and behavior*. John Wiley and Sons.
18. Bshary, R. (2002). Biting cleaner fish use altruism to deceive image-scoring client reef fish. *Proceedings of the Royal Society of London. Series B: Biological Sciences*, 269(1505), 2087-2093.
19. Bshary, R. (2010). Cooperation between unrelated individuals—a game theoretic approach. In *Animal behaviour: evolution and mechanisms* (pp. 213-240). Berlin, Heidelberg: Springer Berlin Heidelberg.
20. Bshary, R., Gingins, S., and Vail, A. L. (2014). Social cognition in fishes. *Trends in Cognitive Sciences*, 18, 465-471.
21. Bshary, R., Triki, Z. (2022). Fish ecology and cognition: insights from studies on wild and wild-caught teleost fishes. *Current Opinion in Behavioral Sciences* 46:101174.
22. Burkart, J. M., Schubiger, M. N. and van Schaik, C. P. (2016). The evolution of general intelligence. *Behavioral Brain Sciences* 1–65.
23. Burmeister, S. S., Munshi, R. G., and Fernald, R. D. (2009). Cytoarchitecture of a cichlid fish telencephalon. *Brain Behavior and Evolution*, 74(2), 110-120.
24. Butler, A. B. (1994). The evolution of the dorsal pallium in the telencephalon of amniotes: cladistic analysis and a new hypothesis. *Brain Research Reviews*, 19(1), 66-101.
25. Butler, A. B., and Hodos, W. (2005). *Comparative vertebrate neuroanatomy: evolution and adaptation*. John Wiley and Sons.

26. Castro, A., Becerra, M., Manso, M. J., and Anadón, R. (2006). Calretinin immunoreactivity in the brain of the zebrafish, *Danio rerio*: Distribution and comparison with some neuropeptides and neurotransmitter-synthesizing enzymes. I. Olfactory organ and forebrain. *Journal of comparative Neurology*, 494(3), 435-459.
27. Cerdá-Reverter, J. M., Zanuy, S., and Muñoz-Cueto, J. A. (2001). Cytoarchitectonic study of the brain of a perciform species, the sea bass (*Dicentrarchus labrax*). I. The telencephalon. *Journal of morphology*, 247(3), 217-228.
28. Chojnacka, D., Isler, K., Barski, J. J., and Bshary, R. (2015). Relative brain and brain part sizes provide only limited evidence that machiavellian behaviour in cleaner wrasse is cognitively demanding. *PLoS One*, 10(8), e0135373.
29. Clements, K. D., Alfaro, M. E., Fessler, J. L., and Westneat, M. W. (2004). Relationships of the temperate Australasian labrid fish tribe Odacini (Perciformes; Teleostei). *Molecular Phylogenetics and Evolution*, 32(2), 575-587.
30. Corrêa, S. A. L., Corrêa, F. M. A., Hoffman, A. (1998). Stereotaxic atlas of the telencephalon of the weakly electric fish *Gymnotus carapo*. *Journal of Neuroscience Methods*, 84, 93-100.
31. Côté, M. (2000). Evolution and ecology of cleaning symbioses in the sea. *Oceanography and Marine Biology in Annual Review*, 38, 311-355.
32. D'Angelo, L. (2013). Brain atlas of an emerging teleostean model: *Nothobranchius furzeri*. *Anatomical record* 296(4): 681-91.
33. Davies, D. C. (1995). Brain Atlas of the Adult Swordtail Fish *Xiphophorus helleri* and of Certain Developmental Stages. *Journal of Anatomy*, 186(Pt 3), 657.
34. Dewan, A. K., Tricas, T. C. (2013). Cytoarchitecture of the Telencephalon in the Coral Reef Multiband Butterflyfish (*Chaetodon multicinctus*: Perciformes). *Brain, Behavior and Evolution*, 84, 31-50.
35. Diez, C., Lara, J., Alonso, J. R., Miguel, J. J., and Aijon, J. (1987). Microscopic structure of the brain of *Barbus meridionalis* Risso. I. Telencephalon. *Journal fur Hirnforschung*, 28, 255-269.
36. Eastman, J. T., Lanoo, M. J. (1998). Morphology of the brain and sense organs in the snailfish *Paraliparis devriesi*: neural convergence and sensory compensation on the Antarctic shelf. *Journal of Morphology*, 237, 213-236.
37. Eastman, J. T., Lanoo, M. J. (2003). Anatomy and histology of the brain and sense organs of the Antarctic plunderfish *Dolloidraco longedorsalis* (Perciformes: Notothenioidei: Artedidraconidae), with comments on the brain morphology of other artedidraconids and closely related harpagiferids. *Journal of Morphology*, 255, 358-377.
38. Fernald, R. D. (2015) Social behaviour: Can it change the brain. *Animal Behaviour*, 103: 259-265 DOI 10.1016/j.anbhav.2015.01.019
39. Fernald, R.D. (2016) Decision making in fish: Genetics and social behavior, In: Decision Neuroscience, Eds. JC Reher and L Trembly.
40. Ferreira, C. E. L., Floeter, S. R., Gasparini, J. L., Ferreira, B. P., and Joyeux, J. C. (2004). Trophic structure patterns of Brazilian reef fishes: a latitudinal comparison. *Journal of Biogeography*, 31(7), 1093-1106.
41. Gingins, S., and Bshary, R. (2016). The cleaner wrasse outperforms other labrids in ecologically relevant contexts, but not in spatial discrimination. *Animal Behaviour*, 115, 145-155.

42. Grosenick, L., Clement, T. S., and Fernald, R. D. (2007). Fish can infer social rank by observation alone. *Nature*, 445(7126), 429-432.
43. Guadagno A., and Triki, Z. (2023). Executive functions and brain morphology of male and female dominant and subordinate cichlid fish. *EcoEvoRxiv* Preprint <http://doi.org/10.32942/X2303P>
44. Holmes, P. H., and Northcutt, R. G. (2003). Connections of the pallial telencephalon in the Senegal bichir, *Polypterus*. *Brain behavior and evolution*, 61(3), 113-147.
45. Hoppitt, W., and Laland, K. N. (2013). *Social learning: an introduction to mechanisms, methods, and models*. Princeton University Press.
46. Ishikawa Y., Yoshimoto M., Ito H. (1999). A brain atlas of a wild-type inbred strain of the medaka, *Oryzias latipes*. *Fish Biology Journal Medaka* 10: 1-26.
47. Jerison, H. J. (1971). More on why birds and mammals have big brains. *The American Naturalist*, 105(942), 185-189.
48. Jordan, A., Taborsky, B., and Taborsky, M. (2021). *Cichlids as a model system for studying social behaviour and evolution* (pp. 587-635). Springer Netherlands.
49. Jungwirth, A., Taborsky, M. (2015) First- and second-order sociality determine survival and reproduction in cooperative cichlids. *Proceedings of Royal Society B* 282: 20151971, doi:10.1098/rspb.2015.1971
50. Kang, J., Ramirez-Calero, S., Paula, J. R., Chen, Y., and Schunter, C. (2023). Gene losses, parallel evolution and heightened expression confer adaptations to dedicated cleaning behaviour. *BMC biology*, 21(1), 180.
51. Karoubi, N., Segev R., Wullimann, M.F. (2016). The Brain of the Archerfish *Toxotes chatareus*: A Nissl-Based Neuroanatomical Atlas and Catecholaminergic/Cholinergic Systems. *Frontiers in Neuroanatomy* 10 (6476)
52. Kohda, M., Sogawa, S., Jordan, A. L., Kubo, N., Awata, S., Satoh, S., Kobayashi, T., Fujita, A. and Bshary, R. (2022). Further evidence for the capacity of mirror self-recognition in cleaner fish and the significance of ecologically relevant marks. *PLoS biology*, 20(2), e3001529.
53. Kohda, M., Bshary, R., Kubo, N., Awata, S., Sowersby, W., Kawasaka, K., Kobayashi, T., and Sogawa, S. (2023). Cleaner fish recognize self in a mirror via self-face recognition like humans. *Proceedings of the National Academy of Sciences*, 120(7), e2208420120.
54. Kohda, M., Hotta, T., Takeyama, T., Awata, S., Tanaka, H., Asai, J. Y., and Jordan, A. L. (2019). If a fish can pass the mark test, what are the implications for consciousness and self-awareness testing in animals?. *PLoS biology*, 17(2), e3000021.
55. Krebs, J. R., Sherry, D. F., Healy, S. D., Perry, V. H., and Vaccarino, A. L. (1989). Hippocampal specialization of food-storing birds. *Proceedings of the National Academy of Sciences*, 86(4), 1388-1392.
56. Laland, K. N. (2004). Social learning strategies. *Animal Learning and Behavior*, 32, 4-14.
57. Lein, E., and Jordan, A. (2021). Studying the evolution of social behaviour in one of Darwin's Dreamponds: a case for the Lamprologine shell-dwelling cichlids. *Hydrobiologia*, 848(16), 3699-3726.
58. López, J. C., Bingman, V. P., Rodríguez, F., Gómez, Y. and Salas, C. (2000). Dissociation of place and cue learning by telencephalic ablation in goldfish. *Behavioural Neurosciences*, 114, 687-699.
59. Loveland, J. L., and Fernald, R. D. (2017). Differential activation of vasotocin neurons in contexts that elicit aggression and courtship. *Behavioural brain research*, 317, 188-203.

60. Lucon-Xiccato, T., and Bisazza, A. (2017). Individual differences in cognition among teleost fishes. *Behavioural processes*, 141, 184-195.
61. Maguire, E. A., Gadian, D. G., Johnsrude, I. S., Good, C. D., Ashburner, J., Frackowiak, R. S., and Frith, C. D. (2000). Navigation-related structural change in the hippocampi of taxi drivers. *Proceedings of the National Academy of Sciences*, 97(8), 4398–4403.
62. Maguire, E. A., Nannery, R., and Spiers, H. J. (2006). Navigation around London by a taxi driver with bilateral hippocampal lesions. *Brain*, 129(11), 2894–2907.
63. Makuda, T., Ando, M. (2003). Brain atlas of the Japanese eel: comparison to other fishes. *Faculty of Integrated Arts and Science*, 29, 1-25.
64. Maler, L., Sas, E., Johnston, S., Ellis, W. (1991). An atlas of the brain of the electric fish *Apteronotus leptorhynchus*. *Journal of Chemical Neuroanatomy*, 4, 1-38.
65. Marino-Neto, J., Sabbatini, R. M. E. (1988). A stereotaxic atlas for the telencephalon of the Siamese fighting fish (*Betta splendens*). *Brazilian Journal of Medical Biological Resources*, 21, 971-986.
66. Mazzei, R., Lampe, M., Ohnesorge, A., Pajot, A., Soares, M. C., and Bshary, R. (2019). Ecological differences in the facultative Caribbean cleaning goby *Elacatinus prochilos* do not predict learning performance in discriminatory two-choice tasks. *Animal cognition*, 22, 1039-1050.
67. Mueller, T., and Wullimann, M. (2015). *Atlas of early zebrafish brain development: a tool for molecular neurogenetics*. Academic Press.
68. Muller, J. F., Mascagni, F., and McDonald, A. J. (2011). Cholinergic innervation of pyramidal cells and parvalbumin-immunoreactive interneurons in the rat basolateral amygdala. *Journal of Comparative Neurology*, 519(4), 790-805.
69. Munoz-Cueto, J. A. (2001). An atlas of the brain of the gilthead seabream (*Sparus aurata*). Maryland Sea Grant, College Park, Md.,
70. Murakami, T., Morita, Y., and Ito, H. (1983). Extrinsic and intrinsic fiber connections of the telencephalon in a teleost, *Sebastes marmoratus*. *Journal of Comparative Neurology*, 216(2), 115-131.
71. Nieuwenhuys, R. (2009). The forebrain of actinopterygians revisited. *Brain Behavior and Evolution*, 73(4), 229-252.
72. Nieuwenhuys, R., Ten Donkelaar, H. J., Nicholson, C., Meek, J., and Nieuwenhuys, R. (1998). Holosteans and teleosts. *The Central Nervous System of Vertebrates: Volume 1/Volume 2/Volume 3*, 759-937.
73. Northcutt, R. G., Braford, M. R. J. (1980). New observations on the organization and evolution of the telencephalon of actinopterygian fishes. In: Ebbesson SOE, editor. *Comparative Neurology of the Telencephalon*. New York: Plenum Press.
74. Northcutt, R. G. (2006). Connections of the lateral and medial divisions of the goldfish telencephalic pallium. *Journal of Comparative Neurology*, 494(6), 903-943.
75. Northcutt, R. G., and Braford Jr, M. R. (1980). New observations on the organization and evolution of the telencephalon of actinopterygian fishes. In *Comparative neurology of the telencephalon* (pp. 41-98). Boston, MA: Springer US.
76. O’Connell, L. A., and Hofmann, H. A. (2012). Evolution of a vertebrate social decision-making network. *Science*, 336(6085), 1154-1157.

77. O'Connell, L. A., and Hofmann, H. A. (2011). The vertebrate mesolimbic reward system and social behavior network: a comparative synthesis. *Journal of Comparative Neurology*, 519(18), 3599-3639.
78. Pepels, P. P., Meek, J., Wendelaar Bonga, S. E., and Balm, P. H. (2002). Distribution and quantification of corticotropin-releasing hormone (CRH) in the brain of the teleost fish *Oreochromis mossambicus* (tilapia). *Journal of Comparative Neurology*, 453(3), 247-268.
79. Peter, R. E., Gill, V. E. (1975). A stereotaxic atlas and techniques for forebrain nuclei of the goldfish, *Carassius auratus*. *Journal of Comparative Neurology*, 159, 69-102.
80. Peter, R. E., Macey, M. J., Gill, V. E. (1975). A stereotaxic atlas and techniques for forebrain nuclei of the killifish, *Fundulus heteroclitus*. *Journal of Comparative Neurology*, 159, 103-128.
81. Pinto, A., Oates, J. Grutter, A. Bshary, R. (2011). Cleaner wrasses *Labroides dimidiatus* are more cooperative in the presence of an audience. *Current Biology*, 21, 1140-1144.
82. Portavella, M., Vargas, J. P., Torres, B. and Salas, C. (2002). The effects of telencephalic pallial lesions on spatial, temporal, and emotional learning in goldfish. *Brain Research Bulletin* 57, 397-399.
83. Prat, Y., Bshary, R., and Lotem, A. (2022). Modelling how cleaner fish approach an ephemeral reward task demonstrates a role for ecologically tuned chunking in the evolution of advanced cognition. *PLOS Biology*, 20(1), e3001519. <https://doi.org/10.1371/journal.pbio.3001519>
84. Pravosudov, V. V., and Clayton, N. S. (2002). A test of the adaptive specialization hypothesis: population differences in caching, memory, and the hippocampus in black-capped chickadees (*Poecile atricapilla*). *Behavioral neuroscience*, 116(4), 515-522.
85. Prechtl, J. C., von der Emde, G., Wolfart, J., Karamürsel, S., Akoev, G. N., Andrianov, Y. N., and Bullock, T. H. (1998). Sensory processing in the pallium of a mormyrid fish. *Journal of Neuroscience*, 18(18), 7381-7393.
86. Pushina, E. V., Varaksin, A. A., Romanov, N. S. (2003). Neuronal organization of the telencephalon in the chum salmon *Onchorhynchus keta*. *Russian Journal of Marine Biology* 29(6):362-367.
87. Quiñones, A. E., Leimar, O., Lotem, A., and Bshary, R. (2020). Reinforcement learning theory reveals the cognitive requirements for solving the cleaner fish market task. *American Naturalist*, 195(4), 664-677. <https://doi.org/10.1086/707519>
88. Rao, P. P., and Finger, T. E. (1984). Asymmetry of the olfactory system in the brain of the winter flounder, *Pseudopleuronectes americanus*. *Journal of Comparative Neurology*, 225(4), 492-510.
89. Reiner, A., Northcutt, R. G. (1987). An immunohistochemical study of the telencephalon of the African lungfish, *Protopterus annectens*. *Journal of Comparative Neurology*, 256, 468-481.
90. Reiner, A., Northcutt, R. G. (1992). An immunohistochemical study of the telencephalon of the Senegal bichir (*Polypterus senegalus*). *Journal of Comparative Neurology*, 319, 359-386.
91. Riedel, G. (1997). The forebrain of the blind cave fish *Astyanax hubbsi* (Characidae) I. General anatomy of the telencephalon. *Brain, behavior and evolution*, 49(1), 20-38.
92. Rodriguez, F., López, J. C., Vargas, J. P., Broglio, C., Gómez, Y., and Salas, C. (2002). Spatial memory and hippocampal pallium through vertebrate evolution: insights from reptiles and teleost fish. *Brain research bulletin*, 57(3-4), 499-503.

93. Sakharkar, A. J., Singru, P. S., Sarkar, K., and Subhedar, N. K. (2005). Neuropeptide Y in the forebrain of the adult male cichlid fish *Oreochromis mossambicus*: distribution, effects of castration and testosterone replacement. *Journal of Comparative Neurology*, 489(2), 148-165.
94. Salwiczek, L. H., Prétôt, L., Demarta, L., Proctor, D., Essler, J., Pinto, A. I., ... and Bshary, R. (2012). Adult cleaner wrasse outperform capuchin monkeys, chimpanzees and orang-utans in a complex foraging task derived from cleaner–client reef fish cooperation. *PLoS One*, 7(11), e49068.
95. Schönherr, J. (1954). Über die Abhängigkeit der Instinkthandlungen vom Vorderhirn und Zwischenhirn (Epiphyse) bei *Gasterosteus aculeatus* L. *Zoologische Jahrbücher Abteilung für allgemeine Zoologie und Physiologie*, 65, 357–386
96. Seegar, J. (1956). Brain and instinct with *Gasterosteus aculeatus*. *Proceedings of the Koninklijke Nederlandse Akademie C59*, 738–749
97. Simões, J. M., Teles, M. C., Oliveira, R. F., Van der Linden, A., Verhoye, M. (2012). A three-dimensional stereotaxic MRI brain atlas of the cichlid fish *Oreochromis mossambicus*. *PLoS One* 7 (9).
98. Sherry, D. F., Vaccarino, A. L., Buckenham, K., and Herz, R. S. (1989). The hippocampal complex of food-storing birds. *Brain, behavior and evolution*, 34(5), 308-317.
99. Sherry, D. F., Forbes, M. R., Khurgel, M., and Ivy, G. O. (1993). Females have a larger hippocampus than males in the brood-parasitic brown-headed cowbird. *Proceedings of the National Academy of Sciences*, 90(16), 7839-7843.
100. Taborsky, M. (2013). Social evolution: reciprocity there is. *Current Biology*, 23, 486-488.
101. Triki, Z., Aellen, M., van Schaik, C. P., and Bshary, R. (2021). Relative brain size and cognitive equivalence in fishes. *Brain, Behavior and Evolution*, 96(3), 124-136.
102. Triki, Z. and Bshary, R. (2018). Cleaner fish *Labroides dimidiatus* discriminate numbers but fail a Mental Number Line test. *Animal Cognition*, 21, 99-107.
103. Triki, Z. and Bshary, R. (2020). Long-term memory retention in a wild fish species *Labroides dimidiatus* eleven months after an aversive event. *Ethology* 00, 1-5.
104. Triki, Z., Bshary, R. (2021). Sex differences in the cognitive abilities of a sex-changing fish species *Labroides dimidiatus*. *Royal Society Open Science*, 8, 210239.
105. Triki, Z., Emery, Y., Teles, M. C., Oliveira, R. F., and Bshary, R. (2020). Brain morphology predicts social intelligence in wild cleaner fish. *Nature Communications*, 11(1), 6423.
106. Triki, Z., Fong, S., Amcoff, M., and Kolm, N. (2022). Artificial mosaic brain evolution of relative telencephalon size improves inhibitory control abilities in the guppy (*Poecilia reticulata*). *Evolution*, 76(1), 128-138.
107. Triki, Z., Granell-Ruiz, M., Fong, S., Amcoff, M., and Kolm, N. (2022). Brain morphology correlates of learning and cognitive flexibility in a fish species (*Poecilia reticulata*). *Proceedings of the Royal Society B*, 289(1978), 20220844.
108. Triki, Z., Fong, S., Amcoff, M., Vàsquez-Nilsson, S., Kolm, N. (2023). Experimental expansion of relative telencephalon size improves the main executive function abilities in guppy. *PNAS Nexus* 2, 129.
109. Triki, Z., Levorato, E., McNeely, W., Marshall, J., and Bshary, R. (2019). Population densities predict forebrain size variation in the cleaner fish *Labroides dimidiatus*. *Proceedings of the Royal Society B*, 286(1915), 20192108.

110. Triki, Z., Wismer, S., Levorato, E., and Bshary, R. (2018). A decrease in the abundance and strategic sophistication of cleaner fish after environmental perturbations. *Global Change Biology*, *24*, 481-489.
111. Triki, Z., Wismer, S., Rey, O., Binning, S. A., Levorato, E., and Bshary, R. (2019). Biological market effects predict cleaner fish strategic sophistication. *Behavioral Ecology*, *30*(6), 1548–1557.
112. Truskanov, N., Emery, Y., and Bshary, R. (2020). Juvenile cleaner fish can socially learn the consequences of cheating. *Nature Communications* *11*, 1-9.
113. Truskanov, N., Emery, Y., Porta, S., and Bshary, R. (2021). Configural learning by cleaner fish in a complex biological market task. *Animal Behaviour*, *181*, 51–60.
114. Tsuboi, M., van der Bijl, W., Kopperud, B. T., Erritzøe, J., Voje, K. L., Kotrschal, A., ... and Kolm, N. (2018). Breakdown of brain–body allometry and the encephalization of birds and mammals. *Nature Ecology and Evolution*, *2*(9), 1492-1500.
115. Vail, A. L., Manica, A., and Bshary, R. (2013). Referential gestures in fish collaborative hunting. *Nature communications*, *4*(1), 1765.
116. Van Schaik, C. P., Triki, Z., Bshary, R., and Heldstab, S. A. (2021). A farewell to the encephalization quotient: a new brain size measure for comparative primate cognition. *Brain, Behavior and Evolution*, *96*(1), 1-12.
117. Welker, T. L., Lim, C., Yildirim-Aksoy, M., and Klesius, P. H. (2007). Effect of buffered and unbuffered tricaine methanesulfonate (MS-222) at different concentrations on the stress responses of channel catfish, *Ictalurus punctatus* Rafinesque. *Journal of Applied Aquaculture*, *19*(3), 1-18.
118. Westneat, M. W., and Alfaro, M. E. (2005). Phylogenetic relationships and evolutionary history of the reef fish family Labridae. *Molecular phylogenetics and evolution*, *36*(2), 370-390.
119. Wismer, S., Grutter, A., and Bshary, R. (2016). Generalized rule application in bluestreak cleaner wrasse (*Labroides dimidiatus*): using predator species as social tools to reduce punishment. *Animal Cognition*, *19*, 769-778.
120. Wismer, S., Pinto, A. I., Triki, Z., Grutter, A. S., Roche, D. G., and Bshary, R. (2019). Cue-based decision rules of cleaner fish in a biological market task. *Animal behaviour*, *158*, 249-260.
121. Wismer, S., Pinto, A. I., Vail, A. L., Grutter, A. S., and Bshary, R. (2014). Variation in cleaner wrasse cooperation and cognition: influence of the developmental environment?. *Ethology*, *120*(6), 519-531.
122. Wullimann, M. F., Rupp, B., Reichert, H. (1996). Neuroanatomy of the zebrafish brain: a topological atlas. Baser: Birkhauser Verlag.
123. Wullimann, M. F., and Meyer, D. L. (1993). Possible multiple evolution of indirect telencephalo-cerebellar pathways in teleosts: studies in *Carassius auratus* and *Pantodon buchholzi*. *Cell and tissue research*, *274*, 447-455.
124. Wullimann, M. F., and Mueller, T. (2004). Teleostean and mammalian forebrains contrasted: evidence from genes to behavior. *The Journal of comparative neurology*, *475*(2), 143-162.
125. Wullimann, M. F., and Vernier, P. (2009). Evolution of the Telencephalon in Anamniotes. In: Binder, M.D., Hirokawa, N., Windhorst, U. (eds) Encyclopedia of Neuroscience. Springer, Berlin, Heidelberg.
126. Yamamoto, N., Ishikawa, Y., Yoshimoto, M., Xue, H. G., Bahaxar, N., Sawai, N., ... and Ito, H. (2007). A new interpretation on the homology of the teleostean telencephalon based on hodology and a new eversion model. *Brain Behavior and Evolution*, *69*(2), 96-104.

127. Yamane, Y., Yoshimoto, M., and Ito, H. (1996). Area dorsalis pars lateralis of the telencephalon in a teleost (*Sebastiscus marmoratus*) can be divided into dorsal and ventral regions. *Brain, Behavior and Evolution*, 48(6), 338-349.
128. Yoshimoto, M., Albert, J. S., Sawai, N. (1998). Telencephalic ascending gustatory system in a cichlid Fish, *Oreochromis (Tilapia) niloticus*. *The Journal of Comparative Neurology* 392(2):209-26.
129. Young, R. L., Weitekamp, C., Triki, Z., Su, Y., Bshary, R., and Hofmann, H. (2022). Shared neural transcriptomic patterns underlie the repeated evolution of mutualistic cleaning behavior in Labridae wrasses. *EcoEvoRxiv Preprint* <https://doi.org/10.32942/osf.io/4p638>
130. Maguire, E. A., Woollett, K., Spiers, H. J. (2006). London taxi drivers and bus drivers: a structural MRI and neuropsychological analysis. *Hippocampus*, 16(12):1091-101. doi: 10.1002/hipo.20233. PMID: 17024677.