

1 **Biodiversity promotes resistance but dominant species shape recovery of grasslands**
2 **under extreme drought**

3

4 Manuele Bazzichetto^{1,2,†}, Marta Gaia Sperandii^{3,2}, Caterina Penone⁴, Petr Keil¹, Eric Allan⁴, Jan Lepš^{5,6}, Daniel Prati⁴,
5 Markus Fischer⁴, Ralph Bolliger⁴, Martin M. Gossner^{7,8*} & Francesco de Bello^{2,6*}

6

7 ¹ Faculty of Environmental Sciences, Department of Spatial Sciences, Czech University of Life Sciences Prague, Kamýcka 129,
8 16500, Praha-Suchbát, Czech Republic;

9 ² Centro de Investigaciones sobre Desertificación (CSIC-UV-GV), Valencia, Spain;

10 ³ Department of Botany and Zoology, Faculty of Science, Masaryk University, Brno, Czech Republic;

11 ⁴ Institute of Plant Sciences, University of Bern, CH-3013 Bern, Switzerland;

12 ⁵ Biology Centre, Institute of Entomology, Czech Academy of Sciences, Branišovská 1160/31, CZ-370 05, České Budějovice, Czech
13 Republic;

14 ⁶ Department of Botany, Faculty of Science, University of South Bohemia, Na Zlaté stoce 1, CZ-370 05, České Budějovice, Czech
15 Republic;

16 ⁷ Institute of Terrestrial Ecosystems, ETH Zurich, 8092 Zurich, Switzerland;

17 ⁸ Forest Health & Biotic Interactions, Swiss Federal Institute for Forest, Snow and Landscape Research WSL, 8903 Birmensdorf,
18 Switzerland.

19

20 † corresponding author: manuele.bazzichetto@gmail.com (ORCID: 0000-0002-9874-5064)

21 * Gossner and de Bello should be considered joint senior authors

22

23

24 **Abstract**

25

26 1. How biodiversity underpins ecosystem resistance (i.e., ability to withstand environmental perturbations) and recovery
27 (i.e., ability to return to a pre-perturbation state) and thus stability under extreme climatic events is a timely question in
28 ecology. To date, most studies have focused on the role of taxonomic diversity, neglecting how community functional
29 composition and diversity beget stability under exceptional climatic conditions. In addition, land use potentially
30 modulates how biodiversity and ecosystem functions respond to extreme climatic conditions.

31 2. Using an 11-year time-series of plant biomass from 150 permanent grassland plots spanning a gradient of land-use
32 intensity, we examined how taxonomic and functional components of biodiversity affected resistance and recovery of
33 biomass under extreme drought.

34 3. The association between biodiversity, land use, and biomass varied across years, especially in the driest years. Species
35 rich or functionally diverse communities (associated with low land-use intensity) buffered extreme droughts better,
36 while species poor communities or those dominated by fast-growing species (associated with high land-use intensity)
37 had higher recovery capabilities after a moderate-to-extreme drought.

38 *Synthesis.* Our results show that plant community functional and taxonomic components determine grasslands
39 resistance and recovery under moderate-to-extreme drought. In turn, this points to the importance of designing
40 landscapes with both extensively and intensively managed grasslands. Functionally or taxonomically rich communities
41 (favoured under low land-use intensity) would preserve biomass under extreme droughts, whereas species-poor or fast-
42 growing communities (favoured by high land-use intensity) would restore biomass after extreme droughts.

43 **Running title:** grassland stability under extreme drought

44 **Keywords:** resistance, recovery, plant biomass, standardised precipitation-evapotranspiration index, land-use
45 intensity, extreme climatic events, ecosystem function and services.

46 1. Introduction

47

48 A growing effort has been devoted to understanding how ecosystems respond to *extreme climatic events* (hereafter ECE)
49 such as heat waves and/or droughts (De Boeck et al. 2018). The frequency, magnitude, and impact of ECE will increase
50 in the near future (EEA 2017), so determining the capacity of ecosystems to respond to these phenomena is a pressing
51 task (Smith 2011; De Boeck et al. 2018). Extreme climatic events can strongly impact the stability of ecosystem functions
52 or nature contributions to people (Diaz et al. 2018; Xu et al. 2019; Bastos et al. 2020; Xu et al. 2020; Domeisen et al.
53 2022). Ideally, to withstand ECE, ecosystems should be able to (i) maintain their properties under strong environmental
54 perturbations (i.e., show high resistance), and to (ii) quickly recover their functioning after environmental perturbations
55 (i.e., show high recovery) (Isbell et al. 2015; de la Riva et al. 2017; Neilson et al. 2020). Ecosystems with low resistance
56 and recovery are expected to be more vulnerable to the effect of ECE (Oliver et al. 2015). Which biological features make
57 ecosystems resist to and recover from ECE is, however, still a subject of research (Mahecha et al. 2022).

58

59 Under average climate, biodiversity should stabilise ecosystem functions over time, although the paradigm
60 ‘biodiversity begets stability’ has long been debated (Lepš et al. 1982; McCann 2000; Diaz & Cabido 2001; Tilman et al.
61 2006; Li et al. 2022). In principle, biodiversity can support stability via several mechanisms related to species richness,
62 abundance, and temporal fluctuation of population sizes. More diverse communities can be more stable because they
63 can harbour species with different responses to environmental fluctuations, which insures ecosystems against loss of
64 functions (i.e., ‘insurance effect’; Ives et al. 2000; McCann 2000; Diaz & Cabido 2001). However, in line with the ‘mass
65 ratio hypothesis’ (Grime 1998), species’ contribution to stability is proportional to their relative abundance, so that few
66 but abundant species can determine stability (i.e., ‘dominant species effect’; Lisner et al. 2022). Apart from community
67 composition, asynchronous fluctuations of individual species’ population sizes can also stabilise ecosystem functions
68 (Allan et al. 2011; Lepš et al. 2019). Empirical and experimental studies found that taxonomic diversity has a positive
69 (Tilman et al. 1994, Isbell et al. 2015), negative (Pfisterer et al. 2002; Fischer et al. 2016), or no effect (Caldeira et al.
70 2005; Dormann et al. 2017; Kreyling et al. 2017; De Boeck et al. 2018) on resistance, recovery, or both under ECE.
71 Somewhat surprisingly, the role of community functional composition and diversity has been poorly investigated in the
72 context of ECE (De Boeck et al. 2018; Stampfli et al. 2018; but see Gazol et al. 2016; Fischer et al. 2016; de la Riva et al.
73 2017). Yet, accounting for it may explain how biodiversity begets stability under ECE, as functional traits, namely any
74 biological feature measurable at the individual level (Violle et al. 2007), can reveal a mechanistic link between ecosystem
75 functioning and environmental variability (Diaz & Cabido 2001; Suding et al. 2008; Polley et al. 2013; Cadotte 2017).

76

77 Recently, de Bello et al. (2021) reviewed different biodiversity-related mechanisms possibly involved in
78 ecosystem resistance and recovery from ECE, and concluded that they generally operate *via* functional traits (see also
79 Naeem et al. 2012). On one hand, dominant species can exert the largest effect on the resistance and recovery of
80 ecosystem functions through their traits (de Bello et al. 2021). For this reason, the dominant trait composition of plant
81 communities, as measured by community weighted means, has been used to locate communities along leaf-economic
82 continuum (‘slow’ *vs.* ‘fast’ communities; Craven et al. 2018). This has shown that communities dominated by traits
83 associated with conservative strategies (‘slow communities’) are better at withstanding perturbations (Lepš et al. 1982;
84 Isbell et al. 2015; de Bello et al. 2021) than fast communities, which, instead, seem to more quickly restore their
85 functioning after perturbations (Ghazoul et al. 2015; Craven et al. 2018; Karlowsky et al. 2018). On the other hand, the
86 ‘insurance effect’ hypothesis predicts that high diversity of response traits, which relate to plant response to
87 environmental variability (Lavorel & Garnier 2002), promotes stability of ecosystem functioning under strong
88 environmental perturbations (Craven et al. 2018; Griffin-Nolan et al. 2019). Under this scenario, the loss of species
89 lacking the appropriate functional traits to resist a specific environmental perturbation (e.g., drought) should be
90 compensated by less sensitive species. However, the impact of species loss on the stability of ecosystem functioning
91 would only be minimised if species lost during an environmental perturbation and those that persist share the same effect

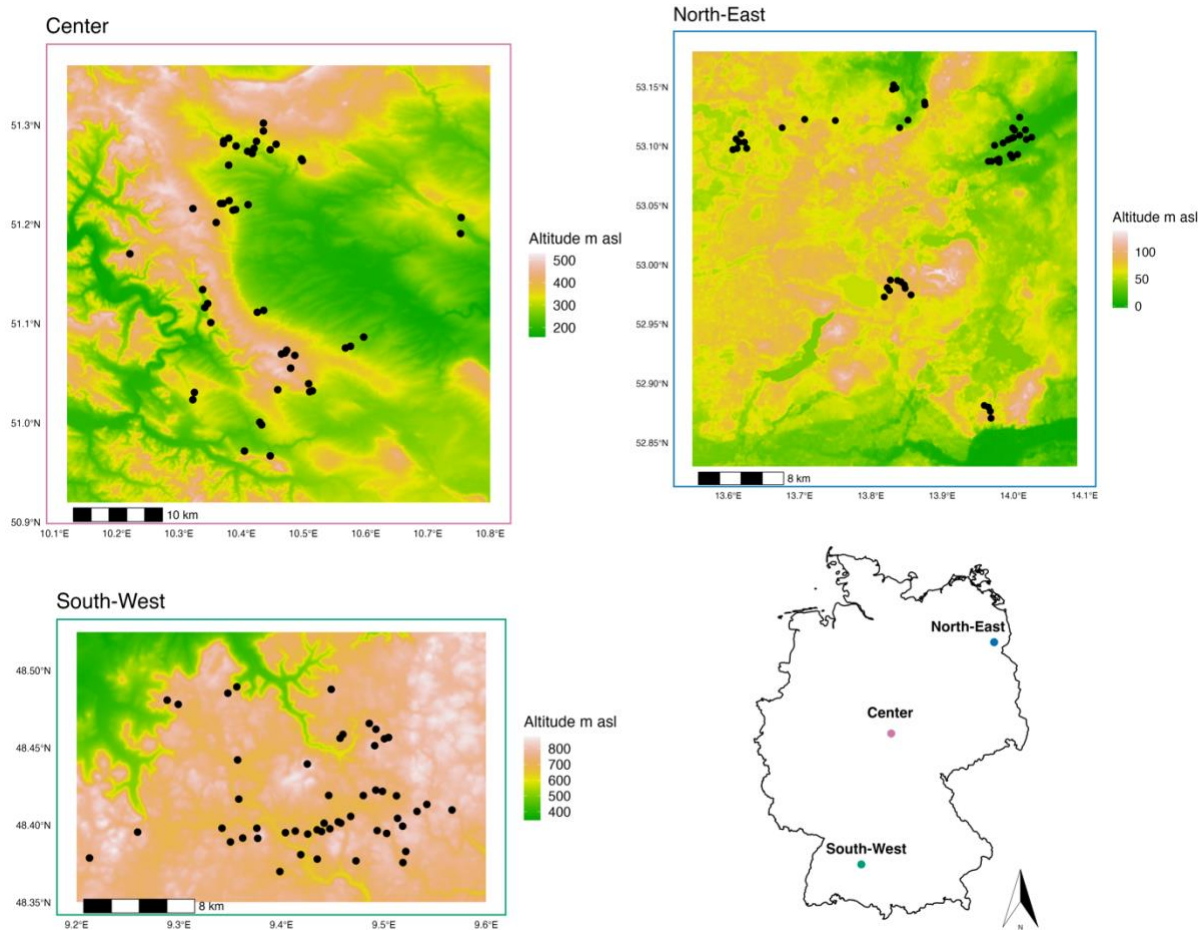
92 traits, i.e. traits producing an impact on ecosystem processes (Diaz & Cabido 2001; de Bello et al. 2021). Nevertheless,
93 both measures of trait composition and diversity can be important predictors of ecosystem resistance and recovery under
94 ECE (Griffin-Nolan et al. 2019).

95
96 Here we analysed how multiple biodiversity components (functional composition, functional diversity and
97 taxonomic diversity) support the resistance and recovery of plant biomass of managed grasslands undergoing extreme
98 drought. Specifically, by measuring year-to-year changes in plant aboveground biomass, we derived yearly estimates of
99 resistance and recovery, which we related to the functional and taxonomic characteristics of plant communities. We
100 tested this in a gradient of land-use intensity representing realistic management conditions of central European
101 grasslands. Our aims were to: (i) assess how functional composition, functional diversity, and taxonomic diversity
102 mediate plant biomass fluctuation along a gradient of land-use intensity; (ii) test whether the association between
103 biodiversity, biomass and land use changes under exceptional climatic conditions (i.e., moderate-to-extreme drought,
104 hereafter also collectively referred to as severe drought); and (iii) investigate whether and how biodiversity-related
105 mechanisms mediated by functional traits, such as dominant species and insurance effects, support ecosystem resistance
106 and recovery during and after severe drought. To this end, we analysed an 11-year grassland time-series of field-collected
107 plant biomass, biodiversity and land-use data from Germany.

108 **2. Materials and methods**

109 **2.1. Data from the Biodiversity Exploratories**

110
111 We gathered data on vegetation characteristics and land-use intensity from the German Biodiversity Exploratories, a
112 long-term project aiming at exploring and monitoring the relationships among land use, biodiversity, and ecosystem
113 functioning (Fischer et al. 2010). The Biodiversity Exploratories (hereafter BE) consist of a network of permanent plots
114 in three regions, which cover a wide latitudinal extent: Schorfheide-Chorin (hereafter North-East; North-East Germany:
115 52°470 to 53°130N; 13°230 to 14°090E); Hainich-Dün (hereafter Central; Central Germany: 50°940 to 51°380N;
116 10°170 to 10°780E); and Schwäbische Alb (hereafter South-West; South-West Germany: 48°340 to 48°530N; 9°180 to
117 9°600E) (Figure 1; also see Fisher et al. 2010 for a thorough description of the three regions). The BE regions span a wide
118 range of altitude (South-West: 460-860 m; Central: 285-550 m; North: 3-140 m), as well as a considerable range of
119 precipitation (South-West: 700-1000 mm; Middle: 500-800 mm; North-East: 500-600 mm) and temperature (South-
120 West: 6-7 °C; Central: 6.5-8 °C; North-East: 8-8.5 °C). In each region, 50 permanent grassland plots of 50 m x 50 m size
121 were randomly placed within larger management units and have been surveyed yearly since 2008 to measure
122 aboveground plant biomass (from 2009), and collect data on several biotic (e.g., plant composition based on estimated
123 cover), abiotic (e.g., soil moisture) and anthropogenic (e.g., land-use intensity) variables.



126
127 Figure 1 - Study area. Panels show the location of grassland plots in each region of the Biodiversity Exploratories overlaid to an altitude
128 layer (m asl: metres above the sea level).
129

130 **2.1.1. Measures of biomass fluctuation**

131 Plant aboveground biomass was harvested yearly during spring over the period 2009-2019 (11 years; Hinderling et al.
132 2023). The harvest period varied across BE regions, but mainly occurred in mid/late May. The median, first and third
133 quartile of the day of harvest, as averaged over the study period, were: 142nd, 138th-147th in South-West; 137th, 134th-141st
134 in Central; 141st, 137th-145th in North-East. Biomass was collected in each vegetation plot within 8 sub-quadrats of 0.5
135 m x 0.5 m from 2009 to 2018 and within 2 sub-quadrats of 1 m x 1 m in 2019. All plants in the sub-quadrats were
136 harvested at 4 cm height, and the resulting organic matter was oven dried for 48 hours at 80 °C until constant weight
137 and weighed. We then computed the average of the biomass measured in the sub-quadrats to obtain a single value for
138 each vegetation plot, namely the average biomass per square metre. The area on which plant biomass was harvested was
139 temporarily fenced in spring to exclude livestock. We recorded the date on which plant biomass was harvested in each
140 vegetation plot (hereafter *day of the year*), and used it in the analyses (as a continuous variable) to account for the effect
141 of the harvesting period when testing the association between biodiversity, resistance and recovery of biomass.

142 We quantified temporal changes in plant biomass using two log response ratios (Lloret et al 2011; Nimmo et
143 al. 2015; Gazol et al. 2016; Stuart-Haëntjens et al. 2018; Mathes et al. 2021).

144 The first was:

145
146
147

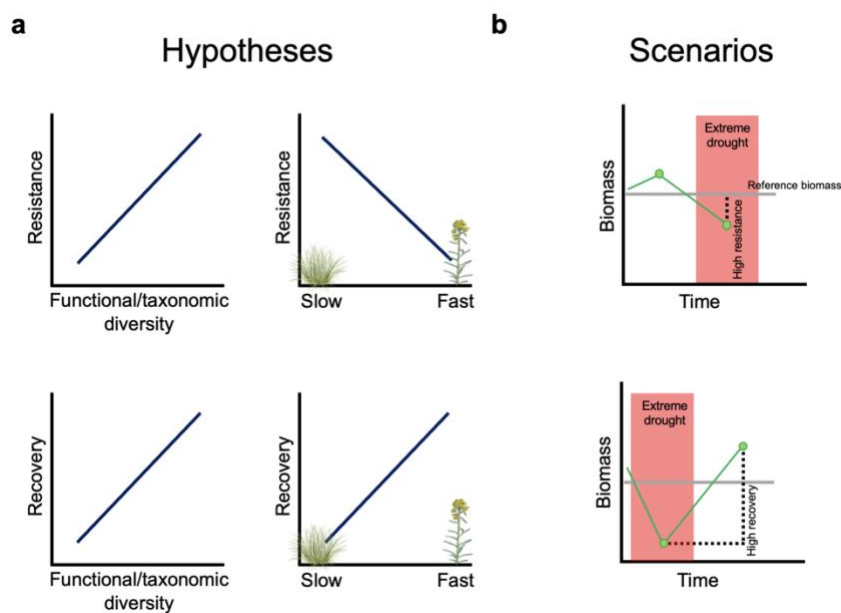
$$\text{LogR} = \ln\left(\frac{\text{biomass}_{\text{plot } i, \text{year } t}}{\text{biomass}_{\text{plot } i, \text{year } t-1}}\right),$$

148 where \ln is the natural logarithm. The LogR quantified the year-by-year change in plant biomass collected in a plot. In
 149 other words, this measure considers as a reference the biomass of the previous year to assess biomass response to
 150 environmental fluctuations. When focusing on years immediately after a moderate or extreme drought event, we used
 151 the LogR (hereafter also referred to as **annual log ratio**) to quantify grassland recovery (Schäfer et al. 2019).
 152 A second measure of plant biomass change was:

153
 154
$$\text{LogR}_{\text{ref-plot}} = \ln\left(\frac{\text{biomass}_{\text{plot } i, \text{year } t}}{\text{median biomass}_{\text{plot } i}}\right),$$

155
 156 where $\text{median biomass}_{\text{plot } i}$ is the median value of the biomass collected in $\text{plot } i$, over the time-series. This measure was used
 157 to quantify the year specific biomass budget of $\text{plot } i$ with respect to the plot reference value (i.e., $\text{median biomass}_{\text{plot } i}$).
 158 When focusing on years featuring severe drought, we used the $\text{LogR}_{\text{ref-plot}}$ (hereafter also referred to as **plot reference**
 159 **log ratio**) to measure grassland resistance.

160
 161 See Figure 2 for the hypothesised association between biomass recovery, resistance, biodiversity and slow- vs. fast-
 162 growing strategies, and for scenarios of recovery and resistance arising under extreme drought.
 163



164
 165
 166 Figure 2 - Hypotheses about the association between biomass recovery, resistance, biodiversity and slow- vs. fast-growing strategies
 167 (panel a), and scenarios of recovery and resistance under extreme drought (panel b). Plant icons (*Festuca* spp. on the 'slow side' and
 168 *Euphorbia esula* on the 'fast' side) by Tracey Saxby (Integration and Application Network, ian.umces.edu/media-library), CC BY-SA
 169 4.0 DEED. No changes were made to the original icons.

170
 171 **2.1.2. Plant community characteristics**

172 We calculated several characteristics of grassland communities:

173 **Taxonomic diversity** (species richness) is the number of plant species recorded yearly in each vegetation plot
 174 within a 4 m x 4 m sub-quadrat (Bolliger et al. 2021).

175 **Functional traits.** We used multiple above-ground traits to summarise the functional composition and
 176 diversity of grassland communities. These were: plant height (m); leaf dry matter content (mg/g); specific leaf area
 177 (m²/kg); seed mass (mg); leaf nitrogen and leaf phosphorus content (mg/g). Plant height is associated with
 178 competitiveness for light and the overall plant fecundity; specific leaf area (hereafter SLA), leaf dry matter content
 179 (hereafter LDMC), leaf nitrogen and leaf phosphorus content are related to resource acquisition, growth and

180 photosynthetic rate; seed mass is associated with plant persistence and dispersal capacity (Perez-Harguindeguy et al.
181 2013). Data on SLA and LDMC are from both the BE and TRY datasets, while data for all the other traits are from the
182 TRY database (Kattge et al. 2020). We preferred measured values from the BE (available for SLA and LDMC, and for a
183 total of 317 species; Breitschwerdt et al. 2018; Prati et al. 2021) and, when these were not available, we filled the gaps
184 with trait data from TRY, cleaned and aggregated at the species level (Neyret & Manning 2023).

185 **Functional composition.** As a measure of functional composition, for each plot, we computed the (year-
186 specific) community weighted mean of each of the above-ground plant traits, and performed a principal component
187 analysis (PCA) on their correlation matrix. We used the first axis of the PCA, which explained 48% of the variance, as a
188 proxy of the leaf-economic spectrum (hereafter *slow-fast continuum*) (see Figure A1, Appendix A1 for supplementary
189 information on the PCA). Positive values of the slow-fast continuum were associated with plant communities
190 dominated by species with acquisitive strategies (fast-growing species), whereas negative values represented plant
191 communities characterised by species with conservative strategies (slow-growing species). Note that, to compute
192 community weighted means, trait values were weighted by species cover, which we measured (on a percentage scale) in
193 the same 4 m x 4 m sub-quadrats where we also recorded species richness.

194 **Functional and phylogenetic diversity.** For each plot and year separately, and using the above-mentioned
195 traits, we computed a combined measure of functional and phylogenetic diversity following the approach proposed by
196 de Bello et al. (2017). In a nutshell, this approach uses a phylogeny as a proxy to integrate missing information on traits
197 values. Phylogenetic distance between species is added to measured functional trait diversity to account for unmeasured
198 (and conserved) traits. However, the functional and phylogenetic components are added without double-counting the
199 signal they inevitably share. Here, as we were mainly interested in the effect of functional traits, we added the non-
200 overlapping phylogenetic part to the functional dissimilarity. This way, we derived a matrix of combined functional and
201 phylogenetic dissimilarity, on which we computed the plot specific Rao's diversity index (Rao 1982). For simplicity, we
202 refer to this as functional diversity, where high values of functional diversity are associated with communities
203 characterised by high dissimilarity in species' plant traits. For all this, we used Daphne, a dated ultrametric supertree of
204 European plant species (Durka & Michalski 2012).

205

206 2.1.3. Land-use intensity and soil moisture

207 **Land use intensity.** The land-use intensity gradient covered by our study plots affects grassland biomass production
208 (Allan et al. 2015). To account for this, we used the plot-specific, yearly value of a *land-use intensity index* developed by
209 Blüthgen et al. (2012), which combines the individual contributions of grazing, fertilisation and mowing (Lorenzen et
210 al. 2022). We computed the land-use intensity index as the global mean of grassland management for the three BE regions
211 for the years 2009-2019 (see Blüthgen et al. 2012), which allows comparison of land-use intensity across regions. We
212 computed the index using the index calculation tool (Ostrowski et al. 2020) from the Biodiversity Exploratories
213 Information System (<http://doi.org/10.17616/R32P9Q>).

214 **Soil moisture.** Soil characteristics were considered in the selection of sites with different land uses (see Fischer
215 et al. 2010). However, environmental factors may have still partially influenced the relationship between land use and
216 biomass fluctuation. For example, plant communities in wet areas are generally less intensively managed than
217 communities on dry soils. To account for that, when analysing the relationship between land use, biomass fluctuation,
218 and grasslands resistance and recovery, we simultaneously controlled for the plot-specific soil moisture. As an overall
219 measure of soil moisture, we computed the average value of the soil moisture at 10 cm depth (in %) recorded over the
220 time-series by climatic loggers placed within each vegetation plot (Wöllauer et al. 2022).

221

222 2.2. Data on annual drought

223 To analyse the response of grasslands to different drought severities, we gathered data from the Global SPEI database
224 (SPEIbase, version 2.6; Vicente-Serrano et al. 2010). We downloaded the **Standardised Precipitation-
225 Evapotranspiration Index** (hereafter **SPEI**; data available until 2018), which is a multiscalar, site-specific drought

226 indicator of deviations from average water balance. In contrast to other drought indices (e.g., the Standardised
227 Precipitation Index), the SPEI not only accounts for precipitation, but also incorporates the influence of temperature
228 on drought severity (see Vicente-Serrano et al. 2010). The SPEI has been used in several studies assessing the effect of
229 drought on plant biomass and ecosystem stability (Isbell et al. 2015; Ivits et al. 2016; Slette et al. 2019; Matos et al. 2020;
230 Chen et al. 2022). Also, it is expressed in z-scores, which facilitates the classification of drought events of different
231 magnitude (see Isbell et al. 2015). For example, an annual value of SPEI equal to (or lower than) -1.28 indicates that the
232 associated annual drought event (or a more extreme one if lower than -1.28) is likely to occur once every 10 years.

233 We considered SPEI aggregating data on cumulative water balance over 3, 12 and 24 months (hereafter SPEI-
234 3/-12/-24) before the peak of biomass growth (i.e., May). This allowed analysing resistance and recovery from drought
235 measured at multiple time-scales, and, in turn, to assess biomass response to short- and long-term drought. The SPEI
236 values for all time-scales were obtained for each year of the time-series (see Figure A2, Appendix A2 for SPEI-3/-12/-24
237 temporal trend). Data on SPEI were gathered as raster layers of 0.5 degrees resolution from which we extracted, separately
238 for each region, the index value at the geographical centroid of the ensemble of vegetation plots in a region.

239 Following Isbell et al. (2015), continuous SPEI-3/-12/-24 were categorised to extreme drought (SPEI < -1.28);
240 moderate drought (-1.28 <= SPEI <= -0.67); normal water balance (-0.67 < SPEI < 0.67); moderate wetness (0.67 <=
241 SPEI <= 1.28); extreme wetness (SPEI > 1.28). Table A2 (Appendix A2) provides the numbers of dry (or wet) years in
242 each time series and BE region.

243

244 2.3. Analysis of grassland resistance and recovery

245

246 2.3.1. Time-series analysis of plant biomass change

247 Using generalised least squares models, we analysed how the LogR and LogR_{ref-plot} related to land-use intensity, slow-fast
248 continuum, functional diversity, day of the year (day of biomass harvest), soil moisture and plant species richness over
249 the time-series. Also, we included a categorical variable with three levels, each representing one of the three BE regions,
250 to account for mean region-specific differences. Species richness was correlated with slow-fast continuum (mean Pearson
251 correlation computed over the time-series: -0.43), functional diversity (0.51), and land-use intensity (-0.40). Therefore,
252 we analysed species richness separately, i.e. repeating analyses including species richness in the models and excluding
253 slow-fast continuum and functional diversity.

254 We assumed that time affected how the log response ratios related with land-use intensity, slow-fast
255 continuum, functional diversity, day of the year, soil moisture and plant species richness. We therefore included the
256 statistical interactions between the predictors and year, i.e. a categorical variable with each level representing a year of the
257 time-series. To account for the dependence among observations sampled from the same vegetation plots over time, we
258 considered the following temporal autocorrelation models: a first- and a second-order autoregressive process (AR-1, AR-
259 2), and an autoregressive-moving average process (ARMA) with a correlation parameter for the autoregressive model
260 and one for the moving average (see Pinheiro & Bates 2006). Among the different temporal autocorrelation structures,
261 we selected the most parsimonious one (i.e., including the lowest number of parameters), which allowed reducing
262 (normalised) residuals' temporal autocorrelation. We found that ARMA was the most adequate model for the LogR,
263 while an AR-1 best fitted the temporal autocorrelation of the LogR_{ref-plot} model.

264 Although the 'repeated measures' structure of our dataset would call for the use of a plot-level random effect
265 (in a mixed-effects model design) to further account for the non-independence of observations from the same plots, we
266 did not include it. The reason is that both log response ratios were computed by standardising biomass collected in a
267 plot and year by a plot-specific reference value (see 2.1.1.). This substantially absorbs the 'between plots' variability in the
268 log ratios, making the plot-level random effect ineffective (i.e., explaining zero 'between plots' variance).

269 We fitted generalised least squares models using the *nlme* R package (Pinheiro et al. 2021). All numeric (non-
270 categorical) predictors were centred before fitting the models. Models' predictions on the association between the log
271 response ratios *vs.* slow-fast continuum, functional diversity, species richness and land-use intensity were compared with

272 the observed relationship between these predictors and biomass. This allowed determining whether the former
273 predictors related differently to overall biomass and biomass change (here measured by the two log response ratios).
274 Models' predictions were computed using the *effects* R package (Fox & Weisberg 2018, 2019).

275

276 **2.3.2. Effect of functional composition, functional and taxonomic diversity on resistance and recovery**

277 To test for the effect of community functional composition and diversity, and taxonomic diversity on resistance and
278 recovery under drought, we fitted linear models including the statistical interaction between the functional and
279 taxonomic components and the categorical SPEI. To analyse recovery (models for the annual log ratio, LogR), we used
280 observations from the year immediately after one or more consecutive events of either moderate or extreme drought.
281 This way we assessed whether and how functional composition, and functional and taxonomic diversity of plant
282 communities support recovery of plant biomass after severe droughts, and we tested this under different conditions of
283 water availability (from normal water budget to extreme wetness). For the resistance analysis (models for the plot
284 reference log ratio, $\text{LogR}_{\text{ref-plot}}$), we focused on observations from years of moderate or extreme drought, which allowed
285 us to examine the role of functional composition, functional and taxonomic diversity in buffering grasslands under water
286 shortage.

287 We fitted separate models for the different SPEI time-scales, i.e. SPEI-3/-12/-24. As done in 2.3.1. analyses
288 were carried out separately for functional composition and diversity, and for species richness. Land-use intensity, day of
289 the year, soil moisture and region were included as predictors in the model but were excluded from the interaction with
290 the categorical SPEI. By including region as a predictor in the models, we allowed for mean region-specific differences
291 to be accounted for. At the same time, we assumed that the interaction between biodiversity components and drought
292 intensity, as well as the association between recovery, resistance and the other predictors, was the same within each
293 region. This way we focused on the overall trend of the relationship between recovery, resistance, biodiversity and
294 drought. Note that according to the categorical SPEI-24, events of moderate or extreme drought were followed only by
295 years of normal water budget conditions. Therefore, recovery was analysed under a lower number of water availability
296 conditions than for SPEI-3 and -12. All numeric (non-categorical) predictors were centred before fitting the models.
297 Model assumptions of normality, linearity and homoscedasticity were assessed using the *performance* R package
298 (Lüdecke & Mattan 2021). Models' predictions were computed using the *effects* R package (Fox & Weisberg 2018,
299 2019).

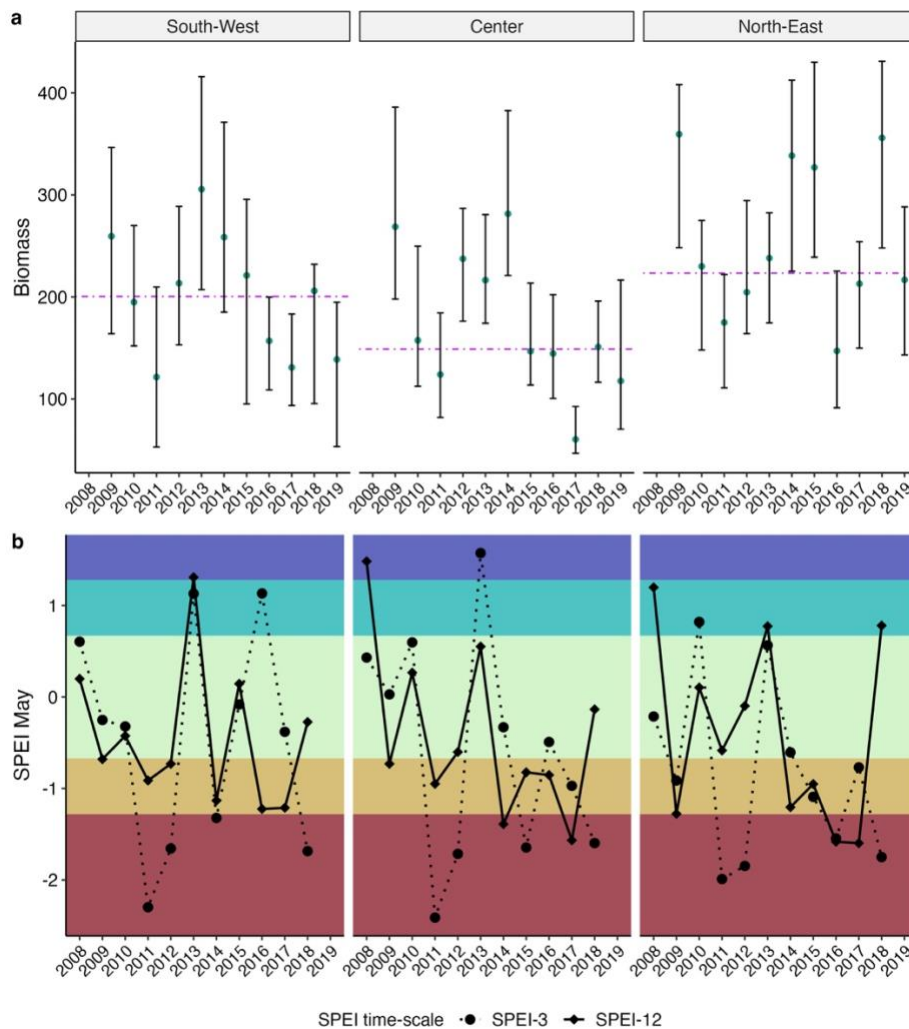
300

301 **3. Results**

302

303 The three regions showed similar temporal trends in plant biomass production, which, overall, was higher in South-West
304 and North-East than in Central Germany over the time-series (Figure 3a). In Central and North-East Germany plant
305 biomass production was highest in 2009 and 2014, while in the South-West it was highest in 2013. According to all SPEI
306 time-scales, 2009, 2013 and 2014 either featured or were preceded by average or above average water budgets in all regions
307 (Figure 3b, Figure A2, Appendix A2). Biomass production was lower than the overall trend in all regions in 2011 and
308 2017 (Figure 3a), both years which featured severe droughts at different time-scales (Figure 3b, Figure A2, Appendix
309 A2).

310



311
 312 Figure 3 - Temporal trends in biomass (panel a) and Standardised Precipitation-Evapotranspiration Index (panel b) in the three
 313 regions of the Biodiversity Exploratories. Panel a) Green points represent median biomass collected in each year in each region (South-
 314 West, Center and North-East). Bars delimit the interquartile range of biomass values and the purple dotted lines represent the regional
 315 median biomass across the time-series. Panel b) Temporal trend of 3- and 12-months SPEI. Temporal trend for SPEI-24 is reported
 316 in Appendix A2 (Figure A2). Colours of horizontal bands are associated with water budget conditions, with ochre and reddish colours
 317 representing moderate and extreme drought, respectively (following the classification of continuous SPEI values into categories of
 318 water availability conditions reported in 2.2.).

319
 320 **3.1. Association between biomass, biomass change, biodiversity and land use over time**

321 Biomass showed an overall positive association with slow-fast continuum and a negative relationship with functional
 322 diversity and species richness (Figure A3.1, Appendix A3), indicating that functionally and species poor communities
 323 dominated by fast-growing species were more productive. These communities appeared to be associated with high land-
 324 use intensity (Figure A3.2, Appendix A3). As a result, biomass was also positively associated with land-use intensity
 325 (Figure A3.1, Appendix A3), meaning that intensively managed plant communities produced more biomass than
 326 extensively managed.

327 The sign of the relationships between LogR as well as $\text{LogR}_{\text{ref-plot}}$ and the predictors varied across the years. In
 328 particular, in the years 2009, 2010, 2012 and 2016 (Figures A4.1,3, Appendix A4), the two log response ratios exhibited
 329 an opposite relationship with the slow-fast continuum, functional diversity and species richness to the overall
 330 relationship observed for biomass (Figure A3.1, Appendix A3). This means that the three biodiversity components
 331 affected biomass change in these years differently than overall biomass growth.

332 Results for the annual (LogR) and plot reference log ratio (LogR_{ref-plot}) suggest that grasslands with different
333 functional composition, functional diversity and species richness responded differently to drought. Concerning the
334 LogR, both species rich and functionally diverse communities produced more biomass in 2012, which featured (and
335 was preceded by) extremely dry conditions in all three regions according to the SPEI-3, while having an overall normal
336 water budget according to SPEI-12 (Figure 3b). In 2017, which featured severe droughts in all regions according to all
337 SPEI time-scales, land-use intensity negatively affected the LogR (although significantly only in the model including
338 species richness), indicating that communities subject to low land-use intensity produced more (or lost less) biomass in
339 that year than in the previous year. Overall, vegetation plots harvested later in the sampling season were predicted to have
340 higher LogR values (Figure A4.2, Appendix A4), while soil moisture seemed not to consistently affect the LogR.

341 In 2009, 2010, 2012 and 2016, the LogR_{ref-plot} correlated positively with species richness, indicating that species
342 rich communities produced more (or lost less) biomass (with respect to the plot reference median biomass) than species
343 poor communities (Figure A4.3, Appendix A4). According to SPEI-12, all regions experienced moderate drought in
344 2009, while they all undergone extreme drought in 2012 (according to SPEI-3) and moderate-to-extreme drought in
345 2016 (according to SPEI-12) (Figure 3b). Land-use intensity significantly (and positively) affected the LogR_{ref-plot} only
346 in 2013, and exclusively in the model including species richness. As observed for the LogR, vegetation plots harvested
347 later in the sampling season were predicted to have higher LogR_{ref-plot} values (Figure A4.4, Appendix A4). Finally, soil
348 moisture positively affected the LogR_{ref-plot} from 2009 to 2013, meaning that vegetation plots located in wetter areas
349 produced more (or lost less) biomass (with respect to the plot reference median biomass) in these years.

350
351

352 **3.2. Effect of the interaction between functional composition, functional and taxonomic diversity and SPEI** 353 **on resistance and recovery**

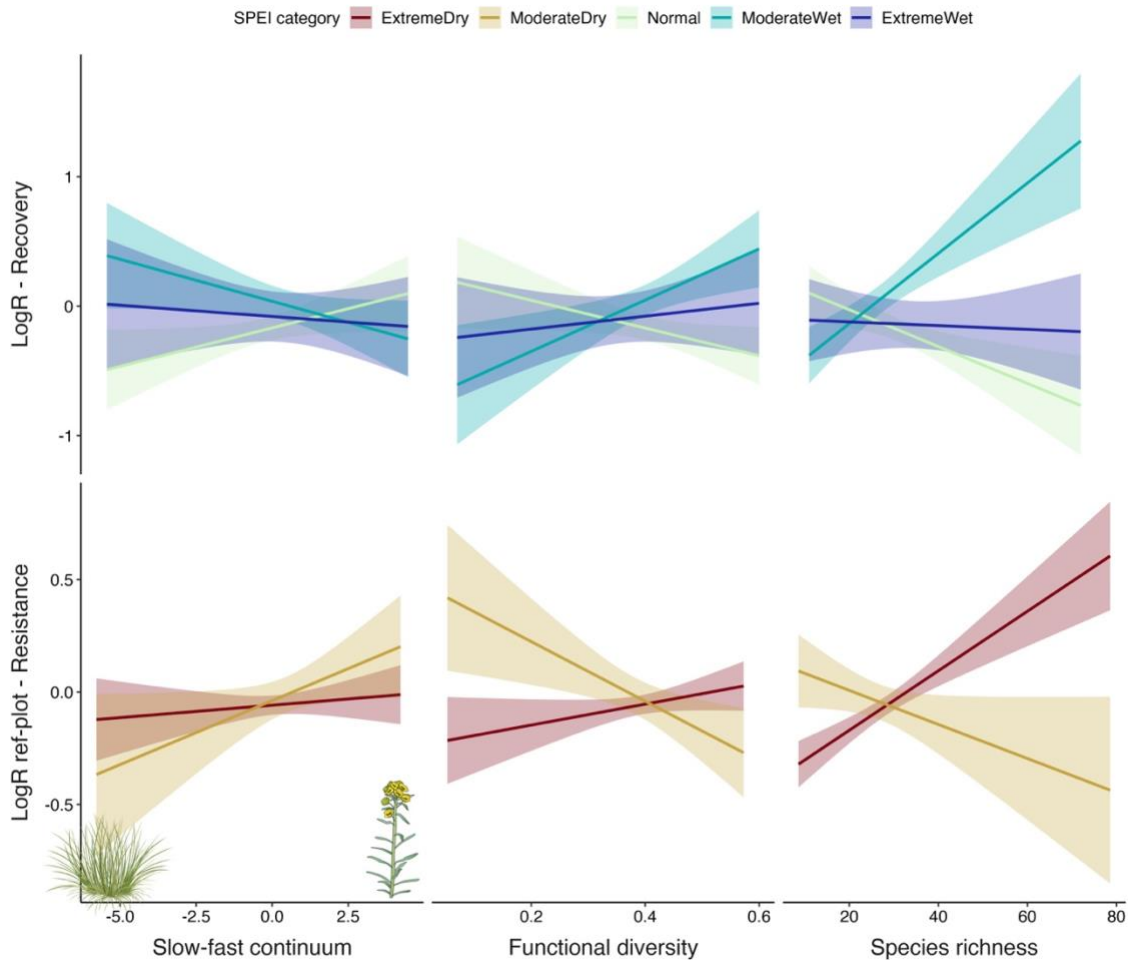
354 At SPEI-3, the effect of slow-fast continuum and functional diversity on plant community recovery depended on water
355 availability after drought (i.e., SPEI categories: normal, moderate and extreme wet) (slow-fast continuum: $F = 4.89$, p -
356 value < 0.05 ; functional diversity: $F = 7.27$, p -value < 0.05), while there was no evidence of such an interaction at SPEI-
357 12 (full summary of Type II analysis of variance reported in Table A5.3, Figures A5.1,2, Appendix A5). In particular,
358 functionally poor and fast-growing plant communities showed a more pronounced plant biomass growth (i.e., higher
359 recovery) when drought was followed by normal water conditions, whereas more functionally diverse and slow-growing
360 communities seemed favoured when drought was followed by moderate wetness (Figures 4, A5.2, Appendix A5).

361 Concerning taxonomic diversity, at SPEI-3 species poor communities produced more biomass when drought
362 was followed by normal water budgets, while species rich communities exhibited higher recovery capabilities when
363 drought was followed by moderate wetness ($F = 23.05$, p -value < 0.05) (Figures 4, A5.2, Appendix A5). On the contrary,
364 at SPEI-12 species poor communities were predicted to produce more biomass when drought was followed by moderate
365 wetness, although the interaction between species richness and water availability after drought was only marginally
366 significant ($F = 2.98$, p -value = 0.05) (Figures A5.1,2; full summary of Type II analysis of variance reported in Table
367 A5.4, Appendix A5). We found no evidence of an association between functional composition, functional diversity,
368 species richness and recovery at SPEI-24, according to which severe drought was followed only by normal water budget
369 (Figure A5.1,2, Tables A5.3, A5.4, Appendix A5).

370

371 At SPEI-3, resistance, as measured by the LogR_{ref-plot}, appeared to be affected by the interaction between drought
372 intensity and functional diversity ($F = 10.86$, p -value < 0.05), but not by the interaction between drought intensity and
373 slow-fast continuum ($F = 2.21$, p -value > 0.05) (full summary of Type II analyses of variance reported in Table A6.3,
374 Appendix A6). Specifically, functionally diverse communities had greater resistance (i.e., more pronounced biomass
375 growth or lower biomass loss) under extreme drought (Figures 4, A6.2, Appendix A6). We found no statistically
376 significant interaction between slow-fast continuum, functional diversity and drought intensity at SPEI-12 and -24
377 (Table A6.3, Figures A6.1,2, Appendix A6).

378 Species richness interacted with drought intensity in affecting resistance at SPEI-3 and -12 (Table A6.4,
 379 Appendix A6). At both time-scales, species rich communities had a more pronounced biomass growth (or lower biomass
 380 loss) than species poor communities under extreme drought (Figures 4, A6.1,2, Appendix A6). We found no statistical
 381 interaction between species richness and drought intensity at SPEI-24 (Table A6.4, Appendix A6).
 382



383
 384 Figure 4 - Effect of the interaction between slow-fast continuum, functional diversity, and species richness (columns) and the
 385 categorical 3-months Standardised Precipitation Evapotranspiration Index (SPEI-3: from extreme drought, in reddish, to extreme
 386 wet, in blue) on recovery (upper panel) and resistance (bottom panel). Bands represent 95% confidence intervals for conditional
 387 means. An example of a slow-growing species (*Festuca* spp.) is located at the leftmost end of the slow-fast continuum, while an example
 388 of a fast-growing species (*Euphorbia esula*) is located at the rightmost end of the spectrum. Plant icons by Tracey Saxby (Integration
 389 and Application Network, ian.umces.edu/media-library), CC BY-SA 4.0 DEED. No changes were made to the original icons.

390
 391 **4. Discussion**
 392

393 When focusing on short-term water budgets (i.e., SPEI-3), we found that functionally and taxonomically diverse
 394 communities buffered extreme droughts better, whereas species-poor, fast-growing communities had higher recovery
 395 capabilities when severe drought was followed by normal water conditions. This shows that mechanisms such as
 396 insurance (Diaz & Cabido 2001) and dominant species effect (Lisner et al. 2022) support resistance and recovery of
 397 grasslands experiencing unfavourable environmental conditions.
 398

399 **4.1. Community composition and land use vs. temporal fluctuation of biomass**

400 Our results suggest that land use is the main determinant of grassland biomass production, likely through direct
401 management (e.g., fertilisation) that influences community functional and taxonomic composition (Socher et al. 2012;
402 Blüthgen et al. 2016). In this regard, we observed that species poor plant communities with fast-growing species, low
403 functional diversity (Figure A3.1, Appendix A3), and subject to high land-use intensity (Figure A3.1,2, Appendix A3),
404 produced more biomass. On the contrary, species rich plant communities with abundant slow-growing species and high
405 functional and taxonomic diversity were less productive (Figure A3.1, Appendix A3). These findings are in line with
406 Allan et al. (2015) and Májeková et al. (2016), who previously described such a relationship in grasslands.

407 However, we found that the association between biodiversity and plant biomass fluctuation (i.e., LogR and
408 $\text{LogR}_{\text{ref-plot}}$) had opposite signs to those found for biomass in several years with severe drought (2009, 2012 and 2016; see
409 Figure 3b). This supports the idea that biodiversity mediates the response of grassland biomass to drought. Under average
410 climatic conditions, land use determines plant community composition, with intense land use shifting vegetation
411 towards fast-growing competitive species, and thus highly productive but functionally poor communities (Laliberté &
412 Tylianakis 2012; Májeková et al. 2016). However, in dry years functionally and species rich communities produce more
413 (or lose less) biomass than functionally and species poor communities, thus pointing to high biodiversity as a factor
414 promoting long-term stability of ecosystem functions (Isbell et al. 2017; Craven et al. 2018 and references therein).

415

416 **4.2. Community composition and diversity vs. resistance and recovery**

417 We observed a positive effect of functional diversity and species richness on the *resistance* of grassland biomass. In
418 particular, species rich communities with high functional diversity withstood extreme droughts better than species poor
419 communities with low functional diversity. The buffering effect of taxonomic diversity was already observed by Isbell
420 et al. (2015), who found that species richness positively correlated with the resistance of biomass to both dry and wet
421 extreme events in experimental settings, and our study extends this result to real-world communities. Concerning
422 functional diversity, previous empirical studies found its positive effect on overall ecosystem stability under drought
423 (Polley et al. 2013; Gazol et al. 2016; Hallett et al. 2017; Miller et al. 2019), but only few reported such a positive effect
424 on resistance specifically (Lepš et al. 1982; Symstad & Tilman 2001). Thus, we add evidence that biodiversity-related
425 mechanisms mediated by functional diversity may kick in under extreme drought to maintain grasslands biomass. Here
426 we see the insurance effect (Diaz & Cabido 2001) as the most likely trait-based mechanism explaining our results:
427 specifically, functionally diverse communities, characterised by species with varying responses to environmental
428 fluctuations, maintain more stable ecosystem properties under environmental perturbations (Ives et al. 2000; Diaz &
429 Cabido 2001, Mariotte et al. 2013; de Bello et al. 2021). In this regard, previous studies evidenced that communities with
430 high evenness of SLA values were the least sensitive to drought (Griffin-Nolan et al. 2019; Miller et al. 2019). Along with
431 root traits, leaf traits are indeed relevant for resistance to drought, as, for example, leaf dimension is related to water
432 consumption efficiency (Griffin-Nolan et al. 2019; Walde et al. 2021). In line with the insurance effect, functionally
433 diverse plant communities, and more specifically those with large variability of leaf traits, may include species that better
434 resist extreme drought (Walde et al. 2021). Also, communities with high functional diversity are usually constituted by
435 stress-tolerant species, which can resist harsh perturbations such as extreme climatic events (Lepš et al. 1982).

436 Concerning *recovery*, in line with previous studies (Lepš et al. 1982; Stampfli et al. 2018), we observed that
437 species poor communities dominated by fast-growing species recovered better, especially when severe drought was
438 followed by average water availability. We ascribe this to the dominant species effect, whereby few, yet abundant (in
439 terms of biomass) species exert the largest effect on ecosystem functions through their traits (de Bello et al. 2021). In our
440 study, fast-growing communities were dominated by species with resource-acquisitive strategies, which match the
441 typical ecological profile of competitive-ruderals with rapid growth of biomass (Lepš et al. 1982). Moreover, recovery of
442 these species was likely higher under high intensity of land use, corresponding to high content of nitrogen and other
443 nutrients. Indeed, even low inputs of nitrogen foster recovery of biomass after drought (Mackie et al. 2019). Also,
444 intensively managed grasslands of the Biodiversity Exploratories, and particularly those subject to high fertilisation, have
445 large proportions of grasses (Socher et al. 2013), which outperform other plant types (e.g., forb) in post-drought

446 compensatory growth (Hoover et al. 2014; Stampfli et al. 2018; Wilcox et al. 2020). Thus, the effect of (functional)
447 diversity should be always considered together with the effect of functional composition, particularly the effect of the
448 strategies of dominant species – in our case, represented by the slow-fast continuum.

449 In line with Oram et al. (2020), at SPEI-3 we found that species rich, slow-growing communities recovered
450 better than species poor, fast communities when drought was followed by moderate wetness. This can be ascribed to
451 conservative species being usually tolerant to stressful environmental conditions. On the contrary, we found that species
452 poor communities recovered better under moderate wetness at SPEI-12. Such a contrasting association between species
453 richness and recovery under wet conditions measured at different SPEI time-scales was also reported by Isbell et al.
454 (2015). However, our results for recovery under above-average wetness should be interpreted with caution due to the
455 low number of moderate and extreme events at all SPEI time-scales in our time-series (Table A2, Appendix A2).

456

457 **4.3. Generality over SPEI time-scales**

458 We found that functional components of biodiversity mediated the response of biomass to drought only at SPEI-3,
459 which in our study quantified water availability right before and at the peak of biomass growth. On the contrary, we
460 observed that species richness and resistance were positively associated at all SPEI time-scales (although they negatively
461 correlated under moderate short-term drought). Similarly, species richness affected recovery of biomass under both
462 short- (SPEI-3) and long-term (SPEI-12) drought, although the interaction between species richness and SPEI was only
463 marginally significant in the latter case. Our results thus suggest that biodiversity mechanisms mediated by functional
464 traits and taxonomic diversity may operate at different temporal scales: functional traits, which are more mechanistically
465 linked to plants ecophysiological response to water shortage (Fatichi et al. 2016), may be better at capturing vegetation
466 response to short-term drought (e.g., right before the biomass peak), whereas taxonomic diversity may also catch
467 vegetation response to long-term droughts. We acknowledge that our results do not prove that there is an interaction
468 between drought duration (i.e., press *vs.* pulse drought) and biodiversity facets, and this is worth a more targeted study
469 in the future.

470

471 **5. Conclusion**

472

473 Our results show the importance of considering different biodiversity facets (i.e., functional and taxonomic) when
474 analysing the stability of grasslands under extreme climatic events and varying land-use intensity. Using multiple
475 measures of biomass change (here, log response ratios) allows (i) predicting temporal changes in plant biomass, and (ii)
476 understanding how grasslands respond to both average and extraordinary environmental conditions. This will help
477 develop more effective grassland management strategies to address the new challenges posed by increasing extreme
478 drought events. Our results indicate that promoting landscapes with varying land-use intensity can increase the overall
479 stability of grassland biomass, with slow communities (subject to low land-use intensity) preserving biomass during
480 droughts due to high resistance, and fast communities (subject to high land-use intensity) restoring biomass after
481 droughts due to high recovery capabilities.

482

483 **Authors contribution**

484

485 MB, FdB, MG conceptualised the study. MB analysed the data with MGS. MB wrote the first version of the manuscript,
486 which was commented on, improved and approved by all authors.

487

488 **Data availability statement**

489

490 This work is based on data elaborated by several projects of the Biodiversity Exploratories program (DFG Priority
491 Program 1374). The datasets are publicly available in the Biodiversity Exploratories Information System

492 (<http://doi.org/10.17616/R32P9Q>), (Breitschwerdt et al. 2018; Bolliger et al. 2021; Prati et al. 2021; Lorenzen et
493 al. 2022; Wöllauer et al. 2022; Hinderling et al. 2023; Neyret & Manning 2023).

494

495 **Code availability statement**

496

497 Data and R code for reproducing the results presented in this manuscript can be found at:
498 <https://github.com/ManueleBazzichetto/ResistRecoverDrought> (or at: <https://doi.org/10.5281/zenodo.10518333>).

499

500 **Conflict of interest statement**

501

502 Authors have no conflict of interest to declare.

503

504 **Acknowledgements**

505

506 Funded by the European Union (Marie Skłodowska-Curie grant agreement No 101066324; ERC, BEAST, 101044740).
507 Views and opinions expressed are however those of the author(s) only and do not necessarily reflect those of the
508 European Union or European Research Executive Agency (REA). Neither the European Union nor the granting
509 authority can be held responsible for them. All authors acknowledge Dr. Lars Götzenberger (University of South
510 Bohemia, České Budějovice) for providing the phylogenetic tree of plants. All authors thank the managers of the three
511 Exploratories, Julia Bass, Anna K. Franke, Franca Marian and all former managers for their work in maintaining the plot
512 and project infrastructure; Victoria Griefsmeier for giving support through the central office, Andreas Ostrowski for
513 managing the central database, and Markus Fischer, Eduard Linsenmair, Dominik Hessenmöller, Daniel Prati, Ingo
514 Schöning, François Buscot, Ernst-Detlef Schulze, Wolfgang W. Weisser and the late Elisabeth Kalko for their role in
515 setting up the Biodiversity Exploratories project. We thank the administration of the Hainich national park, the
516 UNESCO Biosphere Reserve Swabian Alb and the UNESCO Biosphere Reserve Schorfheide-Chorin as well as all land
517 owners for the excellent collaboration. The work has been (partly) funded by the DFG Priority Program 1374
518 "Biodiversity-Exploratories" (DFG-Refno.). Field work permits were issued by the responsible state environmental
519 offices of Baden-Württemberg, Thüringen, and Brandenburg.

520

521 **References**

522

523 Allan, E., Manning, P., Alt, F., Binkenstein, J., Blaser, S., Blüthgen, N., ... & Fischer, M. (2015). Land use intensification
524 alters ecosystem multifunctionality via loss of biodiversity and changes to functional composition. *Ecology letters*, 18(8),
525 834-843.

526

527 Allan, E., Weisser, W., Weigelt, A., Roscher, C., Fischer, M., & Hillebrand, H. (2011). More diverse plant communities
528 have higher functioning over time due to turnover in complementary dominant species. *Proceedings of the National
529 Academy of Sciences*, 108(41), 17034-17039.

530

531 Bastos, A., Ciais, P., Friedlingstein, P., Sitch, S., Pongratz, J., Fan, L., ... & Zaehle, S. (2020). Direct and seasonal legacy
532 effects of the 2018 heat wave and drought on European ecosystem productivity. *Science advances*, 6(24), eaba2724.

533

534 Blüthgen, N., Simons, N. K., Jung, K., Prati, D., Renner, S. C., Boch, S., ... & Gossner, M. M. (2016). Land use imperils
535 plant and animal community stability through changes in asynchrony rather than diversity. *Nature Communications*,
536 7(1), 1-7.

537

538 Blüthgen, N., Dormann, C. F., Prati, D., Klaus, V. H., Kleinebecker, T., Hölzel, N., ... & Weisser, W. W. (2012). A
539 quantitative index of land-use intensity in grasslands: Integrating mowing, grazing and fertilization. *Basic and Applied*
540 *Ecology*, 13(3), 207-220.

541

542 Bolliger, R., Prati, D., Fischer, M. (2021). Vegetation Records for Grassland EPs, 2008 – 2020. Version 2. Biodiversity
543 Exploratories Information System. Dataset. <https://www.bexis.uni-jena.de//ddm/data/Showdata/27386?version=2>
544

545 Breitschwerdt, E., Bruelheide, H., Jandt, U. (2018). Leaf traits self measured (BERICH, 2011). Version 2. Biodiversity
546 Exploratories Information System. Dataset. <https://www.bexis.uni-jena.de//ddm/data/Showdata/17535?version=2>
547

548 Cadotte, M. W. (2017). Functional traits explain ecosystem function through opposing mechanisms. *Ecology Letters*,
549 20(8), 989-996.

550

551 Caldeira, M. C., Hector, A., Loreau, M., & Pereira, J. S. (2005). Species richness, temporal variability and resistance of
552 biomass production in a Mediterranean grassland. *Oikos*, 110(1), 115-123.

553

554 Chen, Q., Wang, S., Seabloom, E. W., MacDougall, A. S., Borer, E. T., Bakker, J. D., ... & Hautier, Y. (2022). Nutrients
555 and herbivores impact grassland stability across spatial scales through different pathways. *Global change biology*, 28(8),
556 2678-2688.

557

558 Craven, D., Eisenhauer, N., Pearse, W. D., Hautier, Y., Isbell, F., Roscher, C., ... & Manning, P. (2018). Multiple facets
559 of biodiversity drive the diversity–stability relationship. *Nature ecology & evolution*, 2(10), 1579-1587.

560

561 de Bello, F., Lavorel, S., Hallett, L. M., Valencia, E., Garnier, E., Roscher, C., ... & Lepš, J. (2021). Functional trait effects
562 on ecosystem stability: assembling the jigsaw puzzle. *Trends in Ecology & Evolution*, 36(9), 822-836.

563

564 de Bello, F., Šmilauer, P., Diniz-Filho, J. A. F., Carmona, C. P., Lososová, Z., Herben, T., & Götzenberger, L. (2017).
565 Decoupling phylogenetic and functional diversity to reveal hidden signals in community assembly. *Methods in Ecology*
566 *and Evolution*, 8(10), 1200-1211.

567

568 De Boeck, H. J., Bloor, J. M., Kreyling, J., Ransijn, J. C., Nijs, I., Jentsch, A., & Zeiter, M. (2018). Patterns and drivers
569 of biodiversity–stability relationships under climate extremes. *Journal of Ecology*, 106(3), 890-902.

570

571 de la Riva, E. G., Lloret, F., Pérez-Ramos, I. M., Marañón, T., Saura-Mas, S., Díaz-Delgado, R., & Villar, R. (2017). The
572 importance of functional diversity in the stability of Mediterranean shrubland communities after the impact of extreme
573 climatic events. *Journal of Plant Ecology*, 10(2), 281-293.

574

575 Díaz, S., Pascual, U., Stenseke, M., Martín-López, B., Watson, R. T., Molnár, Z., ... & Shirayama, Y. (2018). Assessing
576 nature's contributions to people. *Science*, 359(6373), 270-272.

577

578 Díaz, S., & Cabido, M. (2001). Vive la différence: plant functional diversity matters to ecosystem processes. *Trends in*
579 *ecology & evolution*, 16(11), 646-655.

580

581 Domeisen, D. I., Eltahir, E. A., Fischer, E. M., Knutti, R., Perkins-Kirkpatrick, S. E., Schär, C., ... & Wernli, H. (2022).
582 Prediction and projection of heatwaves. *Nature Reviews Earth & Environment*, 1-15.

583

584 Dormann, C. F., von Riedmatten, L., & Scherer-Lorenzen, M. (2017). No consistent effect of plant species richness on
585 resistance to simulated climate change for above-or below-ground processes in managed grasslands. *BMC ecology*, 17(1),
586 1-12.

587

588 Durka, W., & Michalski, S. G. 2012. Daphne: A dated phylogeny of a large European flora for phylogenetically informed
589 ecological analyses. *Ecology*, 93, 2297–2297.

590

591 EEA. (2017). Climate change, impacts and vulnerability in Europe 2016. An indicator-based report. ISBN 978-92-9213-
592 835-6. DOI: 10.2800/534806.

593

594 Fatichi, S., Pappas, C., & Ivanov, V. Y. (2016). Modeling plant–water interactions: an ecohydrological overview from
595 the cell to the global scale. Wiley Interdisciplinary Reviews: *Water*, 3(3), 327-368.

596

597 Fischer, F. M., Wright, A. J., Eisenhauer, N., Ebeling, A., Roscher, C., Wagg, C., ... & Pillar, V. D. (2016). Plant species
598 richness and functional traits affect community stability after a flood event. *Philosophical Transactions of the Royal
599 Society B: Biological Sciences*, 371(1694), 20150276.

600

601 Fischer, M., Bossdorf, O., Gockel, S., Hänsel, F., Hemp, A., Hessenmöller, D., ... & Weisser, W. W. (2010).
602 Implementing large-scale and long-term functional biodiversity research: The Biodiversity Exploratories. *Basic and
603 applied Ecology*, 11(6), 473-485.

604

605 Fox, J., & Weisberg, S. (2019). An {R} Companion to Applied Regression, Third Edition. Thousand Oaks CA: Sage.
606 URL: <https://socialsciences.mcmaster.ca/jfox/Books/Companion/>

607

608 Fox, J., & Weisberg, S. (2018). Visualizing fit and lack of fit in complex regression models with predictor effect plots and
609 partial residuals. *Journal of Statistical Software*, 87(9), 1-27. <https://www.jstatsoft.org/article/view/v087i09>

610

611 Gazol, A., & Camarero, J. J. (2016). Functional diversity enhances silver fir growth resilience to an extreme drought.
612 *Journal of Ecology*, 104(4), 1063-1075.

613

614 Ghazoul, J., Burivalova, Z., Garcia-Ulloa, J., & King, L. A. (2015). Conceptualizing forest degradation. *Trends in ecology
615 & evolution*, 30(10), 622-632.

616

617 Griffin-Nolan, R. J., Blumenthal, D. M., Collins, S. L., Farkas, T. E., Hoffman, A. M., Mueller, K. E., ... & Knapp, A.
618 K. (2019). Shifts in plant functional composition following long-term drought in grasslands. *Journal of Ecology*, 107(5),
619 2133-2148.

620

621 Grime, J. P. (1998). Benefits of plant diversity to ecosystems: immediate, filter and founder effects. *Journal of Ecology*,
622 86(6), 902-910.

623

624 Hallett, L. M., Stein, C., & Suding, K. N. (2017). Functional diversity increases ecological stability in a grazed grassland.
625 *Oecologia*, 183(3), 831-840.

626

627 Hinderling, J., Penone, C., Fischer, M., Prati, D., Hoelzel, N. (2023). Biomass data for grassland EPs, 2009 - 2022.
628 Version 6. Biodiversity Exploratories Information System. Dataset. [https://www.bexis.uni-
629 jena.de/ddm/data/Showdata/31448](https://www.bexis.uni-jena.de/ddm/data/Showdata/31448)

630
631 Hoover, D. L., Knapp, A. K., & Smith, M. D. (2014). Resistance and resilience of a grassland ecosystem to climate
632 extremes. *Ecology*, 95(9), 2646-2656.

633 Isbell, F., Adler, P. R., Eisenhauer, N., Fornara, D., Kimmel, K., Kremen, C., ... & Scherer-Lorenzen, M. (2017). Benefits
634 of increasing plant diversity in sustainable agroecosystems. *Journal of Ecology*, 105(4), 871-879.

635 Isbell, F., Craven, D., Connolly, J., Loreau, M., Schmid, B., Beierkuhnlein, C., ... & Eisenhauer, N. (2015). Biodiversity
636 increases the resistance of ecosystem productivity to climate extremes. *Nature*, 526(7574), 574-577.

637
638 Ives, A. R., Klug, J. L., & Gross, K. (2000). Stability and species richness in complex communities. *Ecology Letters*, 3(5),
639 399-411.

640
641 Ivits, E., Horion, S., Erhard, M., & Fensholt, R. (2016). Assessing European ecosystem stability to drought in the
642 vegetation growing season. *Global Ecology and Biogeography*, 25(9), 1131-1143.

643
644 Karlowisky, S., Augusti, A., Ingrisch, J., Hasibeder, R., Lange, M., Lavorel, S., ... & Gleixner, G. (2018). Land use in
645 mountain grasslands alters drought response and recovery of carbon allocation and plant-microbial interactions. *Journal*
646 *of Ecology*, 106(3), 1230-1243.

647
648 Kattge, J., Bönsch, G., Díaz, S., Lavorel, S., Prentice, I. C., Leadley, P., ... & Cuntz, M. (2020). TRY plant trait database–
649 enhanced coverage and open access. *Global change biology*, 26(1), 119-188.

650
651 Kreyling, J., Dengler, J., Walter, J., Velev, N., Ugurlu, E., Sopotlieva, D., ... & Jentsch, A. (2017). Species richness effects
652 on grassland recovery from drought depend on community productivity in a multisite experiment. *Ecology Letters*,
653 20(11), 1405-1413.

654
655 Laliberté, E., & Tylianakis, J. M. (2012). Cascading effects of long-term land-use changes on plant traits and ecosystem
656 functioning. *Ecology*, 93(1), 145-155.

657
658 Lavorel, S., & Garnier, É. (2002). Predicting changes in community composition and ecosystem functioning from plant
659 traits: revisiting the Holy Grail. *Functional ecology*, 16(5), 545-556.

660
661 Lepš, J., Götzenberger, L., Valencia, E., & de Bello, F. (2019). Accounting for long-term directional trends on year-to-
662 year synchrony in species fluctuations. *Ecography*, 42(10), 1728-1741.

663
664 Lepš, J., Osbornová-Kosinová, J., & Rejmánek, M. (1982). Community stability, complexity and species life history
665 strategies. *Vegetatio*, 50(1), 53-63.

666
667 Li, C., Jiang, Y., Wang, Z., Hogan, J. A., Luo, W., Xu, H., ... & Fang, S. (2022). Biodiversity stabilizes primary
668 productivity through compensatory effects under warming conditions. *Journal of Vegetation Science*, 33(2), e13124.

669
670 Lisner, A., Konečná, M., Blažek, P., & Lepš, J. Community biomass is driven by dominants and their characteristics—the
671 insight from a field biodiversity experiment with realistic species loss scenario. *Journal of Ecology*.

672
673 Lloret, F., Keeling, E. G., & Sala, A. (2011). Components of tree resilience: effects of successive low-growth episodes in
674 old ponderosa pine forests. *Oikos*, 120(12), 1909-1920.

675
676 Lorenzen, K., Vogt, J., Teuscher, M., Ostrowski, A., Thiele, J. (2022). Input Data for LUI Calculation Tool of all
677 grassland plots since 2006 - revised 2019. Version 9. Biodiversity Exploratories Information System. Dataset.
678 <https://www.bexis.uni-jena.de/ddm/data/Showdata/25086?version=9>
679
680 Lüdecke, D., & Mattan, S. (2021). performance: An R Package for Assessment, Comparison and Testing of Statistical
681 Models. *Journal of Open Source Software*, 6(60), 3139. <https://doi.org/10.21105/joss.03139>
682
683 Mackie, K. A., Zeiter, M., Bloor, J. M., & Stampfli, A. (2019). Plant functional groups mediate drought resistance and
684 recovery in a multisite grassland experiment. *Journal of Ecology*, 107(2), 937-949.
685
686 Mahecha, M. D., Bastos, A., Bohn, F. J., Eisenhauer, N., Feilhauer, H., Hartmann, H., ... & Wirth, C. (2022).
687 Biodiversity loss and climate extremes—study the feedbacks. *Nature*, 612, 30-32.
688
689 Májeková, M., Janeček, Š., Mudrák, O., Horník, J., Janečková, P., Bartoš, M., ... & de Bello, F. (2016). Consistent
690 functional response of meadow species and communities to land-use changes across productivity and soil moisture
691 gradients. *Applied Vegetation Science*, 19(2), 196-205.
692
693 Mariotte, P., Vandenberghe, C., Kardol, P., Hagedorn, F., & Buttler, A. (2013). Subordinate plant species enhance
694 community resistance against drought in semi-natural grasslands. *Journal of Ecology*, 101(3), 763-773.
695
696 Mathes, K. C., Ju, Y., Kleinke, C., Oldfield, C., Bohrer, G., Bond-Lamberty, B., ... & Gough, C. M. (2021). A
697 multidimensional stability framework enhances interpretation and comparison of carbon cycling response to
698 disturbance. *Ecosphere*, 12(11), e03800.
699
700 Matos, I. S., Menor, I. O., Rifai, S. W., & Rosado, B. H. P. (2020). Deciphering the stability of grassland productivity in
701 response to rainfall manipulation experiments. *Global Ecology and Biogeography*, 29(3), 558-572.
702
703 McCann, K. S. (2000). The diversity–stability debate. *Nature*, 405(6783), 228-233.
704
705 Miller, J. E., Li, D., LaForgia, M., & Harrison, S. (2019). Functional diversity is a passenger but not driver of drought-
706 related plant diversity losses in annual grasslands. *Journal of Ecology*, 107(5), 2033-2039.
707
708 Naeem, S., Duffy, J. E., & Zavaleta, E. (2012). The functions of biological diversity in an age of extinction. *Science*,
709 336(6087), 1401-1406.
710
711 Neilson, E. W., Lamb, C. T., Konkolics, S. M., Peers, M. J., Majchrzak, Y. N., Doran-Myers, D., ... & Boutin, S. (2020).
712 There's a storm a-coming: Ecological resilience and resistance to extreme weather events. *Ecology and evolution*, 10(21),
713 12147-12156.
714
715 Neyret, M., Manning, P. (2023). Trait data for all plant species, cleaned and aggregated from TRY. Version 5.
716 Biodiversity Exploratories Information System. Dataset. <https://www.bexis.uni-jena.de/ddm/data/Showdata/27610>
717
718 Nimmo, D. G., Mac Nally, R., Cunningham, S. C., Haslem, A., & Bennett, A. F. (2015). Vive la résistance: reviving
719 resistance for 21st century conservation. *Trends in ecology & evolution*, 30(9), 516-523.
720

721 Oliver, T. H., Heard, M. S., Isaac, N. J., Roy, D. B., Procter, D., Eigenbrod, F., ... & Bullock, J. M. (2015). Biodiversity
722 and resilience of ecosystem functions. *Trends in ecology & evolution*, 30(11), 673-684.

723

724 Oram, N. J., De Deyn, G. B., Bodelier, P. L., Cornelissen, J. H., van Groenigen, J. W., & Abalos, D. (2020). Plant
725 community flood resilience in intensively managed grasslands and the role of the plant economic spectrum. *Journal of*
726 *applied ecology*, 57(8), 1524-1534.

727 Ostrowski et al. (2020). Land use intensity index (LUI) calculation tool of the Biodiversity Exploratories project for
728 grassland survey data from three different regions in Germany since 2006. Zenodo.
729 <http://doi.org/10.5281/zenodo.3865579>

730 Perez-Harguindeguy, N., Diaz, S., Garnier, E., Lavorel, S., Poorter, H., Jaureguiberry, P., ... & Cornelissen, J. H. C.
731 (2013). New handbook for standardised measurement of plant functional traits worldwide. *Aust. Bot.*, 61, 167-234.

732 Pfisterer, A. B., & Schmid, B. (2002). Diversity-dependent production can decrease the stability of ecosystem
733 functioning. *Nature*, 416(6876), 84-86.

734

735 Pinheiro, J., Bates, D., DebRoy, S., Sarkar, D., R Core Team. (2021). nlme: Linear and Nonlinear Mixed Effects Models.
736 R package version 3.1-153, URL: <https://CRAN.R-project.org/package=nlme>

737

738 Pinheiro, J., & Bates, D. (2006). *Mixed-effects models in S and S-PLUS*. Springer science & business media.

739

740 Polley, H. W., Isbell, F. I., & Wilsey, B. J. (2013). Plant functional traits improve diversity-based predictions of temporal
741 stability of grassland productivity. *Oikos*, 122(9), 1275-1282.

742

743 Prati, D., Gossner, M., Neff, F. (2021). Leaf traits of most abundant plant species from all EPs, 2017/2018. Version 2.
744 Biodiversity Exploratories Information System. Dataset. [https://www.bexis.uni-](https://www.bexis.uni-jena.de//ddm/data/Showdata/24807?version=2)
745 [jena.de//ddm/data/Showdata/24807?version=2](https://www.bexis.uni-jena.de//ddm/data/Showdata/24807?version=2)

746 Rao, C. R. (1982). Diversity and dissimilarity coefficients: a unified approach. *Theoretical population biology*, 21(1), 24-
747 43.

748 Schäfer, D., Klaus, V. H., Kleinebecker, T., Boeddinghaus, R. S., Hinderling, J., Kandeler, E., ... & Prati, D. (2019).
749 Recovery of ecosystem functions after experimental disturbance in 73 grasslands differing in land-use intensity, plant
750 species richness and community composition. *Journal of Ecology*, 107(6), 2635-2649.

751

752 Slette, I. J., Post, A. K., Awad, M., Even, T., Punzalan, A., Williams, S., ... & Knapp, A. K. (2019). How ecologists define
753 drought, and why we should do better. *Global Change Biology*, 25(10), 3193-3200.

754

755 Smith, M. D. (2011). The ecological role of climate extremes: current understanding and future prospects. *Journal of*
756 *Ecology*, 99(3), 651-655.

757

758 Socher, S. A., Prati, D., Boch, S., Müller, J., Baumbach, H., Gockel, S., ... & Fischer, M. (2013). Interacting effects of
759 fertilization, mowing and grazing on plant species diversity of 1500 grasslands in Germany differ between regions. *Basic*
760 *and Applied Ecology*, 14(2), 126-136.

761

762 Socher, S. A., Prati, D., Boch, S., Müller, J., Klaus, V. H., Hölzel, N., & Fischer, M. (2012). Direct and productivity-
763 mediated indirect effects of fertilization, mowing and grazing on grassland species richness. *Journal of Ecology*, 100(6),
764 1391-1399.

765

766 Stampfli, A., Bloor, J. M., Fischer, M., & Zeiter, M. (2018). High land-use intensity exacerbates shifts in grassland
767 vegetation composition after severe experimental drought. *Global Change Biology*, 24(5), 2021-2034.

768

769 Stuart-Haëntjens, E., De Boeck, H. J., Lemoine, N. P., Mänd, P., Kröel-Dulay, G., Schmidt, I. K., ... & Smith, M. D.
770 (2018). Mean annual precipitation predicts primary production resistance and resilience to extreme drought. *Science of*
771 *the Total Environment*, 636, 360-366.

772

773 Suding, K. N., Lavorel, S., Chapin Iii, F. S., Cornelissen, J. H., Díaz, S., Garnier, E., ... & Navas, M. L. (2008). Scaling
774 environmental change through the community-level: A trait-based response-and-effect framework for plants. *Global*
775 *Change Biology*, 14(5), 1125-1140.

776

777 Symstad, A. J., & Tilman, D. (2001). Diversity loss, recruitment limitation, and ecosystem functioning: lessons learned
778 from a removal experiment. *Oikos*, 92(3), 424-435.

779

780 Tilman, D., Reich, P. B., & Knops, J. M. (2006). Biodiversity and ecosystem stability in a decade-long grassland
781 experiment. *Nature*, 441(7093), 629-632.

782

783 Tilman, D., & Downing, J. A. (1994). Biodiversity and stability in grasslands. *Nature*, 367(6461), 363-365.

784

785 Vicente-Serrano, S. M., Beguería, S., & López-Moreno, J. I. (2010). A multiscalar drought index sensitive to global
786 warming: the standardized precipitation evapotranspiration index. *Journal of climate*, 23(7), 1696-1718.

787

788 Violle, C., Navas, M. L., Vile, D., Kazakou, E., Fortunel, C., Hummel, I., & Garnier, E. (2007). Let the concept of trait
789 be functional!. *Oikos*, 116(5), 882-892.

790

791 Walde, M., Allan, E., Cappelli, S. L., Didion-Gency, M., Gessler, A., Lehmann, M. M., ... & Grossiord, C. (2021). Both
792 diversity and functional composition affect productivity and water use efficiency in experimental temperate grasslands.
793 *Journal of ecology*, 109(11), 3877-3891.

794

795 Wilcox, K. R., Koerner, S. E., Hoover, D. L., Borkenhagen, A. K., Burkepile, D. E., Collins, S. L., ... & Smith, M. D.
796 (2020). Rapid recovery of ecosystem function following extreme drought in a South African savanna grassland. *Ecology*,
797 101(4), e02983.

798

799 Wöllauer, S., Hänsel, F., Forteva, S., Naus, T. (2022). Open Climate Data of the Exploratories Project. Version 5.
800 Biodiversity Exploratories Information System. Dataset. <https://www.bexis.uni-jena.de/tcd/PublicClimateData/Index>

801

802 Xu, H., Xiao, J., & Zhang, Z. (2020). Heatwave effects on gross primary production of northern mid-latitude
803 ecosystems. *Environmental Research Letters*, 15(7), 074027.

804

805 Xu, C., McDowell, N. G., Fisher, R. A., Wei, L., Sevanto, S., Christoffersen, B. O., ... & Middleton, R. S. (2019).
806 Increasing impacts of extreme droughts on vegetation productivity under climate change. *Nature Climate Change*,
807 9(12), 948-953.

Appendix A1 - Computation of the slow-fast continuum variable

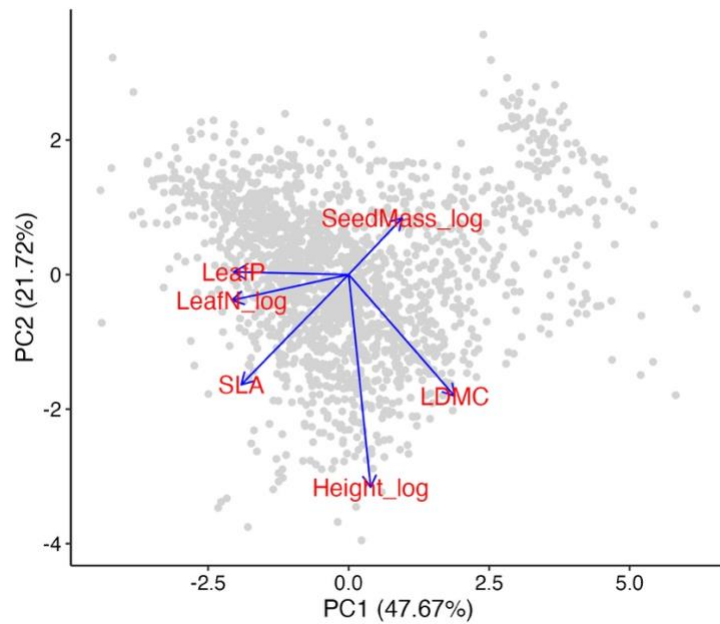


Figure A1 - Biplot showing the correlation between the community weighted means of the functional traits (specific leaf area, SLA; leaf dry matter content, LDMC; leaf nitrogen and phosphorus content, LeafP and LeafN; plant height, Height; seed mass, SeedMass) and the first two axes of the principal component analysis (PCA) that was used to derive the slow-fast continuum variable. The community weighted means of leaf nitrogen content, plant height and seed mass were computed on the log-transformed trait values. The slow-fast continuum was derived as the negative of the first principal component, so that low values of the axis were associated with slow-growing strategies, while large values indicated fast-growing strategies.

Appendix A2 - Temporal trend in the SPEI value

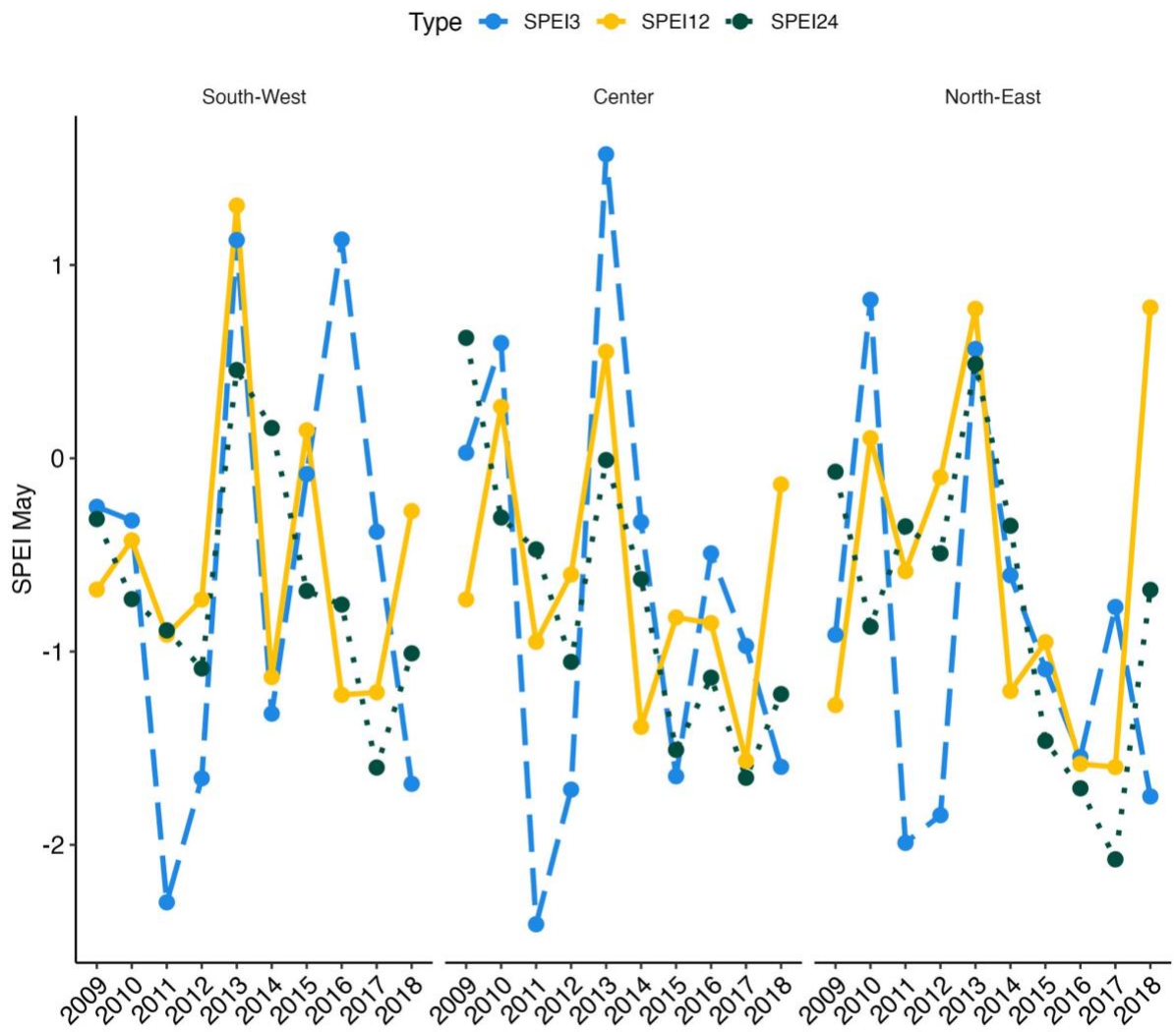


Figure A2 - Trend of the SPEI (of May) value in the three regions of the Biodiversity Exploratories: Schwäbische Alb (South-West); Hainich-Dün (Central); Schorfheide-Chorin (North-East).

Table A2 - Number of dry or wet years included within each class of the categorised SPEI-3/-12/-24. Number of years is given for each region: South-West (Schwäbische Alb); Central (Hainich-Dün) and North-East (Schorfheide-Chorin). 'Normal' indicates normal water balance.

SPEI-3/-12/-24			
	South-West	Central	North-East
Extreme drought	4, 0, 1	4, 2, 2	4, 2, 3
Moderate drought	0, 6, 6	1, 4, 3	3, 3, 2
Normal	5, 4, 4	5, 4, 6	3, 3, 6
Moderate wetness	2, 0, 0	0, 0, 0	1, 3, 0
Extreme wetness	0, 1, 0	1, 1, 0	0, 0, 0

Appendix A3 - Association between biomass, functional and taxonomic diversity, slow-fast continuum, and land-use intensity

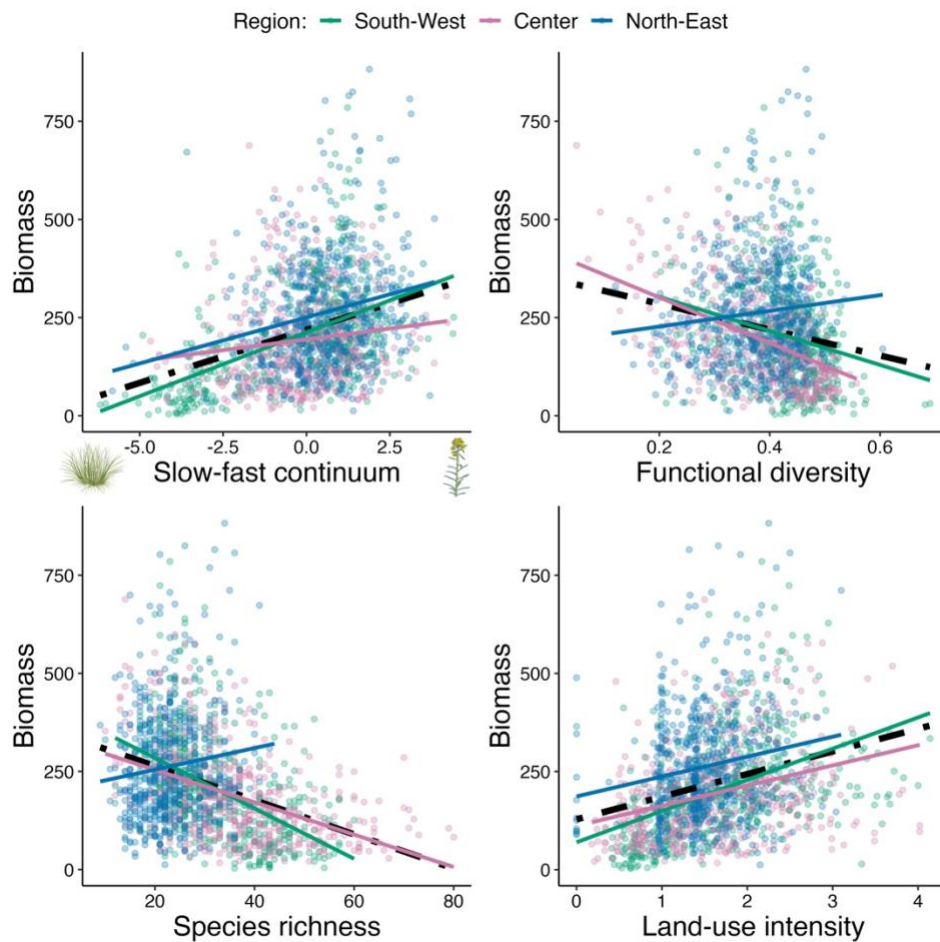


Figure A3.1 - Association between biomass *vs.* slow-fast continuum, functional diversity, species richness and land-use intensity. The black dot-dash line represents the overall association in the Biodiversity Exploratories (i.e., data from the three regions pooled together), whereas the coloured continuous lines represent the association within each region. An example of a slow-growing species (*Festuca* spp.) is located at the leftmost end of the slow-fast continuum, while an example of a fast-growing species (*Euphorbia esula*) is located at the rightmost end of the spectrum. Plant icons by Tracey Saxby (Integration and Application Network, ian.umces.edu/media-library), CC BY-SA 4.0 DEED. No changes were made to the original icons.

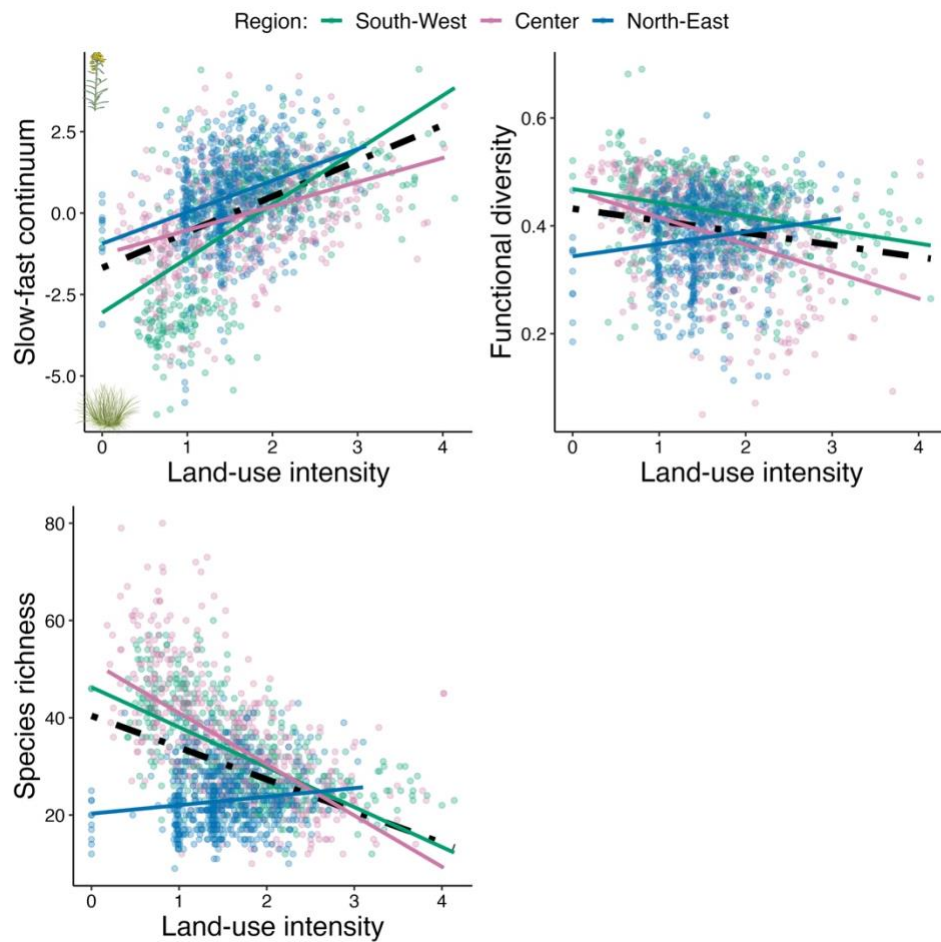


Figure A3.2 - Association between land-use intensity *vs.* slow-fast continuum, functional diversity and species richness. The black dot-dash line represents the overall association in the Biodiversity Exploratories (i.e., data from the three regions pooled together), whereas the coloured continuous lines represent the association within each region. An example of a slow-growing species (*Festuca* spp.) is located at the bottom end of the slow-fast continuum, while an example of a fast-growing species (*Euphorbia esula*) is located at the top end of the spectrum. Plant icons by Tracey Saxby (Integration and Application Network, ian.umces.edu/media-library), CC BY-SA 4.0 DEED. No changes were made to the original icons.

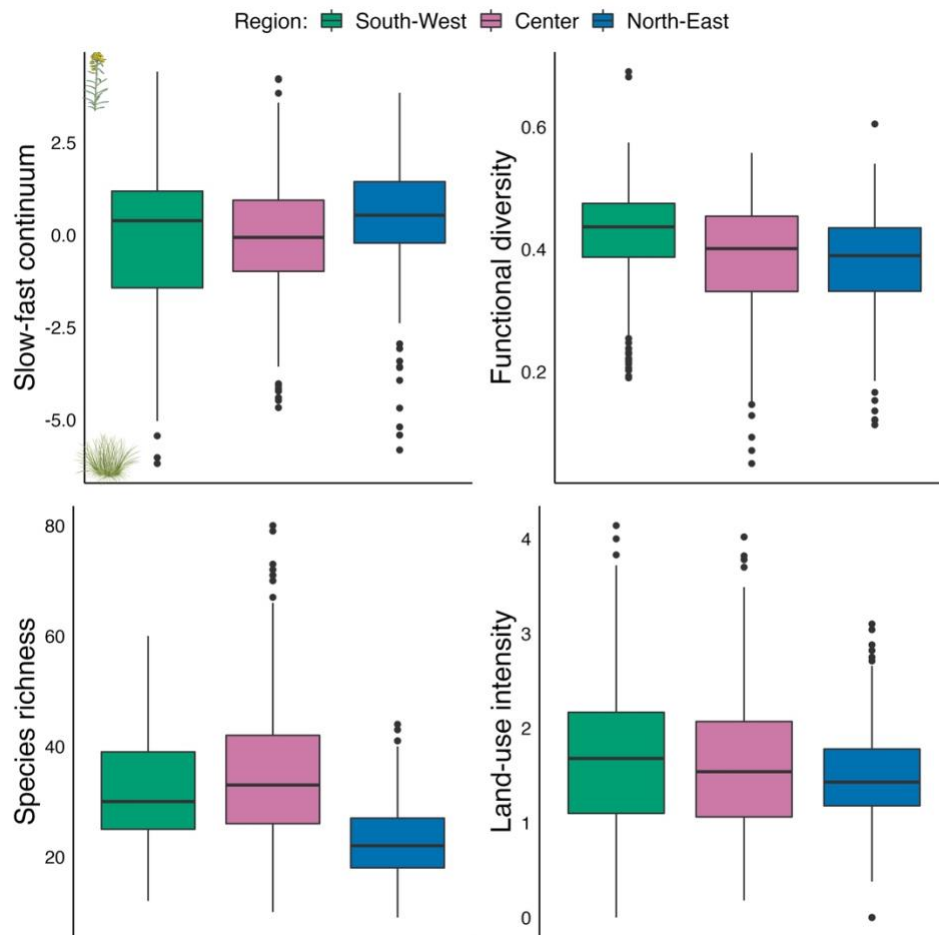


Figure A3.3 - Distribution of slow-fast continuum, functional diversity, species richness and land-use intensity in the three regions of the Biodiversity Exploratories (i.e., South-West, Center and North-East). An example of a slow-growing species (*Festuca* spp.) is located at the bottom end of the slow-fast continuum, while an example of a fast-growing species (*Euphorbia esula*) is located at the top end of the spectrum. Plant icons by Tracey Saxby (Integration and Application Network, ian.umces.edu/media-library), CC BY-SA 4.0 DEED. No changes were made to the original icons.

Appendix A4 - Association between log response ratios, biodiversity and land use over time

Results for LogR (annual log ratio)

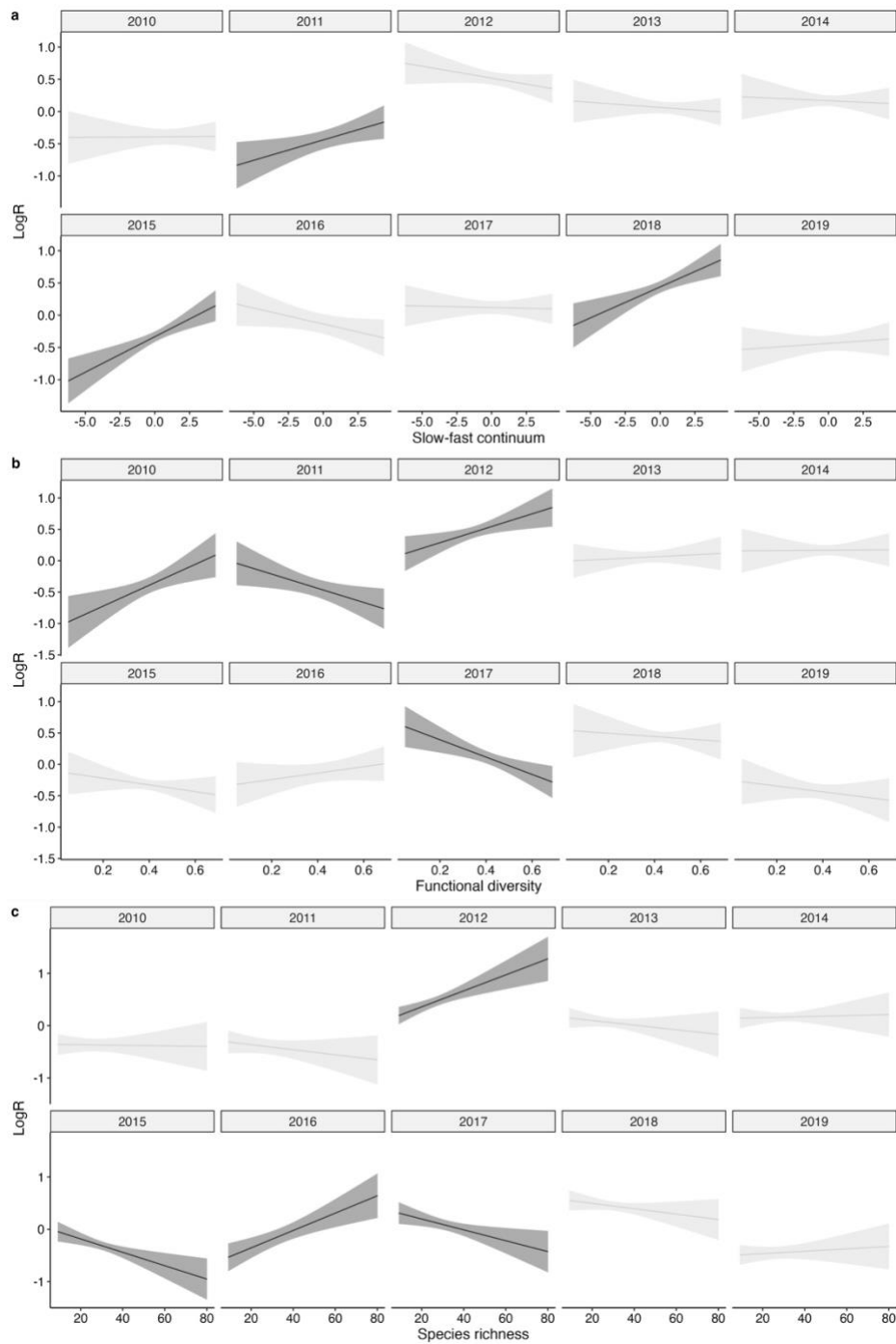


Figure A4.1 - Association between the LogR and slow-fast continuum (panel a), functional diversity (panel b) and species richness (panel c). The relationships between the functional components (slow-fast continuum and functional diversity), species richness and the LogR were analysed in separate models. Dark grey lines and ribbons highlight statistically significant relationships (not statistically significant relationships are reported in light grey).

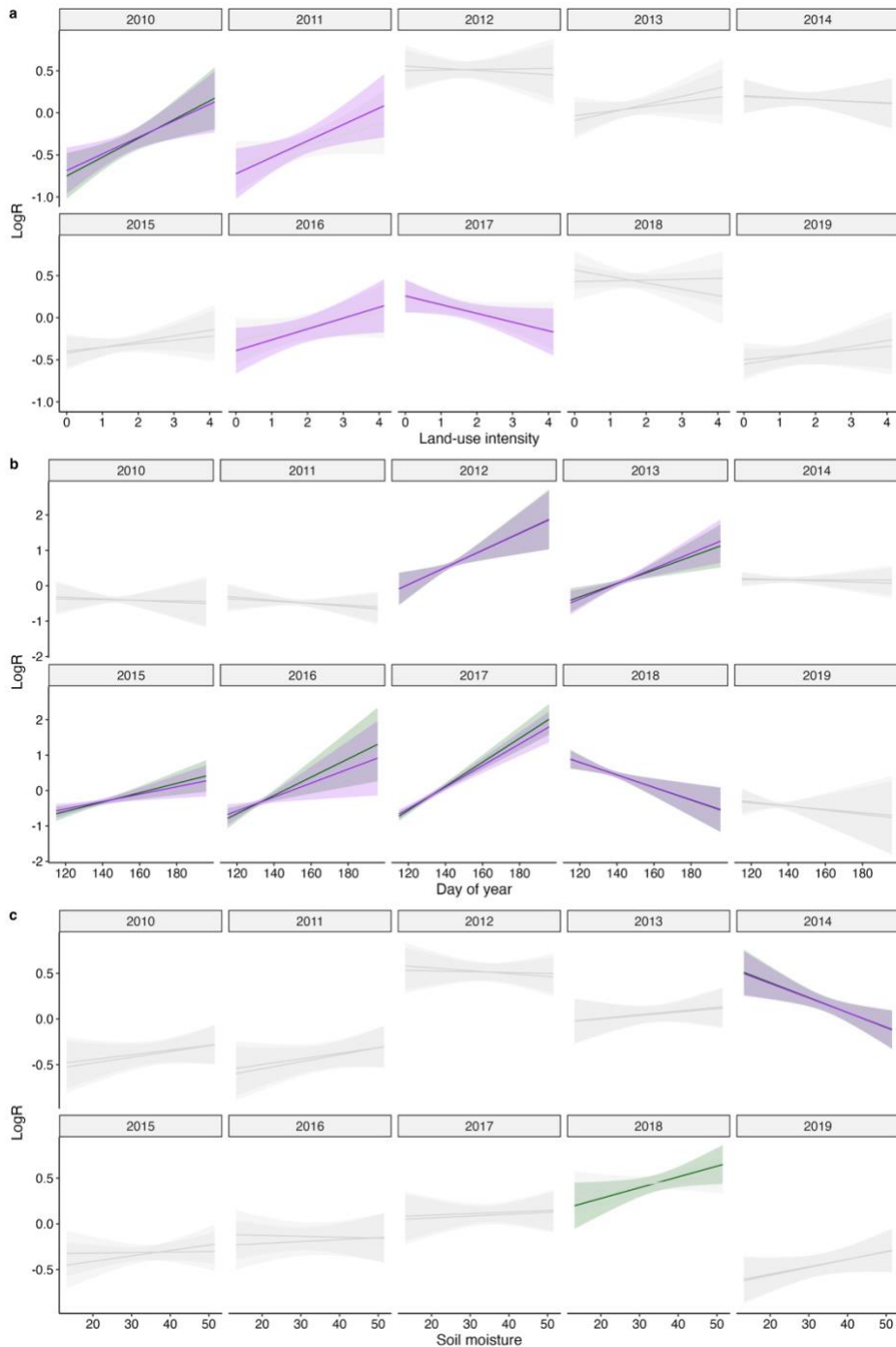


Figure A4.2 - Association between the LogR, land-use intensity (panel a), day of the year (i.e. day of biomass harvest, panel b) and soil moisture (panel c). Land-use intensity, day of year and soil moisture were included in both models including either the functional components (slow-fast continuum and functional diversity) or species richness. Statistically significant relationships are reported in green when detected in the model including the functional components, and in purple if detected in the model including species richness (not statistically significant relationships are reported in light grey).

Results for $\text{LogR}_{\text{ref-plot}}$ (plot reference log ratio)

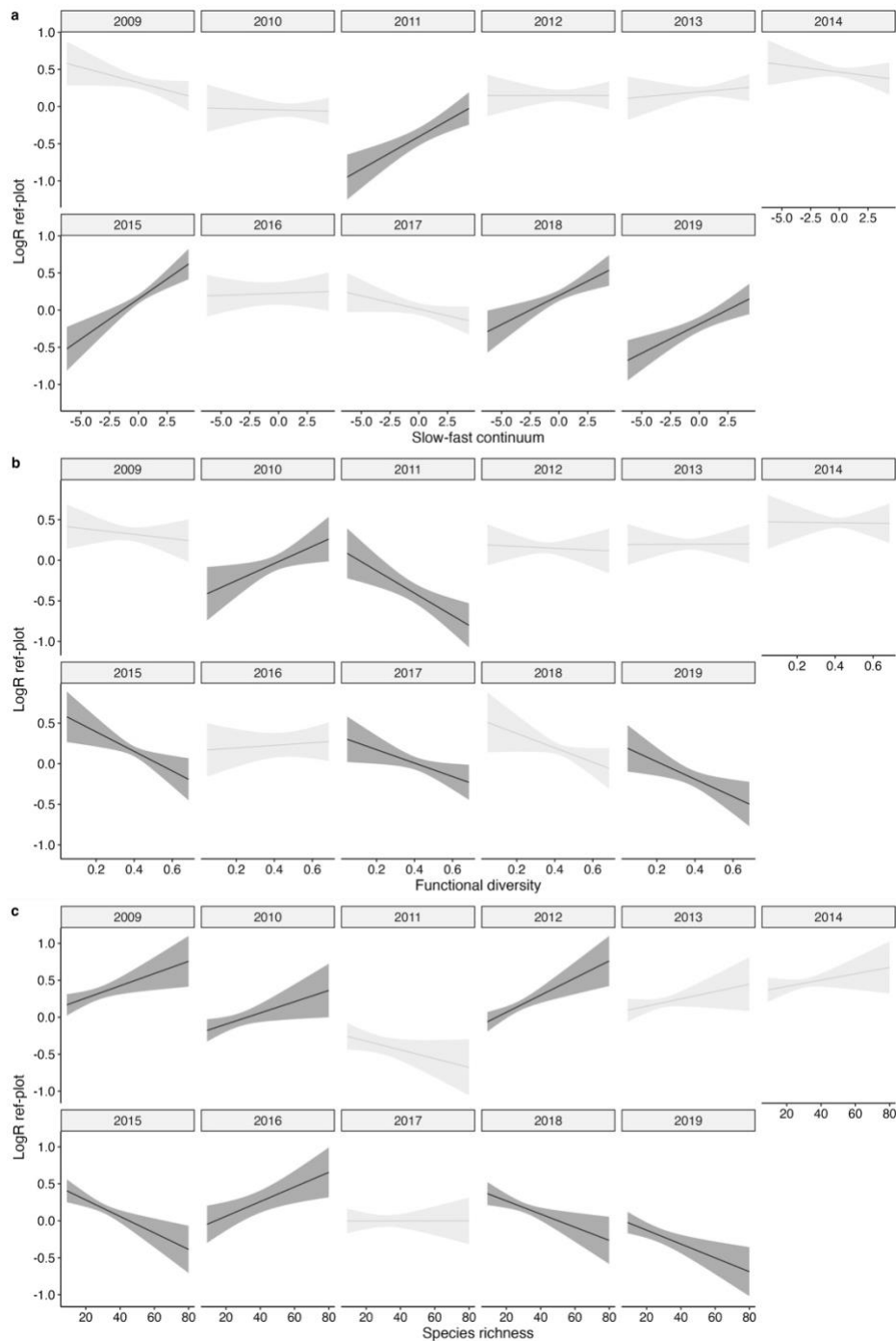


Figure A4.3 - Association between the $\text{LogR}_{\text{ref-plot}}$ and slow-fast continuum (panel a), functional diversity (panel b) and species richness (panel c). The relationships between the functional components (slow-fast continuum and functional diversity), species richness and the $\text{LogR}_{\text{ref-plot}}$ were analysed in separate models. Dark grey lines and ribbons highlight statistically significant relationships (not statistically significant relationships are reported in light grey).

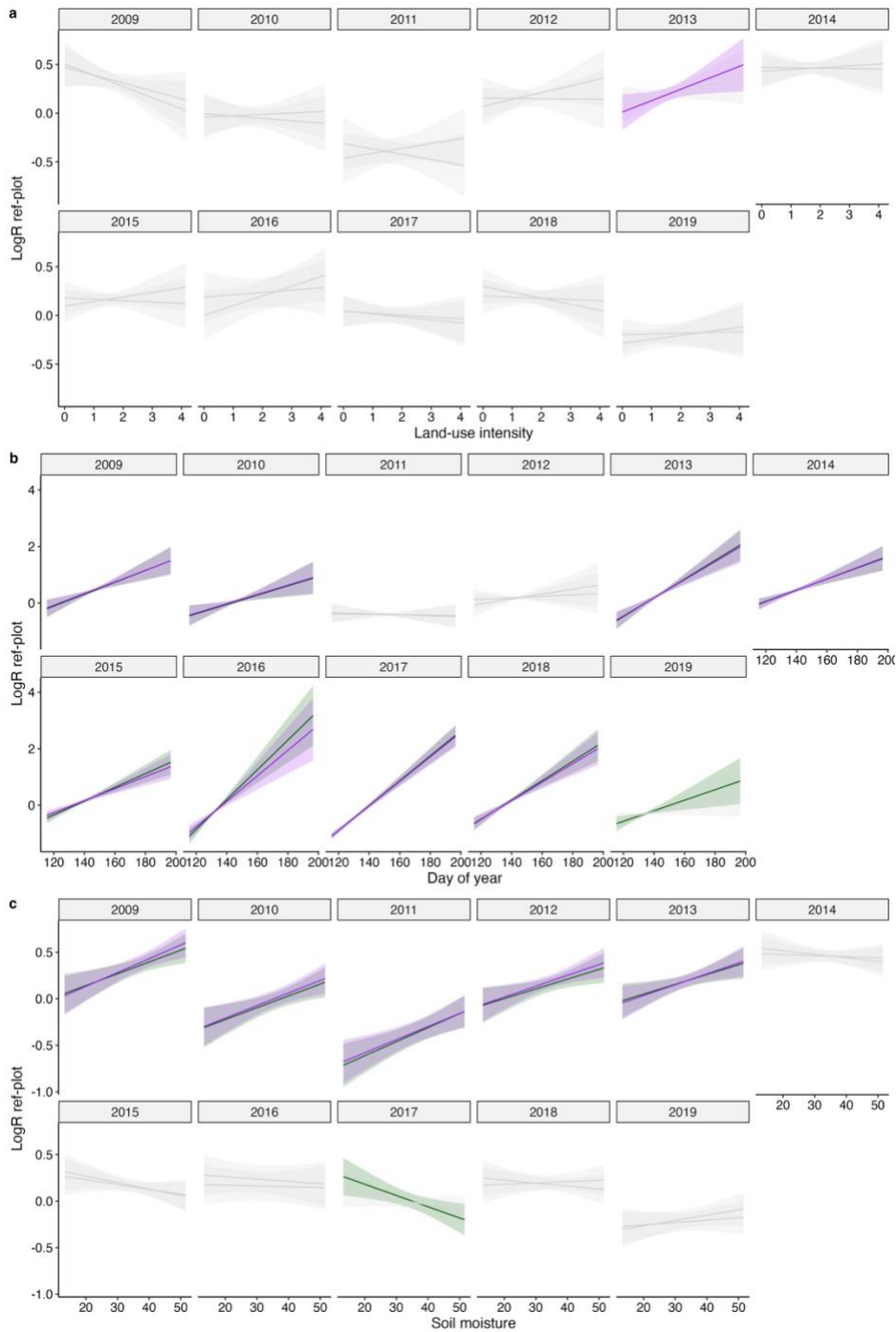


Figure A4.4 - Association between the $\text{LogR}_{\text{ref-plot}}$, land-use intensity (panel a), day of the year (i.e. day of biomass harvest, panel b) and soil moisture (panel c). Land-use intensity, day of year and soil moisture were included in both models including either the functional components (slow-fast continuum and functional diversity) or species richness. Statistically significant relationships are reported in green when detected in the model including the functional components, and in purple if detected in the model including species richness (not statistically significant relationships are reported in light grey).

Appendix A5 - Effect of the interaction between functional composition, functional diversity, species richness and SPEI on recovery

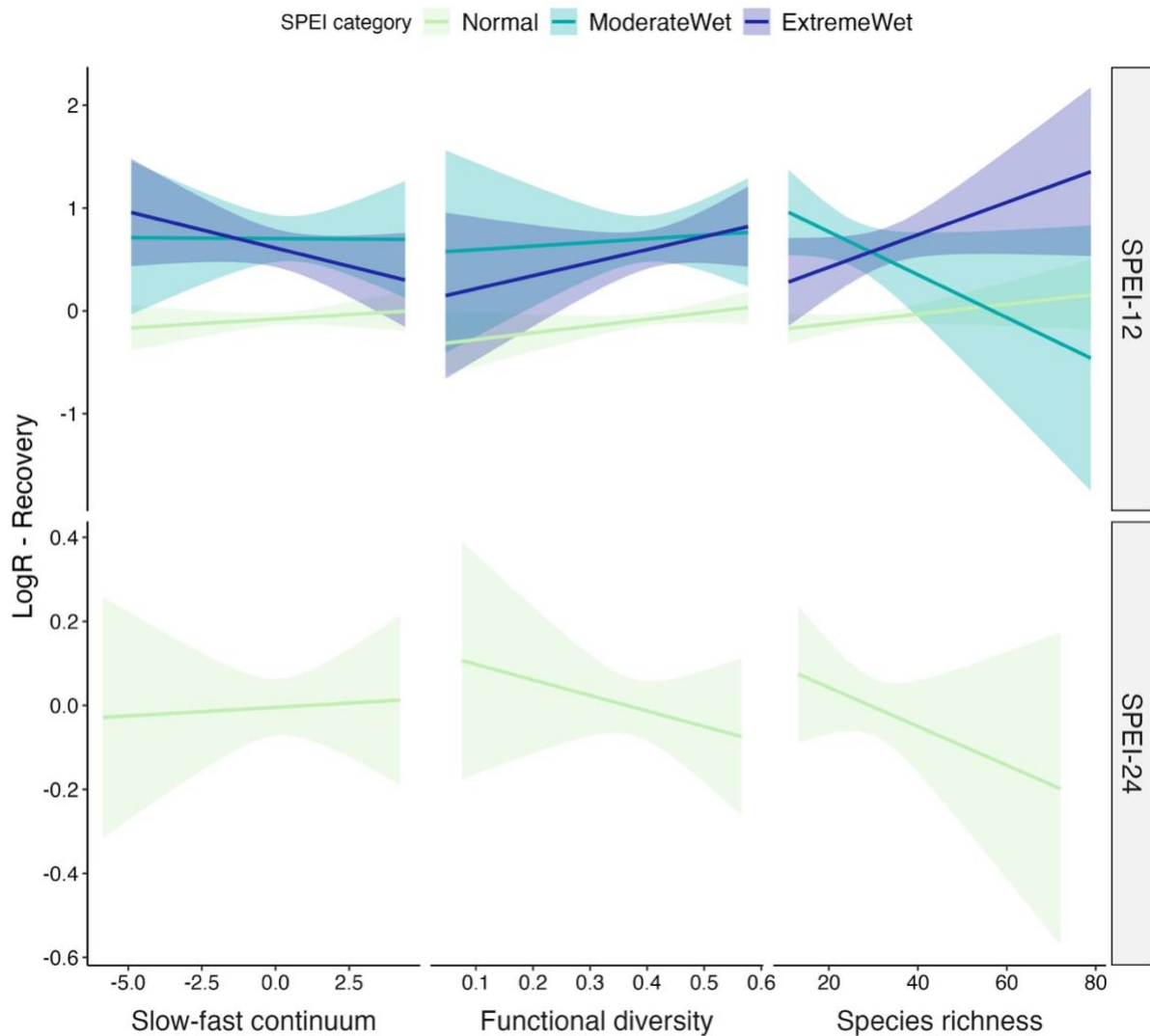


Figure A5.1 - Effect of the interaction between water availability (Standardised Precipitation Evapotranspiration Index -SPEI categories: normal, moderate and extreme wet) and slow-fast continuum, functional diversity and species richness (columns) on recovery (LogR). Results are reported for the SPEI-12 (annual) and SPEI-24 (biannual) (see rows) and pertain to models fitted on data from the year immediately after one or more (in a row) events of either moderate or extreme drought. Line colours represent different water availability conditions: from normal water budget (light green) to extreme (blue) wet. Bands represent 95% confidence intervals for conditional means.

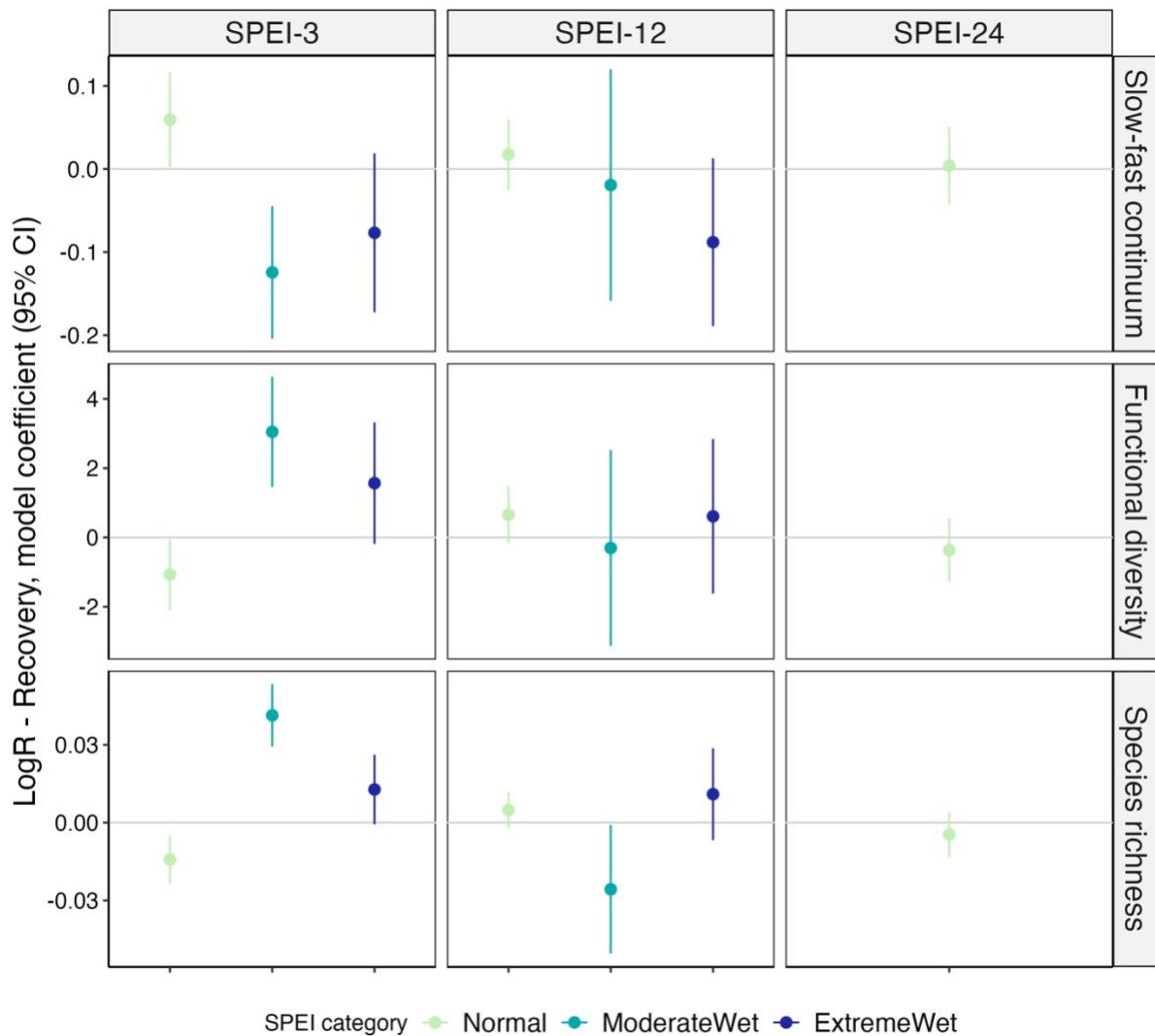


Figure A5.2 - Regression coefficients (and 95% confidence intervals for parameters) for models testing the interaction between slow-fast continuum, functional diversity, and species richness (rows) and the categorical Standardised Precipitation Evapotranspiration Index (SPEI-3/-12/-24, columns) on recovery. Normal (normal water budget) is the 'reference level' of the statistical interaction between slow-fast continuum, functional diversity, species richness and SPEI. Interaction terms (i.e., all coefficients except those for Normal) should be compared to the reference level to interpret how functional and taxonomic components supported grasslands recovery under different water availability.

Table A5.1 - Table of results for models including slow-fast continuum and functional diversity. Estimates of regression parameters are reported along with associated standard error of coefficient estimators (p-value for the test statistic in brackets). Num. Obs.: number of observations. R2: R-squared. Adj-R2: adjusted R-squared. The symbol '?' represents the interaction between two terms.

	SPEI-3 Estimate Std. error (p-value)	SPEI-12 Estimate Std. error (p-value)	SPEI-24 Estimate Std. error (p-value)
Intercept	-0.107 0.064 (0.094)	-0.228 0.052 (<0.001)	0.347 0.067 (<0.001)

ModerateWet	0.185 0.084 (0.029)	0.781 0.123 (<0.001)	-
ExtremeWet	0.076 0.118 (0.522)	0.682 0.099 (<0.001)	-
Central	-0.015 0.118 (0.896)	0.477 0.077 (<0.001)	-0.292 0.113 (0.011)
North-East	-0.137 0.082 (0.097)	-0.038 0.109 (0.728)	-0.777 0.108 (<0.001)
Slow-fast continuum	0.059 0.029 (0.042)	0.017 0.022 (0.420)	0.004 0.023 (0.862)
Functional diversity	-1.069 0.520 (0.041)	0.657 0.420 (0.119)	-0.369 0.464 (0.427)
Land-use intensity	0.002 0.055 (0.967)	0.041 0.052 (0.426)	-0.046 0.068 (0.495)
Day of the year	-0.006 0.006 (0.307)	-0.022 0.004 (<0.001)	0.016 0.008 (0.043)
Soil moisture	-0.002 0.004 (0.620)	0.005 0.005 (0.267)	0.008 0.005 (0.126)
ModerateWet:Slow-fast continuum	-0.124 0.040 (0.002)	-0.019 0.071 (0.786)	-
ExtremeWet:Slow-fast continuum	-0.077 0.049 (0.115)	-0.088 0.051 (0.087)	-
ModerateWet:Funct. diversity	3.048 0.809 (<0.001)	-0.303 1.441 (0.833)	-
ExtremeWet:Funct. diversity	1.568 0.891 (0.080)	0.610 1.135 (0.592)	-
Num. Obs.	293	440	148
R2	0.117	0.292	0.356
Adj-R2	0.076	0.270	0.324

Table A5.2 - Table of results for models including species richness. Estimates of regression parameters are reported along with associated standard error of coefficient estimators (p-value for the test statistic in brackets). Num. Obs.: number of observations. R2: R-squared. Adj-R2: adjusted R-squared. The symbol ‘:’ represents the interaction between two terms.

	SPEI-3 Estimate Std. error (p-value)	SPEI-12 Estimate Std. error (p-value)	SPEI-24 Estimate Std. error (p-value)
Intercept	-0.170 0.064 (0.009)	-0.219 0.050 (<0.001)	0.350 0.066 (<0.001)
ModerateWet	0.305 0.079 (<0.001)	0.617 0.140 (<0.001)	-
ExtremeWet	0.034 0.113 (0.767)	0.671 0.099 (<0.001)	-
Central	0.078 0.112 (0.489)	0.431 0.074 (<0.001)	-0.262 0.109 (0.017)
North-East	-0.074 0.095 (0.440)	0.005 0.113 (0.968)	-0.819 0.121 (<0.001)
Species richness	-0.014 0.005 (0.003)	0.005 0.003 (0.169)	-0.005 0.004 (0.296)
Land-use intensity	-0.020 0.053 (0.714)	0.070 0.049 (0.154)	-0.062 0.068 (0.367)
Day of the year	-0.007 0.006 (0.239)	-0.023 0.004 (<0.001)	0.016 0.008 (0.032)
Soil moisture	-0.003 0.004 (0.428)	0.002 0.005 (0.690)	0.007 0.005 (0.164)
ModerateWet:Species richness	0.041 0.006 (<0.001)	-0.026 0.013 (0.042)	-
ExtremeWet:Species richness	0.013 0.007 (0.061)	0.011 0.009 (0.225)	-
Num. Obs.	293	440	148
R2	0.179	0.290	0.358
Adj-R2	0.150	0.273	0.331

Table A5.3 - Models for recovery including slow-fast continuum and functional diversity. Analysis of variance table (Type II F-tests). SPEI: categorical predictor representing the different SPEI categories for recovery models (Normal, ModerateWet and ExtremeWet for SPEI-3 and -12). n.s.: not significant (i.e., p-value > 0.05). Sum sq.: sum of squares.

	SPEI-3			SPEI-12			SPEI-24		
	F	Df	p-value	F	Df	p-value	F	Df	p-value
SPEI	4.1097	2	*	50.8581	2	***	-	-	-
Slow-fast continuum	0.0128	1	n.s.	0.0946	1	n.s.	0.0304	1	n.s.
Functional diversity	0.0647	1	n.s.	3.2644	1	n.s.	0.6334	1	n.s.
Land-use intensity	0.0017	1	n.s.	0.6356	1	n.s.	0.4684	1	n.s.
Region	1.6927	2	n.s.	23.8118	2	***	26.3248	2	***
Day of the year	1.0488	1	n.s.	23.6855	1	***	4.1834	1	*
Soil moisture	0.2463	1	n.s.	1.2375	1	n.s.	2.3704	1	n.s.
SPEI:Slow-fast c.	4.8868	2	**	1.4780	2	n.s.	-	-	-
SPEI:Fun. div.	7.2721	2	***	0.1780	2	n.s.	-	-	-
Residuals (Sum sq.; Df)	63.10; 279			136.77; 426			23.77; 140		

Table A5.4 - Models for recovery including species richness. Analysis of variance table (Type II F-tests). SPEI: categorical predictor representing the different SPEI categories for recovery models (Normal, ModerateWet and ExtremeWet for SPEI-3 and -12). n.s.: not significant (i.e., p-value > 0.05). Sum sq.: sum of squares.

	SPEI-3			SPEI-12			SPEI-24		
	F	Df	p-value	F	Df	p-value	F	Df	p-value
SPEI	4.5843	2	*	49.2529	2	***	-	-	-
Species richness	0.0107	1	n.s.	1.3792	1	n.s.	1.0985	1	n.s.
Land-use intensity	0.1343	1	n.s.	2.0401	1	n.s.	0.8174	1	n.s.
Region	0.9339	2	n.s.	18.4116	2	***	24.5290	2	***
Day of the year	1.3941	1	n.s.	27.3520	1	***	4.6851	1	*
Soil moisture	0.6303	1	n.s.	0.1593	1	n.s.	1.9575	1	n.s.
SPEI:Sp. richness	23.0523	2	***	2.9788	2	n.s.	-	-	-
Residuals (Sum sq.; Df)	58.65; 282			137.14; 429			23.69; 141		

Appendix A6 - Effect of the interaction between functional composition, functional diversity, species richness and SPEI on resistance

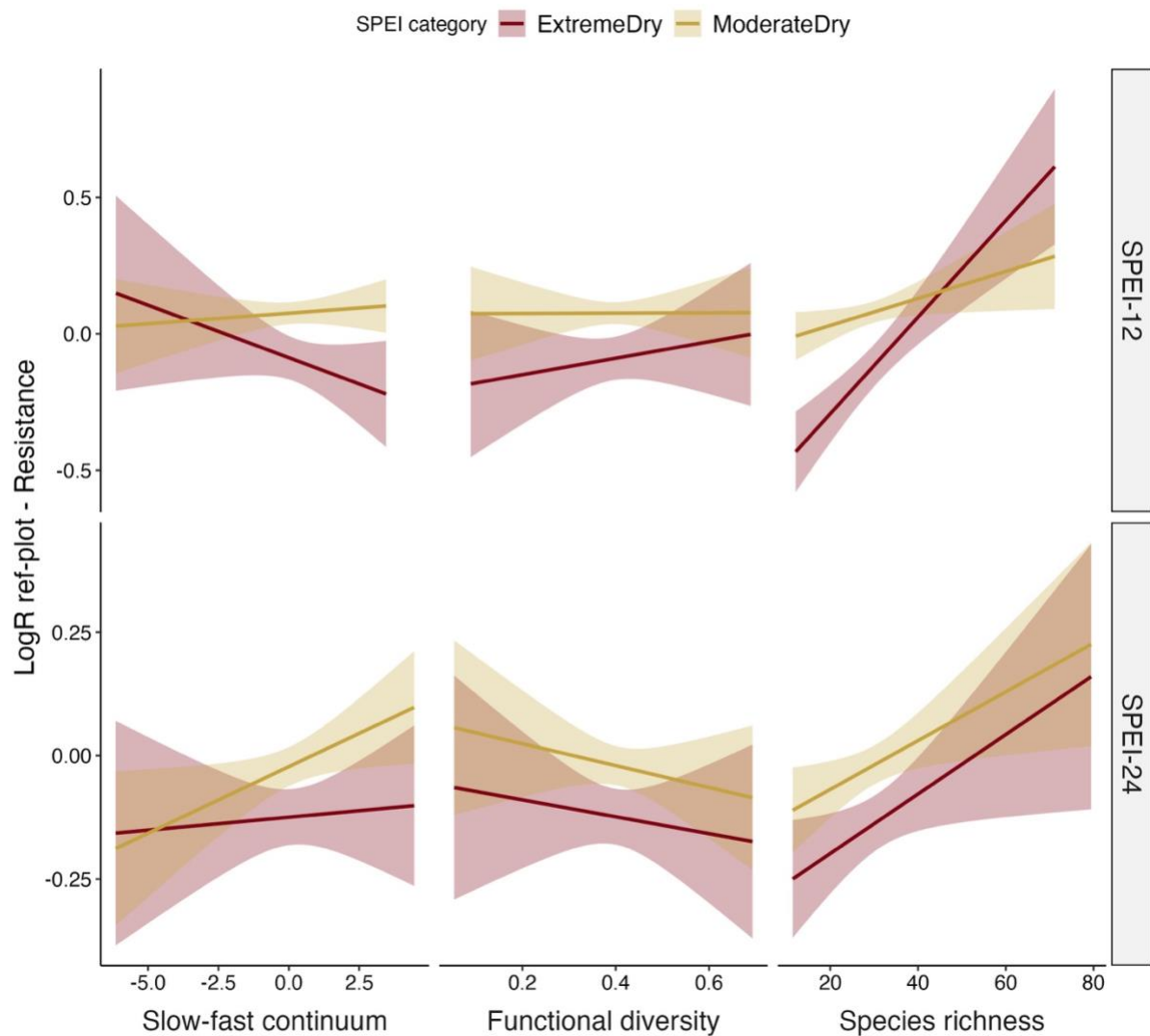


Figure A6.1 - Effect of the interaction between water availability (Standardised Precipitation Evapotranspiration Index - SPEI categories: moderate and extreme dry) and slow-fast continuum, functional diversity and species richness (columns) on resistance ($\text{LogR}_{\text{ref-plot}}$). Results are reported for the SPEI-12 (annual) and SPEI-24 (biannual) (see rows) and pertain to models fitted on data from the years featuring either moderate or extreme drought. Line colours represent different water availability conditions: from extreme (reddish) to moderate (ochre) drought. Bands represent 95% confidence intervals for conditional means.

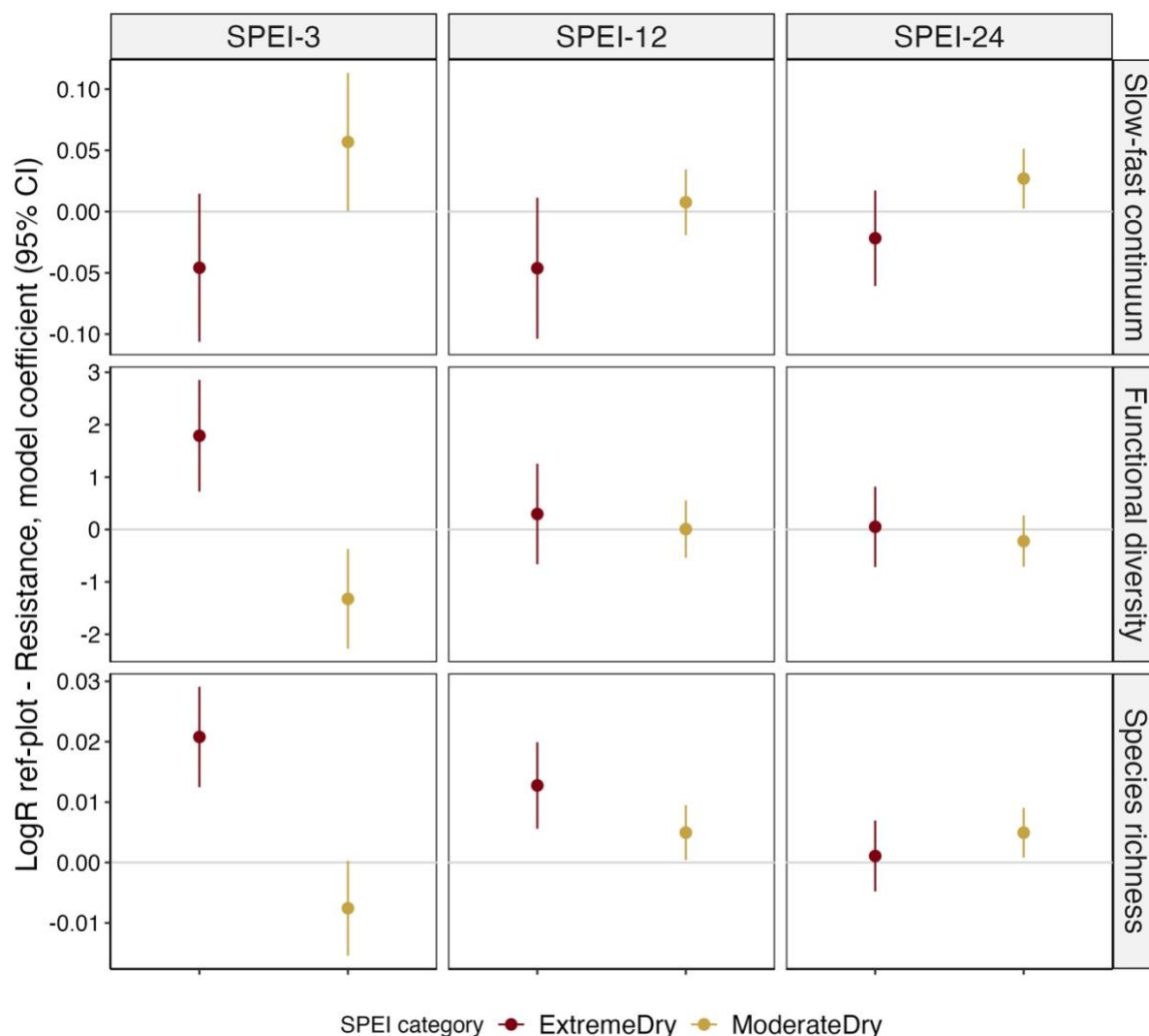


Figure A6.1 - Regression coefficients (and 95% confidence intervals for parameters) for models testing the interaction between slow-fast continuum, functional diversity, and species richness (rows) and the categorical Standardised Precipitation Evapotranspiration Index (SPEI-3/-12/-24, columns) on resistance. ModerateDry is the ‘reference level’ of the statistical interaction between slow-fast continuum, functional diversity, species richness and SPEI. Interaction terms for ExtremeDry should be compared to the reference level to interpret how functional and taxonomic components supported grasslands resistance under different drought intensity.

Table A6.1 - Table of results for models including slow-fast continuum and functional diversity. Estimates of regression parameters are reported along with associated standard error of coefficient estimators (p-value for the test statistic in brackets). Num. Obs.: number of observations. R2: R-squared. Adj-R2: adjusted R-squared. The symbol ‘?’ represents the interaction between two terms.

	SPEI-3 Estimate Std. error (p-value)	SPEI-12 Estimate Std. error (p-value)	SPEI-24 Estimate Std. error (p-value)
Intercept	-0.052 0.064 (0.414)	-0.031 0.034 (0.356)	-0.139 0.029 (<0.001)

ExtremeDry	-0.026 0.049 (0.599)	-0.166 0.048 (<0.001)	-0.103 0.038 (0.007)
Central	-0.025 0.056 (0.656)	0.097 0.049 (0.050)	0.199 0.045 (<0.001)
North-East	0.064 0.058 (0.270)	0.247 0.055 (<0.001)	0.203 0.046 (<0.001)
Slow-fast continuum	0.057 0.029 (0.048)	0.008 0.014 (0.574)	0.027 0.012 (0.030)
Functional diversity	-1.324 0.484 (0.006)	0.007 0.278 (0.981)	-0.222 0.250 (0.375)
Land-use intensity	0.076 0.036 (0.034)	0.029 0.033 (0.376)	0.046 0.028 (0.100)
Day of the year	0.015 0.002 (<0.001)	0.024 0.002 (<0.001)	0.026 0.002 (<0.001)
Soil moisture	0.004 0.003 (0.110)	-0.002 0.003 (0.574)	-0.001 0.002 (0.568)
ExtremeDry:Slow-fast continuum	-0.046 0.031 (0.137)	-0.046 0.029 (0.116)	-0.022 0.020 (0.274)
ExtremeDry:Funct. diversity	1.789 0.543 (0.001)	0.296 0.488 (0.545)	0.051 0.390 (0.897)
Num. Obs.	786	839	836
R2	0.134	0.241	0.254
Adj-R2	0.123	0.232	0.245

Table A6.2 - Table of results for models including species richness. Estimates of regression parameters are reported along with associated standard error of coefficient estimators (p-value for the test statistic in brackets). Num. Obs.: number of observations. R2: R-squared. Adj-R2: adjusted R-squared. The symbol ‘:’ represents the interaction between two terms.

	SPEI-3 Estimate Std. error (p-value)	SPEI-12 Estimate Std. error (p-value)	SPEI-24 Estimate Std. error (p-value)
Intercept	-0.117 0.061 (0.056)	-0.059 0.032 (0.064)	-0.167 0.028 (<0.001)

ExtremeDry	0.001 0.048 (0.978)	-0.194 0.047 (<0.001)	-0.119 0.038 (0.002)
Central	-0.054 0.052 (0.298)	0.101 0.045 (0.025)	0.206 0.043 (<0.001)
North-East	0.171 0.058 (0.003)	0.353 0.056 (<0.001)	0.306 0.048 (<0.001)
Species richness	-0.008 0.004 (0.059)	0.005 0.002 (0.032)	0.005 0.002 (0.018)
Land-use intensity	0.168 0.034 (<0.001)	0.088 0.032 (0.005)	0.117 0.027 (<0.001)
Day of the year	0.014 0.002 (<0.001)	0.023 0.002 (<0.001)	0.025 0.002 (<0.001)
Soil moisture	0.006 0.003 (0.023)	0.003 0.003 (0.339)	0.002 0.002 (0.465)
ExtremeDry:Species richness	0.021 0.004 (<0.001)	0.013 0.004 (<0.001)	0.001 0.003 (0.717)
Num. Obs.	786	839	836
R2	0.162	0.263	0.257
Adj-R2	0.153	0.256	0.250

Table A6.3 - Models for resistance including slow-fast continuum and functional diversity. Analysis of variance table (Type II F-tests). SPEI: categorical predictor representing the different SPEI categories for resistance models (ModerateDry and ExtremeDry). n.s.: not significant (i.e., p-value > 0.05). Sum sq.: sum of squares.

	SPEI-3			SPEI-12			SPEI-24		
	F	Df	p-value	F	Df	p-value	F	Df	p-value
SPEI	1.1700	1	n.s.	14.0853	1	***	7.6475	1	**
Slow-fast continuum	1.9339	1	n.s.	0.0022	1	n.s.	3.5304	1	n.s.
Functional diversity	0.0226	1	n.s.	0.1290	1	n.s.	0.9686	1	n.s.
Land-use intensity	4.5242	1	*	0.7833	1	n.s.	2.7070	1	n.s.
Region	1.7542	2	n.s.	10.5229	2	***	13.1350	2	***
Day of the year	66.4308	1	***	164.3991	1	***	159.6291	1	***
Soil moisture	2.5551	1	n.s.	0.3171	1	n.s.	0.3266	1	n.s.
SPEI:Slow-fast c.	2.2137	1	n.s.	2.4793	1	n.s.	1.1973	1	n.s.
SPEI:Fun. div.	10.8571	1	**	0.3670	1	n.s.	0.0169	1	n.s.
Residuals (Sum sq.; Df)	200.29; 775			200.27; 828			152.60; 825		

Table A6.4 - Models for resistance including species richness. Analysis of variance table (Type II F-tests). SPEI: categorical predictor representing the different SPEI categories for resistance models (ModerateDry and ExtremeDry). n.s.: not significant (i.e., p-value > 0.05). Sum sq.: sum of squares.

	SPEI-3			SPEI-12			SPEI-24		
	F	Df	p-value	F	Df	p-value	F	Df	p-value
SPEI	1.0403	1	n.s.	18.4705	1	***	9.6967	1	**
Species richness	15.2472	1	***	14.8979	1	***	8.0703	1	**
Land-use intensity	24.3099	1	***	7.7512	1	**	19.0224	1	***
Region	9.1697	2	***	20.4849	2	***	23.4911	2	***
Day of the year	53.5676	1	***	159.2213	1	***	144.4189	1	***
Soil moisture	5.2270	1	*	0.9146	1	n.s.	0.5335	1	n.s.
SPEI:Sp. richness	24.1568	1	***	12.2257	1	***	0.1314	1	n.s.
Residuals (Sum sq.; Df)	193.98; 777			194.56; 830			152.02; 827		