

1 **Article type:** Original Article

2 **Seawater temperature, but not pH, affects startle response**
3 **behaviour in a wide-ranging marine bivalve**

4 **Abbreviated title:** *Bivalve startle response under high temperature and low pH*

5 Jeff C. Clements^{1*}, Kirti Ramesh², Jacob Nysveen^{2,3}, Sam Dupont², Fredrik Jutfelt¹

6 1 Department of Biology, Norwegian University of Science and Technology, Høgskoleringen
7 5, 7491 Trondheim, Norway

8 2 Department of Biological and Environmental Sciences, University of Gothenburg,
9 Kristineberg Marine Research Centre, Kristineberg 566, 45178 Fiskebäckskil, Sweden

10 3 Havets Hus, Strandvägen 9, 45330 Lysekil, Sweden

11 ***Correspondence:** Jeff C. Clements, Ph.D.

12 jeffery.clements@dfo-mpo.gc.ca; jefferycclements@gmail.com

13 +1 (506) 851-2724

14

15

Current address: 42 Senese St., Moncton, NB E1E 0B8, Canada

16 **Lay summary**

17 When seawater temperatures are hot, adult hybrid blue mussels spend more time hiding from
18 predators. We show that high temperatures result in longer valve closure times following a tactile
19 predator cue, while low seawater pH has no effect. Longer closure times result in reduced
20 feeding and help explain temperature effects on mortality and energetic physiology in this
21 species, which may affect mussel ecosystem services. Adult mussels are likely vulnerable to
22 ocean warming but not acidification.

23 **Abstract**

24 Under the risk of predation, the first response of bivalves is to close their shells. The strength and
25 duration of valve closure can influence the probability of predator-related mortality. The
26 behavioral ecology of valve closure responses, however, is understudied and the effects of global
27 change stressors on these responses are unknown. We exposed two size classes of blue mussels
28 (*Mytilus edulis* × *trossulus*) to different combinations of temperature 15 and 19 °C) and pH (8.2
29 and 7.5 pH_T) for three months and subsequently measured individual time to open (i.e., startle
30 response) following a tactile cue over a series of four consecutive trials. Time to open was highly
31 repeatable on the short-term (adjusted R = 0.56) and decreased across the four trials from an
32 average of 390.0 ± 493.6 secs in Trial 1 (mean ± SD) to 252.6 ± 421.4 secs in Trial 4. On average,
33 individuals from the larger size class had a shorter time to open (154.1 ± 236.0 secs) than their
34 smaller-sized counterparts (453.4 ± 449.9 secs). High temperature significantly increased time to
35 open by 230%, on average, compared to low temperature, while pH had no effect. These results
36 suggest that bivalve time to open is repeatable, related to relative vulnerability to predation, and
37 affected by temperature. Given that increased closure times impact feeding and respiration, the
38 effect of temperature on closure duration may play a role in the sensitivity to ocean warming in
39 this species and contribute to ecosystem-level effects.

40 **Keywords:** anti-predator response; carbon dioxide; environmental stress; global change biology;
41 ocean acidification; ocean warming

42 **Introduction**

43 Predator-prey interactions have long been considered a fundamental component of animal ecology,
44 as the ways in which predators and their prey interact is a major driving force shaping the ecology
45 and evolution of biological systems (Connell 1961; Paine 1966; Dawkins and Krebs 1979;
46 Klompmaker et al. 2019). For predators, the successful capture and consumption of prey is
47 important for growth and survival. For prey, defence and avoidance against a predator's attack is
48 critical for survival.

49 To combat predation, prey can employ a tremendous variety of defenses, including chemical,
50 morphological, and behavioral defenses (Harvell 1990; Lima and Dill 1990; Kats and Dill 1998).
51 One of the more common ways of avoiding an immediate predator attack is to simply move away
52 from a predator. For semi-sessile animals such as many bivalves, however, this defense is not an
53 option for immediate attacks (although these animals can move and aggregate given sufficient time
54 to do so; Reimer and Tedengren 1996; Côté and Jelnikar 1999; Casey and Chattopadhyay 2008).
55 Instead, bivalves rely heavily on a suite of inducible morphological defenses, often related to shell
56 morphology and substrate attachment strength (Smith and Jennings 2000; Trussell and Smith
57 2000; Christensen et al. 2012; Lord and Whitlatch 2012; Scherer et al. 2018). Additionally,
58 behavioral responses such as burrowing, aggregating, and valve closures play an important role in
59 predator avoidance in these animals (Reimer and Tedengren 1996; Côté and Jelnikar 1999; Smee
60 and Weissburg 2006; Nicastro et al. 2007; Casey and Chattopadhyay 2008; Flynn and Smee 2010;
61 Robson et al. 2010), particularly given that inducible defenses can take long periods of time to
62 accrue whereas many behavioral defenses are instantaneous.

63 Although the repertoire of anti-predator behaviors for semi-sessile bivalves is more limited than
64 vagile species, often the most immediate response to the threat of predation is to close their valves
65 and 'hide' (Robson et al. 2007; Robson et al. 2010; Carroll and Clements 2019). This avoidance
66 strategy is thought to reduce the probability of being detected by predators (as hiding would reduce
67 the emittance of chemical cues that predators could detect) and can reduce the probability of
68 predators successfully accessing and consuming the tissue (Barbeau and Sceibling 1994; Carroll
69 and Clements 2019). As such, the effectiveness of this strategy will depend on the strength of valve
70 closure (weaker closure would allow predators to detect cues and open shells more easily) and the
71 (Wilson et al. 2012)duration of closure (opening too soon would increase the probabilities of
72 detection and the predator preventing further closure and successfully consuming the bivalve).
73 While the strength of valve closure is predominantly dictated morphologically by adductor muscle
74 strength, the duration of valve closure is determined by an individual's behavioral decision. Under
75 the threat of predation, the duration of valve closure thus represents a startle response in semi-
76 sessile bivalves (as measured and defined in previous studies; e.g. (Rudin and Briffa 2012; Wilson
77 et al. 2012).

78 While it is known that semi-sessile bivalves close their shells and exhibit a startle response under
79 the threat of predation, aspects of the behavioral ecology of this response are understudied. Living
80 in clusters as opposed to being solitary can reduce time to open in freshwater mussels (Wilson et
81 al. 2012), likely resulting from reduced vulnerability to predation for group-living bivalves (and
82 hence representing a measure of boldness in these animals; (Côté and Jelnikar 1999; Casey and
83 Chattopadhyay 2008; Kobak and Ryńska 2014). Wilson et al. (2012) also suggested that startle
84 responses were repeatable in freshwater bivalves, but did not directly quantify the repeatability of
85 this measure. Recent evidence also suggests that cue type can affect valve closure responses to

86 predators (Dzierżyńska-Białończyk et al. 2019). Startle responses could be affected by other
87 factors as well, such as size (larger mussels are less vulnerable to predation than smaller mussels;
88 Sommer et al. 1999) and time (time to open may change over short- and long-time scales due to
89 fatigue or habituation). Such aspects of the behavioral ecology of valve closure responses to
90 predator attacks, however, remain unexplored.

91 It is widely documented that predator-prey dynamics can be affected by global change stressors
92 (Bretagnolle and Terraube 2010; Romero et al. 2018). In the marine realm, studies report that both
93 ocean warming and acidification can affect predator-prey interactions in fish (Allan et al. 2017)
94 and invertebrates (Sanford et al. 2014; Wright et al. 2018; Lord et al. 2019; but see Landes and
95 Zimmer (2012) and Sundin et al. (2017) for contrasting results). With respect to invertebrates,
96 however, much of this work has focused on alterations in predator-prey dynamics resulting from
97 morphological effects. As such, only a handful of studies regarding prey defenses, including startle
98 responses, are available (Clements and Comeau 2019a). For example, in hermit crabs, exposure to
99 increased temperature reduced the mean time to open and increased inter-individual variation,
100 which was suggested to be a function of temperature effects on metabolism (Briffa et al. 2013). A
101 few studies have also tested for effects of seawater pH on prey defenses, reporting varied effects
102 (but not all relating to startle responses; Bibby et al. 2007; Manríquez et al. 2013; Watson et al.
103 2014; Turra et al. 2019). However, the combined effects of temperature and pH on invertebrate
104 startle responses are virtually absent from the literature. Such studies are important since
105 alterations to animal behavior under global change are likely to drive ecosystem-level impacts
106 (Kroeker et al. 2014; Nagelkerken and Munday 2016).

107 The overarching goal of this study was thus two-fold: 1) to assess aspects related to the behavioral
108 ecology of bivalve startle responses including short-term repeatability, changes over time, and

109 body size; and 2) to test the combined effects of pH and temperature on bivalve startle responses.
110 To address these research goals, we conducted laboratory experiments using an ecologically and
111 economically important bivalve (*Mytilus edulis* × *trossolus*). We predicted that: 1) startle responses
112 would be repeatable; 2) individual time to open would decrease over time (trials) due to either
113 fatigue or habituation; 3) larger animals would have a shorter startle response because they are less
114 vulnerable to predation (Sommer et al. 1999); 4) higher temperature would reduce time to open
115 because of higher metabolism and an increased need for oxygen and nutrient uptake (Briffa et al.
116 2013); and 5) low pH would affect the startle response as CO₂-induced pH declines are reported
117 to have wide-ranging behavioral effects (Clements and Hunt 2015).

118 **Materials and Methods**

119 *Animal collection and husbandry*

120 Adult mussels (Figure S1a) were hand-collected from the side of a nearshore pier at a depth of 0–
121 1 m in the Gullmar Fjord, adjacent to the Kristineberg Marine Research and Innovation Centre
122 (KMRIC; 58.250 °N, 11.447 °E). The mussels were transported to a temperature-controlled wet
123 lab at the KMRIC where they were cleaned of epibionts. The animals were then placed in flow-
124 through aquaria with ambient surface seawater (filtered to remove rocks, sediment, and larger
125 animals while allowing plankton to pass) from the fjord for 12–14 days prior to experimentation
126 to allow acclimation to laboratory conditions. During the acclimation period, mussels fed on a
127 natural diet of plankton from the fjord and were subjected to a 12:12 light:dark cycle (08:30–20:30
128 light). Mortality was checked every two days and any dead mussels were removed from the
129 acclimation chambers; mortality was minimal (<3%) and mussels fed as evidenced by the
130 consistent production of both faeces and pseudofaeces. Following acclimation, the mussels were

131 weighed (wet weight), measured (shell length), individually labelled (with nail polish), and
132 separated into two distinct size classes based on pre-exposure shell length: small (<58 mm; mean
133 \pm SD = 49.6 ± 4.4 mm shell length; 16.3 ± 4.4 g wet weight) and large (>59 mm; 67.1 ± 5.5 mm
134 shell length; 40.0 ± 9.8 g wet weight) (Figure 1a). The animals were then placed into their
135 experimental replicate tanks (Figure S1b,c) upon which exposure to temperature and pH treatments
136 (see below) commenced.

137 *Experimental design and setup*

138 A 2 \times 2 \times 2 design was employed with two size classes (small and large; as above), two pH levels
139 (ambient and -0.7 units), and two temperatures (16 °C and 20 °C [$+4$ °C]) crossed in a fully-
140 factorial manner. Size classes were chosen based on vulnerability to sea star predation in a
141 comparable biological community (Baltic Sea), whereby the small size class was at the upper end
142 of sizes consumed by sea stars, while the large size class was well above a size refuge threshold
143 and are considered safe from sea star predation (Sommer et al. 1999). We used a small size class
144 that was at the upper end of the size refuge threshold reported for the Baltic Sea because
145 invertebrates in the Baltic Sea are generally smaller than on the west coast of Sweden due to low
146 salinity conditions in the Baltic (Westerbom et al. 2002). Although these specific thresholds may
147 not directly translate to the Gullmar Fjord system, we assumed that the relative vulnerability to
148 predation (not only from sea stars, but from other predators such as crabs and fish) would be greater
149 for the smaller size class. Furthermore, while increasing valve closure times may not be an efficient
150 strategy for avoiding sea star predation (based on sea stars' mode of feeding), it would be for other
151 predators in the Gullmar Fjord system such as crabs and fish. Temperature and pH treatments
152 were designed to simulate deviations from ambient conditions in the fjord according to near future
153 projections. We used a temperature offset of $+4$ °C following ambient temperatures until they

154 reached 16 °C after which temperature conditions were kept constant at 16 °C (low) and 20 °C
155 (high) (Figure S2). We capped temperature manipulations at 16 °C and 20 °C to avoid temperature-
156 related mortality that can occur during long exposures to temperatures above 20°C (Clements et
157 al. 2018) and to avoid spawning. A pH offset of -0.7 units was employed, which represented an
158 ocean acidification scenario corresponding to the extreme of the natural variability expected by
159 2100. This scenario was based on a -0.3 unit differential from the minimum pH currently observed
160 in the fjord (0.4 units; low pH \approx 7.6 from a mean of \approx 8.1 according to Dorey et al. 2013)

161 (Figure S2).

162 A flow-through seawater system was constructed to expose animals to experimental temperature
163 and pH conditions (Figure S1b). Ambient seawater was continuously pumped directly from the
164 Gullmar Fjord into each of 12 header tanks ($n = 3$ header tanks per temperature \times pH treatment).
165 The water entered the lab through one of two lines, each of which were equipped with in-line
166 temperature controllers to maintain the desired conditions for each temperature treatment.
167 Seawater pH was manipulated in six of the header tanks via pure CO₂ injection which was
168 maintained with a pH-stat control system (Aqua Medic, Bissendorf, Germany); pH was left at
169 ambient conditions in the other six header tanks. Salinity was left uncontrolled in all treatments
170 and varied naturally with ambient conditions in the fjord (Figure S2). The water in all 12 header
171 tanks was continuously aerated to ensure proper mixing, oxygenation, and gas equilibration.

172 Seawater from each header tank was gravity fed into two exposure tanks (4 L) where the animals
173 were held, one exposure tank for each size class (Figure S1b,c; $n = 5$ mussels replicate tank⁻¹; $N =$
174 120 mussels). Flow rate to the exposure chambers was adjusted to \approx 3 ml s⁻¹ (\approx 22.2 min for one
175 volume turnover). Mussels fed on the natural diet of plankton available in the seawater and were

176 exposed to a 12:12 light:dark cycle as above. Filtration and ingestion of food was confirmed by
177 the continual presence of faeces and pseudofaeces throughout the experiment, which was siphoned
178 off to clean the exposure tanks as needed. Mortality, which was negligible ($n = 4/120$, 3%), was
179 checked daily and dead mussels were immediately removed from the exposure tanks. The animals
180 were exposed to experimental conditions for 88–93 days depending on the day in which
181 individuals were subjected to behavioral assays (behavioral assays took six days to complete and
182 different mussels were tested on each day).

183 Temperature and pH conditions in the exposure and header tanks were measured every 1–6 days
184 to ensure that offsets were consistent (Figure S2). Temperature was measured with a high precision
185 digital thermometer (± 0.1 °C accuracy; testo-112, Testo, Lenzkirch, Germany). Seawater pH was
186 measured on the total scale (pH_T) with a benchtop pH meter (Metrohm 827 pH lab, Metrohm,
187 Herisau, Switzerland) calibrated with TRIS (Tris/HCl) and AMP (2-aminopyridine/HCl) buffers.
188 The pH stat systems were adjusted accordingly whenever seawater parameters were measured for
189 temporal pH offset consistency. Salinity was also recorded at the time of temperature and pH
190 measurement from the KMRIC website
191 (<https://www.weather.loven.gu.se/kristineberg/en/data.shtml>) with the exception of measurements
192 on and after 27 July, which were measured directly with a handheld salinity meter (WTW,
193 Weilheim, Germany) due to a lack of data availability on the KMRIC website. Total alkalinity
194 (A_T) was measured weekly by titration of 25 mL filtered ($2\mu\text{m}$) samples using a SI Analytics
195 Titroline potentiometric titrator. Carbonate system parameters (TCO_2 , $p\text{CO}_2$, Ω_{calcite} , and $\Omega_{\text{aragonite}}$)
196 were estimated in CO2SYS v2.1 (Pierrot et al. 2009) for each measurement of temperature,
197 salinity, and pH_T above, using the A_T value from the closest day and the first and second
198 dissociation constants of Mehrbach et al. (1973) refit by Dickson and Millero (1987). The methods

199 above provided highly consistent temperature and carbonate system offset conditions (Figure S2);
 200 mean values are provided in Table 1.

Table 1. Abiotic parameters of the experimental treatments. Data are means \pm standard deviation. Raw data can be found in in Supplementary file 3 ('Carbonate chemistry' sheet) and full CO2SYS results are in Supplementary file 4; temporal trends are presented in Figure S2.

Treatment	Measured				Estimated			
	Salinity	Temp (°C)	pH _T	A _T ($\mu\text{mol kg}^{-1}$)	TCO ₂ ($\mu\text{mol kg}^{-1}$)	pCO ₂ (μatm)	Ω_{calcite}	$\Omega_{\text{aragonite}}$
Amb pH + Low temp	24.4 \pm 2.3	15.1 \pm 1.3	8.17 \pm 0.10	2101.6 \pm 124.8	1908.8 \pm 113.3	298.8 \pm 76.9	3.9 \pm 1.0	2.4 \pm 0.6
Low pH + Low temp	24.4 \pm 2.4	15.0 \pm 1.3	7.49 \pm 0.09	2139.7 \pm 74.7	2162.2 \pm 85.1	1694.0 \pm 383.1	0.9 \pm 0.2	0.6 \pm 0.1
Amb pH + High temp	24.4 \pm 2.5	19.3 \pm 1.2	8.14 \pm 0.10	2110.6 \pm 82.1	1900.4 \pm 83.9	332.1 \pm 85.2	4.1 \pm 0.9	2.6 \pm 0.6
Low pH + High temp	24.4 \pm 2.6	19.3 \pm 1.2	7.47 \pm 0.10	2127.8 \pm 85.0	2138.0 \pm 84.7	1793.3 \pm 403.6	1.1 \pm 0.3	0.7 \pm 0.2

201 *Behavioral assays*

202 Behavioral assays were conducted in separate, flow-through experimental tanks (same style as the
 203 exposure tanks) under the same abiotic seawater conditions experienced in the exposure period
 204 (i.e., low temperature mussels were tested under low temperature conditions, high temperature
 205 mussels under high temperature, and so on). A total of 10 experimental tanks were used in a given
 206 assay and we were able to conduct two assays per day; all assays took place between 9:00 and
 207 15:00 each day with treatment order randomized. Prior to each assay, mussels were removed from
 208 their exposure tank and each one placed into an individual experimental tank where they were left
 209 for one hour prior to experimentation. The mantle tissue of the mussels was then gently touched
 210 with the round end of a wooden skewer until they closed and the time to visually re-open was
 211 recorded (in seconds) with a stopwatch for each individual. This process was repeated for each
 212 individual over four consecutive trials every 30 mins from the previous re-opening, allowing us to
 213 determine the short-term repeatability in time to open and to compute individual valve closure
 214 coefficients of variation. If an animal did not open within 30 mins, the observations for that
 215 individual ceased, the individual was assigned a value of 1800 secs, and the animal was given an

216 additional 30 mins to re-open before starting the next trial. Data were discarded from the analysis
217 if an animal was not open at the start of a trial, which only occurred for individuals that did not
218 open at all in any trials ($n = 44$ observations from 11 individuals; see Supplementary File 3). In
219 addition, four animals died during the exposure period. Thus, the total number of individuals for
220 behavioral assays was reduced by 15, from 120 to 105 (leaving 50 small and 55 large individuals).
221 We ensured that all behavioral observations were fully blinded by having one person place the
222 mussels in the experimental tanks prior to behavioral observations by a different person; the
223 observer was also blinded to the goals and hypotheses until after the data were collected. We also
224 dichotomously scored each individual trial according to whether or not the mussel opened within
225 30 mins after being startled.

226 Once behavioral assays were concluded, the mussels were once again weighed and measured, and
227 individual changes in shell length and wet weight were calculated as a percentage of the starting
228 length and weight.

229 *Statistical analyses*

230 All statistical analyses were conducted in R version 3.6.3 (R Core Team 2020). Normality was
231 visually assessed with Q-Q plots and histograms, and homoscedasticity was visually assessed
232 using fitted-residual plots; all plots for assumptions, and the decisions made based on them, can
233 be found in Supplementary File 2. Main and interactive effects were considered significant at $\alpha =$
234 0.05. Pairwise comparisons for significant interactive effects or significant independent effects of
235 factors with more than two levels were determine using Tukey HSD post hoc tests with the `glht()`
236 function from the *multcomp* package (Hothorn et al. 2008). Supplementary figures and tables are
237 contained in Supplementary File 1. Annotated R script and all raw data are in Supplementary Files

238 2 and 3, respectively. Original R datafiles used in the analyses are also provided as Supplementary
239 files 4–8. All data in text are reported as mean \pm one standard deviation.

240 Linear models were used to determine if shell length and wet weights differed between size classes
241 both prior to and after the exposure period using the `lm()` function followed by the `anova()` function
242 to determine significance. Wet weights and post-exposure shell lengths were natural log
243 transformed prior to analysis to assume normality (see Supplementary File 2). Generalized linear
244 models (GLMs) were used to test for the fixed effects of initial size (continuous), pH_T (categorical,
245 2 levels), temperature (categorical, 2 levels), and their interactions on % changes in shell length
246 and wet weight; GLMMs were selected because data transformations were unsuccessful at fixing
247 initial violations of normality and homoscedasticity). We initially built generalized linear mixed
248 models with tank as a random variable, but singularity errors suggested that these models were
249 overfitting the data and we therefore chose to drop the random effect. GLMs were constructed
250 using the `glm()` function in the *lmerTest* package (Kuznetsova et al. 2017) using a Gamma
251 distribution (for continuous, right skewed data);. Significant effects were determined using the
252 `Anova()` function in the *car* package.

253 Repeatability (R) of time to open was estimated using generalized linear mixed models (GLMMs)
254 after (Dingemanse and Dochtermann 2013) and interpreted in a Bayesian fashion according to
255 (Bell et al. 2009) (i.e., behavior can be considered ‘significantly’ repeatable at $R \geq 0.37$). Two
256 GLMMs were constructed: one to estimate agreements repeatability (R_{agree} ; repeatability without
257 accounting for any fixed effects) and another to estimate adjusted repeatability (R_{adj} ; repeatability
258 accounting for fixed effects of size class, pH_T, and temperature). The GLMMs were build using
259 the `MCMCglmm()` function in the *MCMCglmm* R package (Hadfield 2010). Estimates and 90%

260 confidence intervals for R_{agree} and R_{adj} were obtained using the `posteriormode()` and `HPDinterval()`
261 functions, respectively, with code adapted from (Roche et al. 2016).

262 Behavioral assays were limited to 30 mins and if an animal did not open its valves in that time it
263 was assigned a value of 1800 secs; some observations were thus censored. To account for this, the
264 effects of size class, pH_T , temperature, trial, and their interactions time to open were tested using
265 time-to-event analysis (or survival analysis). A mixed effect Cox proportional hazard model based
266 on Kaplan Meier estimations was built using the `Surv()` function in the *survival* package (Therneau
267 and Grambsch 2000) and the `coxme()` function in the *coxme* package (Therneau 2020) and the
268 `Anova()` function was subsequently used to test for significant effects (Fox and Weisberg 2019).

269 To test for the fixed effects of size class, pH_T , temperature, trial, and their interactions on individual
270 coefficients of variation (CoV; of time to open), we built linear mixed effects models using the
271 `lmer()` function in the *lmerTest* package. Significant effects were determined using the `anova()`
272 function. Data were natural log transformed prior to analysis to achieve normality and
273 homoscedasticity (see Supplementary File 2). Independent and interactive effects of the same
274 factors on the number of behavioral trials in which individual animals did not open were tested for
275 with logistic regression using the `glm()` function with a binomial distribution family and the
276 `Anova()` function to determine significant effects.

277 **Results**

278 *Shell length and wet weight*

279 Following exposure, shell lengths and wet weights were significantly different between the two
280 size classes, with mean shell lengths of 67.5 ± 5.1 mm, 50.9 ± 4.1 mm, and mean wet weights of

281 40.8 ± 8.9 g and 17.6 ± 4.2 g, in the large and small size classes, respectively (Figure 1a-c; Table
 282 S1). For growth rates (i.e., changes in shell length and wet weight), initial size had a significant
 283 independent effect on growth rate, with smaller animals growing showing larger increases in both
 284 shell length and wet weight than larger individuals (Figure 1d,e). There were no significant effects
 285 of temperature, pH_T, or any interactions on growth rates (Table S2).

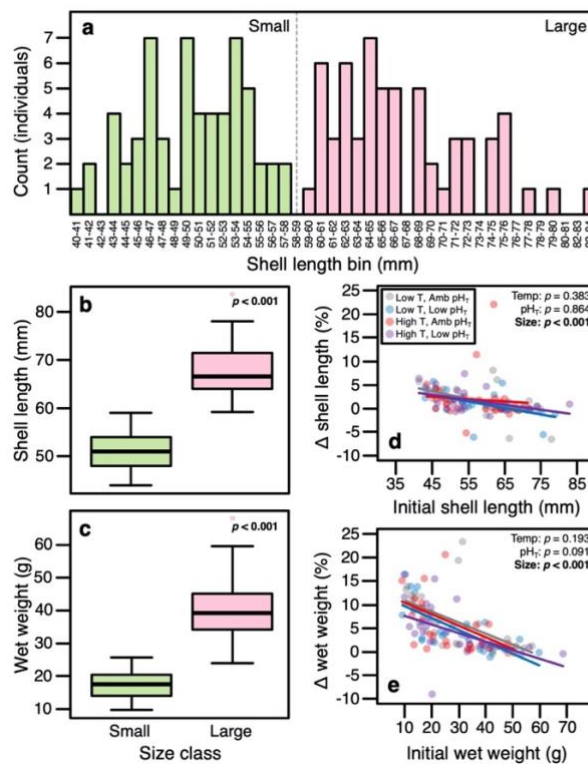


Figure 1. (a) Frequency distribution of shell lengths used to define mussel size classes at the beginning of the experiment. Green bars are the small size class and pink bars are the large size class ($n = 60$ for each size class). (b-c) Boxplots of post-experiment shell length (a) and wet weight (b) for each of the two size classes ($n = 58$ for each size class). (d-e) Scatterplots of changes in (Δ) shell length (d) and wet weight (e) as a function of initial size for each of the four treatments: ambient pH_T + low temperature (gray circles), low pH_T + low temperature (blue circles), ambient pH_T + high temperature (red circles), low pH_T + high temperature (purple circles). P -values represent results of linear models (see Table S1 in Supplementary file 2).

286 *Short-term repeatability in time to open*

287 Time to open was highly repeatable. Agreement repeatability (R_{agree} ; repeatability without
 288 accounting for any fixed effects) was estimated to be 0.64 [0.56–0.77, 95% CI]. Similarly, adjusted

289 repeatability (R_{adj} ; repeatability accounting for fixed effects of size, pH_T , and temperature) was
290 0.56 [0.43–0.63, 95% CI].

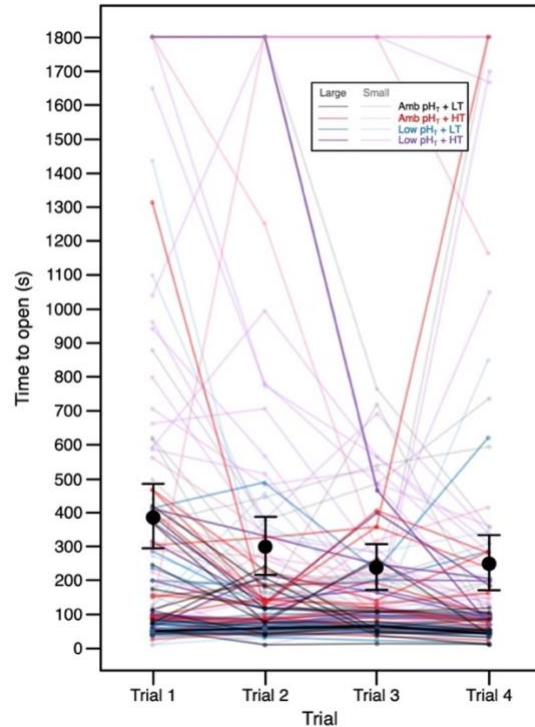


Figure 2. Individual ($n = 105$) time to open across the four trials. Black points and error bars represent the pooled mean \pm 95% CI for time to open time in each trial.

291 *Effects of size, pH_T , temperature, and trial on time to open*

292 Time to open was independently affected by size class, temperature, and trial (Table S4). The small
293 mussels had a time to open that was, on average, $\approx 3\times$ longer than their larger counterparts (453.4
294 ± 449.9 secs for small mussels *versus* 154.1 ± 236.0 secs for large; Figure 3a,c, S3). Likewise,
295 mussels from the high temperature treatment remained closed $\approx 2\times$ longer than those in the low
296 temperature treatment (422.1 ± 535.8 secs for high temperature *versus* 182.6 ± 270.9 secs for low
297 temperature; Figure 3b,c, S3). With respect to trial, time to open decreased linearly across the four
298 trials with the fourth trial being significantly lower than the first trial (Figure 3d, S3; Table S6).

299 Seawater pH_T had no effect on time to open (Amb. pH: 290.2 ± 426.4 secs, Low pH: 302.0 ± 442.6
 300 secs) and there were no interactive effects (Figure S3; Table S4).

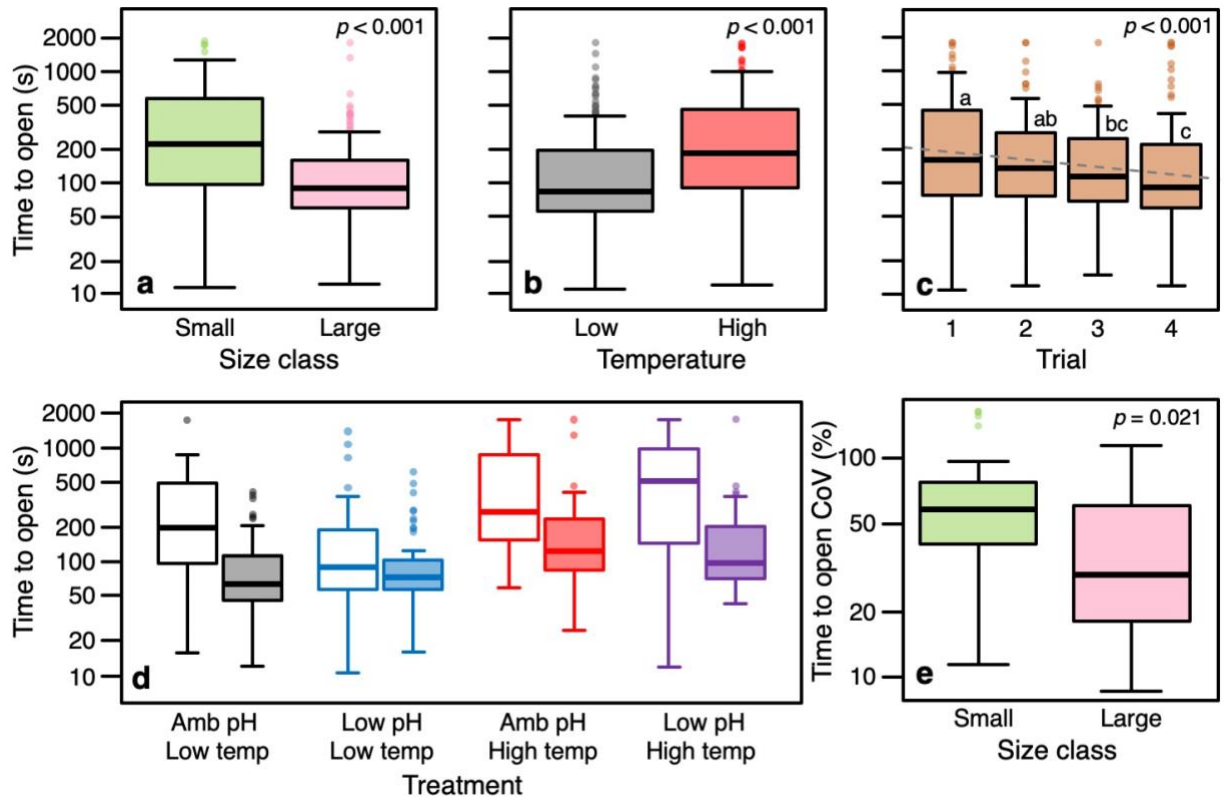


Figure 3. (a) Boxplot of time to open for each size class ($n_{\text{large}} = 55$, $n_{\text{small}} = 50$). (b) Boxplot of time to open for each experimental temperature ($^{\circ}\text{C}$; $n_{\text{control}} = 55$, $n_{\text{high}} = 50$). (c) Boxplot of startle response times for each of the four trials ($n = 105$ individuals per trial). Note that the y-axis is log scaled. Dashed line is the linear best fit trendline. P -value represents the main effect of trial from the linear mixed effects model and letters above plots denote Tukey HSD pairwise differences (see Table S3). (d) Boxplot of time to open as a function of size class and experimental treatment. ($n_{\text{amb pH+low temp, large}} = 14$; $n_{\text{amb pH+low temp, small}} = 15$; $n_{\text{low pH+low temp, large}} = 13$; $n_{\text{low pH+low temp, small}} = 13$; $n_{\text{amb pH+high temp, large}} = 12$; $n_{\text{amb pH+high temp, small}} = 14$; $n_{\text{low pH+high temp, large}} = 9$; $n_{\text{low pH+high temp, small}} = 15$). Small and large size classes are represented by open and filled boxes, respectively. (e) Boxplot of time to open coefficient of variation (CoV) for each size class ($n_{\text{large}} = 55$, $n_{\text{small}} = 50$). Note that all y-axes are log scaled. Sample sizes are number of individuals. P -values represent main effect results from the mixed effect Cox proportional hazards model for time to open (a-c), and linear mixed effects model for CoV (see Tables S2 and S5).

301 Alongside staying closed longer, smaller mussels also had a higher individual coefficient of
 302 variation (CoV) in time to open than larger mussels ($59.9 \pm 37.0\%$ in small *versus* $41.2 \pm 28.6\%$
 303 in large; Figure 3e). Time to open CoV was not significantly affected by any other factor (or
 304 interaction) aside from size class (Table S5).

305 The propensity of individuals to remain closed for the duration of a given trial was independently
306 affect by size class and temperature but not by pH_T or trial (Figure S4; Table S7). The proportion
307 of trials in which individuals did not open was higher in the small size class and under high
308 temperatures (Figure S4). Overall, however, the percentage of trials in which individuals did not
309 open was low (13.1%).

310 **Discussion**

311 This study provides novel insights into the behavioral ecology of a bivalve startle response (time
312 to open) and how this behavior might be impacted under global changes. Results suggest that
313 startle responses in bivalves are repeatable in short-term contexts. In addition, these responses
314 appear to be a function of relative vulnerability to predation and are negatively affected by elevated
315 temperatures but not by reduced pH_T.

316 Contrary to our prediction that increased temperatures would reduce time to open, exposure to
317 elevated temperature resulted in increased time to open and drove a significantly higher proportion
318 of observations where animals did not open during a given trial. Our initial prediction was
319 generated from a physiological perspective with the reasoning that higher temperatures raise
320 metabolic rates, which increase the need for oxygen and nutrient uptake. Similar results are
321 reported for Mediterranean mussels, *Mytilus galloprovincialis*, which increased time to open under
322 higher temperature (Anestis et al. 2007). In addition, continually opening and closing would incur
323 energetic costs for individual mussels. Remaining closed for a longer period of time under the risk
324 of predation at higher temperatures (where metabolic activity, and thus basal energetic
325 expenditure, is higher) could potentially be a strategy to reduce energetic costs if the mussels would
326 have to close again after re-opening. Rather than increasing oxygen and nutrient uptake, it seems

327 that bivalves generally increase the time spent closed, possibly to depress metabolism and offset
328 the energy demand associated with higher temperature (de Zwaan et al. 1980; Ortmann and
329 Grieshaber 2003; Anestis et al. 2007). Such a strategy could help explain reports of reduced growth
330 and condition under higher temperatures (Mackenzie et al. 2014; Clements, Hicks, et al. 2018),
331 observations which have been verified in the field by mussel farmers in eastern Canada (Clements,
332 Hicks, et al. 2018). This strategy appears ineffective for blue mussels, however, as prolonged
333 exposure to higher temperatures is also associated with higher mortality (Clements, Hicks, et al.
334 2018). Given that the amount of time spent at temperatures at or above 20. °C will increase as
335 global temperatures increase, ocean warming may pose a significant threat to these mussels unless
336 they can adapt to increasing temperatures

337 When closed, bivalve feeding activity ceases. As such, longer periods spent closed under higher
338 temperatures have the potential to reduce energy intake if feeding rates (when open) at higher
339 temperatures are insufficient to compensate for the lost time feeding. Kittner and Riisgård (2005)
340 reported that individual blue mussels increase their filtration rates from 5.1 L h⁻¹ at 15.6 °C to 5.5
341 L h⁻¹ at 20.3 °C (on average), with no effect of time up to 22 mins (estimated from Figure 3a at 22
342 mins using ImageJ). Based on 30 min observation periods in our experiment, mussels at 16 °C
343 remained closed, on average, for 182.6 secs (≈3mins, or 6 mins hour⁻¹). In contrast, mussels at 20
344 °C remained closed for an average of 422.1 secs (≈7 mins, or 14 mins hour⁻¹). Based on our data,
345 some back-of-the-envelope calculations reveal that mussels at 16 °C can filter a total of 4.6 L hour⁻¹,
346 while those at 20 °C only filter 4.2 L hour⁻¹ (≈10 % less). Furthermore, differences in baseline
347 opening times at similar temperature reveal a similar trend (Anestis et al. 2007). While studies
348 testing this association more specifically for the mussel population used in this study, and a more
349 precise metric of feeding (e.g. ingestion rate instead of filtration rate), would provide a more

350 definitive answer, these numbers suggest that net food intake in mussels can be reduced under high
351 temperatures. This finding aligns well with reports of reduced glycogen content, increased
352 mortality, and weakened byssal strength under higher temperature in previous studies (Clements,
353 Hicks, et al. 2018).

354 Reduced filtration under higher temperatures not only have implications for individual bivalves
355 and their growth but could potentially impact the ecosystem benefits provided by bivalves
356 (Clements and Comeau 2019b; van der Schatte Olivier et al. 2020). Given that mussels remained
357 closed for durations more than two-times longer than their control temperature counterparts, areas
358 of high predation pressure are likely to see less effective filtering capacity, potentially affecting
359 the effectiveness at which bivalves can clean water and cycle nutrients. Similarly, our results,
360 coupled with others (Anestis et al. 2007), suggest that the filtering capacity of bivalves may
361 decrease in a warmer ocean, which may be amplified in areas where predators exist in high
362 abundance. Given the ubiquitous distribution of marine bivalves and their importance to marine
363 ecosystems globally, it is possible that ocean warming could influence benthic systems worldwide.
364 Furthermore, our results provide a basis for informing spatial planning of shellfish restoration and
365 aquaculture activities globally. More studies of predator encounter rates in the field in conjunction
366 with associated ecosystem service estimates are needed to quantify the effects of temperature and
367 warming on bivalve ecosystem services. Such studies should be accompanied by others
368 quantifying the capacity of various species and populations of bivalves to cope with and/or adapt
369 to shifting temperatures in the context of predator avoidance and feeding.

370 Some of the most striking effects of ocean acidification have been reported on animal behavior
371 (Clements and Hunt 2015) which are anticipated to drive ecosystem-level impacts under global
372 change (Nagelkerken and Munday 2016). Therein, behaviors involving sensory function are

373 thought to be highly sensitive to ocean acidification (Ashur et al. 2017; Draper and Weissburg
374 2019), and anti-predator behaviors in both fish and invertebrates are reported to be impacted by
375 acidification (Clements and Comeau 2019a; Draper and Weissburg 2019). As such, we predicted
376 that exposure to low pH conditions would affect the mussels' time to open in this experiment. In
377 contrast to this prediction, however, we observed no effect of low pH, despite employing an
378 extreme acidification scenario ($-0.7 \text{ pH}\tau$). While clumping behavior in *Mytilus edulis* was affected
379 by acidification (Kong et al. 2019) and median valve openings in *Mytilus galloprovincialis* were
380 reduced under $1200 \mu\text{atm}$ (from a $500 \mu\text{atm}$ control) (Lassoued et al. 2019), multiple studies
381 suggest a lack of acidification effect on baseline valve gaping activity in marine bivalves
382 (Jakubowska and Normant 2015; Bamber and Westerlund 2016; Clements, Comeau, et al. 2018).
383 Furthermore, a recent study also found no effect of near-future ocean acidification (pH 7.70 from
384 a control of 8.25) on startle responses in hermit crabs, *Pagurus criniticornis* (Turra et al. 2019).
385 While it could be argued that the lack of pH effect is due to the cue type used (i.e., tactile *versus*
386 olfactory), a similar study on *Mytilus galloprovincialis* found no effect of low pH on valve closure
387 responses to chemical alarm cues (Clements et al. under review). Collectively, these results suggest
388 that ocean acidification may have a relatively weak effect on marine bivalve behaviors and perhaps
389 a far weaker effect on animal behavior, broadly, than currently thought (Clark et al. 2020).

390 We observed a high degree of behavioral repeatability in time to open following tactile predator
391 cues in the lab, supporting our hypothesis that bivalve startle responses are repeatable. To our
392 knowledge, only one other study has reported on the repeatability of time to open, reporting that
393 similar responses in freshwater mussels, *Margaritifera margaritifera*, were repeatable across three
394 trials with different cue types (although a quantitative estimate of repeatability was not reported)
395 (Wilson et al. 2012). Behavioral aspects of escape performance in scallops are also repeatable on

396 both short- and long-term timescales (Brokordt et al. 2012; Laming et al. 2013) and startle
397 responses in other invertebrates such as sea anemones, hermit crabs, and squid are thought to be
398 repeatable (Sinn et al. 2008; Briffa and Greenaway 2011; Rudin and Briffa 2012; Briffa et al.
399 2013). Our results, together with these other studies, suggest that bivalve startle responses across
400 different species and contexts are repeatable. The high repeatability of time to open, coupled with
401 the ease at which they can be measured, provides for a useful behavioral model, particularly with
402 respect to theoretical questions associated with animal personality (Gosling 2001; Roche et al.
403 2016), behavioral syndromes (Sih et al. 2004), temperament (Réale et al. 2007), and coping styles
404 (Koolhaas et al. 1999). It is important to note, however, that the strength of repeatability decreased
405 over time in our experiment, as the relationships between Trial 1 and the other trials were weaker
406 when trials were further apart. While this appeared to reflect habituation, future studies of
407 repeatability in time to open in theoretical contexts would benefit from using varying stimuli unless
408 habituation is of interest.

409 Our hypothesis that smaller mussels would remain closed longer than larger mussels was supported
410 as smaller mussels remained closed three times longer than the larger mussels. The hypothesis was
411 based on the fact that individuals in the smaller size class are considered more vulnerable to
412 predation than the large size class. This idea is also supported by the observation that freshwater
413 mussels living in clusters had shorter time to open than their solitary counterparts (Wilson et al.
414 2012), since living in clusters is thought to reduce vulnerability to predation in group-living
415 bivalves (Wilson et al. 2012). Valve closures and the cessation of feeding are also reported to be
416 cue specific (Castorani and Hovel 2016; Dzierżyńska-Białończyk et al. 2019). It is thus likely that
417 time to open is at least partly dictated by relative vulnerability to predation and represents a
418 measure of ‘boldness’ in bivalves. It is important to note, however, that feeding, and oxygen

419 uptake, stop when a bivalve is closed. As such, while conferring a lower probability of being
420 consumed by a predator, remaining closed for a longer period of time also means reduced filtering
421 time, which can affect the net growth of individuals (Nakaoka 2000). Extended periods without
422 oxygen uptake slows the metabolism which can also have numerous negative impacts (Ortmann
423 and Grieshaber 2003), including reduced growth and fecundity. Indeed, previous studies have
424 found that blue mussels and other bivalves will incur costs to growth in the interest of protection
425 from predation (Nakaoka 2000; Eschweiler and Christensen 2011).

426 Interestingly, we observed that individual coefficients of variation were significantly higher in the
427 smaller size class, meaning that time to open in the smaller size group were more variable than
428 those in the large size class. This may be due to the relative importance of predator avoidance and
429 feeding in the two size classes. For instance, while both size classes would benefit from
430 maximizing food intake, animals from the large size class were considered less vulnerable to
431 predation and therefore could afford to be consistently bolder (i.e., open faster) and take less risks.
432 In contrast, the smaller size class was considered vulnerable to predation and would therefore stay
433 closed longer. The smaller size class still needs to maximize food intake, however, and they may
434 thus be more likely to take more risks (i.e., sometimes open quickly) than the larger size class,
435 which may explain the higher degree of variability observed in the smaller size class. This
436 explanation thus remains speculative and more research into the mechanism and function of more
437 variable behavior in smaller bivalves is needed.

438 Across the four consecutive trials, time to open linearly decreased as trials progressed. Such an
439 observation may indicate habituation or fatigue. If this observation represents short-term
440 habituation, such a response would likely be adaptive. For example, given the aforementioned
441 trade-offs between feeding and avoiding predation, as contextual adjustments would allow the

442 animals to minimize the risk of being consumed by a predator while maximizing energy
443 acquisition. It is important to note here, however, that we only used a single tactile predator cue in
444 our experiments in the absence of olfactory cues, which comes with limitations as recent evidence
445 suggests that different cues can alter bivalve gaping behavior in different ways (Dzierżyńska-
446 Białończyk et al. 2019). Nonetheless, our approach does not allow us to determine if this response
447 was habituation or simply fatigue. Since adductor muscle contractions required for shell closure
448 would incur energetic costs, the shorter time to open in later trials may simply reflect reduced
449 energy to sustain shell closures. This is particularly apparent given the relatively short rest period
450 between trials. Further research is thus warranted to determine whether or not the trial effect
451 observed here is related to habituation or fatigue.

452 **Conclusions**

453 The results of this study lend novel insights regarding bivalve startle response behavior, suggesting
454 that this behavior is highly repeatable in short-term contexts, and are likely a function of relative
455 vulnerability to predation. Low pH conditions simulating ocean acidification had no effect on
456 bivalve startle responses in this study, adding to the growing body of literature suggesting that the
457 behavioral effects of low pH on marine fauna may be less severe than previously thought. In
458 contrast, however, our results show that these responses can be negatively affected by elevated
459 temperature. Coupled with previous studies reporting similar results, ocean warming could have
460 drastic implications for the important ecosystem services that bivalves provide globally. Future
461 studies directly quantifying the effects of warming on these ecosystem services and bivalve
462 populations worldwide are warranted and highly encouraged.

463 **Acknowledgements**

464 We thank the support staff at the KMRIC for outstanding support throughout the experiment. We
465 also thank Alice D'Hurlaborde and Maria Asplund for assistance in collecting and cleaning
466 mussels. Thanks Dr. Joacim Näslund for statistical advice regarding Cox proportional hazards
467 models. JCC and kr also want to thank our many friends at the KMRIC for taking care of logistical
468 aspects on short notice throughout the experiment: Roland Pfeiffer, Prema Mani, Elena Tamarit
469 Castro, Julian Gallego, Elisabet Ekstrand, Marianna Rampul, Theresa Haller, Samuel Mwaniki
470 Gaita, Sandra Schelzig, Nadine DeSilva, Catherina Maaßen, Ronja Weskott, Nicholas Plum, Ann-
471 Christin Branscheid.

472 **Funding**

473 This work was supported by a Marie Skłodowska-Curie Individual Fellowship funded through the
474 European Union Horizon 2020 program (project number 752813 to J.C.C.); a KVA Fund through
475 the University of Gothenburg (to J.C.C.); an Assemble Plus Grant from the European Marine
476 Biological Resource Centre (EMBRC) (to J.C.C); the Research Council of Norway (262942 to
477 F.J.); and by a Carl Tryggers Fellowship (to K.R.).

478 **Ethics**

479 Ethical approval was not required for the species used in this experiment. Nonetheless, the study
480 was strictly conducted under the premise of the three Rs of animal ethics.

481 **Data Accessibility Statement**

482 All statistical results, raw data, R code, and original datafiles uploaded to R are available as
483 supplementary material.

484 **Author Contributions**

485 JCC conceptualized the idea. JCC, FJ and KR designed the experiment. JCC and KR tended to the
486 animals and collected abiotic seawater parameters. JCC and JN carried out the behavioural
487 experiments. JCC analyzed data and wrote the manuscript. SD and FJ provided in-kind support
488 and technical guidance. All authors revised and approved the manuscript.

489 **Competing interests**

490 We declare we have no competing interests.

491 **Supplementary material**

492 Supplementary file 1. Supplementary figures and tables.

493 Supplementary file 2. Annotated R script.

494 Supplementary file 3. Raw data.

495 Supplementary file 4. R data file: mussel.size.txt

496 Supplementary file 5. R data file: valvo.txt

497 Supplementary file 6. R data file: valvo.repeat.txt

498 Supplementary file 7. R data file: valvo.cov.txt

499 Supplementary file 8. R data file: valvo.logistic.txt

500 **References**

- 501 Allan BJM, Domenici P, Watson S-A, Munday PL, McCormick MI. 2017. Warming has a greater
502 effect than elevated CO₂ on predator–prey interactions in coral reef fish. *Proc R Soc B*.
503 284:20170784. doi:10.1098/rspb.2017.0784.
- 504 Anestis A, Lazou A, Pörtner H-O, Michaelidis B. 2007. Behavioral, metabolic, and molecular
505 stress responses of marine bivalve *Mytilus galloprovincialis* during long-term acclimation at
506 increasing ambient temperature. *Am J Physiol - Reg Integr Comp Physiol*. 293:R911–R921.
507 doi:10.1152/ajpregu.00124.2007.
- 508 Ashur MM, Johnston NK, Dixson DL. 2017. Impacts of ocean acidification on sensory function
509 in marine organisms. *Integr Comp Biol*. 57:63–80. doi:10.1093/icb/ix010.
- 510 Bamber SD, Westerlund S. 2016. Behavioral responses of *Arctica islandica* (Bivalvia: Arctidae)
511 to simulated leakages of carbon dioxide from sub-sea geological storage. *Aquat Toxicol*. 180:295–
512 305. doi:10.1016/j.aquatox.2016.10.009.
- 513 Barbeau MA, Sceibling RE. 1994. Behavioral mechanisms of prey size selection by sea stars
514 (*Asterias vulgaris* Verrill) and crabs (*Cancer irroratus* Say) preying on juvenile sea scallops
515 (*Placopecten magellanicus* (Gmelin)). *J Exp Mar Biol Ecol*. 180:103–136. doi:10.1016/0022-
516 0981(94)90082-5.
- 517 Bell AM, Hankison SJ, Laskowski KL. 2009. The repeatability of behaviour: A meta-analysis.
518 *Anim Behav*. 77:771–783. doi:10.1016/j.anbehav.2008.12.022.
- 519 Bibby R, Cleall-Harding P, Rundle S, Widdicombe S, Spicer J. 2007. Ocean acidification disrupts
520 induced defences in the intertidal gastropod *Littorina littorea*. *Biol Lett*. 3:699–701.
521 doi:10.1098/rsbl.2007.0457.
- 522 Bretagnolle V, Terraube J. 2010. Predator–prey interactions and climate change. In: *Effects of*
523 *Climate Change on Birds*. Oxford University Press. p. 199–220.
- 524 Briffa M, Bridger D, Biro PA. 2013. How does temperature affect behaviour? Multilevel analysis
525 of plasticity, personality and predictability in hermit crabs. *Anim Behav*. 86:47–54.
526 doi:10.1016/j.anbehav.2013.04.009.
- 527 Briffa M, Greenaway J. 2011. High *in situ* repeatability of behaviour indicates animal personality
528 in the beadlet anemone *Actinia equina* (Cnidaria). *PLoS ONE*. 6:e21963.
529 doi:10.1371/journal.pone.0021963.
- 530 Brokordt K, Farías W, Lhorente J-P, Winkler F. 2012. Heritability and genetic correlations of
531 escape behaviours in juvenile scallop *Argopecten purpuratus*. *Anim Behav*. 84:479–484.
532 doi:10.1016/j.anbehav.2012.05.025.
- 533 Carroll JM, Clements JC. 2019. Scaredy-oysters: In situ documentation of an oyster behavioral
534 response to predators. *Southeast Nat*. 18:N21–N26. doi:10.1656/058.018.0303.

535 Casey MM, Chattopadhyay D. 2008. Clumping behavior as a strategy against drilling predation:
536 Implications for the fossil record. *J Exp Mar Biol Ecol.* 367:174–179.
537 doi:10.1016/j.jembe.2008.09.020.

538 Castorani MCN, Hovel KA. 2016. Native predator chemical cues induce anti-predation behaviors
539 in an invasive marine bivalve. *Biol Invasions.* 18:169–181. doi:10.1007/s10530-015-1000-6.

540 Christensen HT, Dolmer P, Petersen JK, Tørring D. 2012. Comparative study of predatory
541 responses in blue mussels (*Mytilus edulis* L.) produced in suspended long line cultures or collected
542 from natural bottom mussel beds. *Helgol Mar Res.* 66:1–9. doi:10.1007/s10152-010-0241-0.

543 Clark TD, Raby GD, Roche DG, Binning SA, Speers-Roesch B, Jutfelt F, Sundin J. 2020. Ocean
544 acidification does not impair the behaviour of coral reef fishes. *Nature.* 577:370–375.
545 doi:10.1038/s41586-019-1903-y.

546 Clements JC, Comeau LA. 2019a. Behavioral defenses of shellfish prey under ocean acidification.
547 *J Shellfish Res.* 38:1–18. doi:10.2983/035.038.0300.

548 Clements JC, Comeau LA. 2019b. Nitrogen removal potential of shellfish aquaculture harvests in
549 eastern Canada: A comparison of culture methods. *Aquacult Rep.* 13:100183.
550 doi:10.1016/j.aqrep.2019.100183.

551 Clements JC, Comeau LA, Carver CE, Mayrand E, Plante S, Mallet AL. 2018. Short-term
552 exposure to elevated $p\text{CO}_2$ does not affect the valve gaping response of adult eastern oysters,
553 *Crassostrea virginica*, to acute heat shock under an *ad libitum* feeding regime. *J Exp Mar Biol*
554 *Ecol.* 506:9–17. doi:10.1016/j.jembe.2018.05.005.

555 Clements JC, Hicks C, Tremblay R, Comeau LA. 2018. Elevated seawater temperature, not $p\text{CO}_2$,
556 negatively affects post-spawning adult mussels (*Mytilus edulis*) under food limitation. *Cons*
557 *Physiol.* 6:cox078. doi:10.1093/conphys/cox078.

558 Clements JC, Hunt HL. 2015. Marine animal behaviour in a high CO_2 ocean. *Mar Ecol Prog Ser.*
559 536:259–279. doi:10.3354/meps11426.

560 Connell JH. 1961. The influence of interspecific competition and other factors on the distribution
561 of the barnacle *Chthamalus stellatus*. *Ecology.* 42:710–723. doi:10.2307/1933500.

562 Côté IM, Jelnikar E. 1999. Predator-induced clumping behaviour in mussels (*Mytilus edulis*
563 Linnaeus). *J Exp Mar Biol Ecol.* 235:201–211. doi:10.1016/S0022-0981(98)00155-5.

564 Dawkins R, Krebs JR. 1979. Arms races between and within species. *Proc R Soc B.* 205:489–511.
565 doi:10.1098/rspb.1979.0081.

566 de Zwaan A, Thompson RJ, Livingstone DR. 1980. Physiological and biochemical aspects of the
567 valve snap and valve closure responses in the giant scallop *Placopecten magellanicus*. *J Comp*
568 *Physiol B.* 137:105–114.

- 569 Dickson AG, Millero FJ. 1987. A comparison of the equilibrium constants for the dissociation of
570 carbonic acid in seawater media. *Deep Sea Res I: Oceanogr Res Pap.* 34:1733–1743.
571 doi:10.1016/0198-0149(87)90021-5.
- 572 Dingemanse NJ, Dochtermann NA. 2013. Quantifying individual variation in behaviour: Mixed-
573 effect modelling approaches. *J Anim Ecol.* 82:39–54. doi:10.1111/1365-2656.12013.
- 574 Dorey N, Lançon P, Thorndyke M, Dupont S. 2013. Assessing physiological tipping point of sea
575 urchin larvae exposed to a broad range of pH. *Glob Change Biol.* 19:3355–3367.
576 doi:10.1111/gcb.12276.
- 577 Draper AM, Weissburg MJ. 2019. Impacts of global warming and elevated CO₂ on sensory
578 behavior in predator-prey interactions: A review and synthesis. *Front Ecol Evol.* 7:72.
579 doi:10.3389/fevo.2019.00072.
- 580 Dzierżyńska-Białończyk A, Jermacz Ł, Zielska J, Kobak J. 2019. What scares a mussel? Changes
581 in valve movement pattern as an immediate response of a byssate bivalve to biotic factors.
582 *Hydrobiologia.* 841:65–77. doi:10.1007/s10750-019-04007-0.
- 583 Eschweiler N, Christensen HT. 2011. Trade-off between increased survival and reduced growth
584 for blue mussels living on Pacific oyster reefs. *Journal of Experimental Marine Biology and*
585 *Ecology.* 403:90–95. doi:10.1016/j.jembe.2011.04.010.
- 586 Flynn AM, Smee DL. 2010. Behavioral plasticity of the soft-shell clam, *Mya arenaria* (L.), in the
587 presence of predators increases survival in the field. *Journal of Experimental Marine Biology and*
588 *Ecology.* 383:32–38. doi:10.1016/j.jembe.2009.10.017.
- 589 Fox J, Weisberg S. 2019. An {R} Companion to Applied Regression. Third Edition. Thousand
590 Oaks CA: Sage.
- 591 Gosling SD. 2001. From mice to men: What can we learn about personality from animal research?
592 *Psychol Bull.* 127:45–86. doi:10.1037/0033-2909.127.1.45.
- 593 Hadfield JD. 2010. MCMC methods for multi-response generalized linear mixed models: The
594 MCMCglmm R package. *J Stat Soft.* 33:1–22. doi:10.18637/jss.v033.i02.
- 595 Harvell CD. 1990. The ecology and evolution of inducible defenses. *Q Rev Biol.* 65:323–340.
596 doi:10.1086/416841.
- 597 Hothorn T, Bretz F, Westfall P. 2008. Simultaneous inference in general parametric models. *Biom*
598 *J.* 50:346–363. doi:10.1002/bimj.200810425.
- 599 Jakubowska M, Normant M. 2015. Metabolic rate and activity of blue mussel *Mytilus edulis*
600 *trossulus* under short-term exposure to carbon dioxide-induced water acidification and oxygen
601 deficiency. *Mar Freshw Behav Physiol.* 48:25–39. doi:10.1080/10236244.2014.986865.
- 602 Kats LB, Dill LM. 1998. The scent of death: Chemosensory assessment of predation risk by prey
603 animals. *Écoscience.* 5:361–394. doi:10.1080/11956860.1998.11682468.

604 Kittner Christina, Riisgård HU. 2005. Effect of temperature on filtration rate in the mussel *Mytilus*
605 *edulis*: no evidence for temperature compensation. Mar Ecol Prog Ser. 305:147–152.
606 doi:10.3354/meps305147.

607 Klompmaker AA, Kelley PH, Chattopadhyay D, Clements JC, Huntley JW, Kowalewski M. 2019.
608 Predation in the marine fossil record: Studies, data, recognition, environmental factors, and
609 behavior. Earth Sci Rev. 194:472–520. doi:10.1016/j.earscirev.2019.02.020.

610 Kobak J, Ryńska A. 2014. Environmental factors affecting behavioural responses of an invasive
611 bivalve to conspecific alarm cues. Anim Behav. 96:177–186. doi:10.1016/j.anbehav.2014.08.014.

612 Kong H, Clements JC, Dupont S, Wang T, Huang X, Shang Y, Huang W, Chen J, Hu M, Wang
613 Y. 2019. Seawater acidification and temperature modulate anti-predator defenses in two co-
614 existing *Mytilus* species. Mar Poll Bull. 145:118–125. doi:10.1016/j.marpolbul.2019.05.040.

615 Koolhaas JM, Korte SM, De Boer SF, Van Der Vegt BJ, Van Reenen CG, Hopster H, De Jong IC,
616 Ruis MAW, Blokhuis HJ. 1999. Coping styles in animals: Current status in behavior and stress-
617 physiology. Neurosci Biobehav Rev. 23:925–935. doi:10.1016/S0149-7634(99)00026-3.

618 Kroeker KJ, Sanford E, Jellison BM, Gaylord B. 2014. Predicting the effects of ocean acidification
619 on predator-prey interactions: A conceptual framework based on coastal molluscs. Biol Bull.
620 226:211–222. doi:10.1086/BBLv226n3p211.

621 Kuznetsova A, Brockhoff PB, Christensen RHB. 2017. lmerTest package: Tests in linear mixed
622 effects models. J Stat Soft. 82:1–26. doi:10.18637/jss.v082.i13.

623 Laming SR, Jenkins SR, McCarthy ID. 2013. Repeatability of escape response performance in the
624 queen scallop, *Aequipecten opercularis*. J Exp Biol. 216:3264–3272. doi:10.1242/jeb.080416.

625 Landes A, Zimmer M. 2012. Acidification and warming affect both a calcifying predator and prey,
626 but not their interaction. Mar Ecol Prog Ser. 450:1–10. doi:10.3354/meps09666.

627 Lassoued J, Babarro JMF, Padín XA, Comeau LA, Bejaoui N, Pérez FF. 2019. Behavioural and
628 eco-physiological responses of the mussel *Mytilus galloprovincialis* to acidification and distinct
629 feeding regimes. Mar Ecol Prog Ser. 626:97–108. doi:10.3354/meps13075.

630 Lima DL, Dill LM. 1990. Behavioral decisions made under the risk of predation: A review and
631 prospectus. Can J Zool. 68:619–640. doi:10.1139/z90-092.

632 Lord JP, Harper EP, Barry JP. 2019. Ocean acidification may alter predator-prey relationships and
633 weaken nonlethal interactions between gastropods and crabs. Mar Ecol Prog Ser. 616:83–94.
634 doi:10.3354/meps12921.

635 Lord JP, Whitlatch RB. 2012. Inducible defenses in the eastern oyster *Crassostrea virginica*
636 Gmelin in response to the presence of the predatory oyster drill *Urosalpinx cinerea* Say in Long
637 Island Sound. Mar Biol. 159:1177–1182. doi:10.1007/s00227-012-1896-7.

638 Mackenzie CL, Ormondroyd GA, Curling SF, Ball RJ, Whiteley NM, Malham SK. 2014. Ocean
639 warming, more than acidification, reduces shell strength in a commercial shellfish species during
640 food limitation. PLoS ONE. 9:e86764. doi:10.1371/journal.pone.0086764.

641 Manríquez PH, Jara ME, Mardones ML, Navarro JM, Torres R, Lardies MA, Vargas CA, Duarte
642 C, Widdicombe S, Salisbury J, et al. 2013. Ocean acidification disrupts prey responses to predator
643 cues but not net prey shell growth in *Concholepas concholepas* (loco). PLoS ONE. 8:e68643.
644 doi:10.1371/journal.pone.0068643.

645 Mehrbach C, Culbertson CH, Hawley JE, Pytkowicz RM. 1973. Measurement of the apparent
646 dissociation constants of carbonic acid in seawater at atmospheric pressure. Limnol Oceanogr.
647 18:897–907. doi:10.4319/lo.1973.18.6.0897.

648 Nagelkerken I, Munday PL. 2016. Animal behaviour shapes the ecological effects of ocean
649 acidification and warming: Moving from individual to community-level responses. Glob Change
650 Biol. 22:974–989. doi:10.1111/gcb.13167.

651 Nakaoka M. 2000. Nonlethal effects of predators on prey populations: Predator-mediated change
652 in bivalve growth. Ecology. 81:1031–1045. doi:10.1890/0012-
653 9658(2000)081[1031:NEOPOP]2.0.CO;2.

654 Nicastro KR, Zardi GI, McQuaid CD. 2007. Behavioural response of invasive *Mytilus*
655 *galloprovincialis* and indigenous *Perna perna* mussels exposed to risk of predation. Mar Ecol
656 Prog Ser. 336:169–175.

657 Ortmann C, Grieshaber MK. 2003. Energy metabolism and valve closure behaviour in the Asian
658 clam *Corbicula fluminea*. Journal of Experimental Biology. 206:4167–4178.
659 doi:10.1242/jeb.00656.

660 Paine RT. 1966. Food web complexity and species diversity. Am Nat. 100:65–75.
661 doi:10.1086/282400.

662 Pierrot D, Lewis E, Wallace DWR. 2009. CO2SYS: MS Excel Program Developed for CO2
663 System Calculations. ORNL/CDIAC-105a. Oak Ridge, Tennessee: Carbon Dioxide Information
664 Analysis Center, Oak Ridge National Laboratory, U.S. Department of Energy. (doi:
665 10.3334/CDIAC/otg.CO2SYS_XLS_CDIAC105a).

666 R Core Team. 2020. R: A language and environment for statistical computing. Vienna, Austria: R
667 Foundation for Statistical Computing. <https://www.R-project.org/>.

668 Réale D, Reader SM, Sol D, McDougall PT, Dingemans NJ. 2007. Integrating animal
669 temperament within ecology and evolution. Biol Rev. 82:291–318. doi:10.1111/j.1469-
670 185X.2007.00010.x.

671 Reimer O, Tedengren M. 1996. Phenotypical Improvement of Morphological Defences in the
672 Mussel *Mytilus edulis* Induced by Exposure to the Predator *Asterias rubens*. Oikos. 75(3):383.
673 doi:10.2307/3545878.

- 674 Robson A, Wilson R, Garcia de Leaniz C. 2007. Mussels flexing their muscles: A new method for
675 quantifying bivalve behaviour. *Mar Biol.* 151:1195–1204. doi:10.1007/s00227-006-0566-z.
- 676 Robson AA, Garcia De Leaniz C, Wilson RP, Halsey LG. 2010. Behavioural adaptations of
677 mussels to varying levels of food availability and predation risk. *J Mollusc Stud.* 76:348–353.
678 doi:10.1093/mollus/eyq025.
- 679 Roche DG, Careau V, Binning SA. 2016. Demystifying animal ‘personality’ (or not): why
680 individual variation matters to experimental biologists. *J Exp Biol.* 219:3832–3843.
681 doi:10.1242/jeb.146712.
- 682 Romero GQ, Gonçalves-Souza T, Kratina P, Marino NAC, Petry WK, Sobral-Souza T, Roslin T.
683 2018. Global predation pressure redistribution under future climate change. *Nature Clim Change.*
684 8:1087–1091. doi:10.1038/s41558-018-0347-y.
- 685 Rudin FS, Briffa M. 2012. Is boldness a resource-holding potential trait? Fighting prowess and
686 changes in startle response in the sea anemone, *Actinia equina*. *Proc R Soc B.* 279:1904–1910.
687 doi:10.1098/rspb.2011.2418.
- 688 Sanford E, Gaylord B, Hettinger A, Lenz EA, Meyer K, Hill TM. 2014. Ocean acidification
689 increases the vulnerability of native oysters to predation by invasive snails. *Proc R Soc B.*
690 281:20132681. doi:10.1098/rspb.2013.2681.
- 691 van der Schatte Olivier A, Jones L, Vay LL, Christie M, Wilson J, Malham SK. 2020. A global
692 review of the ecosystem services provided by bivalve aquaculture. *Rev Aquacult.* 12:3–25.
693 doi:10.1111/raq.12301.
- 694 Scherer AE, Bird CE, McCutcheon MR, Hu X, Smee DL. 2018. Two-tiered defense strategy may
695 compensate for predator avoidance costs of an ecosystem engineer. *Mar Biol.* 165:131.
696 doi:10.1007/s00227-018-3391-2.
- 697 Sih A, Bell A, Johnson JC. 2004. Behavioral syndromes: An ecological and evolutionary
698 overview. *Trends Ecol Evol.* 19:372–378. doi:10.1016/j.tree.2004.04.009.
- 699 Sinn DL, Gosling SD, Moltschaniwskyj NA. 2008. Development of shy/bold behaviour in squid:
700 Context-specific phenotypes associated with developmental plasticity. *Anim Behav.* 75:433–442.
701 doi:10.1016/j.anbehav.2007.05.008.
- 702 Smee DL, Weissburg MJ. 2006. Clamming up: Environmental forces diminish the perceptive
703 ability of bivalve prey. *Ecology.* 87:1587–1598. doi:10.1890/0012-
704 9658(2006)87[1587:CUEFDT]2.0.CO;2.
- 705 Smith LD, Jennings JA. 2000. Induced defensive responses by the bivalve *Mytilus edulis* to
706 predators with different attack modes. *Mar Biol.* 136:461–469. doi:10.1007/s002270050705.
- 707 Sommer U, Meusel B, Stielau C. 1999. An experimental analysis of the importance of body-size
708 in the seastar-mussel predator-prey relationship. *Acta Oecol.* 20:81–86. doi:10.1016/S1146-
709 609X(99)80019-8.

710 Sundin J, Amcoff M, Mateos-González F, Raby GD, Jutfelt F, Clark TD. 2017. Long-term
711 exposure to elevated carbon dioxide does not alter activity levels of a coral reef fish in response to
712 predator chemical cues. *Behav Ecol Sociobiol.* 71:108. doi:10.1007/s00265-017-2337-x.

713 Therneau TM. 2020. *coxme: Mixed effects Cox models.* [accessed 2020 Jun 5].
714 <https://cran.csiro.au/web/packages/coxme/coxme.pdf>.

715 Therneau TM, Grambsch PM. 2000. *Modeling survival data: Extending the Cox model.* New
716 York: Springer-Verlag.

717 Trussell GC, Smith LD. 2000. Induced defenses in response to an invading crab predator: An
718 explanation of historical and geographic phenotypic change. *Proc Natl Acad Sci USA.* 97:2123–
719 2127. doi:10.1073/pnas.040423397.

720 Turra A, Ragagnin MN, McCarthy ID, Fernandez WS. 2019. The effect of ocean acidification on
721 the intertidal hermit crab *Pagurus criniticornis* is not modulated by cheliped amputation and sex.
722 *Mar Environ Res.* 153:104794. doi:10.1016/j.marenvres.2019.104794.

723 Watson S-A, Lefevre S, McCormick MI, Domenici P, Nilsson GE, Munday PL. 2014. Marine
724 mollusc predator-escape behaviour altered by near-future carbon dioxide levels. *Proc R Soc B.*
725 281:20132377. doi:10.1098/rspb.2013.2377.

726 Westerbom M, Kilpi M, Mustonen O. 2002. Blue mussels, *Mytilus edulis*, at the edge of the range:
727 population structure, growth and biomass along a salinity gradient in the north-eastern Baltic Sea.
728 *Mar Biol.* 140:991–999. doi:10.1007/s00227-001-0765-6.

729 Wilson CD, Arnott G, Elwood RW. 2012. Freshwater pearl mussels show plasticity of responses
730 to different predation risks but also show consistent individual differences in responsiveness.
731 *Behav Process.* 89:299–303. doi:10.1016/j.beproc.2011.12.006.

732 Wright JM, Parker LM, O'Connor WA, Scanes E, Ross PM. 2018. Ocean acidification affects
733 both the predator and prey to alter interactions between the oyster *Crassostrea gigas* (Thunberg,
734 1793) and the whelk *Tenguedella marginalba* (Blainville, 1832). *Mar Biol.* 165:46.
735 doi:10.1007/s00227-018-3302-6.

Supplementary figures and tables

Effects of temperature and pH on startle response behaviour in a wide-ranging marine mollusc

Jeff C. Clements¹, Kirti Ramesh², Jacob Nysveen^{2,3}, Sam Dupont², Fredrik Jutfelt¹

¹ Department of Biology, Norwegian University of Science and Technology, Høgskoleringen 5, 7491 Trondheim, Norway

² Department of Biological and Environmental Sciences, University of Gothenburg, Kristineberg Marine Research Centre, Kristineberg 566, 45178 Fiskebäckskil, Sweden

³ Havets Hus, Strandvägen 9, 45330 Lysekil, Sweden

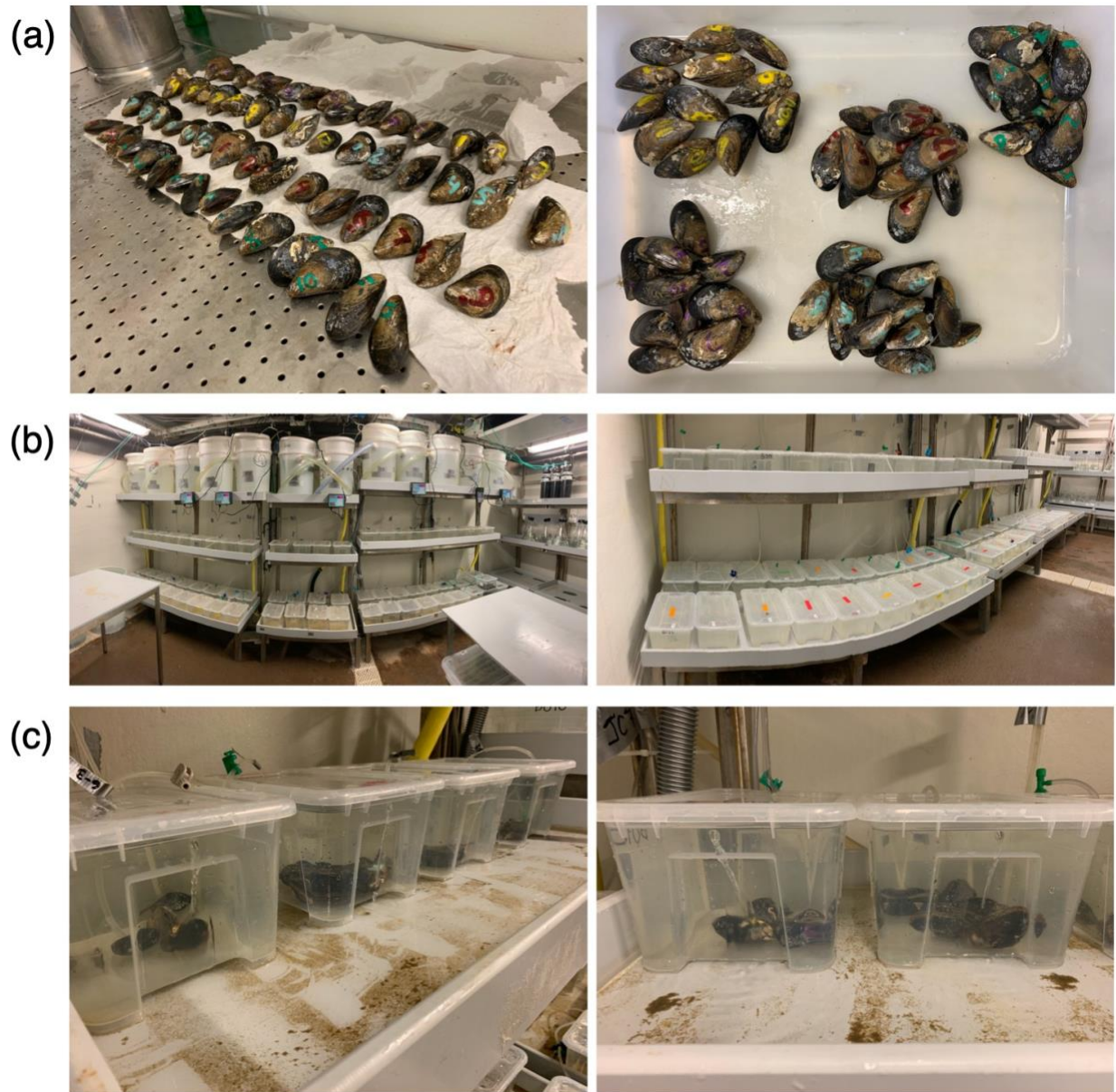


Figure S1. Images of the experimental animals and system. (a) Individual mussels for the large size class. (b) Experimental set-up as viewed before the experiment was initiated. Large buckets on top are the header tanks ($N = 3$ per $\text{pH}_T \times \text{temperature}$ treatment); smaller containers on shelves below the headers (i.e., right panel) are the exposure tanks ($n = 2$ per header, one for the large and one for the small size class; $n = 3$ per size class \times $\text{pH}_T \times \text{temperature}$ treatment). Extra exposure tanks in photo (there are a total of 60 replicate tanks in the photo) were used for a separate experiment (c) Mussels in their exposure tanks ($n = 5$ mussels per exposure tank; $n = 15$ individuals per size class \times $\text{pH}_T \times \text{temperature}$ treatment).

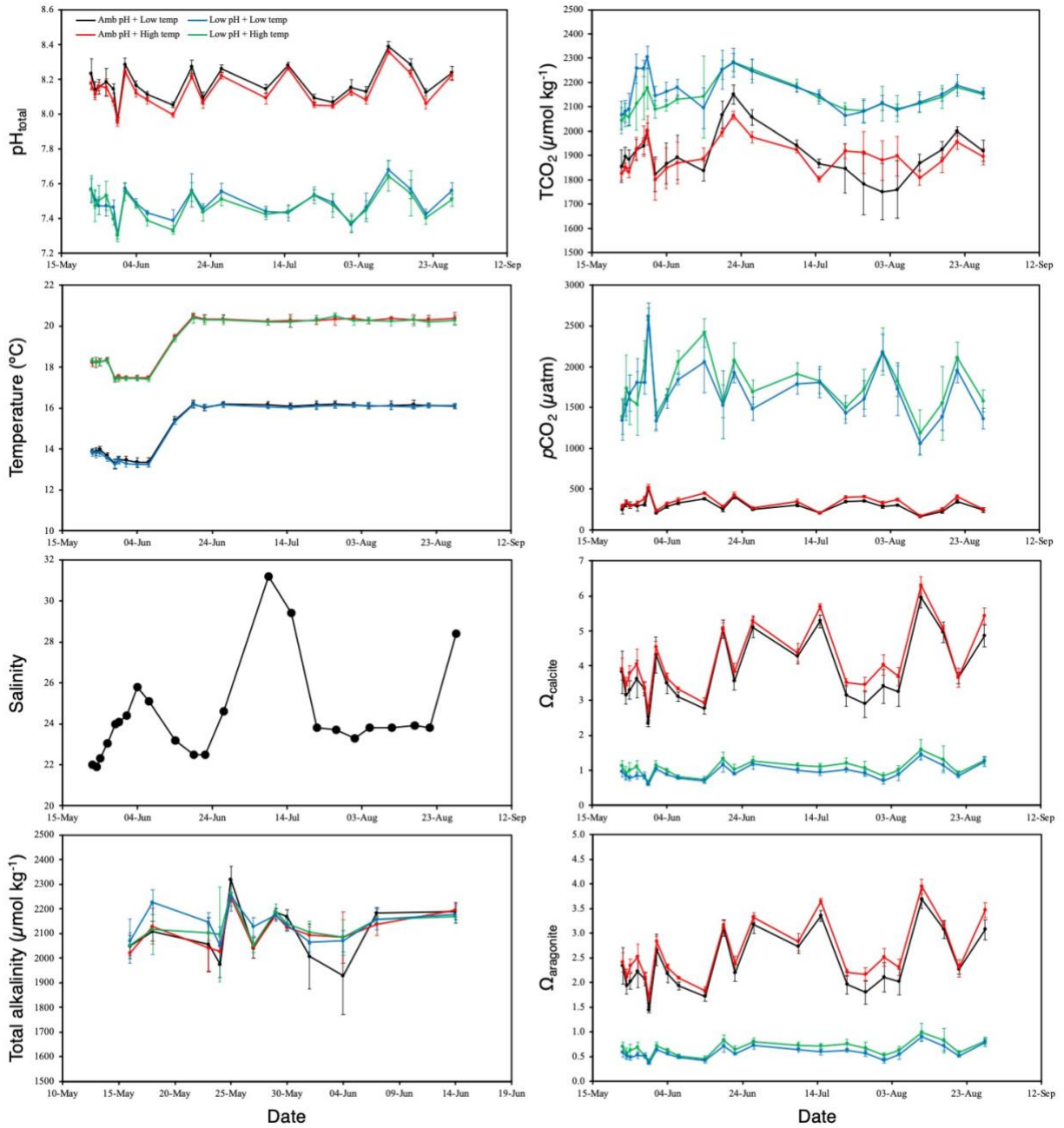


Figure S2. Abiotic seawater parameters in the replicate tanks (i.e., tanks with animals) for each treatment over the course of the experiment. TCO_2 , pCO_2 , and saturation states were estimated in CO2SYS. Raw data can be found in Supplementary file 1 ('Carbonate chemistry' sheet) and full CO2SYS results are in Supplementary file 2.

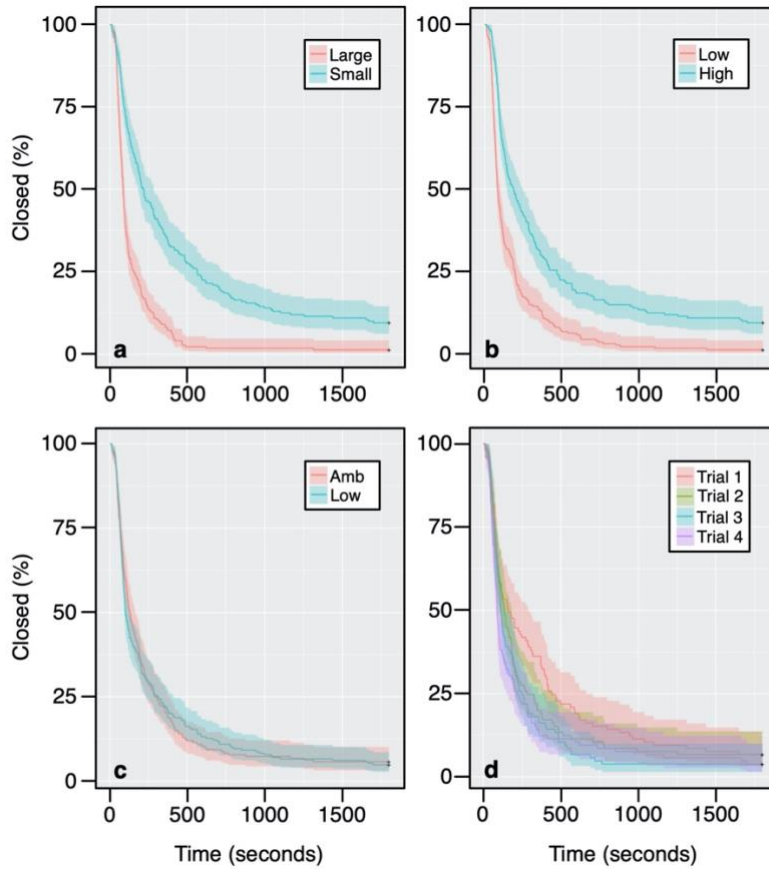


Figure S3. Time-to-event (i.e., time to open) curves for each of the four main factors including size class (**a**), temperature (**b**), pH_T (**c**), and trial (**d**). Curves show the percentage of individuals remaining closed over time based on the Kaplan Meier method; + denote censored observations (i.e., mussels that never opened).

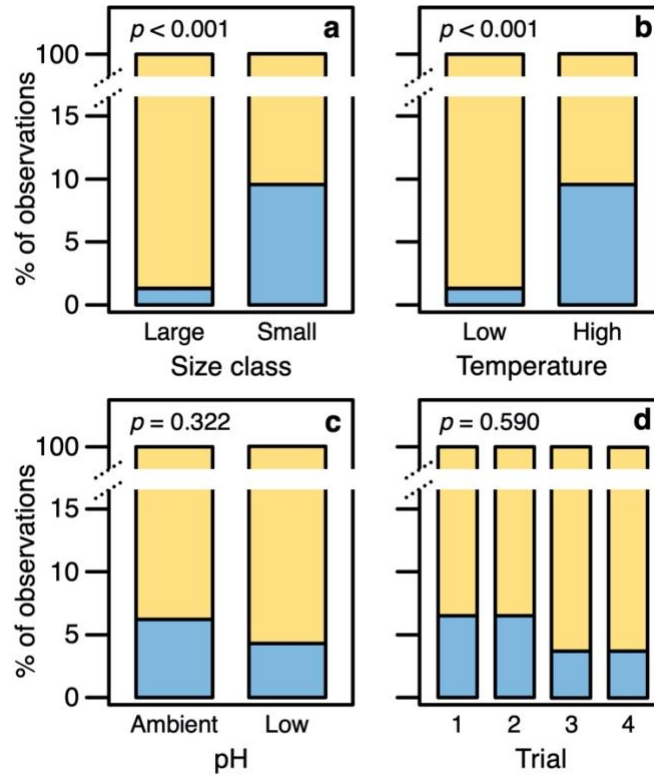


Figure S4. Bar plots for the percentage of observations (trials) in which individuals opened (yellow) or did not open (blue) during a given 30 minute trial for (a) size class ($n_{\text{large}} = 220$; $n_{\text{small}} = 200$); (b) temperature treatment ($n_{\text{control}} = 220$; $n_{\text{high}} = 200$); (c) pH treatment ($n_{\text{control}} = 192$; $n_{\text{high}} = 228$); and (d) trial ($n = 105$ per trial). Sample sizes are number of individuals. P -values represent results of logistic regression analysis (see Table S6).

Table S1. Results of linear model analyses for differences in shell length (mm) and wet weight (g) between the small and large size classes prior to and at the end of the exposure period. Wet weights and post-exposure shell lengths were log transformed prior to analysis (see Supplementary File 2). Bolded text denotes significant effects. df = degrees of freedom, SS = sum of squares, MS = mean of squares, F = Fisher's F statistic, *P* = p-value.

Source of error	df	SS	MS	F-value	<i>P</i>
<i>Pre-exposure</i>					
<i>Shell length</i>					
Size class	1	8619.8	8619.8	364.6	<0.0001
Residuals	114	2694.9	23.6		
<i>Wet weight</i>					
Size class	1	22.9	22.9	352.07	<0.0001
Residuals	114	7.4	0.1		
<i>Post exposure</i>					
<i>Shell length</i>					
Size class	1	2.3	2.3	383.0	<0.0001
Residuals	114	0.7	0.0		
<i>Wet weight</i>					
Size class	1	20.9	20.9	3388.4	<0.0001
Residuals	114	6.1	0.1		

Table S2. Results of generalized linear model analyses for effects of initial size (length or weight), pH_T, and temperature on changes in shell length (mm) and wet weight (g) between the beginning and the end of the exposure period. Bolded text denotes significant effects. χ^2 = chi-squared test statistic, df = degrees of freedom, P = p-value.

Source of error	χ^2	df	P
<i>Shell length</i>			
Initial length	20.12	1	<0.0001
pH _T	0.03	1	0.8637
Temp	0.76	1	0.3829
Initial length×pH _T	0.06	1	0.8004
Initial length×Temp	2.59	1	0.1073
pH _T ×Temp	0.16	1	0.6912
Initial length×pH _T ×Temp	0.57	1	0.4518
<i>Wet weight</i>			
Initial weight	35.90	1	<0.0001
pH _T	2.85	1	0.0913
Temp	1.69	1	0.1933
Initial weight×pH _T	0.03	1	0.8716
Initial weight×Temp	0.15	1	0.6997
pH _T ×Temp	0.23	1	0.8716
Initial weight×pH _T ×Temp	0.34	1	0.5589

Table S3. Results of Cox mixed effects regression analysis for the effects of size class, pH_T, temperature, and trial on startle response time. Bolded text denotes significant effects. df = degrees of freedom, D df = denominator degrees of freedom, χ^2 = Chi-squared statistic, P = p-value.

Source of error	df	χ^2	P
Size class	1	34.56	<0.0001
pH _T	1	1.30	0.2540
Temp	1	20.52	<0.0001
Trial	3	35.37	<0.0001
Size class×pH _T	1	1.55	0.2130
Size class×Temp	1	1.11	0.2917
pH _T ×Temp	1	1.32	0.2512
Size class×Trial	3	3.25	0.3546
pH _T ×Trial	3	3.82	0.2820
Temp×Trial	3	1.42	0.7016
Size class×pH _T ×Temp	1	3.71	0.0540
Size class×pH _T ×Trial	3	4.07	0.2545
Size class×Temp×Trial	3	4.81	0.1865
pH _T ×Temp×Trial	3	2.02	0.5687
Size class×pH _T ×Temp×Trial	3	3,43	0.3302

Table S4. Tukey HSD results for pairwise comparisons of trials for the main effect of trial in Table S2. Estimate = effect size estimate, SE = standard error, z-value = z statistic, P = p-value.

Trial pairing	Estimate	SE	z-value	P
1–2	0.9794	0.4508	2.173	0.1305
1–3	1.4173	0.4218	3.360	0.0045
1–4	2.2380	0.4489	4.986	<0.0001
2–3	0.4378	0.4651	0.941	0.7820
2–4	1.2585	0.4721	2.666	0.0381
3–4	0.8207	0.4239	1.936	0.2122

Table S5. Results of linear mixed effects model analysis for the effects of size class, pH_T, temperature, and trial on startle response time coefficient of variation. Response variable data were log transformed prior to analysis. Bolded text denotes significant effects. SS = sum of squares, MS = mean of squares, N df = numerator degrees of freedom, D df = denominator degrees of freedom, F = Fisher's F statistic, *P* = p-value.

Source of error	SS	MS	N df	D df	F	<i>P</i>
Size class	2.30	2.30	1	15.84	6.54	0.0212
pH _T	0.28	0.28	1	15.84	0.80	0.3859
Temp	0.05	0.05	1	15.84	0.14	0.7155
Size class×pH _T	0.45	0.45	1	15.84	1.29	0.2733
Size class×Temp	0.19	0.19	1	15.84	0.55	0.4692
pH _T ×Temp	0.63	0.63	1	15.84	1.80	0.1991
Size class×pH _T ×Temp	0.10	0.10	1	15.84	0.28	0.6026

Table S6. Results of logistic regression analysis for the effects of size class, pH_T, temperature, and trial on individuals that either opened or closed during a given trial. Bolded text denotes significant effects. χ^2 = chi-squared test statistic, df = degrees of freedom, *P* = p-value.

Source of error	χ^2	df	<i>P</i>
Size class	15.928	1	<0.0001
pH _T	0.981	1	0.3220
Temp	16.578	1	<0.0001
Trial	1.916	3	0.5901
Size class×pH _T	0.720	1	0.3962
Size class×Temp	0.907	1	0.3409
pH _T ×Temp	3.299	1	0.0693
Size class×Trial	2.120	3	0.5479
pH _T ×Trial	1.433	3	0.6978
Temp×Trial	1.900	3	0.5934
Size class×pH _T ×Temp	<0.001	1	>0.9999
Size class×pH _T ×Trial	2.658	3	0.4474
Size class×Temp×Trial	<0.001	3	>0.9999
pH _T ×Temp×Trial	<0.001	3	>0.9999
Size class×pH _T ×Temp×Trial	<0.001	3	>0.9999