

1 **Matters Arising: Response to Crossley et al. 2020**

2
3 **Title**

4 Studies of insect temporal trends must account for the complex sampling histories inherent to
5 many long-term monitoring efforts

6
7 **Response to:**

8 Crossley *et al.* 2020. No net insect abundance and diversity declines across US Long Term
9 Ecological Research sites. *Nature Ecology & Evolution* (2020) doi:10.1038/s41559-020-1269-4.

10
11 **Authors**

12 Ellen A. R. Welti^{1*}, Anthony Joern², Aaron M. Ellison³, David C. Lightfoot⁴, Sydne Record⁵,
13 Nicholas Rodenhouse⁶, Emily H. Stanley⁷, Michael Kaspari⁸

14
15 **Author Affiliations**

16 ¹ Senckenberg Research Institute and Natural History Museum Frankfurt, Gelnhausen, Germany

17 ² Division of Biology, Kansas State University, Manhattan, KS, USA

18 ³ Harvard Forest, Harvard University, Petersham, MA, USA

19 ⁴ Museum of Southwestern Biology, Biology Department, University of New Mexico,
20 Albuquerque, NM, USA

21 ⁵ Department of Biology, Bryn Mawr College, Bryn Mawr, PA, USA

22 ⁶ Biological Sciences, Wellesley College, Wellesley, MA, USA

23 ⁷ Center for Limnology, University of Wisconsin-Madison, Madison, WI, USA

24 ⁸ Geographical Ecology Group, Department of Biology, University of Oklahoma, Norman, OK,
25 USA

26 *corresponding author; email: ellen.welti@senckenberg.de

27

28 **Abstract**

29 In a recently published study, Crossley et al. (2020, *Nature Ecology & Evolution*, “No net insect
30 abundance and diversity declines across US Long Term Ecological Research sites”)¹ examine
31 patterns of change in insect abundance and diversity across US Long-Term Ecological Research
32 (LTER) sites, concluding “a lack of overall increase or decline”. This is notable if true, given
33 mixed conclusions in the literature regarding the nature and ubiquity of insect declines across
34 regions and insect taxonomic groups²⁻⁶. The data analyzed, downloaded from and collected by
35 US LTER sites, represent unique time series of arthropod abundances. These long-term datasets
36 often provide critical insights, capturing both steady changes and responses to sudden
37 unpredictable events. However, a number of the included datasets are not suitable for estimating
38 long-term observational trends because they come from experiments or have methodological
39 inconsistencies. Additionally, long-term ecological datasets are rarely uniform in sampling effort
40 across their full duration as a result of the changing goals and abilities of a research site to collect
41 data⁷. We suggest that Crossley et al.’s results rely upon a key, but flawed, assumption, that
42 sampling was collected “in a consistent way over time within each dataset”. We document
43 problems with data use prior to statistical analyses from eight LTER sites due to datasets not
44 being suitable for long-term trend estimation and not accounting for sampling variation, using
45 the Konza Prairie (KNZ) grasshopper dataset (CGR022) as an example.

46

47 ***Unsuitable datasets to estimate long-term observational trends***

48 Several of the LTER datasets included in Crossley et al. (2020) either document experiments
49 which have confounding treatment effects or they are too variable in sampling methods to allow
50 for comparison of samples across time. Additionally, in one case, Lepidopteran outbreak
51 dynamics with long intervals (10-13 years) at Hubbard Brook limit power to detect meaningful
52 trends without extremely long-term data⁸. Datasets from Cedar Creek include arthropods
53 collected in plots with nitrogen addition, herbivore exclosures, and manipulated plant diversity.
54 All three of the datasets from Harvard Forest included in Crossley et al.’s analysis have large
55 methodological inconsistencies over time and one dataset documents ants collected in a canopy
56 manipulation experiment, including one treatment where trees were girdled to simulate hemlock
57 woolly adelgid (*Adelges tsugae*) infestation of the hemlock trees years prior to the arrival of the
58 invasive insect to the area. One dataset from North Temperate Lakes documents the responses of
59 two crayfish species in a lake where one species was being experimentally removed. With a few
60 exceptions for partial components of these datasets (e.g. control plots in the arce153 Cedar Creek
61 dataset), these data are inappropriate for estimation of long-term observational species trends.

62

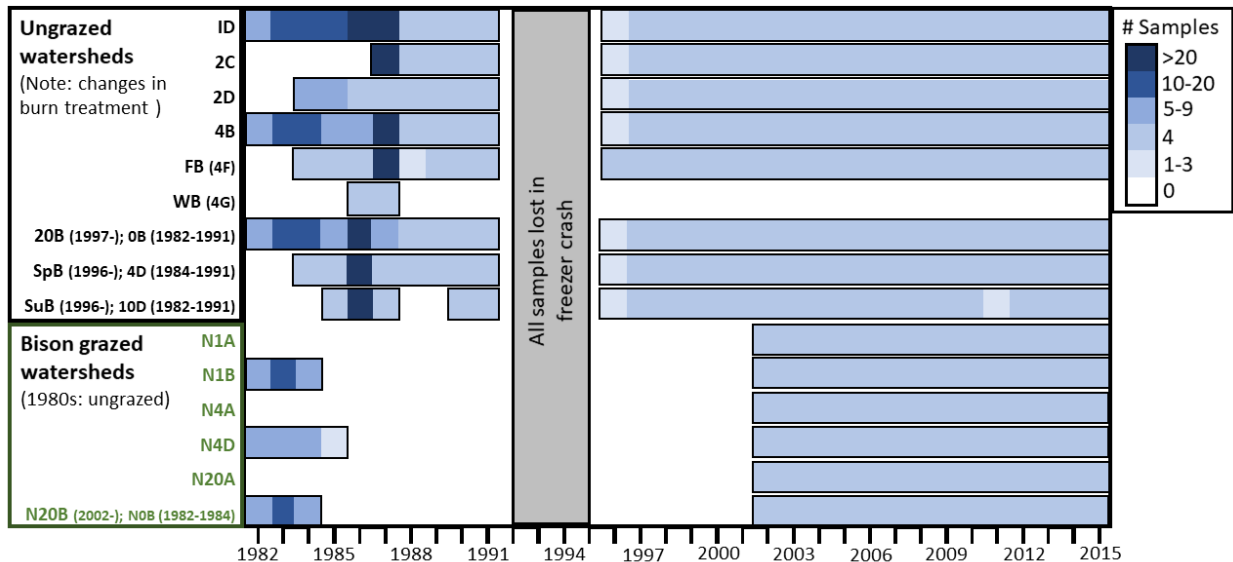
63 ***Not accounting for sampling variation: Konza grasshoppers as a case in point***

64 The KNZ CGR022 dataset documents grasshopper species abundances on 15 KNZ watersheds,
65 and spans 1982-present (up to 2015 included in Crossley et al. 2020). Crossley et al. analyze
66 time series of individual species from each dataset (the number of “Time trends” in their Table
67 1). However, regardless of variant sampling effort, they regularly sum all individuals within
68 LTER datasets to yield a single value of abundance for a given species and year. This is the case
69 for KNZ grasshoppers, and most other included datasets (number of “Sites” in their Table 1).
70 Importantly, sampling effort at KNZ and other LTER sites was not constant. At KNZ, variation
71 occurred in the number of samples per watershed and the number of watersheds in which
72 grasshoppers were collected per year (Fig. 1). Most notably, 6 bison-grazed watersheds were
73 added to KNZ sampling in 2002. Changes in sample numbers over time are documented in the

74 online metadata (<http://lter.konza.ksu.edu/content/cgr02-sweep-sampling-grasshoppers-konza-prairie-lter-watersheds>).

75

76



77

78 **Figure 1. The complex history of sampling of the KNZ grasshopper dataset.** The KNZ

79 grasshopper dataset (CGR022) exhibits high variance both in number of watersheds sampled per

80 year (number of bars per year) and number of samples collected within each watershed each year

81 (depicted in color). Other complexities include the tragic loss of four years (1992-1995) of

82 sampling due to a freezer crash, changes in sampling month, changes in watershed burn

83 frequencies, and the reintroduction of bison in the 1990s to six of the later-sampled watersheds.

84

85 Accounting for sampling effort and data structure matters (*see also* Supplementary Information:

86 Supplementary Fig. 1). At KNZ, bison-grazed watersheds support higher grasshopper

87 abundances and species richness^{9,10}. In a recent analysis using the CGR022 dataset, to account

88 for this change in sampling effort, data were combined only from watersheds collected in the

89 same years (e.g. by splitting samples from grazed watersheds into a separate time series) and

90 abundances within each watershed and year were divided by the number of samples. Analysis of

91 the data structured in this way showed a >2% annual decline in grasshopper abundance, with

92 only one common species increasing¹¹. Crossley et al., in contrast report most grasshopper

93 species increased in abundance from 1982-2015. The authors of Crossley et al. (2020) note the

94 discrepancy with both this study¹¹ and another³, and suggest it is “driven by falling numbers of

95 just two once-dominant species... whereas many other formerly rare species have become more

96 abundant and both evenness and species richness have increased”. However, we believe the

97 discrepancy arises because Crossley et al. did not account for variable sampling effort, including

98 KNZ’s incorporation of additional, more diverse grazed habitats midway in the time series.

99 Similar errors, where data structure was not accounted for, are evident in 17 of the 19 datasets

100 which we examined and were included in Crossley et al. (2020)’s results.

101

102 **Conclusion**

103 We have thus far been able to confirm issues with data from 8 of the 13 LTER sites (comprising

104 60% of Table 1’s “Time trends”) included in Crossley et al. (2020). We note that this is not a

105 comprehensive assessment, as we have only included errors from datasets of which either we

106 ourselves are the PIs or we have been able to confirm with the corresponding LTER PIs and
107 information managers. The eight sites are: Baltimore, Cedar Creek, Central Arizona-Phoenix,
108 Harvard Forest, Hubbard Brook, Konza Prairie, North Temperate Lakes, and Sevilleta. We
109 provide details on dataset unsuitability, mistakes in not accounting for sampling effort, and
110 several coding errors in the Supplementary Information.

111
112 Given these mistakes, we urge skepticism regarding Crossley et al. (2020)'s general conclusion
113 of no net decline in insect abundances at US LTER sites in recent decades. Although their goal is
114 laudable, both the use of unsuitable datasets and not taking sampling effort into account generate
115 erroneous estimates of population change. Recently, a study reporting widespread collapse of
116 rainforest insect populations at the LTER site Luquillo necessitated a similar correction⁵. We
117 echo those authors, when they suggest that scientists can avoid errors by reading corresponding
118 metadata. Contacting in advance (or even including as authors) the data providers/field biologists
119 are additionally good practices that ensure appropriate use of the data. Like the ecology they
120 document, it is important to take into account that long-term monitoring efforts by LTERs and
121 similar institutions are themselves complex and full of history.

122

123 **Author Contributions**

124 E.A.R.W., S. R., A.J., and M.K. conceived the idea for the paper. E.A.R.W. wrote the first draft.
125 A.M.E., D.C.L., S.R., N.R., and E.H.S. identified further errors in the Crossley et al. online data.
126 All authors significantly contributed to revisions.

127

128 **Acknowledgements**

129 Shannon LaDeau, Stevan Earl, Susan Barrott, Elizabeth Borer, and Steve Pennings aided in
130 identifying errors in Crossley et al.'s online data. Karl Roeder provided comments on an early
131 draft of this manuscript. Jeff Taylor aided in identifying changes in Konza watershed names. We
132 thank all LTER information managers and PIs who help keep online metadata updated. We thank
133 Pam Montz, John Haarstad, Amanda Kuhl, Matthew Ayres, Richard Holmes, and the numerous
134 others who did the hard work to generate these long-term datasets. NSF DEB-1556280 to MK
135 and Konza Prairie LTER NSF DEB-1440484 supported this work.

136

137 **Competing Interests**

138 The authors declare no competing interests.

139

140 **Data Availability**

141 KNZ grasshopper abundance data are available from the Long-Term Ecological Research Data
142 Portal (<https://doi.org/10.6073/pasta/7b2259dcb0e499447e0e11dfb562dc2f>). Citations for the
143 additionally described LTER datasets are provided in the Supplementary Information.

144

145 **References**

- 146 1. Crossley, M. S. *et al.* No net insect abundance and diversity declines across US Long Term
147 Ecological Research sites. *Nature Ecology & Evolution* (2020) doi:10.1038/s41559-020-1269-
148 4.
- 149 2. Hallmann, C. A. *et al.* More than 75 percent decline over 27 years in total flying insect
150 biomass in protected areas. *PLoS One* **12**, e0185809 (2017).

- 151 3. van Klink, R. *et al.* Meta-analysis reveals declines in terrestrial but increases in freshwater
152 insect abundances. *Science* **368**, 417–420 (2020).
- 153 4. Lister, B. C. & Garcia, A. Climate-driven declines in arthropod abundance restructure a
154 rainforest food web. *Proc. Natl. Acad. Sci. U. S. A.* **115**, E10397–E10406 (2018).
- 155 5. Willig, M. *et al.* Populations are not declining and food webs are not collapsing at the
156 Luquillo Experimental Forest. *Proceedings of the National Academy of Sciences* **116**, 12143–
157 12144 (2019).
- 158 6. Pilotto, F. *et al.* Meta-analysis of multidecadal biodiversity trends in Europe. *Nature*
159 *Communications* **11**, 3486 (2020).
- 160 7. Didham, R. K. *et al.* Interpreting insect declines: seven challenges and a way forward. *Insect*
161 *Conservation and Diversity* **13**, 103–114 (2020).
- 162 8. Martinat, P. J. & Allen, D. C. Saddled prominent outbreaks in North America. *Northern*
163 *Journal of Applied Forestry* **5**, 88–91 (1988).
- 164 9. Welty, E. A. R. *et al.* Fire, grazing and climate shape plant-grasshopper interactions in a
165 tallgrass prairie. *Funct. Ecol.* **33**, 735–745 (2019).
- 166 10. Bruckerhoff, L. A. *et al.* Harmony on the prairie? Grassland plant and animal community
167 responses to variation in climate across land-use gradients. *Ecology* **101**, e02986 (2020).
- 168 11. Welty, E. A. R., Roeder, K. A., de Beurs, K. M., Joern, A. & Kaspari, M. Nutrient dilution
169 and climate cycles underlie declines in a dominant insect herbivore. *Proc. Natl. Acad. Sci. U.*
170 *S. A.* **117**, 7271–7275 (2020).

171
172

173 **Supplementary Information for Matters Arising:**
174 Studies of insect temporal trends must account for the complex sampling histories inherent to
175 many long-term monitoring efforts
176

177 **Authors:** Ellen A. R. Welte, Anthony Joern, Aaron M. Ellison, David C. Lightfoot, Sydne
178 Record, Nicholas Rodenhouse, Emily H. Stanley, Michael Kaspari
179

180 181 **LTER data use policies and the importance of metadata** 182

183 The National Science Foundation funded Long-Term Ecological Research Network (LTER)
184 network data access and user policies are available at: <https://lternet.edu/data-access-policy/>.
185 While the LTER network strives to make research data publicly available, LTER also urges users
186 of LTER datasets to contact the PIs of datasets with questions about methodology, and
187 encourages data users to collaborate with the data authors. We ask readers to read metadata and
188 communicate (or even collaborate) with the PIs of publically available datasets that you intend to
189 use for publication. Additionally, we acknowledge that data comprehension is a two-way street
190 and urge data providers to include comprehensive, clear, and updated metadata when publishing
191 their data. Following these guidelines improves our ability to conduct good solid science.
192

193 **Description of data use errors in Crossley et al. (2020)¹** 194

195 We have two major concerns regarding data use in Crossley et al. (2020). The first error is the
196 use of datasets or parts of datasets not suitable for addressing the question of how arthropod
197 species are changing over time.
198

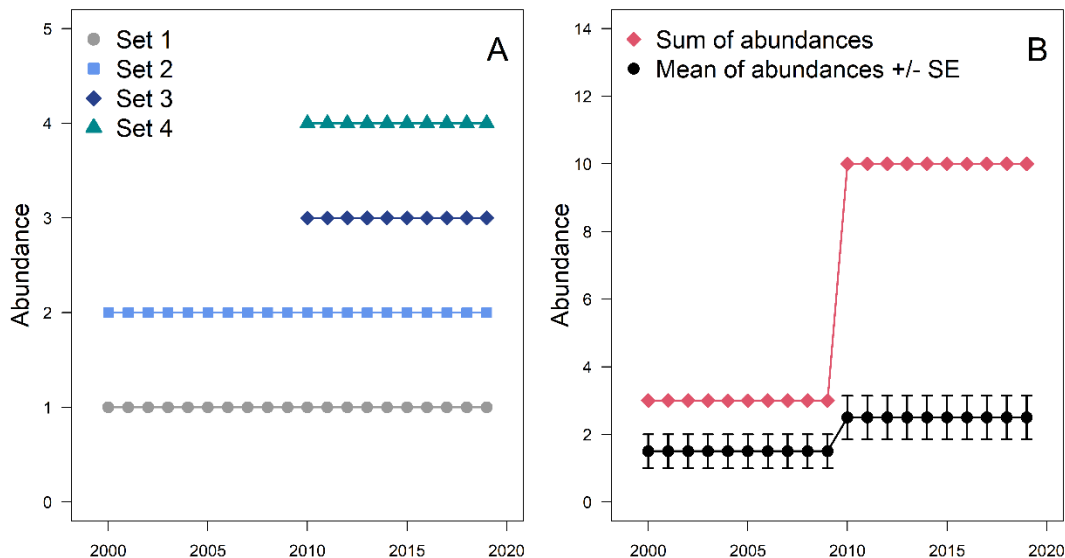
199 The second error we have noted in Crossley et al. (2020) is the use raw annual sums of
200 individuals for entire LTER datasets, which, combined with variation in sampling effort and
201 location, produced unreliable estimates of arthropod temporal trends (Fig S1, summing
202 example). It is evident that Crossley et al. (2020)'s analysis did not account for sampling
203 variation because:

204 **1)** they state that they considered all included datasets to have invariant sampling effort,
205 **2)** complex datasets were considered one time series in their analyses, and
206 **3)** for many datasets sum of all species abundances in their online data
207 (<https://datadryad.org/stash/dataset/doi:10.5061/dryad.cc2fqz645>) equals the total individuals
208 collected within entire LTER datasets suggesting no division by the sample number.
209

210 We note that Crossley et al. did consider quantifying sampling effort as they include a
211 column in their online data to tabulate the number of observations (called "n.obs"). However, the
212 corresponding author of Crossley et al. (2020), Dr. Michael Crossley, informed us that n.obs was
213 never used in their analyses. We further note that even if abundances had been divided by n.obs,
214 this may not appropriately account for changes in sampling effort/location because:

215 **1)** based on Crossley et al. (2020)'s R code, n.obs does not always capture sample observations
216 correctly (e.g. watershed is not included in the calculation of n.obs for the Konza grasshopper
217 dataset and n.obs is incorrectly listed as "1" for all rows of Crossley et al.'s online data for both
218 Central Arizona-Phoenix pitfall datasets, the Cedar Creek grasshopper dataset, the Hubbard

219 Brook White Mountains Region caterpillar dataset, the Sevilleta grasshopper dataset, and the
 220 Sevilleta pitfall dataset), and
 221 2) if changes in sampling location correspond to the gain/loss of subsites/sampling times (e.g.
 222 seasons) that support different species and abundances, and the subsites/ sampling times vary in
 223 years sampled, it is not appropriate to average samples (Fig S1, averaging example).
 224



225 **Supplementary Figure 1. Example of how errors in trend estimation can arise when not**
 226 **accounting for sampling effort and when combining datasets covering different temporal**
 227 **periods.** This example uses four sets of time series which can represent either different subsites,
 228 different sampling times within the year, or different sampling methods. The slope of
 229 abundances over time for all sets = 0; however, abundances vary across sets with the two sets in
 230 which sampling began only in 2010 having higher abundances than the two sets sampled across
 231 the full sampling interval of 2000-2019 (A). Summing does not account for variation in sampling
 232 effort over time (adding more sets) while both summing and averaging do not account for
 233 combining datasets from different temporal periods. ***Both summing and averaging abundances***
 234 ***across the four sets creates bias prior to use of any statistical approach,*** in this example
 235 resulting in artificially positive trends (B). Correct approaches include 1) estimating trends for
 236 each of the four sets separately, 2) combining only sets sampled for the same temporal periods,
 237 or 3) excluding sets so that remaining, analyzed sets cover the same temporal periods (e.g.
 238 excluding sets 3 & 4).
 239

240
 241 We document specific data use errors in Crossley et al. (2020) below. Where the
 242 assumption of invariant sampling error occurred, we provide the raw numbers of individuals
 243 from each dataset to allow others to check our work. We include information only where either
 244 we ourselves are the PIs of these datasets or we have been able to confirm errors with PIs and
 245 information managers from corresponding LTERs. LTER sites are listed in alphabetical order
 246 and include Baltimore (pg. 3), Cedar Creek (pg. 4), Central Arizona-Phoenix (pg. 5), Harvard
 247 Forest (pg. 6), Hubbard Brook (pg. 9), Konza Prairie (pg. 10), North Temperate Lakes (pg. 11),
 248 and Sevilleta (pg. 13).

249 **Baltimore**

250

251 **1) Mosquito dataset (knb-lter-bes.3500.100)²**

252 **<https://doi.org/10.6073/pasta/14f78bf8f3c87f0a56d5e0bbdfd25c6a>**

253

254 **A)** No correction was made for variation in sampling effort (number of sampling weeks)
255 and changes in sampling locations across years. Crossley et al.’s calculation of
256 “n.obs” reflects the number of sampling weeks, but was not used in their analyses. To
257 allow others to check our work, we note that the sum of all individuals in the Crossley
258 et al. (2020) online time series data (32,831 individuals) is higher than the total
259 individuals collected from the entire knb-lter-bes.3500.100 dataset (32,329). This
260 discrepancy is at least in part due to data corrections by the LTER site occurring after
261 the data was downloaded by Crossley et al.; however, the high number of individuals
262 in Crossley’s online data demonstrate no correction for sampling effort.

263 Cedar Creek

264
265
266
267
268
269
270
271
272
273
274
275
276
277
278
279
280
281
282
283
284
285
286
287
288
289
290
291
292
293
294
295
296
297
298
299
300
301
302
303
304
305
306
307

2) Grasshopper dataset (ghe014)³

<https://doi.org/10.6073/pasta/239b3023d75d83e795a15b36fac702e2>

- B)** No correction was made for variation in sampling effort and changes in sampling locations which are documented in the metadata (<https://www.cedarcreek.umn.edu/research/data/methods?e014>; see Table: Supplemental Old Fields Grasshopper Sampling for description of missing months and fields sampled within years). The sum of all individuals in the Crossley et al. (2020) online data time series (52,116 individuals) is the same as the total individuals collected from the entire ghe014 dataset, indicating no correction for sampling effort.
- C)** This dataset is not correctly linked in Supplementary Table 1 and incorrectly described as a nitrogen addition and fire experiment.

3) Arthropod “Sweep1” dataset (arce153)⁴

<https://doi.org/10.6073/pasta/a79b1120729dff992897de58a2c5408>

- A)** This dataset is not appropriate to answer questions about general insect trends, since it is an experiment including nitrogen addition treatments and herbivore exclosures. While analyzing control plots alone would be appropriate, data from all experimental plots was included in Crossley et al. (2020).
- B)** This dataset is not correctly linked in Crossley et al. (2020)’s Supplementary Table 1.

4) Arthropod “Sweep2” dataset (aage120)⁵

<https://doi:10.6073/pasta/4c1795e6769bf78e3c947e92db75eef6>

- A)** No correction was made for variation in sampling effort and changes in sampling locations which are documented in the metadata (<https://www.cedarcreek.umn.edu/research/data/methods?e120>). Samples collected per year vary with sampling month and range from 1-3 samples. The sum of all individuals in the Crossley et al. (2020) online data time series (151,227 individuals) is the same as the total individuals collected from the entire dataset (after subtracting the 44,027 unidentified “undet undet” individuals). While not used in analyses, calculation of “n.obs” in Crossley et al. (2020)’s R code does not include plot number, only month and year of observation.
- B)** This dataset is not appropriate to answer questions about general insect trends, since it is an experiment with treatments having different levels of plant diversity (ranging from 1-16 seeded plant species).
- C)** This dataset is not correctly linked and incorrectly described in Crossley et al. (2020)’s Supplementary Table 1.

308 **Central Arizona-Phoenix**

309

310 **1) Arthropod sweep dataset (knb-lter-cap.652.2)⁶**

311 **<https://doi.org/10.6073/pasta/0669ee6a71b24abb1ae3827f4ee77f6d>**

312

313 No correction was made for variation in sampling locations which are documented in the

314 metadata ([https://data.sustainability.asu.edu/cap-portal/metadataviewer?packageid=knb-](https://data.sustainability.asu.edu/cap-portal/metadataviewer?packageid=knb-lter-cap.652.2)

315 [lter-cap.652.2](https://data.sustainability.asu.edu/cap-portal/metadataviewer?packageid=knb-lter-cap.652.2)). The sum of all individuals in the Crossley et al. (2020) online data time

316 series (34,316) is a similar number to the total individuals (34,323) in the entire dataset.

317 There is 1 individual listed as unidentified but we cannot account for the discrepancy of

318 the 6 remaining individuals. While not used in the analysis, the calculation of “n.obs” in

319 Crossley et al. (2020)’s R code does not include subsite, only sample date.

320

321 **2) Ground arthropod pitfall central Arizona-Phoenix dataset (knb-lter-cap.41.16)⁷**

322 **<https://doi.org/10.6073/pasta/f8aef1bde862f13b48aaf4c3b104dabd>**

323

324 It is likely that no correction was made for variation in sampling effort and changes in

325 sampling locations which are documented in the metadata

326 ([https://data.sustainability.asu.edu/cap-portal/metadataviewer?packageid=knb-lter-](https://data.sustainability.asu.edu/cap-portal/metadataviewer?packageid=knb-lter-cap.41.16)

327 [cap.41.16](https://data.sustainability.asu.edu/cap-portal/metadataviewer?packageid=knb-lter-cap.41.16)). While we cannot account for the discrepancy between the number of

328 individuals in the full pitfall dataset (2,563,183 individuals) and the number in the

329 Crossley et al. (2020) online data time series (2,529,604 individuals, 98% of those in the

330 full dataset), considering the high variability in subsite number and location per year in

331 this dataset we remain concerned that sampling effort and location were not accounted

332 for.

333

334 **3) Ground arthropod pitfall McDowell dataset (knb-lter-cap.643.2)⁸**

335 **<https://doi.org/10.6073/pasta/6ce5de2c3251607d5c939c66d9dccee0>**

336

337 No correction was made for variation in sampling effort and changes in sampling

338 locations which are documented in the metadata ([https://data.sustainability.asu.edu/cap-](https://data.sustainability.asu.edu/cap-portal/metadataviewer?packageid=knb-lter-cap.643.2)

339 [portal/metadataviewer?packageid=knb-lter-cap.643.2](https://data.sustainability.asu.edu/cap-portal/metadataviewer?packageid=knb-lter-cap.643.2)). The sum of all individuals in the

340 Crossley et al. (2020) online data time series (22,360 individuals) is the same as the total

341 individuals collected from the entire dataset from (after subtracting the 1 unidentified

342 “Unknown” individual).

343 **Harvard Forest**

344
345
346
347
348
349
350
351
352
353
354
355
356
357
358
359
360
361
362
363
364
365
366
367
368
369
370
371
372
373
374
375
376
377
378
379
380
381
382
383
384
385
386
387
388

1) Harvard Forest Hemlock Removal Experiment Ant dataset (knb-lter-hfr.118.30)⁹
<https://doi.org/10.6073/pasta/7a6b956fb0960d7fe8bb048b1fe26956>

A) Sampling effort differed among years for the Harvard Forest Hemlock Removal Experiment (HF-HeRE) dataset analyzed by Crossley et al. (2020). These ants were collected within a long-term experiment in which there were four plot types: two controls (intact hemlock and intact mixed hardwood) and two canopy manipulations (hemlocks girdled and logged). While logged canopy manipulation is characteristic of the landscape, the girdled plots simulate the effects of hemlock woolly adelgid (HWA) on trees four years before any HWA was documented in the area.

B) In the Crossley et al. (2020) analysis this dataset is coded with Locales: “ants.pitfall”, “ants.bait”, “ants.hand”, and “ants.litter” that represent pitfall trapping, bait sampling with cookies and tuna fish, hand collections, and sieved litter samples of ants from 2003-2015. Sampling effort differed among years for these different sampling methods coded as “Locales” in the Crossley et al. (2020) analysis. All four sampling methods (i.e., “Locales” equal to “ants.pitfall”, “ants.bait”, “ants.litter”, and “ants.hand” were sampled in June, July, and August from 2003-2005, in July and August in 2006, and in July only from 2007-2008. From 2009-2015, only pitfall traps were set within the HF-HeRE. The number of pitfall traps (sample number) set from 2003-2012 was 25 traps total (situated in a 10 m × 10 m array). In 2012, a deer and moose enclosure was set up within the experimental plots of the HF-HeRE and an additional 10 m × 10 m array of 25 pitfall traps was set up within the enclosure (i.e., pitfall trap sampling effort doubled from 2012-2015 relative to the number of pitfall traps from 2003-2011. We note that Crossley et al. (2020) do account for the different sampling methods and that the baits, litter, and hand samples were only collected from 2003-2008, but other differences in sampling effort were not accounted for. The “n.obs” (number of observations) in Crossley et al. (2020)’s online data is set to one for all rows in the dataset, so it does not account for differences in numbers of samples per year.

C) For the Harvard Forest ant data, Crossley et al. (2020) treat the number of ants collected by pitfall, bait, and litter samples as raw abundances, which may overestimate abundance of ants if they happen to occur nearby colonies with actively foraging workers¹⁰.

2) Nantucket ant dataset (knb-lter-hfr.147.21)¹¹
<https://doi.org/10.6073/pasta/3493424abf9fc36eac7b62b732e4ea55>
(hf147-09-nantucket-sites-2004-09.csv)

This dataset contains ants sampled with pitfall traps in two bogs and surrounding forests in 2000 combined with ants sampled from upland habitats from 2004–2009 by a variety of methods and at different intensities and sites. It also includes “velvet ants”, a group of ant-mimicking wasps, which were identified only to family (Mutillidae). These data were

389 collected to assess relationships of ant diversity with habitat and management regime¹²
390 and cannot be used to analyze temporal trends within a site. No correction was made for
391 this variation in sampling effort and changes in sampling locations, all of which are
392 documented in the metadata
393 (<https://portal.lternet.edu/nis/metadataviewer?packageid=knb-lter-hfr.147.21>). The sum
394 of all individuals in the Crossley et al. (2020) online data time series (32,146 individuals)
395 is the same as the total individuals collected from the entire dataset (after subtracting the
396 9 individuals with year listed as “NA” and 2 individuals with species code listed as
397 “NA”). While not used in analysis, the calculation of n.obs in Crossley et al. (2020)’s R
398 code does not include subsite (“site”) or collection method, only community type (habitat
399 description), month, and year of observation.

400
401 **3) Tick dataset (knb-lter-hfr.299.3)¹³**
402 **[https://doi.10.6073/pasta/ b29a97941c11ddf45540ea30066fde35](https://doi.10.6073/pasta/b29a97941c11ddf45540ea30066fde35)**
403

404 **A)** These data are collected with student time sheets for payroll to raise awareness of tick
405 bites for students in the Harvard Forest Summer Research Program in Ecology. The
406 tick survey is voluntary, has variable response rates each year depending on the group
407 of students, and generally shows a decline in collection intensity during the summer
408 as students increasingly fail to report weekly data. The summer of 2019 also had a
409 much lower response rate because the program switched to using digital, rather than
410 paper, time sheets. While not used in analysis, the calculation of n.obs (for this
411 dataset coded as “n.y1”) in Crossley et al. (2020)’s R code is the sum of hours
412 reported by the tick survey, which is the number of hours worked during the day
413 when the student found a tick on their body. This number does not represent the
414 response rate of the survey, which would need to be accounted for to address
415 differences in samples per year.

416
417 **B)** For the tick data, Crossley et al. (2020) analyze 30 separate time series based on the
418 locations of collection, but it is not clear how those locations were delineated. Many
419 of the “location.names” from this dataset have overlap as they are filled in with text
420 by students in the survey form. For instance, the “location.names” of “Harvard
421 Forest” in the survey overlaps with many possible locations listed by students (e.g.,
422 “greenhouse”, “Prospect Hill”, “Shaler Hall”). Thus, it is not appropriate to analyze
423 these data as separate time series as they refer, in some instances, to the same general
424 location.

425
426 **4) Carnivorous plant prey dataset (knb-lter-hfr.111.16)¹⁴**
427 **<https://doi.org/10.6073/pasta/cb95637eda0f96c3fdba1a97e632c7b7>**
428

429 These data were from a global review of arthropod prey spectra of carnivorous plants¹⁵.
430 None of the data were collected at Harvard Forest (and most were collected on other
431 continents), and for each carnivorous plant species, “year” indicates the year the data
432 were published and no time-series (repeat collection) was observed or implied by the data
433 or discussed in the review. Although these data were not included in the final analysis of
434 Crossley et al. (2020), rows for these data are listed in Crossley et al. (2020)’s online data

435 (<https://datadryad.org/stash/dataset/doi:10.5061/dryad.cc2fqz645>;
436 External_Database_S1_PerSpecies_Abundance_LTER_annotated.csv) and all abundance
437 values are listed as zero. The rows corresponding to this dataset (lines 28497 – 36898:
438 8401 records) were inaccurately included in Crossley et al. (2020)'s count of 82,777
439 observations (the number of rows in their online data:
440 External_Database_S1_PerSpecies_Abundance_LTER_annotated.csv), comprising >10%
441 of the stated number of observations.
442

443 5) We also note more generally that for the Harvard Forest datasets that the environmental
444 data are all for the Harvard Forest site in Petersham in central Massachusetts, but the
445 Nantucket dataset should report different environmental data as it was collected from an
446 island off eastern Massachusetts that has very different climate from central
447 Massachusetts. Furthermore, the locations in the tick dataset, which are each given a
448 different time series should also have location specific environmental data as locations of
449 data collections were variable (e.g., most in western MA at Harvard Forest, but some in
450 Connecticut; Cambridge, MA; etc.).

451 **Hubbard Brook**

452
453
454
455
456
457
458
459
460
461
462
463
464
465
466
467
468
469
470
471
472
473
474
475
476
477
478
479
480
481

1) Lepidoptera datasets (knb-lter-hbr.82.8)¹⁶

<https://doi.org/10.6073/pasta/5d2a8c67c5a3278032b2b14d66c09a7f>

- A)** Sampling effort differed among plots and years for one of the two Hubbard Brook datasets and was not accounted for in the analysis by Crossley et al. (2020). The first dataset was coded as Locale: “Lepidoptera1” and represents visual counts of caterpillars on one plot at Hubbard Brook from 1986-2018, while the second dataset was coded as Locale: “Lepidoptera2”, spans 1986-1995, and represents three different plots in the White Mountains Region that are located outside of the Hubbard Brook valley. Consistent sampling effort occurred throughout the “Lepidoptera1” time series; however, sampling effort for the “Lepidoptera2” dataset differed among years and months within years (ranging from 1 – 10 counts per month). The sum of all individuals in Crossley et al. (2020)’s online data (4,030 individuals) is the same as the total individuals collected from the entire White Mountains Region caterpillar (“Lepidoptera2”) dataset, demonstrating no correction for sampling effort.
- B)** The caterpillar populations documented in these data exhibit outbreaks at long intervals (e.g., 10-13 years apart¹⁷), limiting the ability of trend analysis to detect meaningful trends with time series of shorter lengths (10-33 years for Hubbard Brook data used in Crossley et al. [2020]). A sample of 10 years duration from a population that experiences 10-13 yr pseudo-cycles is likely to provide a misleading indication of long-term trend in abundance¹⁸ and such trend tests will have very low power due to the small sample size and inflated variance^{19,20}.
- C)** The Hubbard Brook datasets are described in Crossley et al. (2020)’s Supplementary Table S1 in a confusing manor that does not make it clear there are two datasets. The “time operational” of 1986-1997 in Table S1 for these datasets does not correspond to either dataset, as the “Lepidoptera 1” dataset spans 1986-2018, while the “Lepidoptera 2” dataset spans 1986-1995.

482 **Konza Prairie**

483
484
485
486
487
488
489
490
491
492
493
494
495
496
497
498
499
500
501
502
503
504
505
506
507
508
509
510
511
512
513
514
515
516
517

1) Grasshopper dataset (CGR022)²¹

<https://doi.org/10.6073/pasta/7b2259dcb0e499447e0e11dfb562dc2f>

A) No correction was made for variation in sampling effort and changes in sampling locations which are documented in the metadata (<http://lter.konza.ksu.edu/content/cgr02-sweep-sampling-grasshoppers-konza-prairie-lter-watersheds>). The sum of all individuals in the Crossley et al. (2020) online data time series (121,229 individuals) is the same as the total individuals collected from the entire CGR022 dataset from 1982-2015 (after subtracting the 459 unidentified “unknown” individual grasshoppers), indicating no correction for invariant sampling. While n.obs was not used in analysis, the calculation of n.obs in Crossley et al. (2020)’s R code does not include watershed, only month, day, and the replicate code within the watershed (“a” or “b”). Standardization to account for variation in sampling effort should be done by dividing by the number of samples (e.g. not by day, as the number of samples varies with day of collection).

B) Three taxa (Tettigoniidae, Oecanthinae, and Gryllidae, the non-Acrididae Orthoptera) included in Crossley et al. (2020)’s analysis for the full duration (1982-2015) were only recorded in the KNZ dataset starting in 2013. Prior to 2013, these taxa occurred in samples, but no record was kept of their counts. Including these taxa which were recorded only at the end years of the time series creates a bias toward a positive community trend.

2) Gall insects (CGP01)²²

<http://dx.doi.org/10.6073/pasta/b2ac9e918a66dbbb18c7a6b39dc1efab>

No correction was made for variation in sampling locations and plant species sampled which are documented in the metadata (<https://portal.edirepository.org/nis/metadataviewer?packageid=knb-lter-knz.27.11>). The sum of all individuals in the Crossley et al. (2020) online data time series (27,819 galled stems) is the same as the total galled stems in the entire CGP01 dataset. While not included in the analysis, the calculation of n.obs (for this dataset coded as “n.y1”) in Crossley et al. (2020)’s R code does not include watershed or account for the different plant species sampled and only accounts for the number of sampled stems.

518 **North Temperate Lakes**

519
520
521
522
523
524
525
526
527
528
529
530
531
532
533
534
535
536
537
538
539
540
541
542
543
544
545
546
547
548
549
550
551
552
553
554
555
556
557
558
559
560
561
562
563

1) Benthic macroinvertebrate dataset (knb-lter-ntl.11.34)²³
<https://doi.org/10.6073/pasta/1bad728523ce4c39ade38fa666a59aee>

A) Likely due to program R being case sensitive, the time series for Sparkling Lake which was coded both “SP” and “sp” was accidentally split into two time series with “sp” having non-zero values only in 2016-2017. However, Crossley et al. (2020) considered Locale “sp” a separate time series spanning 1981-2017. Based on the taxa listed from “sp”, this locale can only pertain to this dataset.

B) No correction was made for variation in sampling effort and changes in sampling locations. While we have not been able to identify why there is a discrepancy between the number of individuals in the Crossley et al. (2020) online data time series (126,041 individuals) and those in the full dataset (140,100 individuals), it is evident that sampling effort changes were not accounted for because the full time series (1981-2017) was included in Crossley et al. (2020)’s analysis, even though some lakes did not have sampling in all years.

2) Pelagic macroinvertebrate dataset (knb-lter-ntl.13.32)²⁴
<https://doi.org/10.6073/pasta/50e2f7b297046aaf01b77b46a011b6da>

A) While listed in Crossley et al. (2020)’s Table 1 and Supplemental Table 1, these data are not included in Crossley et al.’s online data. This dataset documents 5 taxa/ life stages, coded as “BYTHOTREPHESES”, “CHAOBORUS LARVAE”, “CHAOBORUS PUPAE”, “LEPTODORA”, “MYSIS”, none of which occur in Crossley et al.’s online data with the exception of documentation of the genus *Chaoborus*, but coded as “CHAOBORU” and originating from the North Temperate Lakes benthic macroinvertebrate dataset (knb-lter-ntl.11.34).

B) The link provided in Crossley et al. (2020)’s Table S1 links to a summary version of these data (summary version: <https://doi.org/10.6073/pasta/2ebb7f5e89391d3caada53acd8c9a5d7>) rather than the raw data.

3) Crayfish dataset (knb-lter-ntl.3.28)²⁵
<https://doi.org/10.6073/pasta/61619e749daf99c71a289dcadafb795c>

While included in Crossley et al.’s online time series data (“External_Database_S1_PerSpecies_Abundance_LTER_annotated”), all abundance values are listed as zero. No entries from this dataset are listed in Crossley et al.’s online trend data (“External_Database_S2_time_trends_arthropods_relaxed”), thus these data do not appear to be included in Crossley et al. (2020)’s final analysis.

4) Crayfish dataset (knb-lter-ntl.217.9)²⁶
<https://doi.org/10.6073/pasta/4a22c4b3707f68ba5c03cc3ed70e98b6>

564
565
566
567
568
569
570
571
572
573
574
575
576
577
578
579

- A)** This dataset has an incorrect link listed in Crossley et al. (2020)’s Supplementary Table 1. We were able to reconstruct which dataset was used by matching total sums between North Temperate Lakes crayfish datasets and finding identical yearly sums between the Crossley et al. (2020) online data and knb-lter-ntl.217.9 for 2001-2010 (both totaling 95,066 individuals for this duration).
- B)** Crossley et al. (2020) online data for this dataset contains data from 2011, when none exists in the dataset.
- C)** This dataset is not appropriate to answer questions about general arthropod trends, since it contains data on an experiment of crayfish removal. The dataset documents two species of crayfish, one is an invasive species that was removed from the lake in a whole-lake experiment designed overexploit this species. The second species was a native species that likely experienced competitive release from the removal of the invasive species.

580 **Sevilleta**

581

582 **1) Grasshopper dataset (sev-106)²⁷**

583 **<https://doi.org/10.6073/pasta/c1d40e9d0ec610bb74d02741e9d22576>**

584

585 No correction was made for changes in sampling locations (termination of the pinyon-
586 juniper [Goat Draw] vegetation type sampling site, and the initiation of a new [Blue
587 Grama] sampling site at SEV in 2002) which are documented in the metadata
588 ([https://portal.edirepository.org/nis/metadataviewer?packageid=knb-lter-
589 sev.106.152976](https://portal.edirepository.org/nis/metadataviewer?packageid=knb-lter-sev.106.152976)). The sum of all individuals in the Crossley et al. (2020) online data time
590 series (36,634 individuals) is the same number as total individuals in the entire sev-106
591 dataset. The added Blue Grama site had considerably higher numbers of grasshoppers
592 than the old pinyon-juniper site, and this change in sampling location likely inflated the
593 numbers of grasshoppers in Crossley et al. (2020)'s calculation starting in 2002.

594

595 **2) Ground arthropod dataset (sev-29)²⁸**

596 **<https://doi.org/10.6073/pasta/9e7e6dc9c9d8f72e9e0bca07a1e76ccd>**

597

598 No correction was made for changes in sampling locations (termination of the pinyon-
599 juniper [Goat Draw] vegetation type sampling site, and the initiation of a new [Blue
600 Grama] sampling site at SEV in 2002) which are documented in the metadata
601 (<https://portal.edirepository.org/nis/metadataviewer?packageid=knb-lter-sev.29.175390>).
602 Collection of ground arthropods for this dataset also varied in number of traps per
603 collection period/subsite. Some traps in each sample set of 3 subsample traps were often
604 omitted from data tabulation due to individual traps being disturbed by precipitation
605 runoff, or vertebrate animals. Summing omitted subsample traps (missing values, not
606 zeros) would have reduced the sum counts for a line of 3 traps. Crossley et al. (2020)'s
607 online data contains 39,926 individuals while the full sev-29 dataset contains 52,188
608 individuals identified to genus level. Crossley et al. note in their re-analysis that this
609 discrepancy is due to removing the first three sampling years (1992-1994) to account for
610 variation in trap number, and that this is noted in the R code. It would be advisable to
611 note that data was omitted in additional locations besides R code, such as in Table S1.
612 The added Blue Grama site had considerably higher numbers of ground arthropods than
613 the old pinyon-juniper site, and this change in sampling location likely inflated the
614 numbers of ground arthropods in Crossley et al. (2020)'s calculation starting in 2002.

615 **Supplementary Information References**

- 616
- 617 1. Crossley, M. S. *et al.* No net insect abundance and diversity declines across US Long Term
618 Ecological Research sites. *Nature Ecology & Evolution* (2020) doi:10.1038/s41559-020-
619 1269-4.
- 620 2. LaDeau, S. Mosquito ovitrap data from Baltimore city and county (2011-2015). (2018)
621 doi:10.6073/PASTA/14F78BF8F3C87F0A56D5E0BBDFD25C6A.
- 622 3. Knops, J. Core old field grasshopper sampling: Successional dynamics on a resampled
623 chronosequence. (2018) doi:10.6073/PASTA/239B3023D75D83E795A15B36FAC702E2.
- 624 4. Knops, J. Arthropod sweepnet sampling: Interactive effects of deer, fire and nitrogen. (2018)
625 doi:10.6073/PASTA/A79B1120729DFFC992897DE58A2C5408.
- 626 5. Tilman, D. Main plots all arthropod insect sweepnet sampling 1996-2000: Biodiversity II:
627 Effects of plant biodiversity on population and ecosystem processes. (2018)
628 doi:10.6073/PASTA/4C1795E6769BF78E3C947E92DB75EEF6.
- 629 6. Childers, D. *et al.* Ecological survey of central Arizona: a survey of key ecological
630 indicators in the greater Phoenix metropolitan area and surrounding Sonoran desert, ongoing
631 since 1999. (2018) doi:10.6073/PASTA/0669EE6A71B24ABB1AE3827F4EE77F6D.
- 632 7. Grimm, N. & Childers, D. Long-term monitoring of ground-dwelling arthropods in central
633 Arizona-Phoenix, ongoing since 1998. (2020)
634 doi:10.6073/PASTA/F8AEF1BDE862F13B48AAF4C3B104DABD.
- 635 8. Earl, S., Grimm, N. & Childers, D. Long-term monitoring of ground-dwelling arthropods in
636 the McDowell Sonoran Preserve, Scottsdale, Arizona, ongoing since 2012. (2019)
637 doi:10.6073/PASTA/6CE5DE2C3251607D5C939C66D9DCCEE0.
- 638 9. Ellison, A. Ant assemblages in hemlock removal experiment at Harvard Forest since 2003.
639 (2018) doi:10.6073/PASTA/7A6B956FB0960D7FE8BB048B1FE26956.
- 640 10. Gotelli, N. J., Ellison, A. M., Dunn, R. R. & Sanders, N. J. Counting ants (Hymenoptera:
641 Formicidae): biodiversity sampling and statistical analysis for myrmecologists.
642 *Myrmecological News* **15**, 13–19 (2011).
- 643 11. Ellison, A. & Gotelli, N. Ant distribution and abundance in New England since 1990. (2018)
644 doi:10.6073/PASTA/3493424ABF9FC36EAC7B62B732E4EA55.
- 645 12. Ellison, A. M. The ants of Nantucket: Unexpectedly high biodiversity in an anthropogenic
646 landscape. *Northeastern Naturalist* **19**, 43–66 (2012).
- 647 13. Ellison, A. Incidence of ticks and tick bites at Harvard Forest since 2006. (2019)
648 doi:10.6073/PASTA/B29A97941C11DDF45540EA30066FDE35.
- 649 14. Ellison, A. & Gotelli, N. Prey capture by carnivorous plants worldwide 1923-2007. (2018)
650 doi:10.6073/PASTA/CB95637EDA0F96C3FDBD1A97E632C7B7.
- 651 15. Ellison, A. M. & Gotelli, N. J. Energetics and the evolution of carnivorous plants—Darwin’s
652 ‘most wonderful plants in the world’. *J Exp Bot* **60**, 19–42 (2009).

- 653 16. Ayres, M. & Holmes, R. T. Long-term trends in abundance of Lepidoptera larvae at
654 Hubbard Brook Experimental Forest and three additional northern hardwood forest sites,
655 1986-2018. (2020) doi:10.6073/PASTA/5D2A8C67C5A3278032B2B14D66C09A7F.
- 656 17. Martinat, P. J. & Allen, D. C. Saddled prominent outbreaks in North America. *Northern*
657 *Journal of Applied Forestry* **5**, 88–91 (1988).
- 658 18. Fournier, A. M. V., White, E. R. & Heard, S. B. Site-selection bias and apparent population
659 declines in long-term studies. *Conservation Biology* (2019) doi:10.1111/cobi.13371.
- 660 19. White, E. R. Minimum time required to detect population trends: The need for long-term
661 monitoring programs. *BioScience* **69**, 40–46 (2019).
- 662 20. Wauchope, H. S., Amano, T., Sutherland, W. J. & Johnston, A. When can we trust
663 population trends? A method for quantifying the effects of sampling interval and duration.
664 *Methods in Ecology and Evolution* **10**, 2067–2078 (2019).
- 665 21. Joern, A. CGR02 Sweep sampling of grasshoppers on Konza Prairie LTER watersheds.
666 (2020) doi:10.6073/PASTA/7B2259DCB0E499447E0E11DFB562DC2F.
- 667 22. Hartnett, D. CGP01 Gall-insect densities on selected plant species in watersheds with
668 different fire frequencies. (2019)
669 doi:10.6073/PASTA/B2AC9E918A66DBBB18C7A6B39DC1EFAB.
- 670 23. Magnuson, J., Carpenter, S. & Stanley, E. North Temperate Lakes LTER: Benthic
671 macroinvertebrates 1981 - current. (2020)
672 doi:10.6073/PASTA/1BAD728523CE4C39ADE38FA666A59AEE.
- 673 24. Magnuson, J., Carpenter, S. & Stanley, E. North Temperate Lakes LTER: Pelagic
674 macroinvertebrate abundance 1983 - current. (2020)
675 doi:10.6073/PASTA/50E2F7B297046AAF01B77B46A011B6DA.
- 676 25. Magnuson, J., Carpenter, S. & Stanley, E. North Temperate Lakes LTER: Crayfish
677 abundance 1981 - current. (2019)
678 doi:10.6073/PASTA/61619E749DAF99C71A289DCADAFB795C.
- 679 26. Carpenter, S. *et al.* Biocomplexity at North Temperate Lakes LTER; Whole lake
680 manipulations: Exotic crayfish removal 2001 - 2010. (2013)
681 doi:10.6073/PASTA/4A22C4B3707F68BA5C03CC3ED70E98B6.
- 682 27. Lightfoot, D. Long-term core site grasshopper dynamics for the Sevilleta National Wildlife
683 Refuge, New Mexico (1992-2013). (2015)
684 doi:10.6073/PASTA/C1D40E9D0EC610BB74D02741E9D22576.
- 685 28. Lightfoot, D. Ground arthropod community survey in grassland, shrubland, and woodland at
686 the Sevilleta National Wildlife Refuge, New Mexico (1992-2004). (2013)
687 doi:10.6073/PASTA/9E7E6DC9C9D8F72E9E0BCA07A1E76CCD.
- 688