

1 **Temporary behavioral responses to playbacks by a pest parrot and implications for**  
2 **management**

3 **Running Head:** Playback responses in a pest parrot

4  
5 **Authors:** Cesar O. Estien<sup>1,2</sup>, Claire L. O’Connell<sup>2</sup>, Xavier Francis<sup>2</sup>, Grace Smith-Vidaurre<sup>2,3,4</sup>,  
6 Bryan M. Kluever<sup>5</sup>, Elizabeth A. Hobson<sup>2</sup> and Annemarie van der Marel<sup>2</sup>

7  
8 <sup>1</sup> *Department of Environmental Science, Policy, and Management, University of California–*  
9 *Berkeley, Berkeley, CA 94720, USA*

10 <sup>2</sup> *Department of Biological Science, University of Cincinnati, Cincinnati, OH, 45221, USA*

11 <sup>3</sup> *Laboratory of Neurogenetics of Language, Rockefeller University, New York, NY 10065, USA*

12 <sup>4</sup> *Rockefeller University Field Research Center, Millbrook, NY, 12545, USA*

13 <sup>5</sup> *U.S. Department of Agriculture, Animal and Plant Health Inspection Service, Wildlife Services,*  
14 *National Wildlife Research Center, Florida Field Station, 2820 East University Avenue,*  
15 *Gainesville, FL, 32641, USA*

16  
17 **Orcid ID:**

18 Estien: 0000-0001-8410-7371

19 O’Connell: 0000-0002-3852-3021

20 Francis: 0000-0001-7286-3284

21 Smith-Vidaurre: 0000-0002-0155-8159

22 Kluever: 0000-0001-8417-4339

23 Hobson: 0000-0003-1523-6967

24 van der Marel: 0000-0003-3942-8314

25

26 **Correspondence:** Cesar O. Estien, [cesaroestien@gmail.com](mailto:cesaroestien@gmail.com)

27 **Abstract**

28 Human-wildlife interactions continue to increase due to anthropogenic disturbances, with some  
29 interactions resulting in conflict. Leveraging a taxa's bias for a particular sensory cue is a  
30 promising management avenue for reducing the potential and realized negative consequences of  
31 human-wildlife conflict. For instance, many avian species heavily depend on acoustic  
32 communication, and acoustic cues can provide opportunities to reduce conflict with various  
33 avian species. The monk parakeet (*Myiopsitta monachus*) is a gregarious parrot native to South  
34 America that has established populations worldwide and is considered an urban and agricultural  
35 pest in parts of its native and introduced ranges. We conducted playback experiments with a  
36 captive population of monk parakeets to evaluate auditory cues that may be useful for designing  
37 management protocols. Our experiment evaluated the efficacy of two stimuli: predator  
38 vocalizations as potential repulsion and conspecific vocalizations as potential attraction stimuli  
39 for parakeets. We measured two responses: (1) categorical group-level behavioral responses and  
40 (2) time to cease vigilance and return to behavior prior to playback. In the repulsion playbacks,  
41 monk parakeets were repelled by predator vocalizations in 80% of trials and took longer to cease  
42 vigilance and return to baseline behavior compared to attraction playbacks. In the attraction  
43 playbacks, monk parakeets exhibited vigilant behavior and weak or no attraction to the stimulus,  
44 with attraction only being observed in 10% of trials. Our results demonstrate that predator  
45 playbacks may be particularly useful for completing management objectives, such as temporary  
46 removal from a location.

47

48 **Keywords**

- 49 Playback experiments, human-wildlife conflict, behavior, management, avian pests, *Myiopsitta*
- 50 *monachus*

## 51 **Introduction**

52 Anthropogenic disturbances and policies, including changes in human land use, continue to alter  
53 ecosystems worldwide. These disturbances are bringing humans and wildlife into more frequent  
54 and novel forms of contact, leading to changes in wildlife behavior. For example, disturbances  
55 have been found to increase species' nocturnal activity (Gaynor et al., 2018; Wilson et al., 2020)  
56 as well as species mortality and habitat loss (Hill et al., 2020; Hoekstra et al., 2004; Kennedy et  
57 al., 2019). Disturbances can also alter ecological and evolutionary processes in cities, for  
58 instance, by changing landscape heterogeneity that in turn influences resource availability and  
59 biodiversity (Des Roches et al., 2021; Schell et al., 2020). These impacts on various species, and  
60 the associated human-wildlife conflict, have prompted several management strategies to reduce  
61 the negative consequences that may arise from human-wildlife interactions, including indirect  
62 practices such as building fences to exclude wildlife from specific areas as well as direct  
63 approaches such as lethal management (Khorozyan & Waltert, 2019; Wilkinson et al., 2020).  
64 These strategies can potentially resolve the conflict presented (e.g., successfully deterring a  
65 species from entering an area); however, the ecological response and effectiveness of  
66 implemented strategies are important to consider for both direct and lateral impacts, for example,  
67 when constructing fences for the exclusion of particular species (Jones et al., 2018; Wilkinson et  
68 al., 2021). Moreover, evaluating the effectiveness of management strategies is crucial for  
69 adequately preventing and resolving current human-wildlife conflict consequences (Treves et al.,  
70 2006), which may be achieved by integrating an experimental approach (Enck et al., 2006;  
71 Richardson et al., 2020; Walters & Holling, 1990).

72 Recently, researchers have highlighted the benefits of incorporating sensory ecology into  
73 management policies. These benefits can include reducing harm to wildlife and predicting how

74 wildlife will respond to environmental change (Elmer et al., 2021). Management strategies built  
75 around a species' sensory ecology focus on a particularly relevant sense of the target species and  
76 can function as repulsive or attractive signals that cause animals to avoid or gather in areas for  
77 specific management-related activities. For example, olfactory cues like wolf urine can stimulate  
78 avoidance behavior in deer (Chamaillé-Jammes et al., 2014; Osada, Miyazono, &  
79 Kashiwayanagi, 2014), while visual cues, such as changes in lighting or the use of predator  
80 models, can cause target species to alter their foraging strategies and overall activity (e.g., black-  
81 capped chickadees (*Poecile atricapillus*) (Arteaga-Torres, Wijmenga, & Mathot 2020); ship rats  
82 (*Rattus rattus*) (Farnworth et al., 2020)). Moreover, acoustic cues have been used to address  
83 management problems for particularly problematic populations via broadcasting biologically  
84 relevant sounds to influence reproduction (e.g., bark beetles (Coleoptera: Curculionidae)  
85 (Hofstetter et al., 2014)) or using acoustic deterrents, such as underwater speakers, to influence  
86 movement (e.g., fish (Putland & Mensinger, 2019)). More generally, acoustic cues have been  
87 used to investigate behaviors such as territoriality (Frostman & Sherman, 2004; Heinsohn, 1997;  
88 Reif et al., 2015), vocal discrimination (Searcy, Nowicki, & Hughes, 1997; Searcy et al., 2002),  
89 and anti-predator responses (Adams & Kitchen, 2020; Bshary, 2001). With many species attuned  
90 to auditory cues for their ecology (e.g., primates (Ghazanfar & Santos, 2003), birds (Marler &  
91 Slabbekoorn, 2004)), auditory cues provide useful opportunities for nonlethal and widespread  
92 management strategies that may reduce human-wildlife conflict.

93 Natural auditory stimuli, such as vocal signals, are easy to record and broadcast to implement  
94 population-level management strategies. These recorded stimuli can be used for two types of  
95 management goals. First, repulsive signals can deter individuals from an area where they are  
96 unwanted, such as deterring birds from buildings (Boycott et al., 2021) and reducing crop

97 damage on agricultural lands (Mahjoub, Hinders, & Swaddle, 2015; Werrell et al., 2021).  
98 Second, attraction signals can encourage individuals to move to an area where the presence of  
99 those animals is desired, including inciting individuals to visit and remain in specific habitat  
100 patches (Buxton, Ward, & Sperry, 2018; DeJong et al., 2015). With these advances in  
101 implementing biologically relevant auditory cues via playback experiments, auditory cues can  
102 readily be used as a management approach, particularly when designing management strategies  
103 to control avian pests (Berge et al., 2007; Budka et al., 2019; Depino & Areta, 2019; Khan et al.,  
104 2011).

105 The strong foundation of playback experiments provides a robust framework for continuous  
106 assessments of how auditory stimuli may contribute to alleviating human-avian conflict,  
107 particularly in geographically widespread species. A prime example of widespread avian species  
108 that can pose problems for human populations are parrots (Psittaciformes), a species-rich taxon  
109 with global distribution (Calzada Preston & Pruett-Jones, 2021; Davies et al., 2007; Kosman et  
110 al., 2019; Vergara-Tabares et al., 2020) that have become increasingly established in non-native  
111 ranges (Joseph, 2014). As parrot species distributions change with increasing urbanization  
112 (Huang et al., 2019; Liu et al., 2020) and movement via the pet trade (Edelaar et al., 2015;  
113 Martin, 2018; Pires, 2015), parrots are often coming in close contact with humans. Human-parrot  
114 conflict increases as parrots settle in or near human-modified habitats like farms or  
115 suburban/urban greenspaces (de Matos Fragata et al., 2022; Menchetti & Mori, 2014), with  
116 ~44% of parrot species using croplands as habitat (Barbosa et al., 2021). These conditions make  
117 parrots opportune to explore how integrating auditory stimuli can alleviate not only human-  
118 parrot conflict but human-wildlife conflict more generally.

119 The monk parakeet (*Myiopsitta monachus*) has become one of the most widely distributed parrot  
120 species (Calzada Preston & Pruett-Jones, 2021), making them a well-suited species to  
121 experimentally test approaches that may alleviate human-wildlife conflict. Monk parakeets are  
122 gregarious parrots native to South America and have been introduced in over 20 countries in  
123 North America, Europe, Africa, Asia, and at least four Caribbean islands as a byproduct of the  
124 pet trade (Avery et al., 2020; Burgio, Rubega, & Sustaita, 2014; CABI, 2010; Hobson, Smith-  
125 Vidaurre, & Salinas-Melgoza, 2017). Monk parakeets build communal and colonial nests that  
126 range in size, with large multi-chambered nests hosting dozens of pairs (Avery et al., 2002;  
127 Bucher et al., 1990; Eberhard, 1998;). Conflict between humans and monk parakeets typically  
128 manifests in three ways: (1) economic and safety hazards in urban areas, (2) agricultural impacts,  
129 and (3) human health concerns. Following their establishment of new populations, monk  
130 parakeets have established nests throughout the urban sprawl on artificial structures as varied as  
131 power poles, electricity substations, silos, and fire escapes (Avery & Lindsay, 2016), introducing  
132 economic costs and safety concerns for humans (Avery et al., 2002; Stafford, 2003). In addition  
133 to their role as an urban pest, monk parakeets' propensity to inhabit changing landscapes and  
134 consume a wide variety of food resources (Bucher & Aramburú, 2014; Postigo et al., 2021) has  
135 also led them to become agricultural pests in parts of their native and introduced ranges (Davis,  
136 1974; MacGregor-Fors et al., 2011; Mott, 1973; Senar et al., 2016; Stafford, 2003). For instance,  
137 damage in Barcelona ranges from 0.4% to 37% crop loss, depending on the particular crop  
138 (Senar et al., 2016). Lastly, recent research indicates that monk parakeets may serve as a  
139 reservoir for zoonotic diseases in some areas (Morinha et al., 2020), introducing a concern for  
140 human health; however, this is not widely observed (Ortiz-Catedral et al., 2022). As a result of  
141 these concerns and conflicts, monk parakeets have become a management priority in many areas.



142 Thus, ecologically informed techniques for managing these parrot populations are essential to  
143 mitigate conflict among human and monk parakeet populations.

144 Here, we explore group-level behavioral responses of a captive population of monk parakeets to  
145 biologically relevant auditory stimuli and discuss our findings within a wildlife management  
146 context. We evaluated two auditory cues that we expected to serve as either repulsion (predator  
147 vocalizations) or attractive (conspecific vocalizations) stimuli, as well as control stimuli  
148 (vocalizations from a common bird we expected to serve as neither repulsive nor attractive). We  
149 hypothesized that (1) predator playbacks would result in the repulsion of the captive group away  
150 from the auditory source in accordance with the literature on prey responses to predator stimuli  
151 (Hettena, Munoz, & Blumstein, 2014; Lönnstedt et al., 2012; Smith et al., 2017) and (2)  
152 conspecific playbacks would result in the attraction of the captive group towards the auditory  
153 source, in line with previous work that used conspecific vocalizations to attract individuals of a  
154 focal species and to attract focal species to specific patches (Ahlering et al., 2010; Lewis,  
155 Williams, & Gilman, 2021). We then discuss how our results could help inform different  
156 management strategies and goals for avian pest species.

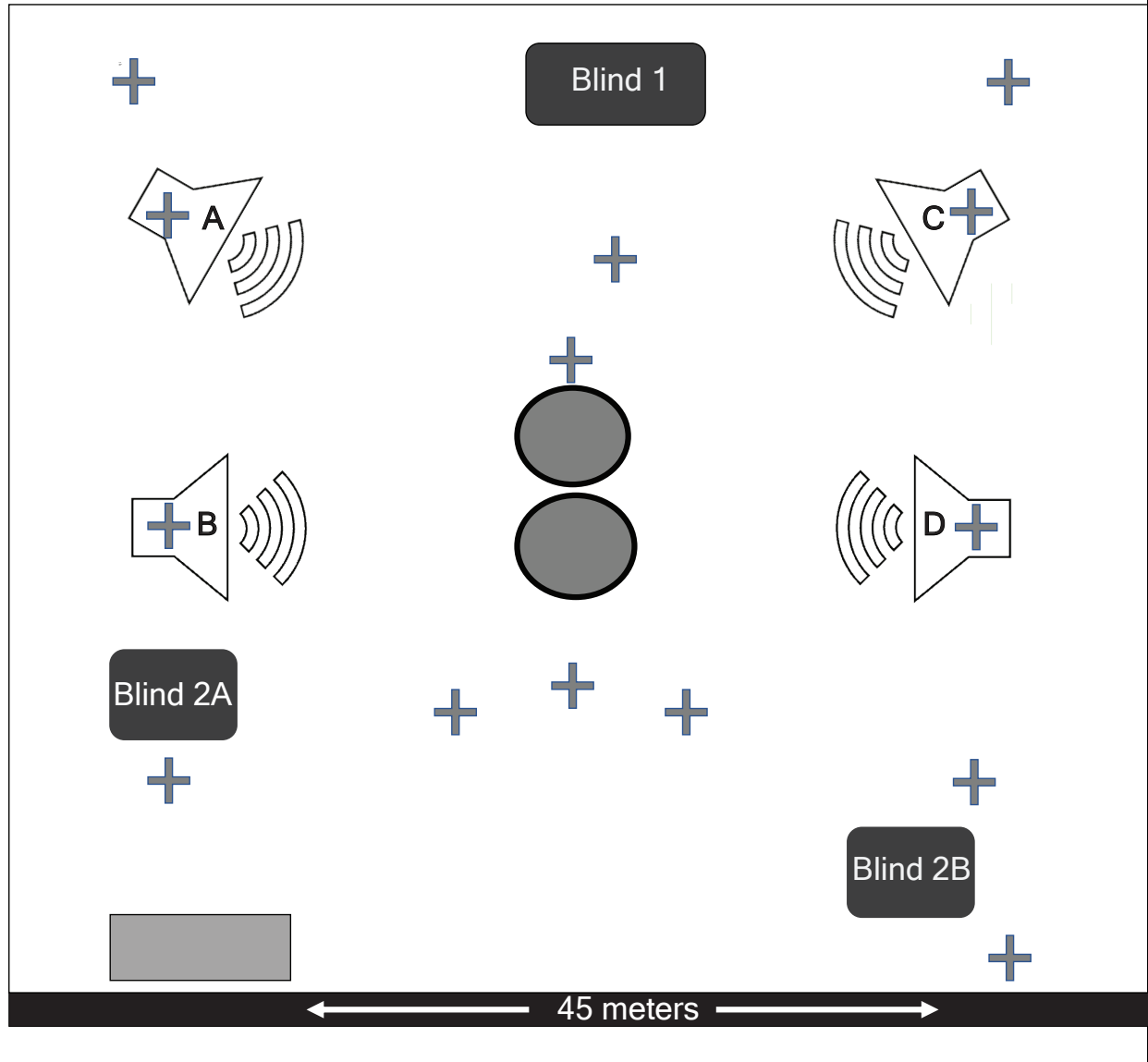
## 157 **Methods**

### 158 *Study Species and Location*

159 We conducted this study on a captive population of monk parakeets ( $n = 20$ ) in Gainesville,  
160 Florida at the USDA Wildlife Services National Wildlife Research Center Florida Field Station  
161 from April to July 2021. This population of monk parakeets was captured just prior to our study  
162 period (January – March 2021) by the USDA National Wildlife Research Center from feral  
163 populations throughout Southern Florida. This population was held in a large 2,025 m<sup>2</sup> outdoor

164 semi-natural flight pen (Figure 1). Using newly caught feral monk parakeets in a semi-natural  
165 flight pen allows us to (1) observe behavioral responses that would likely occur in natural  
166 settings where these playbacks would be used as this population was only in captivity for a  
167 month prior to our experiment and (2) maintain constant group size to consistently measure  
168 behavioral responses in our captive population. All experiments were approved by the University  
169 of Cincinnati (IACUC protocol #AM02-19-11-19-01) and the National Wildlife Research Center  
170 (Quality Assurance protocol #3203).

**Figure 1.** Overview of the flight pen at the USDA Wildlife Services National Wildlife Research Center Florida Field Station. Positions for speakers during playback trials are shown as outlined speakers with locations A, B, C, and D. Crosses and boxes represent perch areas throughout the flight pen, and circles represent trees. Blinds are locations where observers are located during playback sessions.



172 ***Playback Stimuli***

173 We used three playback stimuli to conduct our experiments: a predator call to test for repulsion,  
174 a conspecific call to test for attraction, and a control to ensure that attraction and repulsion  
175 patterns were not due to our playback setup or speaker (see the following paragraphs for details  
176 on playback file creation). For our predator playback, we used vocalizations from a local  
177 predator, the red-tailed hawk (*Buteo jamaicensis*). For our conspecific playback, we used  
178 vocalizations from monk parakeets that were strangers to the captive group. For our control  
179 playback, we used vocalizations from a local bird species, the mourning dove (*Zenaida*  
180 *macroura*). We maintained a consistent volume for the playback stimuli across all trials. We  
181 created all playback tracks in Raven Lite version 2.0.1 (Bioacoustics Research Program 2014,  
182 Cornell Lab of Ornithology) and used randomization in RStudio version 4.1.0 (R Core Team,  
183 2021) to choose the variant of each playback track used in each trial.

184 Both red-tailed hawk and mourning dove vocalizations were selected for their biological  
185 relevance as predatory and non-predatory species, respectively, and their common occurrence in  
186 Florida. Neither of these species was abundant around the flight pen, which lessened the chance  
187 of attracting local birds when playing conspecific calls and confounding parakeets' responses to  
188 our experimental stimuli. Despite the low abundance of both species near our experimental  
189 setup, we expected that the newly caught group of monk parakeets would reliably respond to the  
190 respective calls, since these species are both abundant where the feral parakeets were captured  
191 from wild populations in Southern Florida. We downloaded screech calls of adult red-tailed  
192 hawks and perched songs of adult mourning doves from xeno-canto, a non-profit website that  
193 stores recordings of bird vocalizations uploaded by recordists worldwide (Planqué & Vellinga,  
194 2008; Vellinga & Planqué, 2015). We chose recordings that did not contain any background

195 vocalizations of conspecifics or heterospecifics. We chose three unique files per species and  
196 selected the first 30 seconds of each file to create a playback track. This method resulted in three  
197 unique tracks (exemplars) per stimuli. Predator playback tracks contained four to ten  
198 vocalizations per track, and control playback tracks contained three vocalizations per file  
199 (exemplars). We did not edit the number of vocalizations after selecting the first 30 seconds of  
200 each file as we wanted to accurately replicate vocalizations evoked in natural settings. In each  
201 repulsion and control trial, we randomly selected one of the three exemplars to broadcast to the  
202 captive parakeets.

203 For conspecific vocalizations, we randomly selected non-native ( $n = 3$ ) and native ( $n = 3$ ) range  
204 monk parakeet contact calls collected in previous studies (Smith-Vidaurre, Araya-Salas, &  
205 Wright, 2020; Smith-Vidaurre, Perez-Marrufo, & Wright, 2021). We used contact calls as our  
206 stimuli because parrots often use these vocalizations to maintain auditory contact within pairs  
207 and flocks (Bradbury & Balsby, 2016). We included non-native calls in addition to native calls to  
208 reduce the chances of novelty responses, as non-native calls should be less novel to birds from a  
209 non-native population. In addition, when selecting non-native range calls, we controlled for  
210 biases in behavioral responses to familiar birds by selecting monk parakeet contact calls recorded  
211 outside of Florida, but still within the United States of America, which allowed us to present  
212 calls of individuals that were likely unfamiliar to the captive birds. We created three unique  
213 playback tracks (exemplars) for each native and non-native range call. Each track represents a  
214 unique individual. For each playback track, we randomly selected one call and repeated the  
215 selected call ten times, separated by three-second gaps to simulate natural calling behavior  
216 (Hobson et al., 2015). Each conspecific playback was 30 seconds long and contained nine

217 replicates of each exemplar. In each conspecific trial, we randomly selected one of these  
218 playback tracks to broadcast to the captive parakeets.

219 All playback tracks contain vocalizations from unique individuals. The predator/control playback  
220 tracks are similar in duration to the conspecific playback tracks. The difference between the  
221 predator/control tracks and the conspecific tracks is that we used different vocalizations for the  
222 predator/control tracks but repeated one vocalization for the conspecific tracks (Figure S1).

### 223 *Experiment and Setup*

224 We conducted playback sessions between 09:00 and 18:00 using a wireless speaker (JBL Charge  
225 4 Wireless speaker). We randomized the speaker's placement to four locations within the flight  
226 pen to reduce the probability of habituation to playback stimuli (Figure 1). We also randomized  
227 the order of playback stimuli (predator, conspecific, and control) and the track used per trial to  
228 reduce the chances of habituation. Each playback trial was separated by a minimum of five hours  
229 to reduce the chance of habituation (we conducted most trials with about 48 hours between  
230 playback sessions).

231 Before playback sessions, observers verified that red-tail hawks and mourning doves were not  
232 present in the vicinity of the flight pen. To maximize the chances that the parakeets heard the  
233 selected playbacks, we did not begin a playback session until we observed low levels of parakeet  
234 activity in the flight pen (e.g., low call rates, individuals perching in trees behaving non-  
235 agonistically). When activity was low, we set up the speaker in the pre-designated, randomized  
236 location. After setting up the speaker, the observer returned to their respective blind, and we  
237 waited at least fifteen minutes to begin playback sessions. If birds did not return to baseline  
238 behavior, we waited longer until birds returned to baseline behavior or low activity levels were

239 observed. We removed the speaker following each trial to reduce damage from monk parakeets  
240 and recharge speakers.

### 241 ***Data Collection***

242 During each trial, two observers recorded the behavioral response of the birds, one in blind 1 and  
243 one in either blind 2A or 2B (Figure 1). We observed group-level behavior five minutes prior to  
244 each playback session to establish baseline group-level behavior. We recorded two responses to  
245 playbacks for at least 50% of the captive group: (1) categorical group behavioral responses; (2)  
246 the time it took birds to cease response behavior and return to baseline behavior (latency in  
247 seconds). We then used group responses to score the overall flight responses observed.

248 To measure group responses, we scored group-level behaviors on a scale of 0-4: (0) no response  
249 (birds continue their activities without becoming vigilant); (1) vigilant (birds stop the behaviors  
250 they were performing, do not move, and become alert); (2) minor movement (birds become alert  
251 and there is slight movement in trees (e.g., hopping between branches)); (3) less than 50% fly  
252 ( $\leq 10$  birds take flight and become vigilant); (4) more than 50% birds fly ( $> 10$  birds take flight  
253 and become vigilant). We used the animal behavior data collection app Animal Observer  
254 (version 1.0, Dian Fossey Gorilla Fund International 2012; van der Marel et al., 2022) to score  
255 responses. Observers narrated into the voice recorder function of Animal Observer to record the  
256 behavior of visible birds starting 5 min prior to the playback to establish baseline behavior and  
257 ending narration 5 min after the playback, or until birds returned to baseline behavior. Observers  
258 also narrated when the playback session began, when the playback session ended, and when the  
259 majority of the birds ( $> 50\%$  of the captive group) resumed baseline behavior after the playback  
260 ended. Narrations should not alter behaviors of our captive group due to (1) habituation to

261 hearing human voices due to radio communication throughout the field season, (2) blind 1 is a  
262 large, closed structure which sound cannot easily travel through, 3) blinds 2A and blinds 2B are  
263 placed where parakeets rarely frequent, and (4) observers spoke low enough for birds to not hear  
264 the reporting of observations. Upon completion of the playback session, we determined the  
265 latency of all responses as the difference between the playback end time and the time at which  
266 the majority of birds resumed baseline behavior. We averaged latency measurements between  
267 blind 1 and the second blind we used (either blind 2A or 2B, see Figure 1), depending on which  
268 blind was randomly selected for observation.

### 269 ***Data Analysis***

270 We used mixed models to examine the effect of the three different playback stimuli (predator,  
271 conspecific, control) on group behavior and latency (Figure S2). We included playback stimuli  
272 and trial as independent factors. We included trial ( $n = 5$ ) to test for the effect of habituation on  
273 both group response and latency. We used playback track and observer as random factors in the  
274 group response model but only track as a random factor in the latency model. To begin model  
275 selection, we tested for the effect of each random factor by sequentially excluding one of the  
276 random factors. We then compared the AICc values of the different random effect models using  
277 the *performance* package (Lüdecke et al., 2021) and selected the model that best fits the data. We  
278 did not find a significant effect of observers on the model, indicating that this random factor  
279 would not bias our results. Therefore, we did not run a Z-test to control for observer bias and  
280 excluded observer for further analyses. We then built four models to examine which independent  
281 variables fit our data: a full model with all independent variables, two models where either  
282 playback stimuli or trial were omitted, and a null model where both independent variables were  
283 omitted (Figure S2). We fit these models to the data again with the *performance* package



284 (Lüdecke et al., 2021) and selected the model with the lowest AICc value. After model selection  
285 for both group responses and latency models, we tested for significant differences between the  
286 best fitted and null model from the *lmtest* package (Zeileis & Hothorn, 2002) using likelihood  
287 ratio tests (LRT). When the best-fitted model was significantly different from the null model, we  
288 performed an LRT to investigate the effect of that independent variable by comparing the best-  
289 fitted model with the independent variable of interest to a model without that independent  
290 variable. If the independent variable showed a significant effect, we assessed the statistical  
291 significance using Tukey's Honest Significant Differences.

292 We first examined the effect of the playback stimuli (predator, conspecific, control) on group  
293 behavior. Group behavior followed an ordinal distribution, so we used a cumulative link mixed  
294 model (CLMM) from the *ordinal* package (Christen, 2019). Then, since latency was a  
295 continuous variable, we used the *car* and *MASS* packages (Fox & Weisberg, 2019; Venables &  
296 Ripley, 2002) to examine which distribution best fits the data. We found that a normal  
297 probability distribution best fits our latency data, so we analyzed latency using linear mixed  
298 models (LMMs) in the *lme4* package (Bates et al., 2015). We checked for heteroscedasticity and  
299 overall model performance using the *performance* package. We reported the mean and standard  
300 deviation for latency for each playback stimulus below. Finally, we derived flight responses from  
301 group behaviors using a scale from 1 to -1, with the sign contingent on whether it was a  
302 repulsion behavior (positive) or an attraction behavior (negative). Flight responses were given a  
303 score based on these criteria: (0): no behavior, vigilant, or minor movement; ( $\pm 0.5$ ): less than  
304 50% of birds fly; ( $\pm 1$ ): more than 50% of birds fly. To examine differences in flight behaviors  
305 among the playback stimuli, we analyzed the flight responses using Kruskal-Wallis' one-way  
306 analysis of variance followed by a pairwise comparison using Wilcoxon's rank-sum test.

307 We completed all analyses in RStudio v.4.1.0 (R Core Team, 2021). We made all plots using the  
308 *ggplot2* package (Wickham, 2016) and aestheticized plots (e.g., adding species icons) in Adobe  
309 Illustrator (Adobe Illustrator, Adobe Inc.).

## 310 **Results**

311 We conducted 20 playback trials: 5 repulsion playbacks (predator calls), 10 attraction playbacks  
312 (conspecific calls: 5 non-native range and 5 native range), and 5 control playbacks (mourning  
313 dove calls). We assessed whether playback stimuli influenced group response, latency, and flight  
314 response.

### 315 *How Do Monk Parakeets Behaviorally Respond to Playbacks?*

316 We found significant differences in group response among playback stimuli (LRT:  $\Lambda = 17.70$ ,  $p$   
317  $< 0.001$ ; Table 2). Monk parakeets exhibited significant differences in group responses to  
318 predator playbacks compared to conspecific playbacks (Tukey's  $p < 0.05$ ) and control playbacks  
319 (Tukey's  $p < 0.05$ ) (Table 2, Figure 2A and 3). In response to predator playbacks, monk  
320 parakeets exhibited more than half-flock dispersal for 60% of trials, at least half-flock dispersal  
321 for 20% of trials, and vigilance for 20% of trials (Figure 3). We did not find significant  
322 differences in group responses to conspecific playbacks compared to control playbacks (Tukey's  
323  $p = 0.15$ ) (Table 2, Figure 2A and 3). In response to conspecific playbacks, monk parakeets  
324 exhibited half-flock dispersal in 10% of trials, with no change in behavior, minor movement, and  
325 vigilance making up 20%, 10%, and 60% of trials, respectively (Figure 3). In response to control  
326 playbacks, monk parakeets exhibited vigilance for 40% of trials and no change in behavior for  
327 60% of trials (Figure 3). We found no evidence that monk parakeets habituated regarding group

328 response to playback stimuli as trial was not included in the model with the lowest AICc value  
329 (Table 1, Figure S3).

330 **Table 1.** AIC model selection results for the effects of playback stimuli on group response and  
 331 latency. Exemplar was included as a random factor for each model. K is the number of estimated  
 332 parameters for each model, LL is the log-likelihood of each model, AICc is the second-order  
 333 AIC, Delta is the difference in AIC score between the best model and the model being compared,  
 334 Weight is the weight of evidence in favor of a given model, and R<sup>2</sup> is the proportion of variance  
 335 in the dependent variable that can be explained by the selected independent variable(s). R<sup>2</sup> is not  
 336 available for group response.

<b>Response Variable</b>	<b>Variable(s)</b>	<b>K</b>	<b>LL</b>	<b>AICc</b>	<b>Delta</b>	<b>Weight</b>	<b>R<sup>2</sup></b>
<b>Group response</b>	Playback Stimuli + Trial	11	-15.14	85.28	24.82	< 0.001	NA
	<b>Playback Stimuli</b>	<b>7</b>	<b>-18.56</b>	<b>51.12</b>	<b>0</b>	<b>0.99</b>	<b>NA</b>
	Trial	9	-25.88	87.76	27.31	< 0.001	NA
	Null	5	-27.41	69.11	8.65	0.01	NA
<b>Latency</b>	<b>Playback Stimuli + Trial</b>	<b>9</b>	<b>-59.16</b>	<b>154.32</b>	<b>0</b>	<b>0.995</b>	<b>0.71</b>
	Playback Stimuli	5	-75.33	164.95	10.63	0.005	0.64
	Trial	7	-75.78	174.89	20.58	< 0.001	0.09
	Null	3	-92.02	191.55	37.23	< 0.001	< 0.001

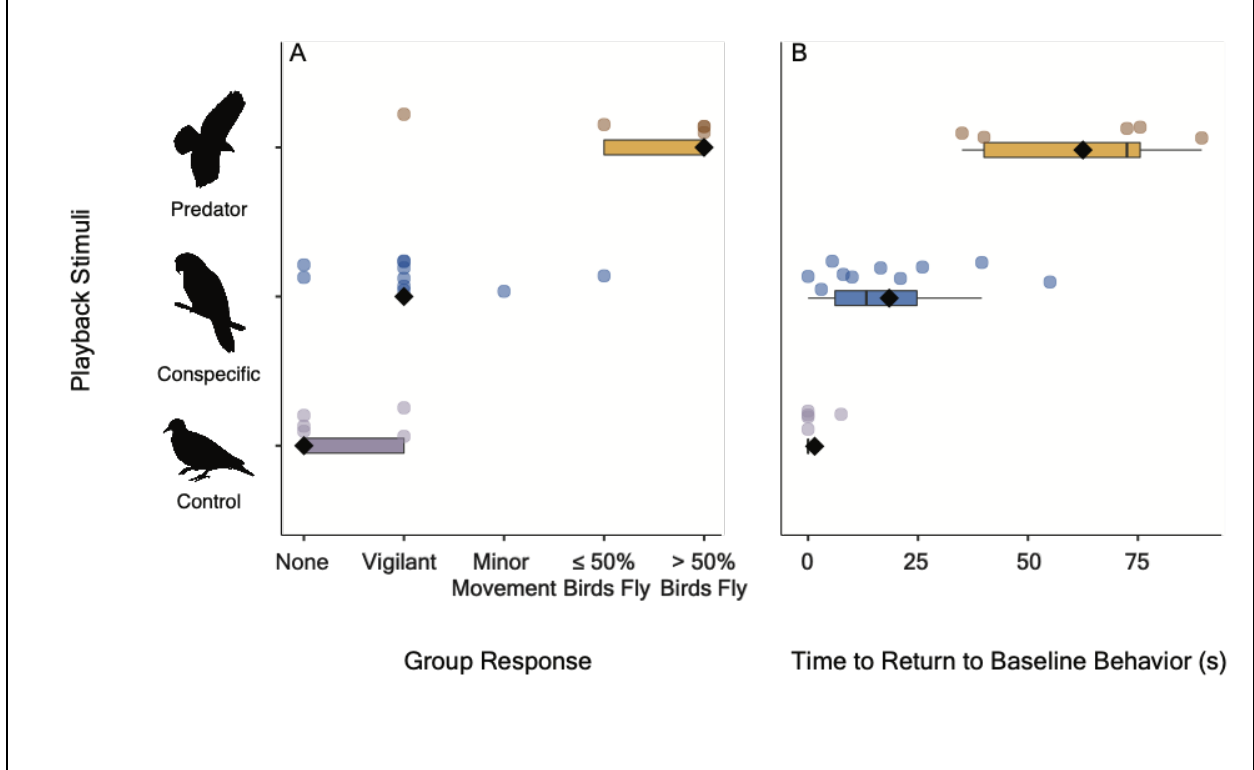
337

338 **Table 2.** 95% confidence interval results for effects of playback stimuli on group response and  
 339 latency. 95% confidence interval is reported as (LL, UL) such that LL = lower limit for 95%  
 340 confidence interval and UL = upper limit for 95% confidence interval. Intercept is not available  
 341 for group response.

	<b>Group response</b>	<b>Latency</b>
Family	Ordinal	Gaussian
Intercept	NA	(-2.86, 26.06)
Conspecific playback	(-0.16, 6.78)	<b>(2.48, 31.42)</b>
Predator playback	<b>(2.32, 16.68)</b>	<b>(44.29, 77.71)</b>

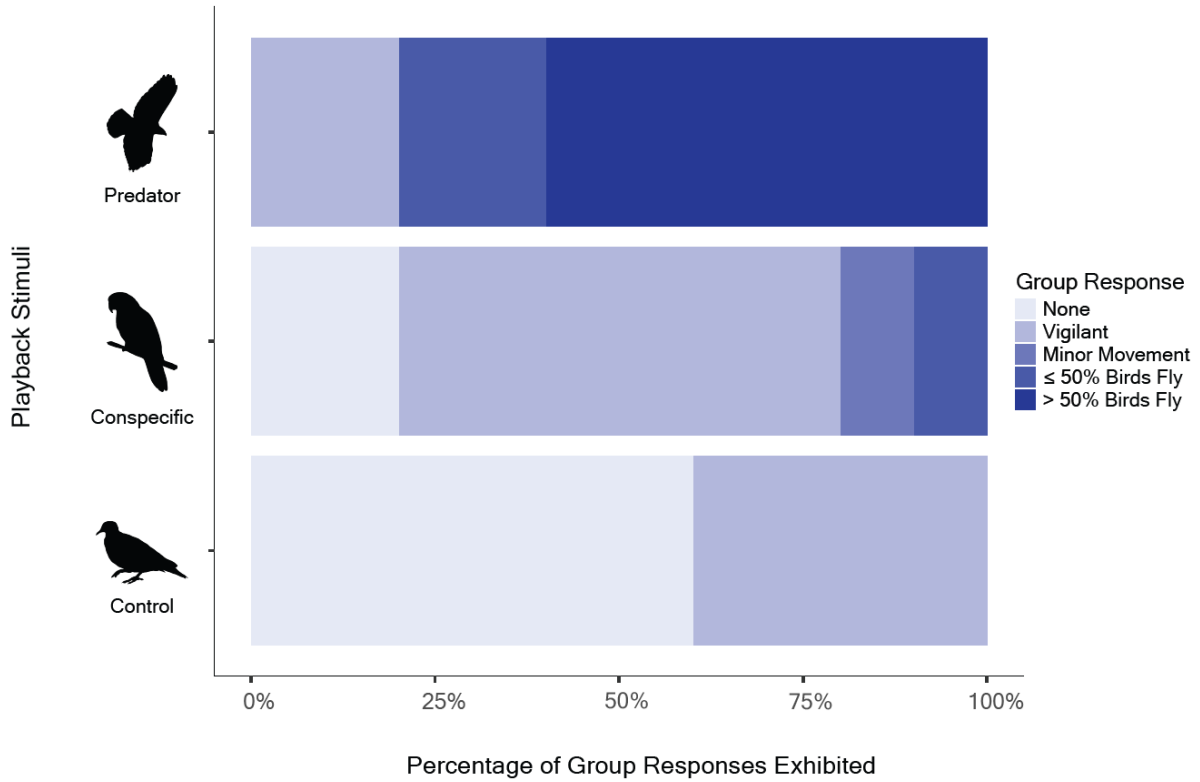
342

**Figure 2.** Behavioral responses to playback stimuli. In panel A, group-level responses are on the x-axis. In panel B, the time to return to baseline behavior in seconds (latency) is on the x-axis. Repulsion (predator – red-tailed hawk,  $n = 5$ ), attraction (conspecific – monk parakeet,  $n = 10$ ), and control (non-predatory – mourning dove,  $n = 5$ ) stimuli are on the y-axis. Measurements are shown in box plots with the median (panel A) and mean (panel B) shown as black diamonds. Error bars indicate 95% confidence intervals.



343

**Figure 3.** The percentage of group responses in response to playback stimuli. Stronger group responses are shown in darker blue and weaker behavioral responses in lighter blue.



345 ***How Long do Monk Parakeets Take to Return to Baseline Behavior?***

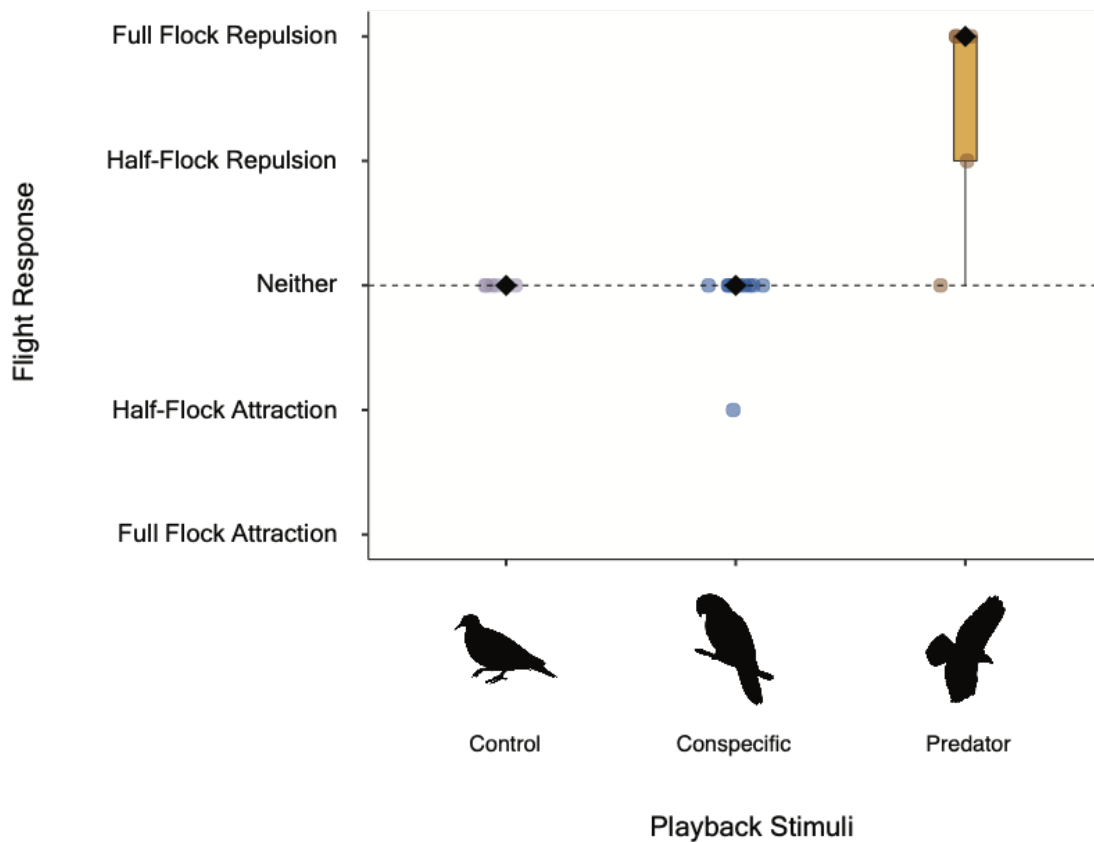
346 The model that best explained latency included playback stimuli and trial (LRT:  $\Lambda = 30.70$ ,  $p <$   
347  $0.001$ ; Table 1). We found significant differences in latency among playback stimuli (LRT:  $\Lambda =$   
348  $28.22$ ,  $p < 0.001$ ; Fig. 2B), but we did not find a significant effect of trial on latency (LRT:  $\Lambda =$   
349  $8.64$ ,  $p = 0.07$ ; Table 1, Figure S4). Average latency to return to baseline behavior in response to  
350 predator playbacks ( $62.50 \pm 23.77$  s) was longer and had more variation than conspecific ( $18.50$   
351  $\pm 17.56$  s; Tukey's  $p < 0.01$ ) and control ( $1.50 \pm 3.35$  s; Tukey's  $p < 0.001$ ) playbacks (Table 2,  
352 Figure 2B). Unlike overall group response, the effect of conspecific playbacks on latency to  
353 return to baseline behavior was not significantly different compared to control playbacks  
354 (Tukey's  $p = 0.18$ ; Table 2, Figure 2B), although the confidence interval did not include zero  
355 (Table 2).

356 ***Which Playback Stimulus Produced a Flight Response?***

357 We found significant differences in flight responses (Kruskal-Wallis's  $p < 0.01$ ) and that the  
358 flight response of predator playbacks was more consistent than conspecific playbacks (Figure 4).  
359 Predator playbacks elicited repulsion behavior in 80% of playback trials and showed significant  
360 differences in flight response when compared to conspecific (Wilcoxon's  $p < 0.05$ ) and control  
361 flight responses (Wilcoxon's  $p = 0.01$ ). Unlike predator playbacks, conspecific playbacks only  
362 produced the predicted behavior (attraction) in 10% of trials (Figure 3). Conspecific playbacks  
363 showed no significant difference in flight response compared to the control playbacks  
364 (Wilcoxon's  $p = 0.57$ ).



**Figure 4.** Repulsion and attraction behavior in response to playback stimuli. Group responses to predator playbacks ( $n = 5$ ), conspecific playbacks ( $n = 10$ ), and control playbacks ( $n = 5$ ) were rescaled and categorized in the context of repulsion and attraction. Predator playbacks showed significant differences in flight response compared to both conspecific and control playbacks. Measurements are shown in box plots with the median indicated by black diamonds. Error bars indicate 95% confidence intervals.



366 **Discussion**

367 The primary objective of this study was to test how different auditory stimuli (predator or  
368 conspecific) produced repulsion or attraction behaviors in a captive population of monk  
369 parakeets. We found differences in how strongly the parakeets responded to both types of  
370 stimuli, which could be important to consider when integrating auditory stimuli into management  
371 strategies for this species.

372 Our results support the hypothesis that predator vocalizations cause flock dispersal away from  
373 auditory sources (repulsion). Predator playbacks produced stronger behavioral responses in  
374 monk parakeets than conspecific and mourning dove playbacks. Predator playbacks resulted in  
375 flight 80% of the time, whereas conspecific playbacks resulted in flight 10% of the time, and  
376 mourning dove playbacks never produced flight behavior. Additionally, predator playbacks with  
377 few and many vocalizations elicited mostly repulsion behavior and exhibited variation in latency.  
378 This variation in latency is likely not due to the number of vocalizations per track but may be a  
379 consequence of an individual's social environment, such as the vigilance of their nearest  
380 neighbor (e.g., van der Marel et al., 2021). Overall, our results align with studies that showcase  
381 strong behavioral responses to predators in the form of mobbing, movement, and/or vocalizing  
382 (Crawford et al., 2022; Dutour, Lena, & Lengagne, 2017; Manser, Seyfarth, & Cheney, 2002;  
383 Zuberbühler, 2001). For example, predator playbacks of the sparrow hawk (*Accipiter nisus*)  
384 successfully repelled house sparrows (*Passer domesticus*), with no habituation observed after six  
385 days of exposure (Frings & Frings, 1967), and playbacks of a peregrine falcon (*Falco*  
386 *peregrinus*) call was also effective at dispersing gulls from Vancouver International Airport  
387 (Gunn, 1973). Because of these strong responses, managers seeking to temporarily displace  
388 monk parakeets from a specific area may have success using predator calls.

389 In contrast, our results do not support the hypothesis that conspecific calls attract parakeets to the  
390 auditory source, with no significant differences found between the conspecific and control  
391 stimuli. We found that conspecific calls resulted in weak or no attraction of parakeets to the  
392 stimulus despite support for attraction to conspecific vocalizations across taxa (see Buxton et al.,  
393 2020), with half-flock movement towards the auditory source observed only once across all ten  
394 playbacks. From a management perspective, our results indicate that conspecific calls may not be  
395 effective stimuli to attract parakeets to a specific area, for example, to facilitate trapping.  
396 However, other variables may need to be considered when selecting conspecific vocalizations for  
397 playbacks, which may affect their effectiveness for management aims. For example, Nocera et  
398 al. (2006) showed that, due to a lack of experience, natal dispersers (i.e., juveniles) might be  
399 more receptive to conspecific vocalizations. Kelly and Ward (2017) suggested that in yellow  
400 warblers (*Setophaga petechia*), site selection via conspecific attraction is more successful when  
401 vocalizations from paired males are used, while Connell et al. (2019) suggested that in black-  
402 tailed prairie dogs (*Cynomys ludovicianus*), other cues, such as the physical presence of and/or  
403 relationship to the caller, may be essential factors to consider for playbacks.

404 An individual's response to an auditory cue may depend on the social information communicated  
405 through vocalizations in a particular social system. For example, monk parakeets may respond to  
406 conspecific calls based on their relationship to the caller (Hobson et al., 2015), which has been  
407 seen in other birds such as acorn woodpeckers (*Melanerpes formicivorus*) (Pardo et al., 2018),  
408 carrion crows (*Corvus corone*) (Wascher et al., 2012), and ravens (*Corvus corax*) (Szipl et al.,  
409 2015). Parakeets may also respond based on the locality of the call, which has been observed in  
410 rufous-collared sparrows (*Zonotrichia capensis*) (Danner et al., 2011), yellow-naped Amazons  
411 (*Amazona auropalliata*) (Wright & Dorin, 2001), and stonechats (*Saxicola torquata*)(Mortega,

412 Flinks, & Helm, 2014). Moreover, monk parakeets exhibit unique vocal signatures in contact  
413 calls tied to individual identities, and these individual signatures are simpler in smaller non-  
414 native range populations, which suggests that monk parakeets use contact calls to recognize  
415 distinct individuals (Smith-Vidaurre, Araya-Salas, & Wright, 2020; Smith-Vidaurre, Perez-  
416 Marrufo, & Wright, 2021). Therefore, it may be useful for researchers to explore behavioral  
417 responses to familiar or unfamiliar individuals to determine which calls may be best for  
418 management purposes.

419 We did not examine differences in individual responses to playbacks with this study design.  
420 However, it can be important to understand how individual characteristics (e.g., sex or age) and  
421 social relationships (e.g., partnered with another individual) influence an individual's response to  
422 stimuli and how this may influence overall group-decision making for a robust management  
423 approach. For example, Kerman (2018) found that male monk parakeets that are risk-averse  
424 while foraging become bolder in the presence of conspecifics, and it has been observed that  
425 monk parakeets decrease vigilance effort as flock size increases (South & Pruett-Jones, 2000).  
426 Thus, assessing how social context (e.g., flock size) may underlie behavioral responses to  
427 external stimuli could be necessary for management success. When managing group-living  
428 species such as monk parakeets, it may be important to adjust for population-level differences  
429 due to possible individual and group-level behavioral variation as a result of unique ecological  
430 pressures (Maldonado-Chaparro & Chaverri, 2021). Future studies should explicitly consider  
431 how individual, population, and temporal characteristics, including variation in group size and  
432 season, influence responses to sensory cues that may be useful for management.

433 ***Management Implications***

434 Our results showcase clear behavioral outcomes based on the playback stimuli used, with no  
435 evidence of habituation, that are promising for management purposes. Auditory cues can be used  
436 at a very low cost, with little to no ecosystem disturbance, and are readily available.  
437 Furthermore, auditory cues may not come with conflicts of interest compared to other forms of  
438 management, such as culling via poisons (van Eeden et al., 2017).

439 Our results show that predator playbacks produced a momentary change in behavior in captive  
440 monk parakeets. Predator stimuli may be useful when management objectives require the  
441 temporary dispersal of individuals from a small area. For example, once monk parakeets are  
442 detected at a site, predator playbacks may help disperse birds and prevent site-specific nest  
443 building (Burgio, Rubega, & Sustaita, 2014). When implementing predator playbacks, managers  
444 should consider the geographic location of the monk parakeet population to select the  
445 appropriate predator(s). In Florida, common avian predators include the red-tailed hawk, red-  
446 shouldered hawk (*Buteo lineatus*), and Cooper's hawk (*Accipiter cooperii*), but in other  
447 introduced locations such as the Iberian Peninsula, avian predators such as the Eurasian  
448 sparrowhawk (*Accipiter nisus*) and Eurasian kestrel (*Falco tinnunculus*) may be more  
449 appropriate choices.

450 When considering playbacks as part of a management plan, the timing of the intervention should  
451 also be carefully considered, as the parakeets may be more or less responsive to predator stimuli.  
452 For example, monk parakeet site fidelity increases once nests have been established (Dawson  
453 Pell et al., 2021), so management interventions could be timed to occur prior to this increased  
454 fidelity. Because of this high nest fidelity, it is unlikely that predator playbacks would cause nest

455 and site abandonment once the parakeets have initiated nest building. Although auditory cues  
456 alone may not be enough to control a particular group or population, coupling auditory cues with  
457 additional management strategies may be powerful for desired outcomes. In this case, it may be  
458 useful to leverage an integrated approach, including other currently implemented avian  
459 management tools, e.g., frightening devices (Enos, Ward, & Hauber, 2021). For example, in  
460 areas where lethal shooting is authorized and safe to implement, using predator playbacks to  
461 prompt flocking behavior could help maximize the efficacy of culling as a management tool.

462 Several variables should be considered when incorporating playback stimuli into management  
463 strategies to optimize success and effectiveness: (1) the establishment stage in settlement of non-  
464 native populations of monk parakeets (e.g., the arrival of new founders vs more established  
465 breeding populations) (Dawson Pell et al., 2021), (2) the estimated flock-size of the focal group  
466 of monk parakeets (South & Pruett-Jones, 2000), and (3) the ecological and/or management  
467 purpose of the playback. For instance, strategies resulting in temporary repulsion could be used  
468 when the return of the focal species is an acceptable management outcome, but methods that  
469 facilitate permanent deterrence would be necessary to ensure that a focal species will not return  
470 to a given area. These factors will influence the type of playback a manager is interested in using  
471 (e.g., heterospecific vs conspecific) and, consequently, the efficacy of the selected playback to  
472 alter the behavior of monk parakeets in a manner deemed useful for management purposes.

### 473 ***Conclusion***

474 Our experiments show the potential for repulsion stimuli to be an effective tool for some  
475 management plans for monk parakeet populations, where the goal is to temporarily displace a  
476 flock of parakeets and induce flight and vigilance behaviors. Our results re-emphasize the

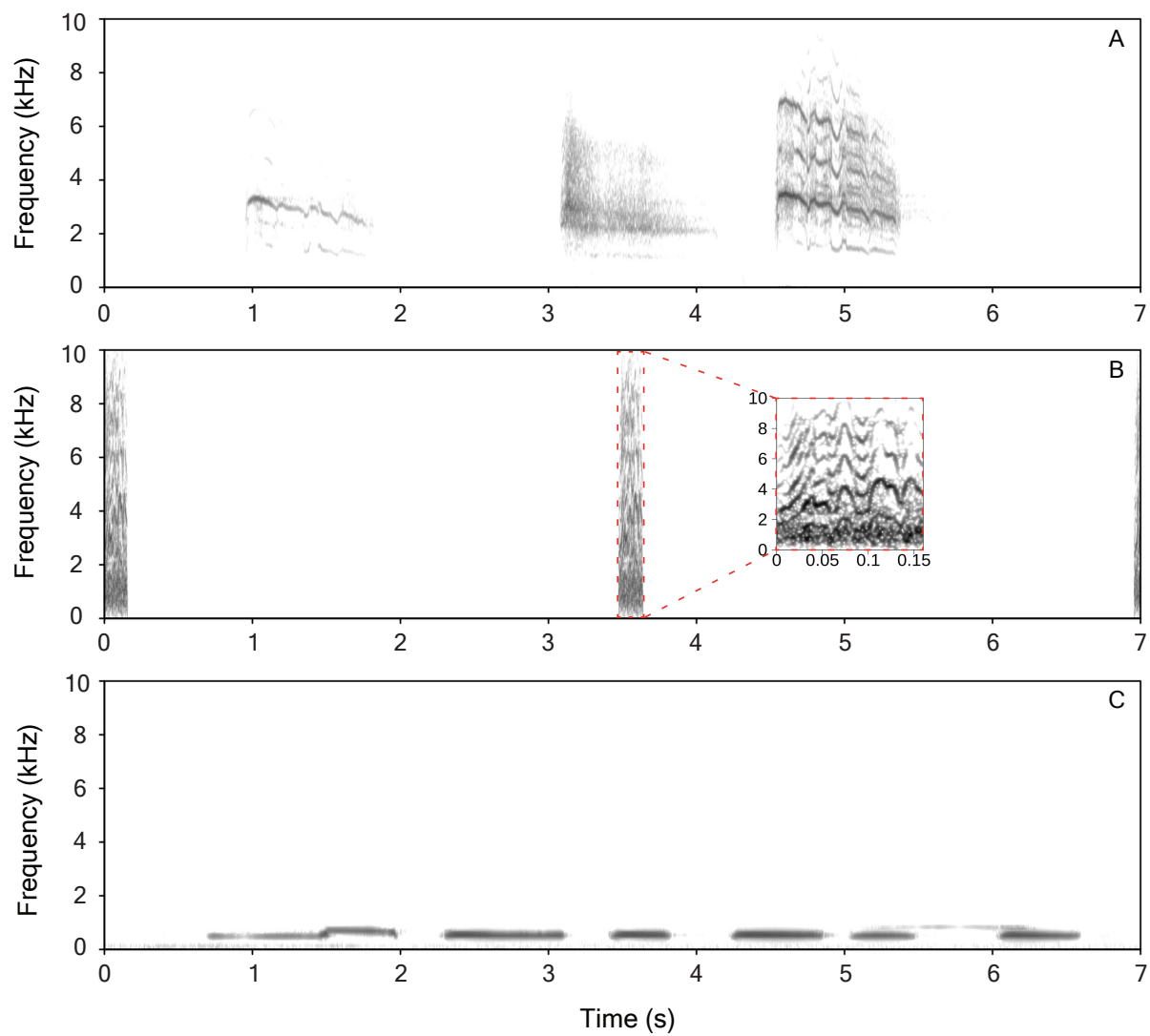
477 importance of informing management with data from experiments. These results can then be  
478 framed to recommend options managers can consider when managing monk parakeet  
479 populations and other avian populations that rely on ecological information in the form of  
480 auditory cues.

481 **Acknowledgements**

482 We acknowledge that the fieldwork for this project was conducted on the ancestral and unceded  
483 lands of the Seminole and Timucua people. We acknowledge that the majority of writing and  
484 data analysis was completed at UC Berkeley which sits on the ancestral and unceded lands of the  
485 Ohlone people. These lands of what is now considered Gainesville, Florida and Berkeley,  
486 California continue to be great importance to their respective Indigenous people, and we  
487 recognize that we benefit from the use and occupation of these lands. We would like to thank the  
488 USDA staff, especially Eric Tillman, John Humphrey, Danyelle Sherman, and Palmer Harrell,  
489 for their assistance and support. We would like to the thank Christine Wilkinson, Tal Caspi,  
490 Yasmine Hentati, Lauren Stanton, Samantha Kreling, Brian Stokes, and Stavi Tennenbaum for  
491 feedback on an early version of this manuscript. We would also like to thank the editor and two  
492 anonymous reviewers for comments that improved this manuscript. During preparation of this  
493 work, COE was supported by University of California, Berkeley's Chancellor Fellowship and the  
494 National Science Foundation Graduate Research Fellowship under Grant No. DGE-2146752,  
495 GSV was supported by an NSF Postdoctoral Research Fellowship (grant number 2010982), and  
496 XF and EAH was supported by NSF IOS 2015932. Any opinions, findings, and conclusions or  
497 recommendations expressed in this material are those of the author(s) and do not necessarily  
498 reflect the views of the National Science Foundation. The findings and conclusions in this  
499 publication have not been formally disseminated by the U.S. Department of Agriculture and  
500 should not be construed to represent any agency determination or policy. This research was  
501 supported in part by the U.S. Department of Agriculture, National Wildlife Research Center.



**Figure S1.** Spectrogram images of playback files. A multi-panel comprised of spectrograms for the first seven seconds of each call category. Panel A displays calls from the predator vocalization (red-tailed hawk). Panel B displays calls from the conspecific vocalization (monk parakeet). Panel C displays a call from the control vocalization (mourning dove). Frequency in kilohertz (kHz) is shown on the y-axis and time in seconds is shown on the x-axis.



**Figure S2.** Equations used in mixed-models.

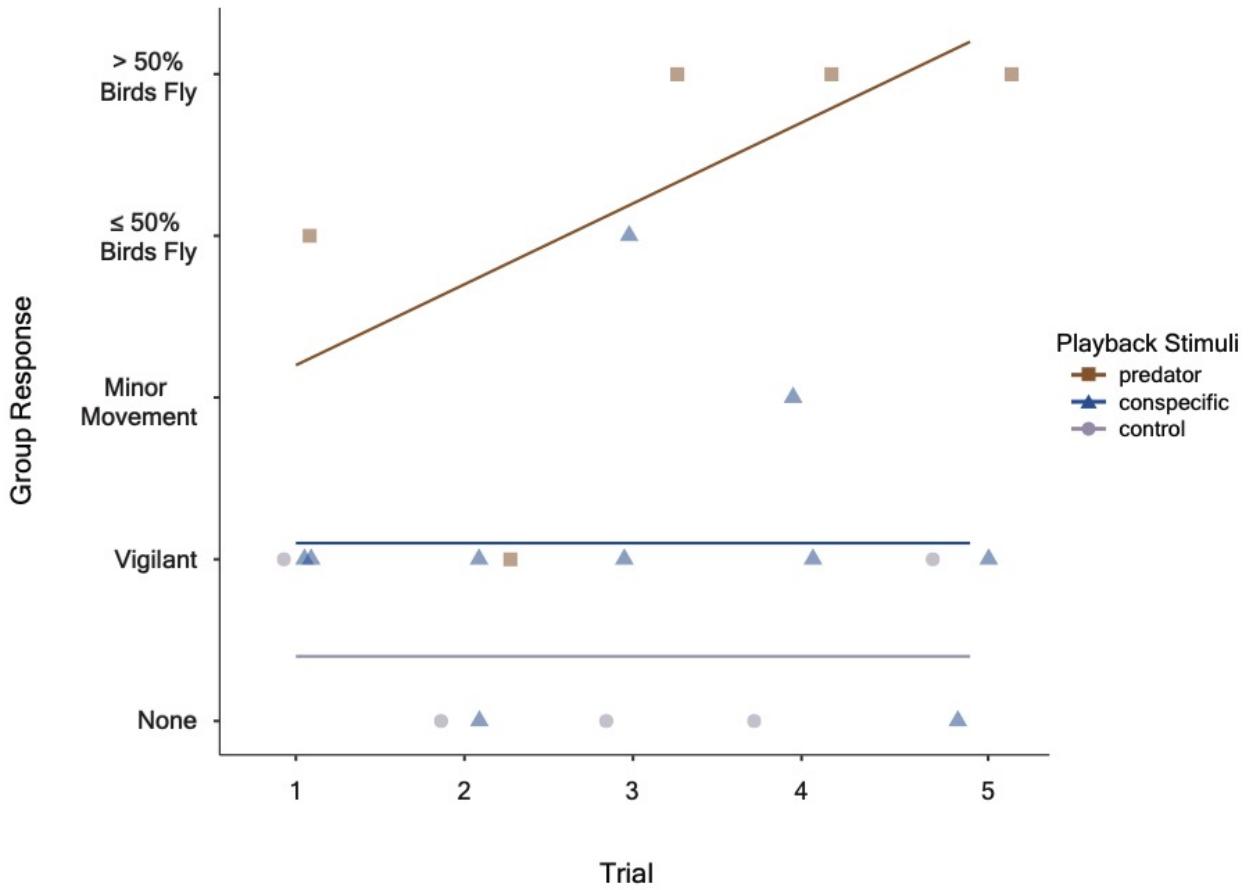
**Mixed-Model Equations for Group Response:**

```
ordinal_1 <- clmm(group response ~ call category + (1|exemplar))  
ordinal_2 <- clmm(group response ~ call category + trial + (1|exemplar))  
ordinal_3 <- clmm(group response ~ trial + (1|exemplar))  
ordinal_null <- clmm(group response ~ 1 + (1|exemplar))
```

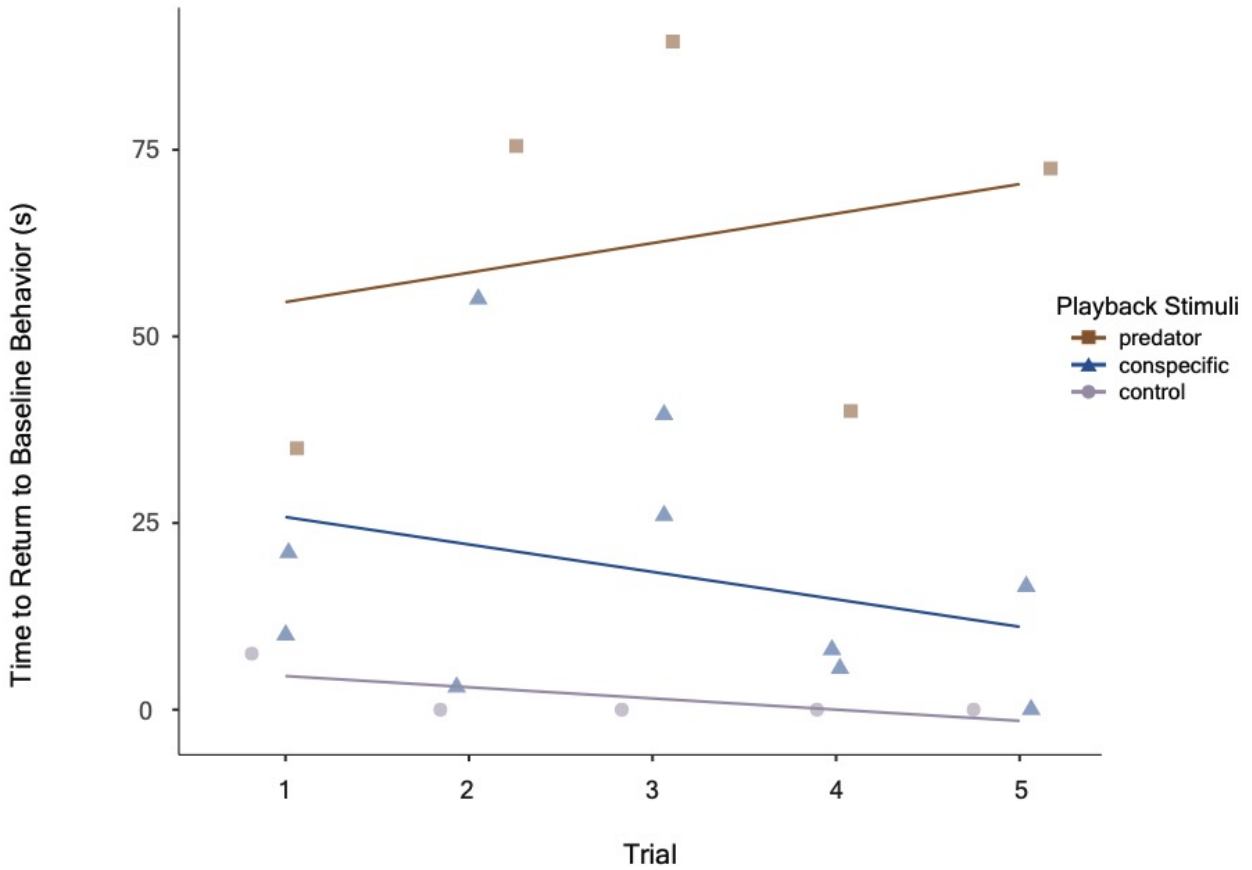
**Mixed-Model Equations for Latency:**

```
LM_1 <- lmer(latency ~ call category + (1|exemplar))  
LM_2 <- lmer(latency ~ call category + trial + (1|exemplar))  
LM_3 <- lmer(latency ~ trial + (1|exemplar))  
LM_null <- lmer(latency ~ 1 + (1|exemplar))
```

**Figure S3.** Groups' responses to playback stimuli over the test period. Group responses are colored by playback stimuli: predator playbacks (brown), conspecific playbacks (blue), and control playbacks (purple). Monk parakeets did not show habituation in their responses to playbacks over all trials.



**Figure S4.** Latency in response to playback stimuli over the test period. Latency is colored by playback stimuli: predator playbacks (brown), conspecific playbacks (blue), and control playbacks (purple). Monk parakeets did not show habituation in their latency to playbacks over all trials.



507 **References**

- 508 Adams, D. B., & Kitchen, D. M. (2020). Model vs. playback experiments: The impact of sensory  
509 mode on predator-specific escape responses in saki monkeys. *Ethology*, *126*(5), 563–575.
- 510 Adobe Inc. (2019). Adobe Illustrator, Available at: <https://adobe.com/products/illustrator>.
- 511 Ahlering, M. A., Arlt, D., Betts, M. G., Fletcher, R. J., Nocera, J. J., & Ward, M. P. (2010).  
512 Research Needs and Recommendations for the use of Conspecific-Attraction Methods in  
513 the Conservation of Migratory Songbirds. *The Condor*, *112*(2), 252–264.
- 514 Arteaga-Torres, J. D., Wijmenga, J. J., & Mathot, K. J. (2020). Visual cues of predation risk  
515 outweigh acoustic cues: a field experiment in black-capped chickadees. *Proceedings of*  
516 *the Royal Society B: Biological Sciences*, *287*(1936), 20202002.
- 517 Avery, M.L. (2020) Monk Parakeet (*Myiopsitta monachus* Boddaert, 1783). In: Downs, C.T. and  
518 Hart, L.A. (eds) *Invasive Birds: Global Trends and Impacts*. CAB International,  
519 Wallingford, UK, pp. 76-84.
- 520 Avery, M. L., Greiner, E. C., Lindsay, J. R., Newman, J. R., & Pruett-Jones, S. (2002). Monk  
521 parakeet management at electric utility facilities in south Florida. *Proceedings of the*  
522 *Vertebrate Pest Conference*, *20*, 140-145.
- 523 Avery, M. L., & Lindsay, J. R. (2016). *Monk Parakeets. Wildlife Damage Management*  
524 *Technical Series*. USDA, APHIS, WS National Wildlife Research Center, Ft. Collins,  
525 Colorado. 11p.
- 526 Barbosa, J. M., Hiraldo, F., Romero, M. Á., & Tella, J. L. (2021). When does agriculture enter  
527 into conflict with wildlife? A global assessment of parrot–agriculture conflicts and their  
528 conservation effects. *Diversity & Distributions*, *27*(1), 4–17.
- 529 Bates, D., Mäechler, M., Bolker, B., Walker, S. (2015). Fitting Linear Mixed-Effects Models  
530 Using lme4. *Journal of Statistical Software*, *67*(1), 1-48.

531 Berge, A., Delwiche, M., Paul Gorenzel, W., & Salmon, T. (2007). Bird Control in Vineyards  
532 Using Alarm and Distress Calls. *American Journal of Enology and Viticulture*, *58*(1),  
533 135–143.

534 Bioacoustics Research Program. (2014). *Raven Pro: interactive sound analysis software (version*  
535 *1.5) [Computer software]*. Ithaca (NY) :The Cornell Lab of Ornithology. Available  
536 from <http://www.birds.cornell.edu/raven>.

537 Boycott, T. J., Mullis, S. M., Jackson, B. E., & Swaddle, J. P. (2021). Field testing an “acoustic  
538 lighthouse”: Combined acoustic and visual cues provide a multimodal solution that  
539 reduces avian collision risk with tall human-made structures. *PloS One*, *16*(4), e0249826.

540 Bradbury, J. W., & Balsby, T. J. S. (2016). The functions of vocal learning in parrots. *Behavioral*  
541 *Ecology and Sociobiology*, *70*(3), 293–312.

542 Bshary, R. (2001). Diana monkeys, *Cercopithecus diana*, adjust their anti-predator response  
543 behaviour to human hunting strategies. *Behavioral Ecology and Sociobiology*, *50*(3),  
544 251–256.

545 Bucher, E. H., & Aramburú, R. M. (2014). Land-use changes and monk parakeet expansion in  
546 the Pampas grasslands of Argentina. *Journal of Biogeography*, *41*(6), 1160–1170.

547 Bucher, E. H., Martin, L. F., Martella, M. B., & Navarro, J. L. (1990). - *Acta XX Congressus*  
548 *Internationalis Ornithologici*, *2*, 681–689.

549 Budka, M., Matyjasiak, P., Typiak, J., Okołowski, M., & Zagalska-Neubauer, M. (2019).  
550 Experienced males modify their behaviour during playback: the case of the Chaffinch.  
551 *Journal of Ornithology*, *160*(3), 673–684.

552 Burgio, K. R., Rubega, M. A., & Sustaita, D. (2014). Nest-building behavior of Monk Parakeets  
553 and insights into potential mechanisms for reducing damage to utility poles. *PeerJ*, 2,  
554 e601.

555 Buxton, V. L., Enos, J. K., Sperry, J. H., & Ward, M. P. (2020). A review of conspecific  
556 attraction for habitat selection across taxa. *Ecology and Evolution*, 10(23), 12690–12699.

557 Buxton, V. L., Ward, M. P., & Sperry, J. H. (2018). Evaluation of Conspecific Attraction as a  
558 Management Tool across Several Species of Anurans. *Diversity*, 10(1), 6.

559 CABI. (2010). *Myiopsitta monachus* (monk parakeet).  
560 <<https://www.cabi.org/isc/datasheet/74616>>. Accessed 10 January 2021.

561 Calzada Preston, C. E., & Pruett-Jones, S. (2021). The Number and Distribution of Introduced  
562 and Naturalized Parrots. *Diversity*, 13(9), 412.

563 Chamailé-Jammes, S., Malcuit, H., Le Saout, S., & Martin, J.-L. (2014). Innate threat-sensitive  
564 foraging: black-tailed deer remain more fearful of wolf than of the less dangerous black  
565 bear even after 100 years of wolf absence. *Oecologia*, 174(4), 1151–1158.

566 Christensen, R. H. B. (2019). ordinal - Regression Models for Ordinal Data. R package version  
567 2019.12-10. <https://CRAN.R-project.org/package=ordinal>.

568 Connell, L. C., Porensky, L. M., Chalfoun, A. D. & Scasta, J. D. (2019). Black-Tailed Prairie  
569 Dog, *Cynomys Ludovicianus* (Sciuridae), Metapopulation Response to Novel Sourced  
570 Conspecific Signals. *Animal Behaviour*, 150, 189–199.

571 Crawford, D. A., Conner, L. M., Clinchy, M., Zanette, L. Y., & Cherry, M. J. (2022). Prey tells,  
572 large herbivores fear the human “super predator.” *Oecologia*, 218, 91-98.

573 Danner, J. E., Danner, R. M., Bonier, F., Martin, P. R., Small, T. W., & Moore, I. T. (2011).  
574 Female, but not male, tropical sparrows respond more strongly to the local song dialect:  
575 implications for population divergence. *The American Naturalist*, *178*(1), 53–63.

576 Davies, R. G., Orme, C. D. L., Webster, A. J., Jones, K. E., Blackburn T. M., & Gaston, K. J.  
577 (2007). Environmental Predictors of Global Parrot (Aves: Psittaciformes) Species  
578 Richness and Phylogenetic Diversity. *Global Ecology and Biogeography*, *16*, 220-233.

579 Davis, L. R. (1974). The monk parakeet: A potential threat to agriculture. *Proceedings of the*  
580 *Vertebrate Pest Conference*, *6*(6). <https://escholarship.org/uc/item/257183xh>

581 Dawson Pell, F. S. E., Senar, J. C., Franks, D. W., & Hatchwell, B. J. (2021). Fine-scale genetic  
582 structure reflects limited and coordinated dispersal in the colonial monk parakeet,  
583 *Myiopsitta monachus*. *Molecular Ecology*, *30*(6), 1531–1544.

584 de Matos Fragata, M., Baccaro, F., Gonçalves, A. L. S., & Borges, S. H. (2022). Living in a  
585 tropical concrete jungle: diversity and abundance variation in a parrot assemblage (Aves,  
586 Psittacidae) of a major Amazonian city. *Urban Ecosystems*, *25*, 977-987.

587 DeJong, L. N., Cowell, S. D., Nguyen, T. N. N., & Proppe, D. S. (2015). Attracting songbirds  
588 with conspecific playback: a community approach. *Behavioral Ecology*, *26*(5), 1379–  
589 1388.

590 Depino, E. A., & Areta, J. I. (2019). V-Netting with Playback: an Active Cost-Effective Method  
591 for Trapping Small Rails. *Ardeola*, *67*(1), 101–112.

592 Des Roches, S., Brans, K. I., Lambert, M. R., Rivkin, L. R., Savage, A. M., Schell, C. J., Correa,  
593 C., De Meester, L., Diamond, S. E., Grimm, N. B., Harris, N. C., Govaert, L., Hendry, A.  
594 P., Johnson, M. T. J., Munshi-South, J., Palkovacs, E. P., Szulkin, M., Urban, M. C.,



595 Verrelli, B. C., & Alberti, M. (2021). Socio-eco-evolutionary dynamics in cities.  
596 *Evolutionary Applications*, 14(1), 248–267.

597 Dutour, M., Lena, J.-P., & Lengagne, T. (2017). Mobbing behaviour in a passerine community  
598 increases with prevalence in predator diet. *The Ibis*, 159(2), 324–330.

599 Eberhard, J. R. (1998). Breeding Biology of the Monk Parakeet. *The Wilson Bulletin*, 110(4),  
600 463–473.

601 Edelaar, P., Roques, S., Hobson, E. A., Gonçalves da Silva, A., Avery, M. L., Russello, M. A.,  
602 Senar, J. C., Wright, T. F., Carrete, M., & Tella, J. L. (2015). Shared genetic diversity  
603 across the global invasive range of the monk parakeet suggests a common restricted  
604 geographic origin and the possibility of convergent selection. *Molecular Ecology*, 24(9),  
605 2164–2176.

606 Elmer, L. K., Madliger, C. L., Blumstein, D. T., Elvidge, C. K., Fernández-Juricic, E.,  
607 Horodysky, A. Z., Johnson, N. S., McGuire, L. P., Swaisgood, R. R., & Cooke, S. J.  
608 (2021). Exploiting common senses: sensory ecology meets wildlife conservation and  
609 management. *Conservation Physiology*, 9(1), coab002.

610 Enck, J. W., Decker, D. J., Riley, S. J., Organ, J. F., Carpenter, L. H., & Siemer, W. F. (2006).  
611 Integrating Ecological and Human Dimensions in Adaptive Management of Wildlife-  
612 Related Impacts. *Wildlife Society Bulletin*, 34(3), 698–705.

613 Enos, J. K., Ward, M. P., & Hauber, M. E. (2021). A review of the scientific evidence on the  
614 impact of biologically salient frightening devices to protect crops from avian pests. *Crop*  
615 *Protection*, 148, 105734.

616 Farnworth, B., Innes, J., Davy, M., Little, L., Cave, V., & Waas, J. R. (2020). Antipredator  
617 responses of ship rats to visual stimuli: combining unimodal predation cues generates risk  
618 avoidance. *Animal Behaviour*, *168*, 149–157.

619 Fox, J. and Weisberg, S. (2019). An {R} Companion to Applied Regression, Third Edition.  
620 Thousand Oaks CA: Sage. <https://socialsciences.mcmaster.ca/jfox/Books/Companion>

621 Frings, H. and Frings, M. (1967). Behavioral manipulation (visual, mechanical, and  
622 acoustical).Pages 387-454 in W.W. Kilgor and R.L. Doult (eds), *Pest Control: biological,*  
623 *physical and selected chemical methods.* Academic Press, New York, NY.

624 Frostman, P., & Sherman, P. T. (2004). Behavioral response to familiar and unfamiliar neighbors  
625 in a territorial cichlid, *Neolamprologus pulcher*. *Ichthyological Research*, *51(3)*, 283–  
626 285.

627 Gaynor, K. M., Hojnowski, C. E., Carter, N. H., & Brashares, J. S. (2018). The influence of  
628 human disturbance on wildlife nocturnality. *Science*, *360(6394)*, 1232–1235.

629 Ghazanfar, A. A. & Santos, L. R. 2003 Primates as auditoryspecialists. In *Primate audition.*  
630 *Ethology and Neurobiology* (ed. A. A. Ghazanfar), pp. 1–12. Boca Raton, FL: CRCPress

631 Gunn, WW.H. (1973). Experimental research on the use of sound to disperse Dunlin sandpipers  
632 at Vancouver International Airport. Rep. from LGL Ltd., Edmonton, Alb. for Assoc.  
633 Comm. On Bird Hazards to Aircraft, Nat. Res. Council, Ottawa, Ont. 8 p.

634 Heinsohn, R. (1997). Group territoriality in two populations of African lions. *Animal Behaviour*,  
635 *53(6)*, 1143–1147.

636 Hettena, A. M., Munoz, N., & Blumstein, D. T. (2014). Prey responses to predator’s sounds: A  
637 review and empirical study. *Ethology*, *120(5)*, 427–452.

638 Hill, J. E., DeVault, T. L., Wang, G., & Belant, J. L. (2020). Anthropogenic mortality in  
639 mammals increases with the human footprint. *Frontiers in Ecology and the Environment*,  
640 *18(1)*, 13–18.

641 Hobson, E. A., John, D. J., Mcintosh, T. L., Avery, M. L., & Wright, T. F. (2015). The effect of  
642 social context and social scale on the perception of relationships in monk parakeets.  
643 *Current Zoology*, *61(1)*, 55-69.

644 Hobson, E. A., Smith-Vidaurre, G., & Salinas-Melgoza, A. (2017). History of nonnative Monk  
645 Parakeets in Mexico. *PloS One*, *12(9)*, e0184771.

646 Hoekstra, J. M., Boucher, T. M., Ricketts, T. H., & Roberts, C. (2004). Confronting a biome  
647 crisis: global disparities of habitat loss and protection. *Ecology Letters*, *8(1)*, 23–29.

648 Hofstetter, R. W., Dunn, D. D., McGuire, R., & Potter, K. A. (2014). Using acoustic technology  
649 to reduce bark beetle reproduction. *Pest Management Science*, *70(1)*, 24–27.

650 Huang, K., Li, X., Liu, X., & Seto, K. C. (2019). Projecting global urban land expansion and heat  
651 island intensification through 2050. *Environmental Research Letters*, *14(11)*, 114037.

652 Jones, P. F., Jakes, A. F., Eacker, D. R., Seward, B. C., Hebblewhite, M., & Martin, B. H.  
653 (2018). Evaluating responses by pronghorn to fence modifications across the Northern  
654 Great Plains. *Wildlife Society Bulletin*, *42(2)*, 225–236.

655 Joseph, L. (2014). Perspectives from parrots on biological invasions. In H. H. Prins & I. J.  
656 Gordon (Eds.), *Invasion Biology and Ecological Theory: Insights from a Continent in*  
657 *Transformation* (pp. 58–82). *Cambridge: Cambridge University Press*.

658 Kassambara, A. (2021). rstatix: Pipe-Friendly Framework for Basic Statistical Tests. R package  
659 version 0.7.0. <https://CRAN.R-project.org/package=rstatix>

660 Kelly, J. K., & Ward, M. P. (2017). Do Songbirds Attend to Song Categories When Selecting  
661 Breeding Habitat? A Case Study with a Wood Warbler. *Behaviour*, *154*(11), 1123–1144.

662 Kennedy, C. M., Oakleaf, J. R., Theobald, D. M., Baruch-Mordo, S., & Kiesecker, J. (2019).  
663 Managing the middle: A shift in conservation priorities based on the global human  
664 modification gradient. *Global Change Biology*, *25*(3), 811–826.

665 Kerman, K., Sieving, K. E., St. Mary, C. & Avery, M. L. (2018). Social conformity affects  
666 experimental measurement of boldness in male but not female monk parakeets  
667 (*Myiopsitta monachus*). *Behaviour*, *155*(13-15), 1025–1050.

668 Khan, H. A., Ahmad, S., Javed, M., Ahmad, K., & Ishaque, M. (2011). Comparative  
669 effectiveness of some mechanical repellents for management of rose ringed parakeet  
670 (*Psittacula krameri*) in citrus, guava and mango orchards. *International Journal of*  
671 *Agriculture and Biology*, *13*(3), 396-400.

672 Khorozyan, I., & Waltert, M. (2019). A framework of most effective practices in protecting  
673 human assets from predators. *Human Dimensions of Wildlife*, *24*(4), 380–394.

674 Kosman, E., Burgio, K. R., Presley, S. J., Willig, M. R., & Scheiner, S. M. (2019). Conservation  
675 prioritization based on trait-based metrics illustrated with global parrot distributions.  
676 *Diversity & Distributions*, *25*(7), 1156–1165.

677 Lewis, R. N., Williams, L. J., & Gilman, R. T. (2021). The uses and implications of avian  
678 vocalizations for conservation planning. *Conservation Biology*, *35*(1), 50–63.

679 Linhart, P., Fuchs, R., Poláková, S., & Slabbekoorn, H. (2012). Once bitten twice shy: long-term  
680 behavioural changes caused by trapping experience in willow warblers *Phylloscopus*  
681 *trochilus*. *Journal of Avian Biology*, *43*(2), 186–192.

682 Liu, X., Huang, Y., Xu, X., Li, X., Li, X., Ciais, P., Lin, P., Gong, K., Ziegler, A. D., Chen, A.,  
683 Gong, P., Chen, J., Hu, G., Chen, Y., Wang, S., Wu, Q., Huang, K., Estes, L., & Zeng, Z.  
684 (2020). High-spatiotemporal-resolution mapping of global urban change from 1985 to  
685 2015. *Nature Sustainability*, 3(7), 564–570.

686 Lönnstedt, O. M., McCormick, M. I., Meekan, M. G., Ferrari, M. C. O., & Chivers, D. P. (2012).  
687 Learn and live: predator experience and feeding history determines prey behaviour and  
688 survival. *Proceedings of the Royal Society B: Biological Sciences*, 279(1736), 2091–  
689 2098.

690 Lüdecke, D., Ben-Shachar, M., Patil, I., Waggoner, P. & Makowski, D. (2021). Performance: An  
691 R package for assessment, comparison and testing of statistical models. *Journal of Open*  
692 *Source Software*, 6(60), 3139.

693 MacGregor-Fors, I., Calderón-Parra, R., Meléndez-Herrada, A., López-López, S., & Schondube,  
694 J. E. (2011). Pretty, but dangerous! Records of non-native Monk Parakeets (*Myiopsitta*  
695 *monachus*) in Mexico. *Revista Mexicana de Biodiversidad*, 82(3), 1053–1056.

696 Mahjoub, G., Hinders, M. K., & Swaddle, J. P. (2015). Using a “sonic net” to deter pest bird  
697 species: Excluding European starlings from food sources by disrupting their acoustic  
698 communication. *Wildlife Society Bulletin*, 39(2), 326–333.

699 Maldonado-Chaparro, A. A., & Chaverri, G. (2021). Why do animal groups matter for  
700 conservation and management? *Conservation Science and Practice*, 3(12), e550.

701 Manser, M. B., Seyfarth, R. M., & Cheney, D. L. (2002). Suricate alarm calls signal predator  
702 class and urgency. *Trends in Cognitive Sciences*, 6(2), 55–57.

703 Manzoor, S., Khan, H. A., & Javed, M. (2013). Inhibiting damage of watermelon (*Citrulus*  
704 *lanatus*) against some bird pests in an orchard of Faisalabad, Pakistan. *JAPS, Journal of*  
705 *Animal and Plant Sciences*, 23(2), 464–468.

706 Marler, P. R., & Slabbekoorn, H. (2004). *Nature's Music: The Science of Birdsong*. San Diego,  
707 CA: Elsevier Academic Press.

708 Martin, R. O. (2018). Grey areas: temporal and geographical dynamics of international trade of  
709 Grey and Timneh Parrots (*Psittacus erithacus* and *P. timneh*) under CITES. *Emu-Austral*  
710 *Ornithology*, 118(1), 113–125.

711 Menchetti, M., & Mori, E. (2014). Worldwide impact of alien parrots (Aves Psittaciformes) on  
712 native biodiversity and environment: a review. *Ethology Ecology & Evolution*, 26(2–3),  
713 172–194.

714 Morinha, F., Carrete, M., Tella, J. L., & Blanco, G. (2020). High Prevalence of Novel Beak and  
715 Feather Disease Virus in Sympatric Invasive Parakeets Introduced to Spain From Asia  
716 and South America. *Diversity*, 12(5), 192.

717 Morteza, K. G., Flinks, H., & Helm, B. (2014). Behavioural response of a migratory songbird to  
718 geographic variation in song and morphology. *Frontiers in Zoology*, 11(1), 85.

719 Mott, D. F. (1973). Monk Parakeet damage to crops in Uruguay and its control. *Bird Control*  
720 *Seminars Proceedings*, 102.

721 Ortiz-Catedral, L., Wallace, C. J., Heinsohn, R., Krebs, E. A., Langmore, N. E., Vukelic, D.,  
722 Bucher, E. H., Varsani, A., & Masello, J. F. (2022). A PCR-Based Retrospective Study  
723 for Beak and Feather Disease Virus (BFDV) in Five Wild Populations of Parrots from  
724 Australia, Argentina and New Zealand. *Diversity*, 14(2), 148.

725 Osada, K., Miyazono, S., & Kashiwayanagi, M. (2014). Pyrazine analogs are active components  
726 of wolf urine that induce avoidance and fear-related behaviors in deer. *Frontiers in*  
727 *Behavioral Neuroscience*, 8, 276.

728 Pardo, M. A., Sparks, E. A., Kuray, T. S., Hagemeyer, N. D., Walters, E. L., & Koenig, W. D.  
729 (2018). Wild acorn woodpeckers recognize associations between individuals in other  
730 groups. *Proceedings of the Royal Society B: Biological Sciences* 285(1882), 20181017.

731 Pires, S. F. (2015). The Heterogeneity of Illicit Parrot Markets: An Analysis of Seven Neo-  
732 Tropical Open-Air Markets. *European Journal on Criminal Policy and Research*, 21(1),  
733 151–166.

734 Planqué, B., & Vellinga, W.-P. (2008). Xeno-canto: a 21st-century way to appreciate  
735 Neotropical bird song. *Neotropical Birding*, 3, 17–23.

736 Postigo, J. L., Carrillo-Ortiz, J., Domènech, J., Tomàs, X., Arroyo, L., & Senar, J. C. (2021).  
737 Dietary plasticity in an invasive species and implications for management: the case of the  
738 monk parakeet in a Mediterranean city. *Animal Biodiversity and Conservation*, 44.2,  
739 185–194.

740 Putland, R. L., & Mensinger, A. F. (2019). Acoustic deterrents to manage fish populations.  
741 *Reviews in Fish Biology and Fisheries*, 29(4), 789–807.

742 R Core Team. 2021. R: A language and environment for statistical computing. R Found Stat  
743 Comput. <https://www.r-project.org/>.

744 Reif, J., Jiran, M., Reifová, R., Vokurková, J., Dolata, P. T., Petrusek, A., & Petrusková, T.  
745 (2015). Interspecific territoriality in two songbird species: potential role of song  
746 convergence in male aggressive interactions. *Animal Behaviour*, 104, 131–136.

- 747 Richardson, S., Mill, A. C., Davis, D., Jam, D. & Ward, A. I. (2020). A systematic review of  
748 adaptive wildlife management for the control of invasive, non-native mammals, and other  
749 human–wildlife conflicts. *Mammal Review*, 50(2), 147–156.
- 750 Schell, C. J., Dyson, K., Fuentes, T. L., Des Roches, S., Harris, N. C., Miller, D. S., Woelfle-  
751 Erskine, C. A., & Lambert, M. R. (2020). The ecological and evolutionary consequences  
752 of systemic racism in urban environments. *Science*, 369, eaay4497.
- 753 Searcy, W. A., Nowicki, S., & Hughes, M. (1997). The Response of Male and Female Song  
754 Sparrows to Geographic Variation in Song. *The Condor*, 99(3), 651–657.
- 755 Searcy, W. A., Nowicki, S., Hughes, M., & Peters, S. (2002). Geographic song discrimination in  
756 relation to dispersal distances in song sparrows. *The American Naturalist*, 159(3), 221–  
757 230.
- 758 Senar, J. C., Domènech, J., Arroyo, L., Torre, I., & Gordo, O. (2016). An evaluation of monk  
759 parakeet damage to crops in the metropolitan area of Barcelona. *Animal Biodiversity and  
760 Conservation*, 39(1), 141–145.
- 761 Smith, J. A., Suraci, J. P., Clinchy, M., Crawford, A., Roberts, D., Zanette, L. Y., & Wilmers, C.  
762 C. (2017). Fear of the human ‘super predator’ reduces feeding time in large carnivores.  
763 *Proceedings of the Royal Society B: Biological Sciences*, 284(1857), 20170433.
- 764 Smith-Vidaurre, G., Araya-Salas, M., & Wright, T. F. (2020). Individual signatures outweigh  
765 social group identity in contact calls of a communally nesting parrot. *Behavioral Ecology*,  
766 31(2), 448–458.
- 767 Smith-Vidaurre, G., Perez-Marrufo, V., & Wright, T. F. (2021). Individual vocal signatures show  
768 reduced complexity following invasion. *Animal Behaviour*, 179, 15–39.



769 South, J. M., & Pruett-Jones, S. (2000). Patterns of Flock Size, Diet, and Vigilance of  
770 Naturalized Monk Parakeets in Hyde Park, Chicago. *The Condor*, *102*(4), 848–854.

771 Stafford, T. (2003). Pest risk assessment for the monk parakeet in Oregon. Oregon Department  
772 of Agriculture Salem, Oregon, USA.

773 Szípló, G., Boeckle, M., Wascher, C. A. F., Spreafico, M., & Bugnyar, T. (2015). With whom to  
774 dine? Ravens' responses to food-associated calls depend on individual characteristics of  
775 the caller. *Animal Behaviour*, *99*, 33–42.

776 Treves, A., Wallace, R. B., Naughton-Treves, L., & Morales, A. (2006). Co-Managing Human–  
777 Wildlife Conflicts: A Review. *Human Dimensions of Wildlife*, *11*(6), 383–396.

778 van der Marel, A., Waterman, J. M., & López-Darias, M. (2021). Barbary ground squirrels do  
779 not have a sentinel system but instead synchronize vigilance. *Behavioral Ecology and*  
780 *Sociobiology*, *75*(11), 153.

781 van der Marel, A., O'Connell, C. L., Prasher, S., Carminito, C., Francis, X., & Hobson, E. A.  
782 (2022). A comparison of low-cost behavioral observation software applications for  
783 handheld computers and recommendations for use. *Ethology*, *128*(3), 275–284.

784 van Eeden, L. M., Dickman, C. R., Ritchie, E. G., & Newsome, T. M. (2017). Shifting public  
785 values and what they mean for increasing democracy in wildlife management decisions.  
786 *Biodiversity and Conservation*, *26*(11), 2759–2763.

787 Vellinga, W.-P., & Planqué, R. (2015). The Xeno-canto Collection and its Relation to Sound  
788 Recognition and Classification. *CLEF (Working Notes)*.  
789 [https://www.academia.edu/download/39066702/XC\\_BirdCLEF\\_2015.pdf](https://www.academia.edu/download/39066702/XC_BirdCLEF_2015.pdf)

790 Venables, W. N. & Ripley, B. D. (2002) Modern Applied Statistics with S. Fourth Edition.  
791 Springer, New York. ISBN 0-387-95457-0

792 Vergara-Tabares, D. L., Cordier, J. M., Landi, M. A., Olah, G., & Nori, J. (2020). Global trends  
793 of habitat destruction and consequences for parrot conservation. *Global Change Biology*,  
794 *26(8)*, 4251–4262.

795 Walters, C. J., & Holling, C. S. (1990). Large-scale management experiments and learning by  
796 doing. *Ecology*, *71(6)*, 2060–2068.

797 Wascher, C. A. F., Szipl, G., Boeckle, M., & Wilkinson, A. (2012). You sound familiar: carrion  
798 crows can differentiate between the calls of known and unknown heterospecifics. *Animal*  
799 *Cognition*, *15(5)*, 1015–1019.

800 Werrell, A. K., Klug, P. E., Lipcius, R. N., & Swaddle, J. P. (2021). A Sonic Net reduces damage  
801 to sunflower by blackbirds (Icteridae): Implications for broad-scale agriculture and crop  
802 establishment. *Crop Protection*, *144*, 105579.

803 Wickham, H. *ggplot2: Elegant Graphics for Data Analysis*. Springer-Verlag New York, 2016.

804 Wilkinson, C. E., McInturff, A., Kelly, M., & Brashares, J. S. (2021). Quantifying wildlife  
805 responses to conservation fencing in East Africa. *Biological Conservation*, *256*, 109071.

806 Wilkinson, C. E., McInturff, A., Miller, J. R. B., Yovovich, V., Gaynor, K. M., Calhoun, K.,  
807 Karandikar, H., Martin, J. V., Parker-Shames, P., Shawler, A., Van Scoyoc, A., &  
808 Brashares, J. S. (2020). An ecological framework for contextualizing carnivore-livestock  
809 conflict. *Conservation Biology*, *34(4)*, 854–867.

810 Wilson, M. W., Ridlon, A. D., Gaynor, K. M., Gaines, S. D., Stier, A. C., & Halpern, B. S.  
811 (2020). Ecological impacts of human-induced animal behaviour change. *Ecology Letters*,  
812 *23(10)*, 1522–1536.

- 813 Wright, T. F., & Dorin, M. (2001). Pair duets in the yellow-naped Amazon (psittaciformes:  
814 *Amazona auropalliata*): Responses to playbacks of different dialects. *Ethology*, *107*(2),  
815 111–124.
- 816 Zeileis, A. & Hothorn, T. (2002). Diagnostic Checking in Regression Relationships. *R News*  
817 *2*(3), 7-10. URL: <https://CRAN.R-project.org/doc/Rnews/>
- 818 Zuberbühler, K. (2001). Predator-specific alarm calls in Campbell’s monkeys, *Cercopithecus*  
819 *campbelli*. *Behavioral Ecology and Sociobiology*, *50*(5), 414–422.